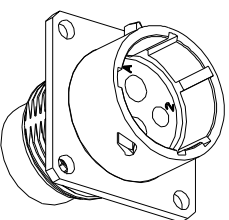
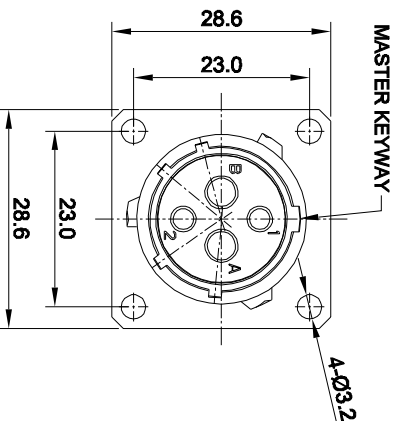
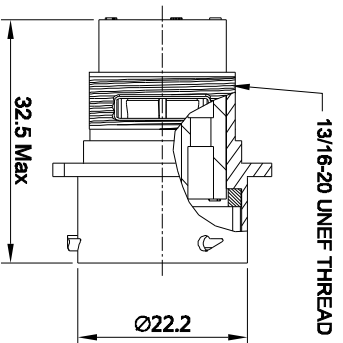
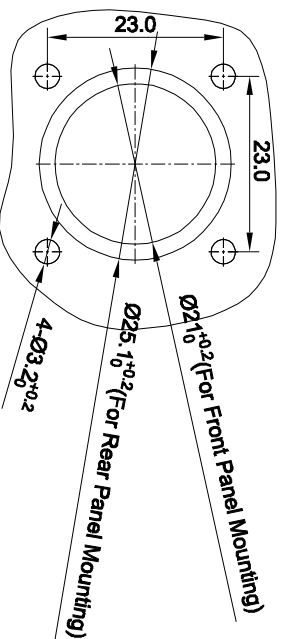


REVISIONS				
REV	ECO	DESCRIPTION	DATE	BY APPR
B1	-	RELEASED DRAWING	AUG-08-2014	BEN TOMMY



NOTES : (UNLESS OTHERWISE SPECIFIED)

- MATERIAL :**
SHELL : ZINC ALLOY / NICKEL PLATED.
INSERT : THERMOPLASTIC , UL94 V-0.
SEAL GASKET : NBR/SILICONE RUBBER.
- SPECIFICATIONS :**
 - RATED CURRENT :**
 - 2.1.1 2.5mm CONTACT : 23A (MAX).
 - 2.1.2 16# CONTACT : 13A (MAX).
 - RATED VOLTAGE :** 350V AC/DC.
 - OPERATING TEMPERATURE :** SEE CHART.
 - DIELECTRIC WITHSTANDING VOLTAGE :** LESS THAN 2 MILLIAMPS CURRENT LEAKAGE@2000 VOLTS AC.
 - INSULATION RESISTANCE :** 5000 MEGOHMS MIN.
 - IP--CLASS :** IP67.
 - MATING CYCLES DURABILITY :** 500 CYCLES MIN.
 - ROHS COMPLIANT.**
- SUITABLE CONTACTS :** 2.5mm & 16# CONTACTS.
- ALL DIMENSIONS ARE FOR REFERENCE USE ONLY.**



PANEL CUT OUT REFERENCE

KEY POS	PART NUMBER	
	-40°C ~ 105°C	-40°C ~ 125°C
N	RT00142PN	RT00142PN03
W	RT00142PW	RT00142PW03
X	RT00142PX	RT00142PX03
Y	RT00142PY	RT00142PY03
Z	RT00142PZ	RT00142PZ03

QUANTITY	SEE PART NUMBER CHART	PART NUMBER	DESCRIPTION	ITER

MATERIALS LIST

UNLESS OTHERWISE SPECIFIED		SIGNATURES		DATE	
1) ALL DIMENSIONS ARE IN MILLIMETERS.	2) TOLERANCES ARE AS SHOWN.	DRAWN:	BEN	DATE:	11/26/14
3) HOLE REFERENCE = Δ		CHECKED:			
		ENGINEER:			
		APPROVAL:			
		CUSTOMER:			

THIS DRAWING IS SUPPLIED FOR SPECIFICATIONS AND PERFORMANCE DATA. THE DRAWING IS NOT TO BE USED FOR REPRODUCTION OR REPRODUCTION IN ANY MANNER. ALL MANUFACTURING VARIATIONS ARE ACCEPTED.		SIZE	TYPE	DWG NO.	REVISION
		B	C-	RT00142P##	B1
		SCALE:	NONE	SHEET	1 OF 1

Amphenol
Sine Systems - www.amphenol-sine.com
44724 Morley Drive
Clinton Township, MI 48038

ECO-MATE RECEPTACLE, SIZE 14,
2POS, P.I.N.