

# 产 品 规 格 书

## SPECIFICATION OF PRODUCT

客户名称 Customer name: \_\_\_\_\_  
产品名称 Product name: \_\_\_\_\_  
产品型号 Product type: \_\_\_\_\_  
客户型号 Customer type: \_\_\_\_\_

拟制 Application: 余佳 2011-7-20  
审核 Auditing: \_\_\_\_\_  
批准 Approved: \_\_\_\_\_

乐山无线电股份有限公司

Leshan Radio Company, Ltd.

中国 四川 乐山 人民西路 287 号

287 West People Road, Leshan, Sichuan, P.R.China

Tel: 0086-833- 2150247 Fax: 0086-833-2150671

Zip Code: 614000 Homepage:www.lrc.cn

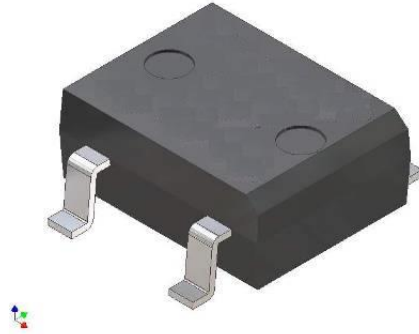
# DB202S Thru DB207S

**High Current Glass Passivated Molding Single-Phase Bridge Rectifier**

**Reverse Voltage 100 to 1000V Forward Current 2.0 A**

## FEATURES

- Plastic Package has Underwriters Laboratory Flammability Classification 94V-0
- High current capacity with small package
- Glass passivated chip junctions
- Superior thermal conductivity
- High IFSM



## 1. Maximum & Thermal Characteristics Ratings at 25°C ambient temperature unless otherwise specified.

Parameter Symbol	Symbol	DB202S	DB203S	DB204S	DB205S	DB206S	DB207S	Unit
Maximum repetitive voltage	VRRM	100	200	400	600	800	1000	V
Maximum RMS Voltage	VRMS	70	140	280	420	560	700	V
Maximum DC Blocking Voltage	VDC	100	200	400	600	800	1000	V
Maximum DC reverse current TA=25 °C	IR	5						μA
at rated DC blocking voltage TA=125°C		500						
Average rectified forward current 60Hz Sine wave Resistance load with Ta=55°C	Io	2						A
Peak forward surge current 8.3ms single half sine-wave superimposed on rated load	IFSM	75						A
Max instantaneous forward voltage at 2.0A	VF	1.1						V
Maximum thermal on P.C.B. without heat-sink	RθJA	40						°C/W
Operating junction temperature	TJ	-55~150						°C
Storage temperature	Tstg	-55~150						°C

# DB202S Thru DB207S

## 2. Ratings and Characteristic Curves (TA = 25°C unless otherwise noted)

Fig. 1 Derating Curve

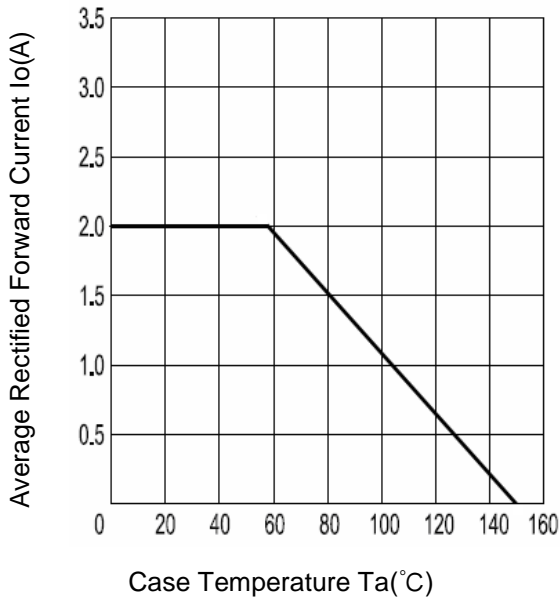


Fig.2 Typical Reverse Characteristics

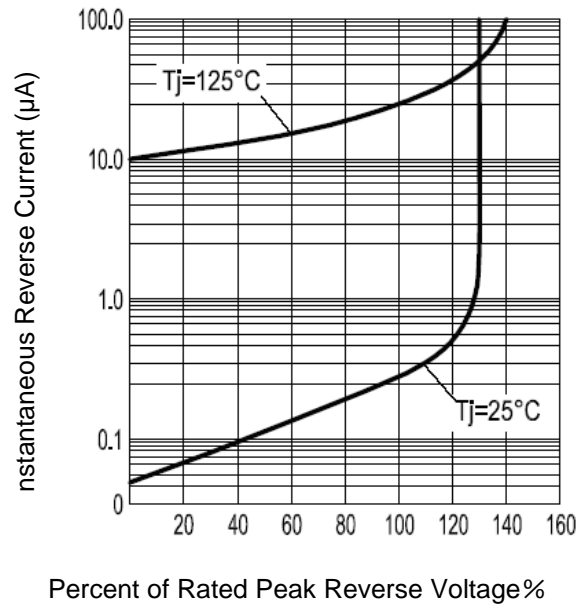


Fig.3 Forward Voltage

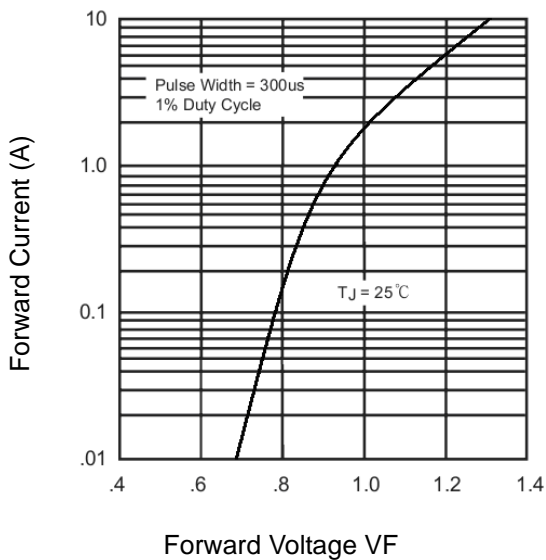
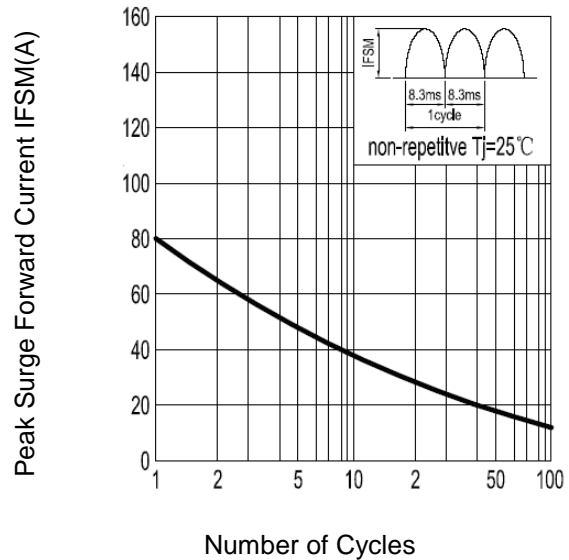
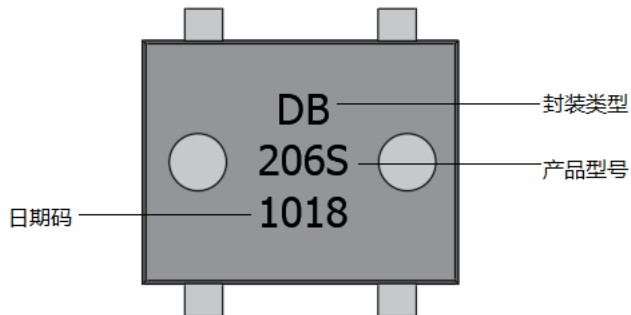


Fig.4 Peak Surge Forward Capability



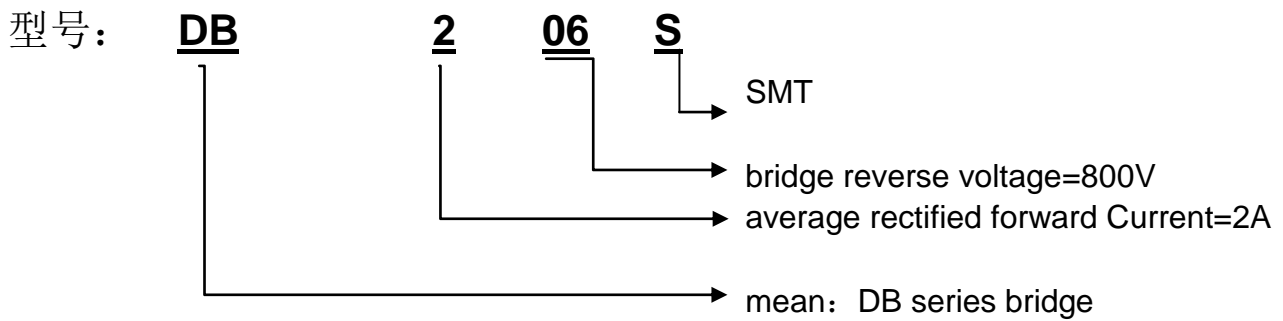
# DB202S Thru DB207S

## 3. Marking Identification

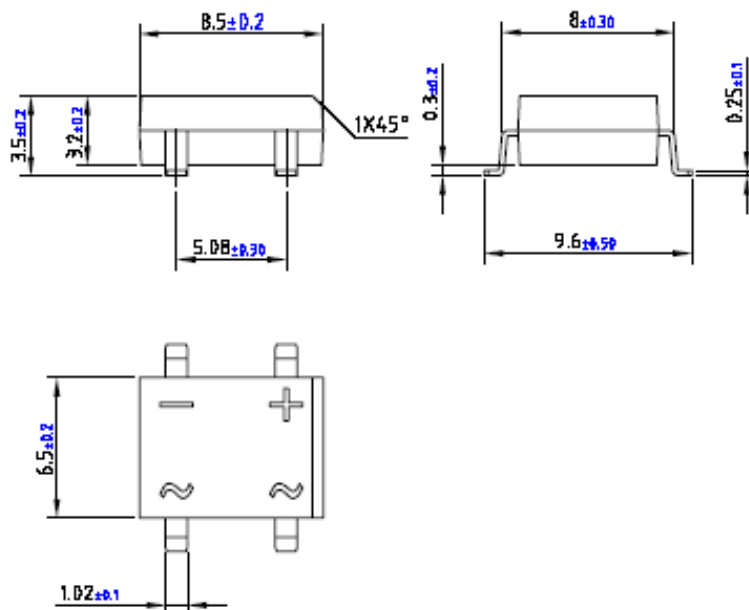


### Note:

生产日期码包含4位数字，例如“1018”，前两个数字“10”表示为2010年，另外二个数字“18”是指第18周，即表示该产品为2010年18周生产。



## 4. Dimension



# DB202S Thru DB207S

## 5. Update Record

版次	更新记录	更新作者	更新日期
1	第一版	余佳	2011-7-20