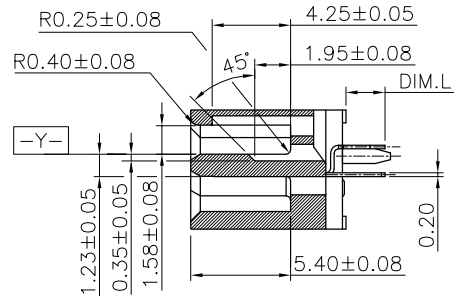
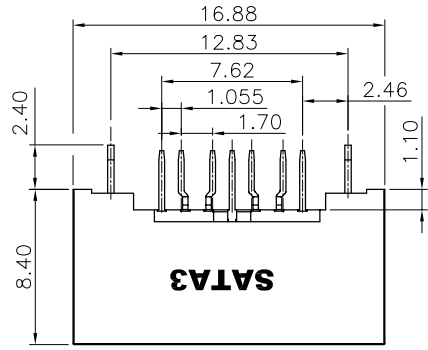


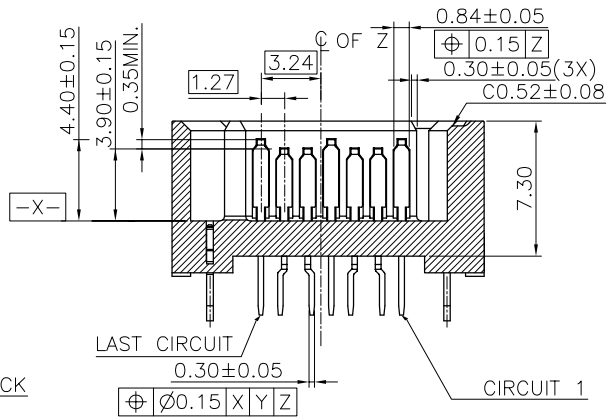
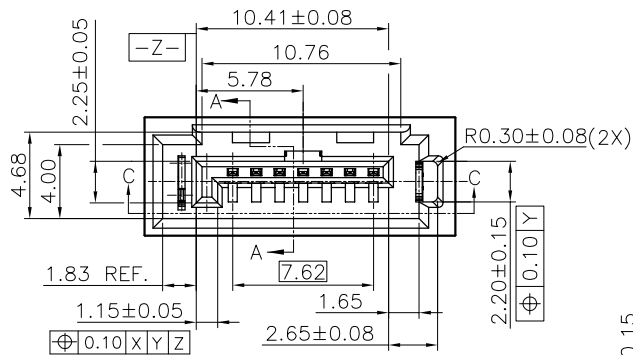
REV.	ECN. No.	APPD.
A	BC100059083	Yihsin Chen

NOTES:

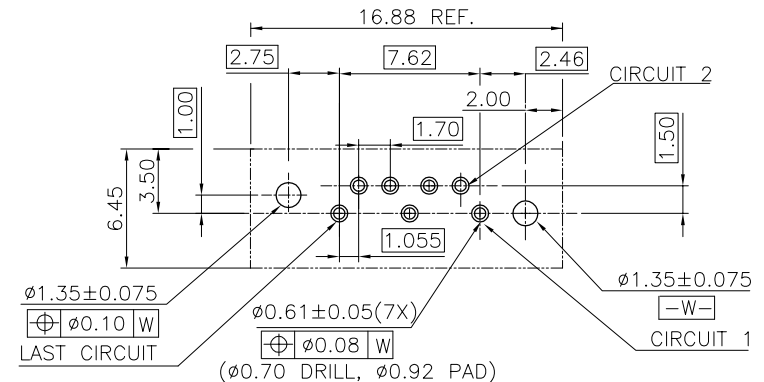
- DIMENSIONS SHALL BE INTERPRETED PER ASME Y14.5-2009
- ALL DIMENSIONS ARE MILLIMETERS.
- SPECIFICATIONS OF PRODUCT ARE SHOWN ON DRAWING "303-0300-2659".
- MATERIALS OF PARTS ARE SHOWN ON DRAWING "303-0500-2659".
- DATE CODE: "****" REFER TO FOXCONN'S DOC "SQ-3B0-070"
- PRODUCT NO. MATRIX : PLEASE REFER TO DRAWING "303-0500-2659".
- HARMFUL MATERIAL CONTROL PLEASE FOLLOW FOXCONN'S "EPI12".
- PLEASE CONTACT FOXCONN SALES REPRESENTATIVE TO VERIFY PRODUCT DETAILS & AVAILABILITY.



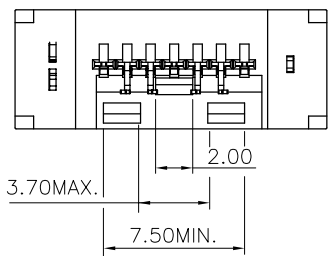
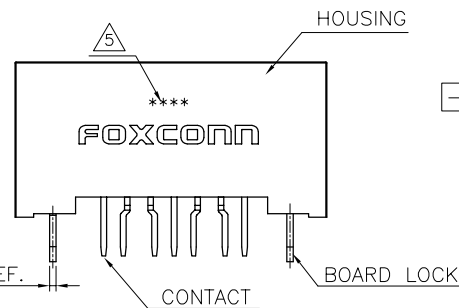
SECTION A-A



SECTION C-C

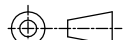


RECOMMENDED P.C.B. LAYOUT



TAIL LENGTH DIM.L

- S = 2.45 mm
- A = 3.30 mm
- B = 2.85 mm
- C = 3.25 mm
- D = 2.10 mm
- E = 2.70 mm
- F = 3.10 mm
- G = 1.85 mm
- J = 3.50 mm
- K = 2.30 mm

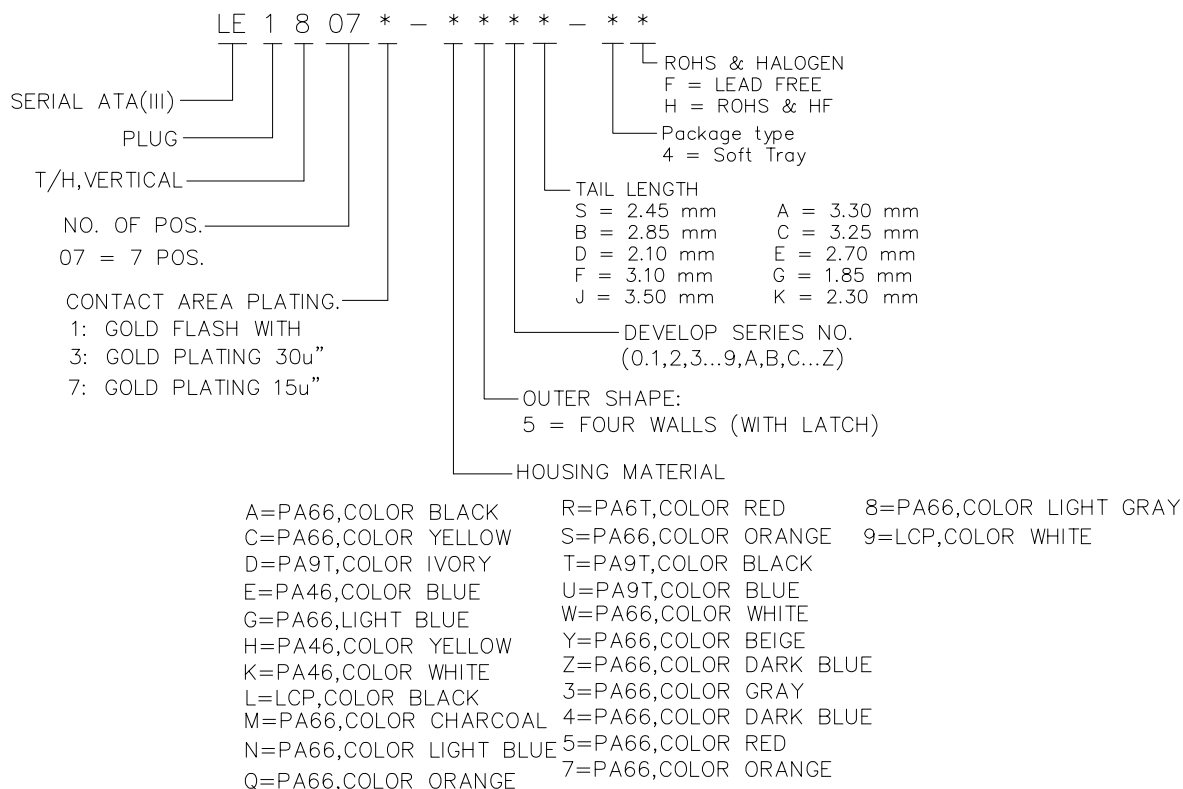
X.±	X'± 1°	UNITS	mm	NAME(INTENDED USE)	FOXCONN HON HAI PRECISION IND. CO.,LTD. TAIPEI, TAIWAN, R.O.C. TITLE: CUSTOMER DRAWING, 7 POS. VERTICAL T/H, SHROUDED PLUG DWG NO.: 303-0000-2659
.X± 0.25	.X'±	MAT'L		ISATA3	
.XX± 0.20	.XX'±			PART NO.(INTENDED USE) LE18 SERIAL	
.XXX± 0.15	.XXX'±	FINISH		APPD: Yihsin Chen	
THESE DRAWINGS AND SPECIFICATIONS ARE THE PROPERTY OF HON HAI PRECISION IND. CO., LTD. AND SHALL NOT BE REPRODUCED, COPIED OR USED IN ANY MANNER WITHOUT THE PRIOR WRITTEN CONSENT OF HON HAI PRECISION IND. CO., LTD.			Q'TY	CHKD: Wolfe Liu DR: Ben.Luo 6/01'10	
					SCALE SHEET REV. N/A 1/1 A

P/N | LE1807*-****-**



ITEM	DESC.	Q'TY	MATERIAL	TREATMENT	REMARK
1	HOUSING	1	THERMOPLASTIC UL 94V-0		
2	CONTACT	SEE NOTE BELOW	COPPER ALLOY	A) NICKEL UNDER PLATING OVER ALL THICKNESS : 50 u" MIN. . B) MATTE TIN PLATING OVER NICKEL THICKNESS : 100 u" MIN. . ON SOLDER AREA. C) GOLD PLATING OVER NICKEL ON CONTACT AREA(SEE NOTES BELOW).	
3	BOARD LOCK	2	MEDIUM CARBON STEEL	A) NICKEL PLATING OVER ALL THICKNESS : 50 u" MIN. . B) MATTE TIN PLATING OVER NICKEL. THICKNESS : 100 u" MIN. .	

NOTE : 1.HARMFUL MATERIAL CONTROL PLEASE FOLLOW FOXCONN'S DOC. "EPI12".
2.PLEASE CONTACT FOXCONN SALES REPRESENTATIVE TO VERIFY PRODUCT
DETAOLS & AVAILABILITY.
3.PRODUCT NO. MATRIX:



4. THE CONCENTRATIONS OF BR&CL CAN SATISY THE REQUIREMENTS
OF HALOGEN FREE IN DOCUMENT "EPI12".

FOXCONN HON HAI PRECISION IND. CO.,LTD.
TAIPEI, TAIWAN, R.O.C.

APPD. : Yihsin Chen	TITLE : MATERIAL SHEET T/H, VERTICAL,7 POS., PLUG
CHKD. : Wolfe Liu	PROD. SERIES: LE1807*-****-**
DR. : Ben.Luo 6/01'10	DWG. NO : 303-0500-2659
	REV. : A SHEET : 1/1

A	BC100060390	Yihsin Chen
REV.	ECN NO.	APPD.

SPECIFICATIONS :

1. MATERIAL AND FINISH :

1-1. HOUSING :

THERMOPLASTIC , UL94V-0

1-2. CONTACT :

COPPER ALLOY, NICKEL UNDER PLATING OVER ALL, THICKNESS 50u" MIN. ,
MATTE TIN PLATING OVER NICKEL, THICKNESS 100u"MIN. ON SOLDER AREA,
GOLD PLATING OVER NICKEL ON CONTACT AREA,

1-3. BOARD LOCK :

MEDIUM CARBON STEEL, NICKEL UNDER PLATING OVER ALL, THICKNESS 50u" MIN. ,
MATTE TIN PLATING OVER ALL, THICKNESS 100u"MIN. .

1-4. HARMFUL MATERIAL CONTROL PLEASE FOLLOW DOC. EPI12.

2. PERFORMANCE :

2-1. CURRENT RATING : 1.5 Amps MAX. PER PIN.

2-2. OPERATING TEMPERATURE : -55°C TO +85°C.

3. ELECTRICAL :

3-1. LOW LEVEL CONTACT RESISTANCE(DRY CIRCUIT) : 30 MILLIOHMS MAX. INITIAL.

3-2. DIELECTRIC WITHSTANDING VOLTAGE : 500 VAC. AT SEA LEVEL.

3-3. INSULATION RESISTANCE : 1000 MEGAOHMS MIN. INITIAL.

4. MECHANICAL :

4-1. INSERTION FORCE: EIA-364-13, 45N MAX. .

4-2. REMOVAL FORCE: EIA-364-13, 10N MIN. .

4-3. DURABILITY: 50 CYCLES

5. ENVIRONMENTAL :

5-1. PHYSICAL SHOCK: PASS EIA-364-27, CONDITION H.

5-2. VIBRATION: PASS EIA-364-28, CONDITION V TEST LETTER A.

5-3. HUMIDITY: PASS EIA-364-31, METHOD II TEST CONDITION A.

6. PLEASE CONTACT FOXCONN SALES REPRESENTATIVE TO VERIFY PRODUCT DETAILS & AVAILABILITY.

7. THE CONCENTRATIONS OF BR&CL CAN SATISY THE REQUIREMENTS OF HALOGEN FREE IN DOCUMENT "EPI12".

FOXCONN HON HAI PRECISION IND. CO.,LTD.
TAIPEI, TAIWAN, R.O.C.

APPD. :
Yihsin Chen

TITLE : SPECIFICATION, 7 POS.
VERTICAL T/H, HOST PLUG, SATA

CHKD. :
Wolfe Liu

PROD. SERIES : LE1807*-****-**

DR. :
Ben.Luo 6/01'10

DWG. No : 303-0300-2659

REV. : A SHEET : 1/1

A	BC100060375	Yihsin Chen
REV.	ECN No.	APPD.