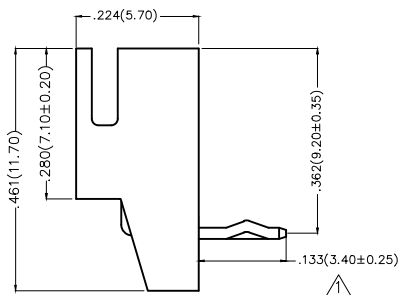
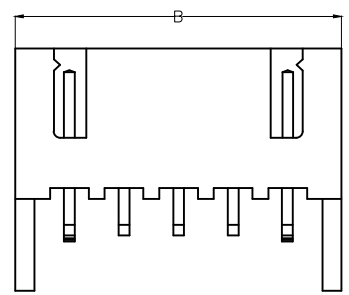
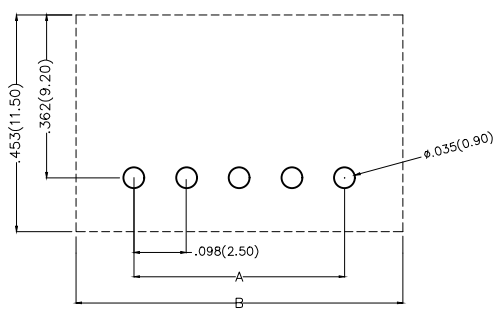
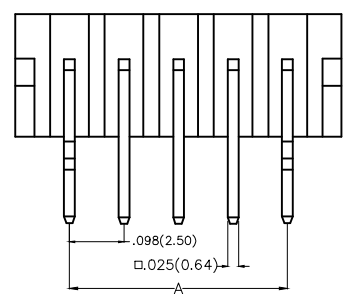


| REV | LOCATIONS | DESCRIPTION | DATE      | REVISER | APPD   |
|-----|-----------|-------------|-----------|---------|--------|
| 1   | △         | Add DIM     | 23/Oct/15 | KEVIN   | CHERRY |



**Electrical**  
 Current Rating: 3.0A AC(rms)/DC  
 Voltage Rating: 250V AC(rms)/DC  
 Contact Resistance: 20 mΩ Max  
 Insulation Resistance: 1000 MΩ MIN  
 Withstanding Voltage: 1000V AC r.m.s  
 Temperature Range—Operating: -25°C~+85°C

**Material and Plating**  
 Housing: PA66( UL 94V-2)  
 Contact Pin: Brass  
 Plating: Tin Plated



Recommended P.C.Board Layout

Ordering Information

FWF 250 02 — S XX B 2 2 W1 B  
 1 2 3 4 5 6 7 8 9 10



|                           |                                     |                           |                              |                  |                              |
|---------------------------|-------------------------------------|---------------------------|------------------------------|------------------|------------------------------|
| 1 Category<br>FWF—Wafer   | 2 Series Number<br>250—Pitch 2.50mm | 3 Distinction No.<br>02   | 4 Row Option<br>S—Single Row | 5 Circuits<br>XX | 6 Entry Angle<br>B—90° Angle |
| 7 Plating<br>2—Tin Plated | 8 Material—Resin<br>2—PA66          | 9 Color—Resin<br>W1—White | 10 Packaging<br>B—PE Bag     |                  |                              |

|                            |                                       |                 |                     |                     |                                |  |                        |       |
|----------------------------|---------------------------------------|-----------------|---------------------|---------------------|--------------------------------|--|------------------------|-------|
| <br>THIRD ANGLE PROJECTION | GENERAL TOLERANCES (UNLESS SPECIFIED) |                 | APPROVE BY<br>FRANK | DATE<br>01/JUL/13   | PART NO.<br>FWF25002—SXXB22W1B | ITEM NO.<br>FWF25002   | <br>Leader Of Industry |       |
|                            | DESIGN UNITS<br>Inch (metric)         | X.X±.012(0.30)  | X.±5'               | CHECKED BY<br>JACOB | DATE<br>01/JUL/13              | TITLE<br>Wire to Board (Wafer)<br>Pitch 2.5mm 90° Angl (DIP)   |                        | REV 1 |
| SCALE<br>5:1               | SIZE<br>A4                            | X.XX±.006(0.15) | .XX±1'              | DRAWN BY<br>CHERRY  | DATE<br>01/JUL/13              | THIS DRAWING CONTAINS INFORMATION THAT IS PROPRIETARY TO TXGA INDUSTRIAL ELECTRONICS(S.Z)CO.,LTD AND SHOULD NOT BE USED WITHOUT WRITTEN PERMISSION |                        |       |

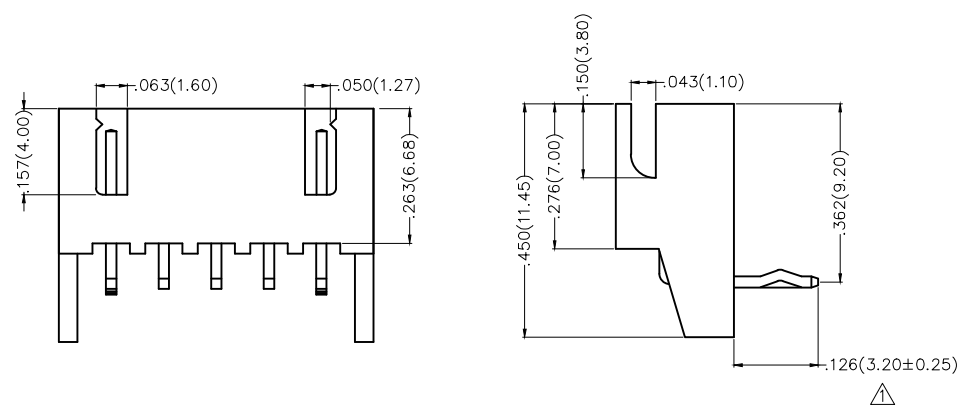
| REV | LOCATIONS | DESCRIPTION | DATE | REVISER | APPD |
|-----|-----------|-------------|------|---------|------|
|     |           |             |      |         |      |

Material and Plating : Housing PA66 UL94V-2 , Tin Plated.

| Circuits<br>(n) | Part No.           | Dimensions(in/mm) |              |
|-----------------|--------------------|-------------------|--------------|
|                 |                    | A                 | B            |
| 2               | FWF25002-S02B22W1B | .098(2.50)        | .295(7.50)   |
| 3               | FWF25002-S03B22W1B | .197(5.00)        | .394(10.00)  |
| 4               | FWF25002-S04B22W1B | .295(7.50)        | .492(12.50)  |
| 5               | FWF25002-S05B22W1B | .394(10.00)       | .591(15.00)  |
| 6               | FWF25002-S06B22W1B | .492(12.50)       | .689(17.50)  |
| 7               | FWF25002-S07B22W1B | .591(15.00)       | .787(20.00)  |
| 8               | FWF25002-S08B22W1B | .689(17.50)       | .886(22.50)  |
| 9               | FWF25002-S09B22W1B | .787(20.00)       | .984(25.00)  |
| 10              | FWF25002-S10B22W1B | .886(22.50)       | 1.083(27.50) |
| 11              | FWF25002-S11B22W1B | .984(25.00)       | 1.181(30.00) |
| 12              | FWF25002-S12B22W1B | 1.083(27.50)      | 1.024(32.50) |
| 13              | FWF25002-S13B22W1B | 1.181(30.00)      | 1.378(35.00) |

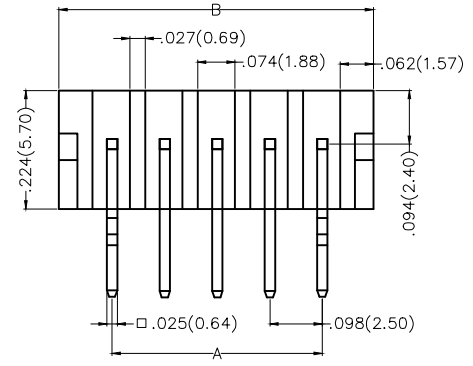
|   |  |                  |            |           |  |          |   |
|---|--|------------------|------------|-----------|--|----------|---|
| <br>THIRD ANGLE<br>PROJECTION | GENERAL TOLERANCES<br>(UNLESS SPECIFIED) |                  | APPROVE BY | DATE      | PART NO.   | ITEM NO. | <br>Leader Of Industry |
|   | X.±.012(0.30)                            | X.±5'            | FRANK      | 01/JUL/13 | FWF25002-SXXB22W1B   | FWF25002 |   |
| DESIGN UNITS<br>Inch (metric)   | X.X±.008(0.20)                           | .X'±2'           | CHECKED BY | DATE      | TITLE  |          | REV 1    SHEET NO. 2/2  |
|   | X.XX±.006(0.15)                          | .XX'±1'          | JACOB      | 01/JUL/13 | Wire to Board (Wafer)<br>Pitch 2.5mm 90° Angiel (DIP)  |          |   |
| SCALE   | SIZE                                     | X.XXX±.004(0.10) | DRAWN BY   | DATE      | THIS DRAWING CONTAINS INFORMATION THAT IS PROPRIETARY TO TXGA INDUSTRIAL ELECTRONICS(S.Z)CO.,LTD AND SHOULD NOT BE USED WITHOUT WRITTEN PERMISSION |          |   |
| 5:1   | A4                                       | .XXX'±0.5'       | CHERRY     | 01/JUL/13 |  |          |   |

| REV | LOCATIONS | DESCRIPTION | DATE      | REVISER | APPD   |
|-----|-----------|-------------|-----------|---------|--------|
| 1   | △         | Add DIM     | 23/Oct/15 | KEVIN   | CHERRY |



**Electrical**  
 Current Rating: 3.0A AC(rms)/DC  
 Voltage Rating: 250V AC(rms)/DC  
 Contact Resistance: 20 mΩ Max  
 Insulation Resistance: 1000 MΩ MIN  
 Withstanding Voltage: 1000V AC r.m.s  
 Temperature Range—Operating: -25°C~+85°C

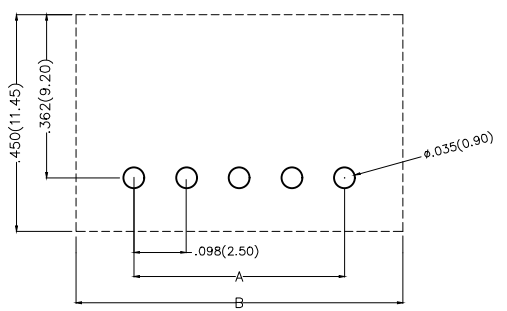
**Material and Plating**  
 Housing: PA6T( UL 94V-0)  
 Contact Pin: Brass  
 Plating: Tin Plated



**Ordering Information**

FWF 250 02 — S XX B 2 4 W5 B  
 1 2 3 4 5 6 7 8 9 10

|   |                         |   |                                   |   |                         |    |                            |   |                |   |                            |
|---|-------------------------|---|-----------------------------------|---|-------------------------|----|----------------------------|---|----------------|---|----------------------------|
| 1 | Category<br>FWF—Wafer   | 2 | Series Number<br>250—Pitch 2.50mm | 3 | Distinction No.<br>02   | 4  | Row Option<br>S—Single Row | 5 | Circuits<br>XX | 6 | Entry Angle<br>B—90° Angle |
| 7 | Plating<br>2—Tin Plated | 8 | Material—Resin<br>4—PA6T          | 9 | Color—Resin<br>W5—White | 10 | Packaging<br>B—PE Bag      |   |                |   |                            |





Recommended P.C.Board Layout

|                               |                                       |                  |                     |                   |  |                      |                        |       |
|-------------------------------|---------------------------------------|------------------|---------------------|-------------------|--|----------------------|------------------------|-------|
| <br>THIRD ANGLE PROJECTION    | GENERAL TOLERANCES (UNLESS SPECIFIED) |                  | APPROVE BY<br>FRANK | DATE<br>01/JUL/13 | PART NO.<br>FWF25002—SXXB24W5B   | ITEM NO.<br>FWF25002 | <br>Leader Of Industry |       |
|                               | X.±.012(0.30)                         | X.±5'            | CHECKED BY<br>JACOB | DATE<br>01/JUL/13 | TITLE<br>Wire to Board (Wafer)<br>Pitch 2.5mm 90° Angled (DIP)   |                      |                        | REV 1 |
| DESIGN UNITS<br>Inch (metric) | X.XX±.008(0.20)                       | .X'±2'           | DRAWN BY<br>CHERRY  | DATE<br>01/JUL/13 | THIS DRAWING CONTAINS INFORMATION THAT IS PROPRIETARY TO TXGA INDUSTRIAL ELECTRONICS(S.Z)CO.,LTD AND SHOULD NOT BE USED WITHOUT WRITTEN PERMISSION |                      |                        |       |
| SCALE<br>5:1                  | SIZE<br>A4                            | X.XXX±.004(0.10) |                     |                   |  |                      |                        |       |

| REV | LOCATIONS | DESCRIPTION | DATE | REVISER | APPD |
|-----|-----------|-------------|------|---------|------|
|     |           |             |      |         |      |

Material and Plating : Housing PA6T UL94V-0 , Tin Plated.

| Circuits<br>(n) | Part No.           | Dimensions(in/mm) |              |
|-----------------|--------------------|-------------------|--------------|
|                 |                    | A                 | B            |
| 2               | FWF25002-S02B24W5B | .098(2.50)        | .295(7.50)   |
| 3               | FWF25002-S03B24W5B | .197(5.00)        | .394(10.00)  |
| 4               | FWF25002-S04B24W5B | .295(7.50)        | .492(12.50)  |
| 5               | FWF25002-S05B24W5B | .394(10.00)       | .591(15.00)  |
| 6               | FWF25002-S06B24W5B | .492(12.50)       | .689(17.50)  |
| 7               | FWF25002-S07B24W5B | .591(15.00)       | .787(20.00)  |
| 8               | FWF25002-S08B24W5B | .689(17.50)       | .886(22.50)  |
| 9               | FWF25002-S09B24W5B | .787(20.00)       | .984(25.00)  |
| 10              | FWF25002-S10B24W5B | .886(22.50)       | 1.083(27.50) |
| 11              | FWF25002-S11B24W5B | .984(25.00)       | 1.181(30.00) |
| 12              | FWF25002-S12B24W5B | 1.083(27.50)      | 1.024(32.50) |
| 13              | FWF25002-S13B24W5B | 1.181(30.00)      | 1.378(35.00) |
| 14              | FWF25002-S14B24W5B | 1.024(32.50)      | 1.476(37.50) |
| 15              | FWF25002-S15B24W5B | 1.378(35.00)      | 1.575(40.00) |
| 16              | FWF25002-S16B24W5B | 1.476(37.50)      | 1.673(42.50) |

|   |  |                  |            |           |  |          |   |
|---|--|------------------|------------|-----------|--|----------|---|
| <br>THIRD ANGLE<br>PROJECTION | GENERAL TOLERANCES<br>(UNLESS SPECIFIED) |                  | APPROVE BY | DATE      | PART NO.   | ITEM NO. | <br>Leader Of Industry |
|   | X.±.012(0.30)                            | X.±5'            | FRANK      | 01/JUL/13 | FWF25002-SXXB24W5B   | FWF25002 |   |
| DESIGN UNITS<br>Inch (metric)   | X.X±.008(0.20)                           | .X±2'            | CHECKED BY | DATE      | TITLE  |          | REV 1    SHEET NO. 2/2  |
|   | X.XX±.006(0.15)                          | .XX±1'           | JACOB      | 01/JUL/13 | Wire to Board (Wafer)<br>Pitch 2.5mm 90° Angl (DIP)  |          |   |
| SCALE   | SIZE                                     | X.XXX±.004(0.10) | DRAWN BY   | DATE      | THIS DRAWING CONTAINS INFORMATION THAT IS PROPRIETARY TO TXGA INDUSTRIAL ELECTRONICS(S.Z)CO.,LTD AND SHOULD NOT BE USED WITHOUT WRITTEN PERMISSION |          |   |
| 5:1   | A4                                       | .XXX±0.5'        | CHERRY     | 01/JUL/13 |  |          |   |