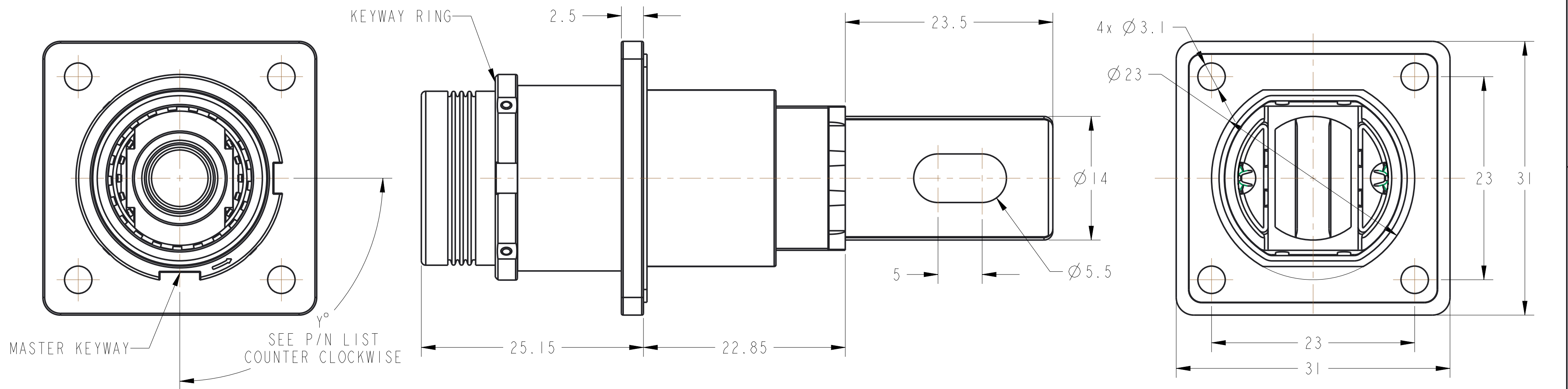


REV. A	SHEET 1 OF 1	DOCUMENT NO. C10-738726-( )
REVISIONS		
REV	DESCRIPTION	DATE
A	PREMININARY REVISION	2016-07-06

GENERAL TOLERANCE

DIM. RANGE	0.5 ~ 3	> 3 ~ 6	> 6 ~ 30	> 30 ~ 120	> 120 ~ 400
TOLERANCE	±0.1	±0.1	±0.2	±0.3	±0.5

CUSTOMER DRAWING



MFG PART NUMBER: C10-738726-( ) ( ) ( ) ( )

BASE NUMBER

COLOR OF FINGER PROOF HEAD, SEE TABLE

PIN TYPE, SEE TABLE

SEALING, SEE TABLE

KEYWAY, SEE TABLE

ITEM	DESCRIPTION	CODE NUMBER	MFG NUMBER
COLOR OF FINGER PROOF HEAD	ORANGE	1	O
	BLACK	2	B
	RED	3	R
PIN TYPE	BUSBAR	1	B
	SEALING	IP 67	0
SEALING	NO SEALING	1	N
	KEYWAY (Y°)	90°	0
KEYWAY (Y°)	270°	1	1
	60°	2	2
	120°	3	3
	150°	4	4

CODE NUMBER REFERENCE: SLPIRB( )P( ) ( ) ( ) E H

BASE NUMBER

PIN TYPE, SEE TABLE

SEALING, SEE TABLE

COLOR OF FINGER PROOF HEAD, SEE TABLE

KEYWAY, SEE TABLE

EMI

HVIL



1. THE REFERENCED PRODUCT IS IN COMPLIANCE WITH THE MAXIMUM CONCENTRATION VALUES(MCVS) AS SET BY ROHS 2.0 DIRECTIVE 2011/65/EU AND ANNEX II AMENDMENT DIRECTIVE (EU)2015/863.

NOTES:

THIS DOCUMENT CONTAINS PROPRIETARY INFORMATION AND SUCH INFORMATION MAY NOT BE DISCLOSED TO OTHERS FOR ANY PURPOSE OR USED FOR MANUFACTURING PURPOSES WITHOUT WRITTEN PERMISSION FROM THE AMPHENOL CORP.

N/A	PRO/ENGINEER INFORMATION
NEXT ASSEMBLY	Pro/e Model Used:
METRIC DOCUMENT	10-738726.RECEPTACLE.ASSEM
	Drawing Name:
	C10-738726.ABROAD

UNLESS OTHERWISE SPECIFIED		SPECIFICATIONS		POS	QTY	PART NUMBER	DESCRIPTION	NOTE	
LINEAR DIMENSIONS ARE IN: MILLIMETERS		MATERIAL SPEC. N/A		APPROVALS		PARTS LIST			
TOLERANCES: ANGLES= ±2° DEFAULT LINEAR TOLERANCES SEE TABLE		PROCESS SPEC. N/A		PREPARED BY	DATE	AMPHENOL INDUSTRIAL OPERATIONS			
DIM. & TOL. PER ASME Y14.5M-1994; DRW PER MIL-DTL-31000; OTHER AMPHENOL STANDARDS: 9-9318		LEGENDS: △=FLAG NOTE CALL OUT REFERENCE ONLY		ENGINEER IN CHARGE	JUL-06-17	Amphenol Technology(Zhuhai)Co.,Ltd			
				DESIGN MANAGER	ROB WENG	No.63, Xinghan Road, Sanzao Town, Jinwan, Zhuhai, PRC			
				DESIGN ACTIVITY GROUP	C&I	8.0MM SURLOK PLUS WITH EMI, RECEPTACLE			
				THIRD ANGLE PROJECTION		SIZE	CAGE CODE	DOCUMENT NO.	REV.
						C	77820	C10-738726-( )	A
				SCALE: 3.0		REF: N/A		SHEET 1 OF 1	

DOCUMENT NO. C10-738726-( ) SHEET 1 OF 1 REV. A

DOCUMENT NO. C10-738726-( ) SHEET 1 OF 1 REV. A