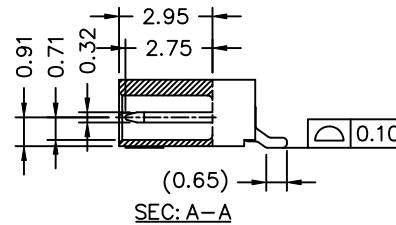
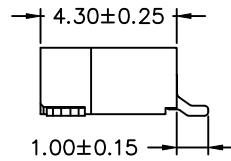
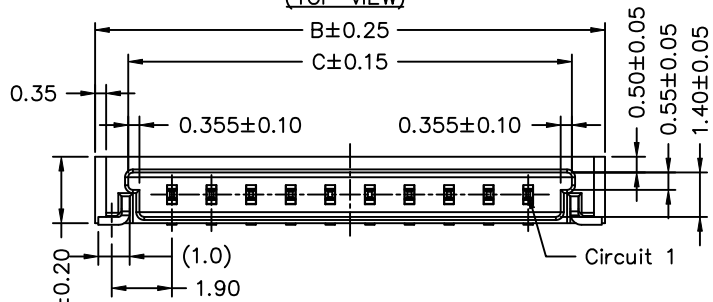
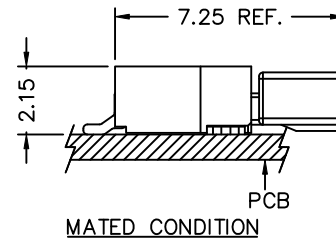
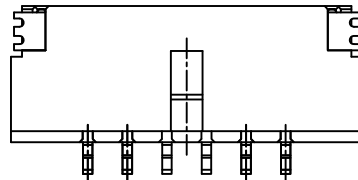
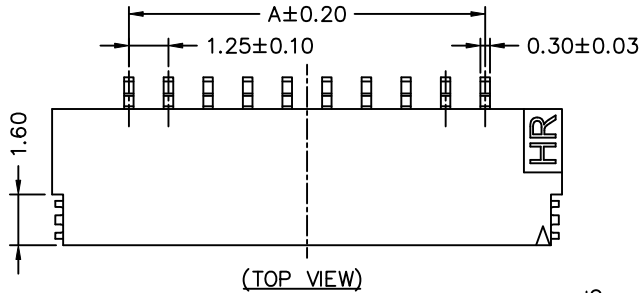


P/N LEGEND

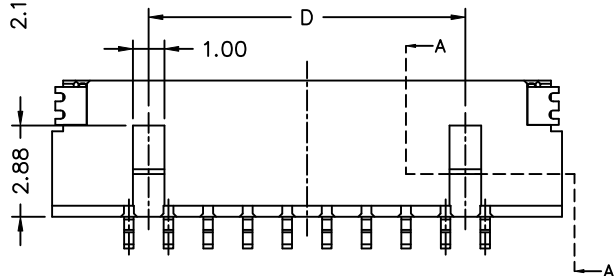
A1255 WR-S-XP XXX				
①	②	③	④	⑤
① Series No.				
② Connector type: WR=Right angle				
③ Mounting type: S=SMT without boss				
④ No. of circuits				
⑤ Option code:				
D02=Nylon6T,UL94V-0, Color: Natural(Beige)				
D12=Nylon6T,UL94V-0, Color: Natural(Black)				

SPECIFICATIONS

Current Rating: 1A AC,DC
 Voltage Rating: 200V AC,DC
 Temperature Range: -25°C ~ +85°C
 Contact Resistance: 40mΩ Max.
 Insulation Resistance: 100MΩ Min.
 Withstanding Voltage: 500V AC/minute
 Pin Material: Phosphor Bronze/
 Gold-plated 3u"
 Solder Tabs: Phosphor Bronze/
 Gold-flash



Circuit No.	Dimensions			
	A	B	C	D
02P	1.25	6.10	4.01	----
03P	2.50	7.35	5.26	----
04P	3.75	8.60	6.51	----
05P	5.00	9.85	7.76	----
06P	6.25	11.10	9.01	----
07P	7.50	12.35	10.26	7.50
08P	8.75	13.60	11.51	8.75
10P	11.25	16.10	14.01	10.00
11P	12.50	17.35	15.26	11.25
12P	13.75	18.60	16.51	12.50
13P	15.00	19.85	17.76	13.75
14P	16.25	21.10	19.01	15.00
15P	17.50	22.35	20.26	16.25
20P	23.75	28.60	26.51	22.50
25P	30.00	34.85	32.76	28.75
30P	36.25	41.10	39.01	35.00



						燦達電子工業股份有限公司 JOINT TECH ELECTRONIC IND. CO., LTD.	
		UNIT	SCALE	SHEET	TITLE:		
		mm	1 : 1	1 of 2	1.25mm PITCH 90° WAFER-SMT TYPE, ULTRA LOW PROFILE		
		DRAWN BY	APPROVED BY				
		歐陽小強	董正一				
		2006.11.30	2006.11.30		DRAW NO. : A1255WR-S-XP		
GENERAL TOLERANCE				ANGLE±			
A5	EN1511090005	2015.11.10	劉建芳	X.X±0.25			
A4	EN1208130264	2012.09.20	陳錦展	X.XX±0.15			
REV.	DESCRIPTION	DATE	NAME	X.XXX±0.05	REV. A5		