

RB520S30
Schottky Barrier Diode
[Http://www.sh-willsemi.com](http://www.sh-willsemi.com)
Features

- Small surface mounting type
- High reliability
- Low leakage current
- These are Pb-Free Devices


SOD-523

Circuit
Applications

- Low Current rectification


Marking
Absolute maximum ratings

Parameter	Symbol	Value	Unit
Reverse voltage (DC)	V_R	30	V
Average rectified forward current	I_O	200	mA
Peak forward surge current	I_{FSM}	1	A
Junction temperature	T_J	125	°C
Storage temperature	Tstg	-40 ~ 125	°C

Electronics characteristics ($T_A=25^\circ\text{C}$)

Parameter	Symbol	Condition	Min.	Typ.	Max.	Unit
Reverse Voltage	V_R	$I_R=100\mu\text{A}$	30			
Forward Voltage	V_F	$I_F=200\text{mA}$			0.6	V
Reverse current	I_R	$V_R=10\text{V}$			1	μA

Order Informations

Device	Package	Marking	Shipping
RB520S30-2/TR	SOD-523	B	3000/Reel&Tape

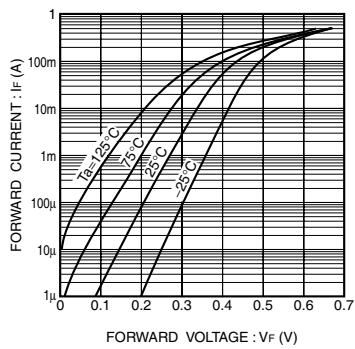
Typical characteristics (Ta=25°C, unless otherwise noted)


Fig. 1 Forward characteristics

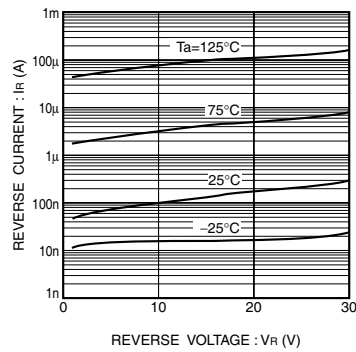


Fig. 2 Reverse characteristics

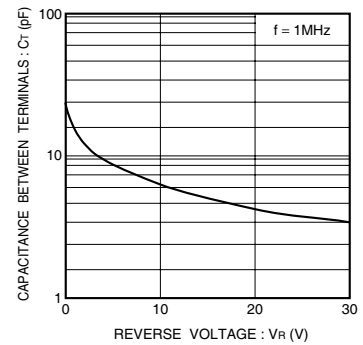
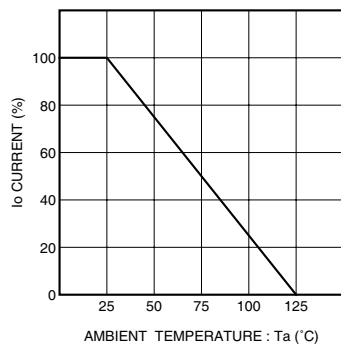
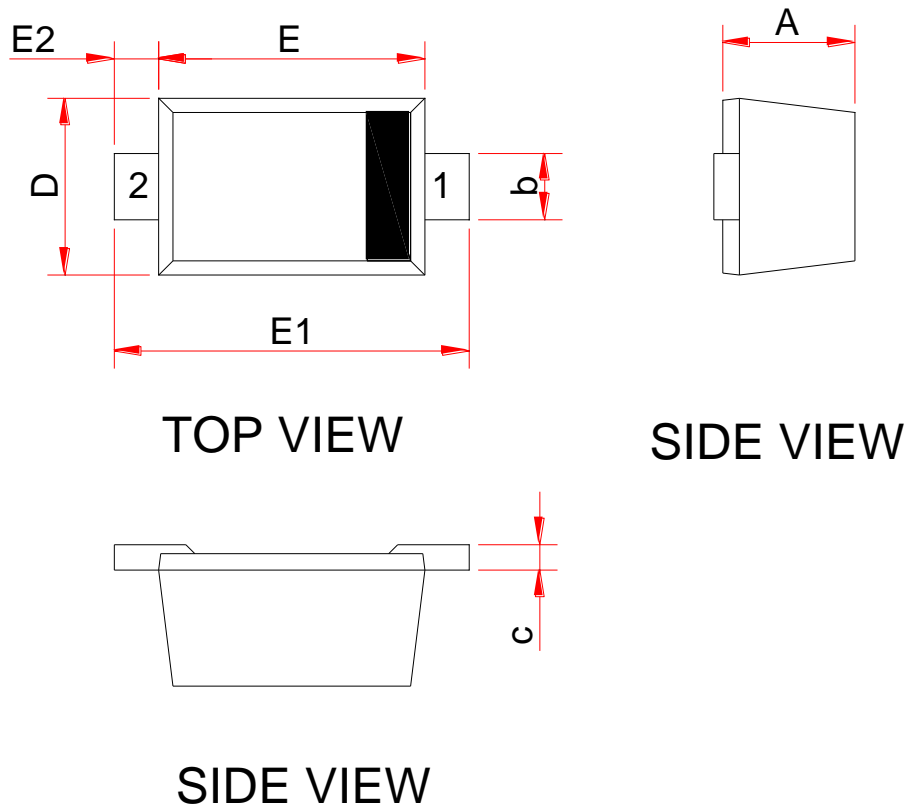


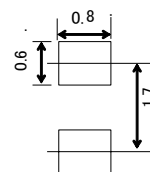
Fig. 3 Capacitance between terminals characteristics

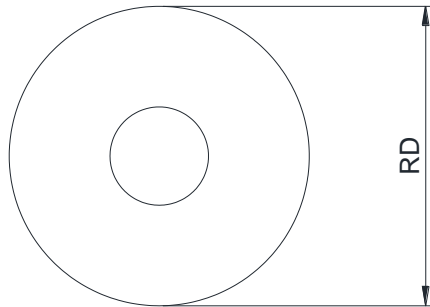
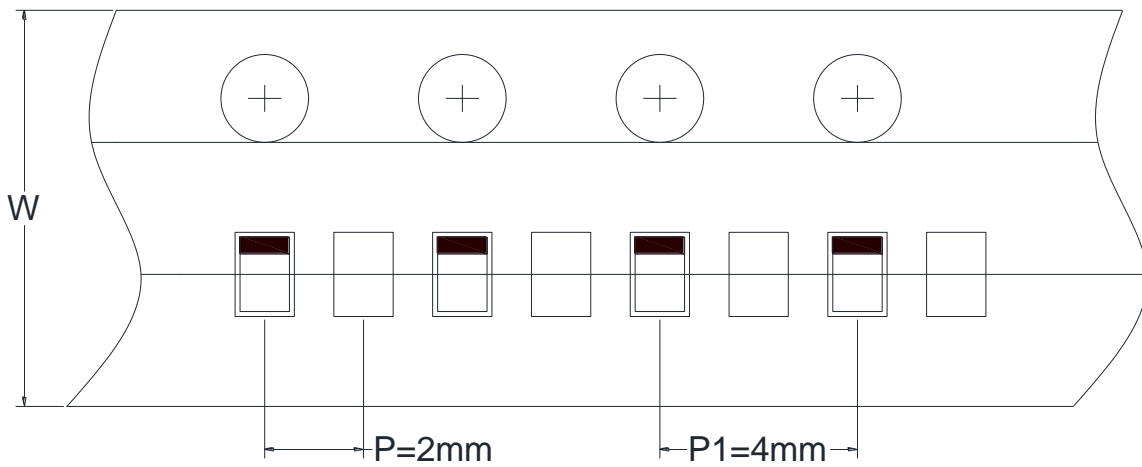
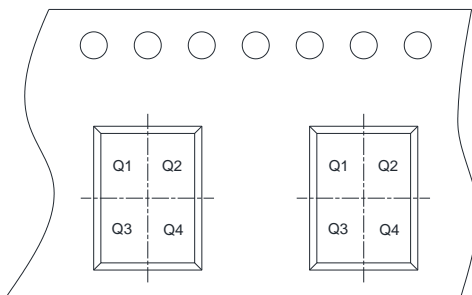

 Fig 4. Derating curve
(mounting on glass epoxy PCBs)

PACKAGE OUTLINE DIMENSIONS
SOD-523


Symbol	Dimensions in Millimeters		
	Min.	Typ.	Max.
A	0.50	-	0.70
b	0.25	-	0.35
c	0.07	-	0.20
D	0.70	-	0.90
E	1.10	-	1.30
E1	1.50	-	1.70
E2	0.15	-	0.25

●Land size figure (Unit : mm)



TAPE AND REEL INFORMATION
Reel Dimensions

Tape Dimensions

Quadrant Assignments For PIN1 Orientation In Tape



 User Direction of Feed

RD	Reel Dimension	<input checked="" type="checkbox"/> 7inch	<input type="checkbox"/> 13inch
W	Overall width of the carrier tape	<input checked="" type="checkbox"/> 8mm	<input type="checkbox"/> 12mm <input type="checkbox"/> 16mm
P1	Pitch between successive cavity centers	<input type="checkbox"/> 2mm	<input checked="" type="checkbox"/> 4mm <input type="checkbox"/> 8mm
Pin1	Pin1 Quadrant	<input checked="" type="checkbox"/> Q1	<input checked="" type="checkbox"/> Q2 <input type="checkbox"/> Q3 <input type="checkbox"/> Q4