

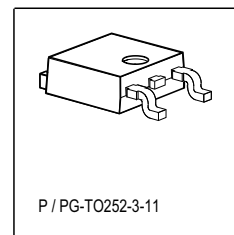


Features

- Logic Level Input
- Input Protection (ESD)
- Thermal shutdown
- Green product (RoHS compliant)
- Overload protection
- Short circuit protection
- Overvoltage protection
- Current limitation
- Analog driving possible

Product Summary

Drain source voltage	V_{DS}	42	V
On-state resistance	$R_{DS(on)}$	100	m Ω
Nominal load current	$I_{D(Nom)}$	2.4	A
Clamping energy	E_{AS}	2	J

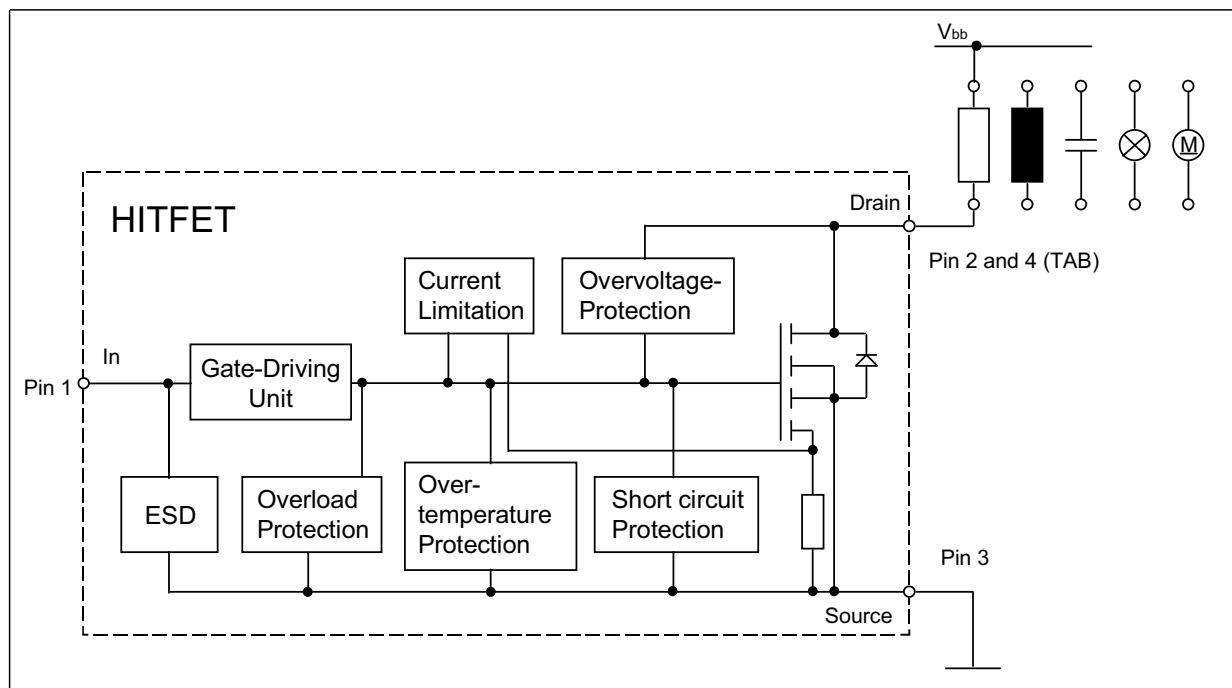


Application

- All kinds of resistive, inductive and capacitive loads in switching or linear applications
- μ C compatible power switch for 12 V DC applications
- Replaces electromechanical relays and discrete circuits

General Description

N channel vertical power FET in Smart SIPMOS[®] technology. Fully protected by embedded protection functions.



Maximum Ratings at $T_j = 25\text{ °C}$, unless otherwise specified ¹⁾

Parameter	Symbol	Value	Unit
Drain source voltage	V_{DS}	42	V
Drain source voltage for short circuit protection $T_j = -40 \dots +150\text{ °C}$	$V_{DS(SC)}$	20	
Continuous input current $-0.2V \leq V_{IN} \leq 10V$ $V_{IN} < -0.2V$ or $V_{IN} > 10V$	I_{IN}	no limit $ I_{IN} \leq 2$	mA
Operating temperature	T_j	$-40 \dots +150$	$^{\circ}\text{C}$
Storage temperature	T_{stg}	$-55 \dots +150$	
Power dissipation ⁴⁾ $T_C = 85\text{ °C}$ 6cm ² cooling area, $T_A = 85\text{ °C}$	P_{tot}	21 1.1	W
Unclamped single pulse inductive energy ¹⁾	E_{AS}	2	J
Load dump protection $V_{LoadDump}^{2)} = V_A + V_S$ $V_{IN} = 0$ and 10 V , $t_d = 400\text{ ms}$, $R_l = 2\ \Omega$, $R_L = 6\ \Omega$, $V_A = 13.5\text{ V}$	V_{LD}	58	V
Electrostatic discharge voltage (Human Body Model) according to ANSI/ESDA/JEDEC JS-001 (1.5 k Ω , 100 pF)	V_{ESD}	2	kV

Thermal resistance

junction - case:	R_{thJC}	3	K/W
SMD: junction - ambient @ min. footprint @ 6 cm ² cooling area ³⁾	R_{thJA}	115 55	

¹⁾ Not subject to production test, specified by design.

²⁾ $V_{LoadDump}$ is setup without the DUT connected to the generator per ISO 7637-1 and DIN 40839

³⁾ Device on 50mm*50mm*1.5mm epoxy PCB FR4 with 6cm² (one layer, 70 μm thick) copper area for drain connection. PCB mounted vertical without blown air.

⁴⁾ Not subject to production test, calculated by R_{thJA}/R_{thJC} and maximum allowed junction temperature

Electrical Characteristics

Parameter at $T_j = 25\text{ °C}$, unless otherwise specified	Symbol	Values			Unit
		min.	typ.	max.	
Characteristics					
Drain source clamp voltage $T_j = -40 \dots +150\text{ °C}$, $I_D = 10\text{ mA}$	$V_{DS(AZ)}$	42	-	55	V
Off-state drain current $T_j = -40 \dots +150\text{ °C}$ $V_{DS} = 32\text{ V}$, $V_{IN} = 0\text{ V}$	I_{DSS}	-	1.5	10	μA
Input threshold voltage $I_D = 0.6\text{ mA}$, $T_j = 25\text{ °C}$ $I_D = 0.6\text{ mA}$, $T_j = 150\text{ °C}$	$V_{IN(th)}$	1.3 0.8	1.7 -	2.2 -	V
On state input current	$I_{IN(on)}$	-	10	30	μA
On-state resistance $V_{IN} = 5\text{ V}$, $I_D = 2.2\text{ A}$, $T_j = 25\text{ °C}$ $V_{IN} = 5\text{ V}$, $I_D = 2.2\text{ A}$, $T_j = 150\text{ °C}$	$R_{DS(on)}$	- -	90 160	120 240	$\text{m}\Omega$
On-state resistance $V_{IN} = 10\text{ V}$, $I_D = 2.2\text{ A}$, $T_j = 25\text{ °C}$ $V_{IN} = 10\text{ V}$, $I_D = 2.2\text{ A}$, $T_j = 150\text{ °C}$	$R_{DS(on)}$	- -	70 130	100 200	
Nominal load current ¹⁾ $T_j < 150\text{ °C}$, $V_{IN} = 10\text{ V}$, $T_A = 85\text{ °C}$, SMD ²⁾	$I_{D(Nom)}$	2.4	-	-	A
Nominal load current ¹⁾ $V_{IN} = 10\text{ V}$, $V_{DS} = 0.5\text{ V}$, $T_C = 85\text{ °C}$, $T_j < 150\text{ °C}$	$I_{D(ISO)}$	3.5	-	-	
Current limit (active if $V_{DS} > 2.5\text{ V}$) ³⁾ $V_{IN} = 10\text{ V}$, $V_{DS} = 12\text{ V}$, $t_m = 200\text{ }\mu\text{s}$	$I_{D(lim)}$	10	15	20	

¹ Not subject to production test, calculated by R_{thJA}/R_{thJC} and $R_{DS(on)}$

² @ 6 cm^2 cooling area

³ Device switched on into existing short circuit (see diagram Determination of $I_{D(lim)}$). If the device is in on condition and a short circuit occurs, these values might be exceeded for max. $50\text{ }\mu\text{s}$.

Electrical Characteristics

Parameter at $T_j = 25\text{ °C}$, unless otherwise specified	Symbol	Values			Unit
		min.	typ.	max.	

Dynamic Characteristics

Turn-on time V_{IN} to 90% I_D : $R_L = 4.7\ \Omega$, $V_{IN} = 0$ to 10 V, $V_{bb} = 12$ V	t_{on}	-	40	100	μs
Turn-off time V_{IN} to 10% I_D : $R_L = 4.7\ \Omega$, $V_{IN} = 10$ to 0 V, $V_{bb} = 12$ V	t_{off}	-	70	100	
Slew rate on 70 to 50% V_{bb} : $R_L = 4.7\ \Omega$, $V_{IN} = 0$ to 10 V, $V_{bb} = 12$ V	$-dV_{DS}/dt_{on}$	-	0.4	1.5	$\text{V}/\mu\text{s}$
Slew rate off 50 to 70% V_{bb} : $R_L = 4.7\ \Omega$, $V_{IN} = 10$ to 0 V, $V_{bb} = 12$ V	dV_{DS}/dt_{off}	-	0.6	1.5	

Protection Functions¹⁾

Thermal overload trip temperature	T_{jt}	150	175	-	$^{\circ}\text{C}$
Input current protection mode	$I_{IN(Prot)}$	60	120	300	μA
Input current protection mode $T_j = 150\text{ °C}$	$I_{IN(Prot)}$	-	100	300	
Unclamped single pulse inductive energy ²⁾ $I_D = 2.2\text{ A}$, $T_j = 25\text{ °C}$, $V_{bb} = 12\text{ V}$	E_{AS}	2	-	-	J

Inverse Diode

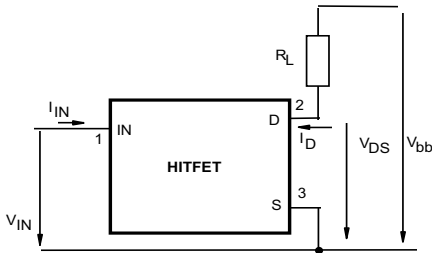
Inverse diode forward voltage $I_F = 10.9\text{ A}$, $t_m = 250\ \mu\text{s}$, $V_{IN} = 0\text{ V}$, $t_P = 300\ \mu\text{s}$	V_{SD}	-	1.0	-	V
---	----------	---	-----	---	---

¹⁾ Integrated protection functions are designed to prevent IC destruction under fault conditions described in the data sheet. Fault conditions are considered as "outside" normal operating range. Protection functions are not designed for continuous repetitive operation.

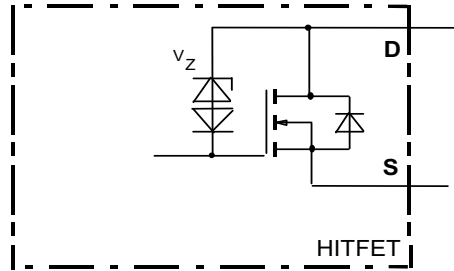
²⁾ Not tested, specified by design.

Block diagram

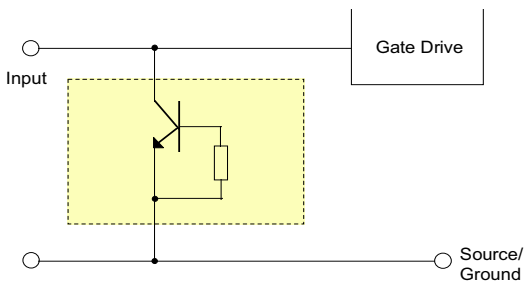
Terms



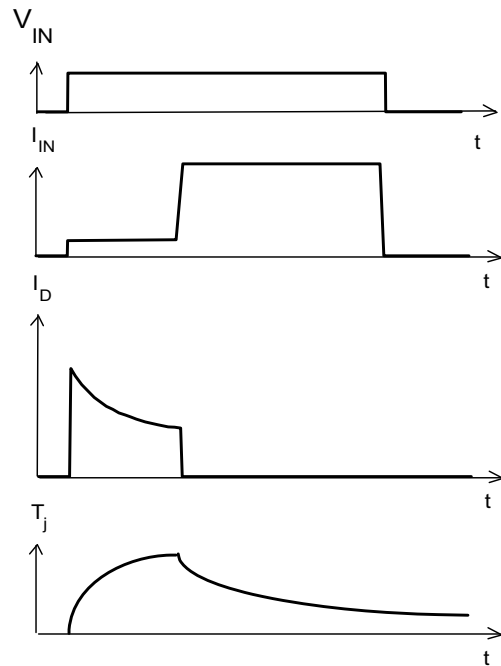
Inductive and overvoltage output clamp



Input circuit (ESD protection)



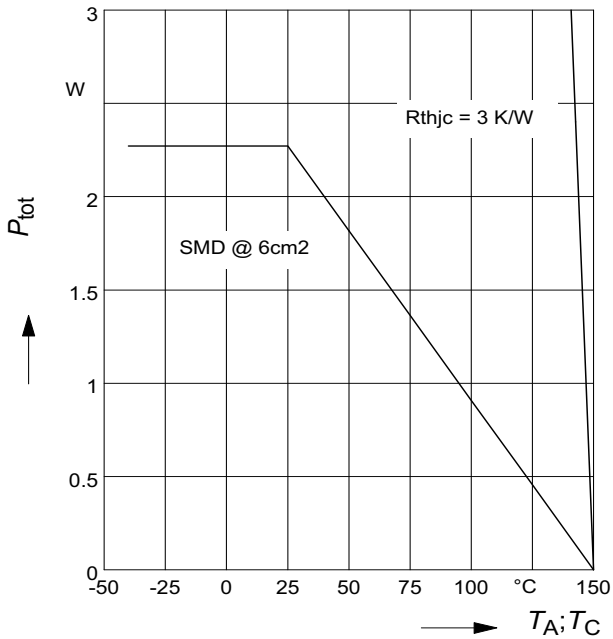
Short circuit behaviour



1 Maximum allowable power dissipation

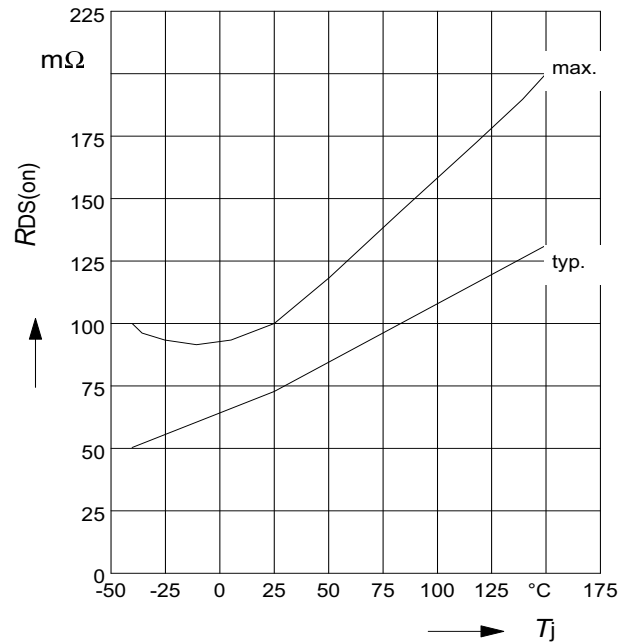
$P_{tot} = f(T_C)$ resp.

$P_{tot} = f(T_A) @ R_{thJA}=55 \text{ K/W}$



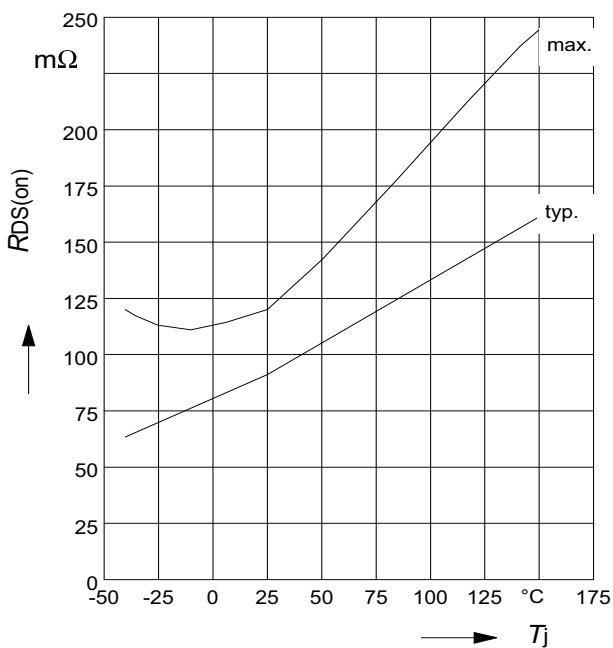
2 On-state resistance

$R_{ON} = f(T_j); I_D=2.2A; V_{IN}=10V$



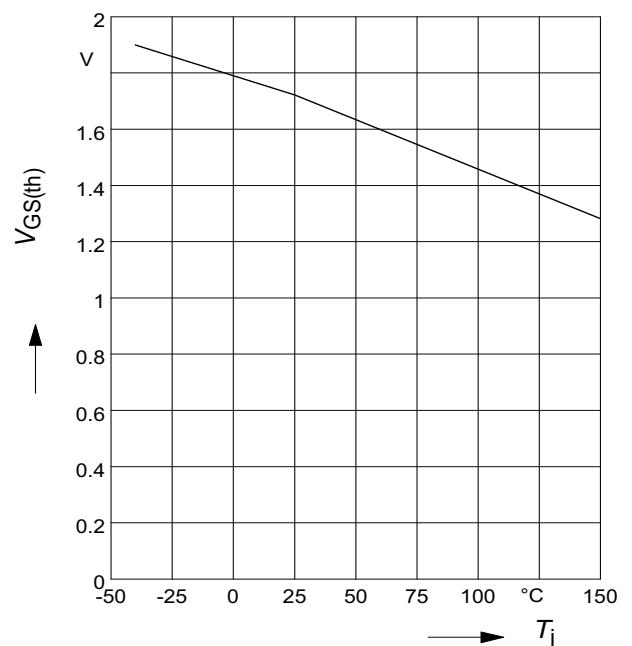
3 On-state resistance

$R_{ON} = f(T_j); I_D=2.2A; V_{IN}=5V$



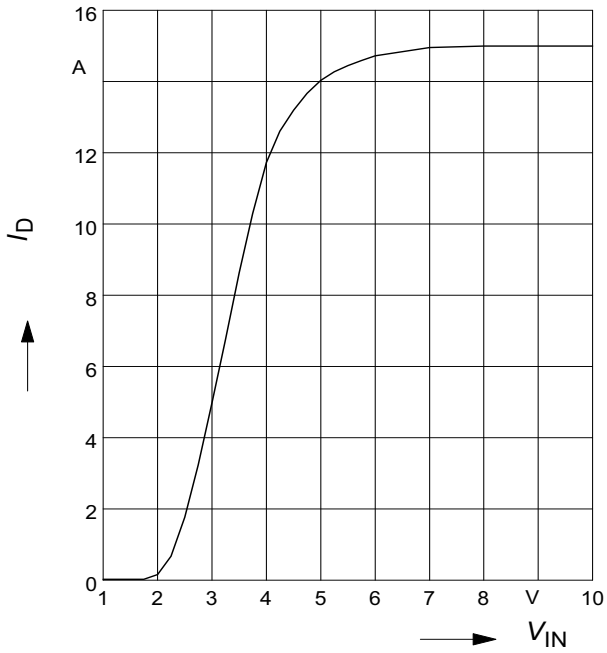
4 Typ. input threshold voltage

$V_{IN(th)} = f(T_j); I_D = 0.3 \text{ mA}; V_{DS} = 12V$



5 Typ. transfer characteristics

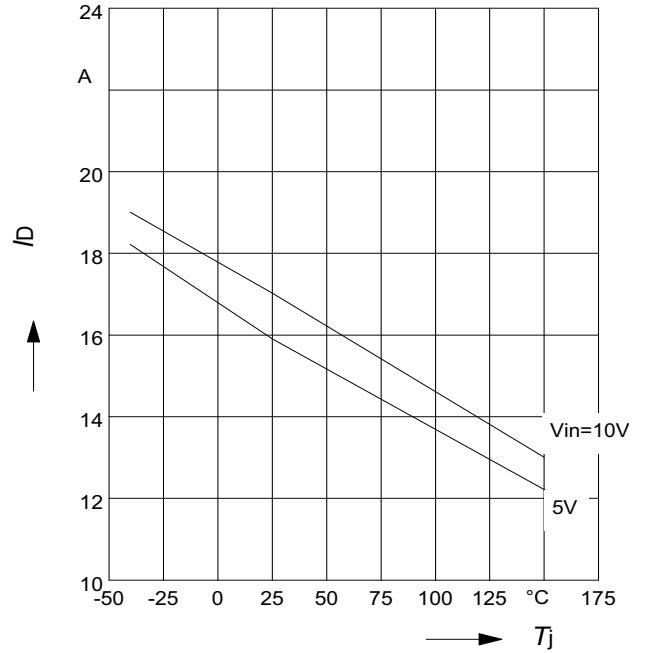
$I_D = f(V_{IN})$; $V_{DS} = 12V$; $T_{Jstart} = 25\text{ }^\circ\text{C}$



6 Typ. short circuit current

$I_{D(lim)} = f(T_j)$; $V_{DS} = 12V$

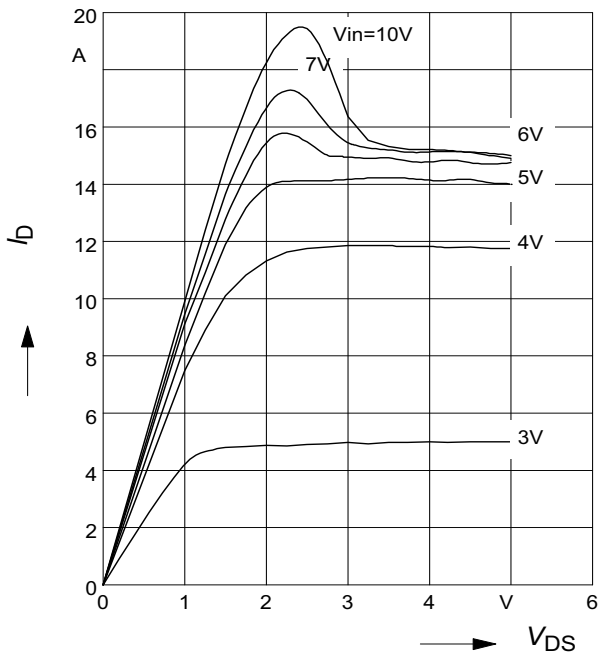
Parameter: V_{IN}



7 Typ. output characteristics

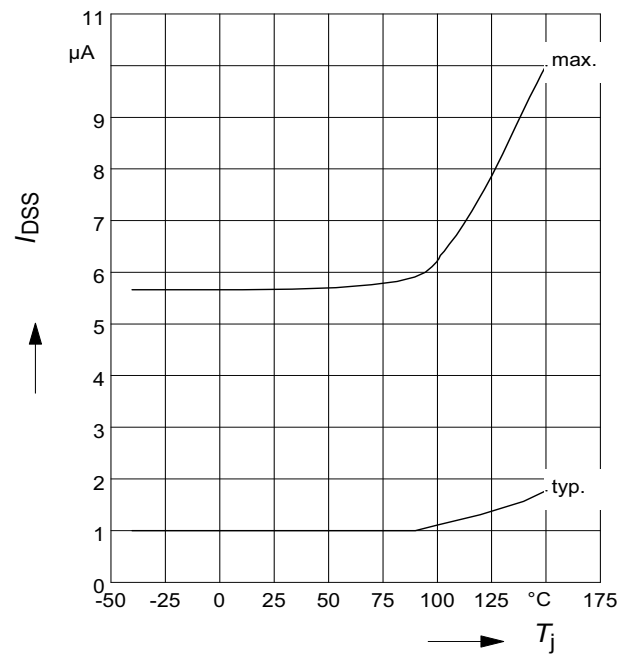
$I_D = f(V_{DS})$; $T_{Jstart} = 25\text{ }^\circ\text{C}$

Parameter: V_{IN}



8 Typ. off-state drain current

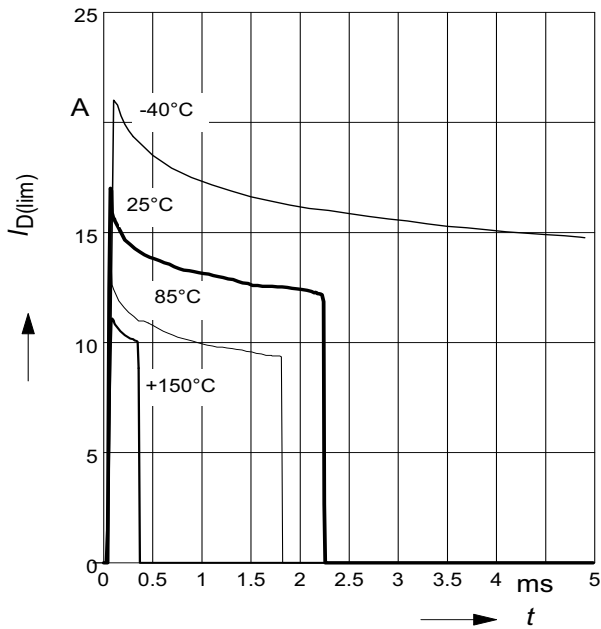
$I_{DSS} = f(T_j)$



9 Typ. overload current

$I_{D(lim)} = f(t)$, $V_{bb}=12\text{ V}$, no heatsink

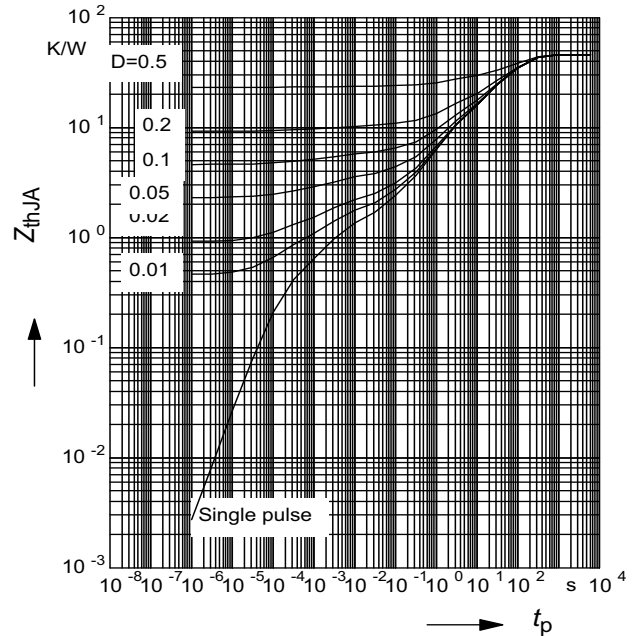
Parameter: T_{Jstart}



10 Typ. transient thermal impedance

$Z_{thJA}=f(t_p)$ @ 6 cm^2 cooling area

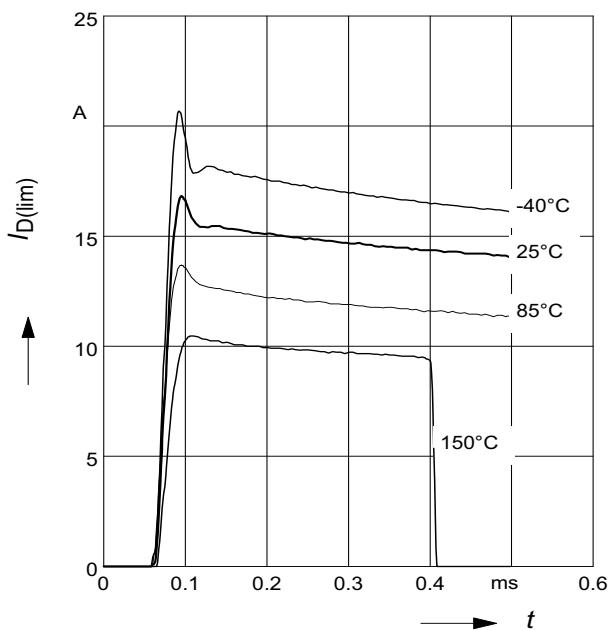
Parameter: $D=t_p/T$



11 Determination of $I_{D(lim)}$

$I_{D(lim)} = f(t)$; $t_m = 200\mu\text{s}$

Parameter: T_{Jstart}



1 Package Outlines

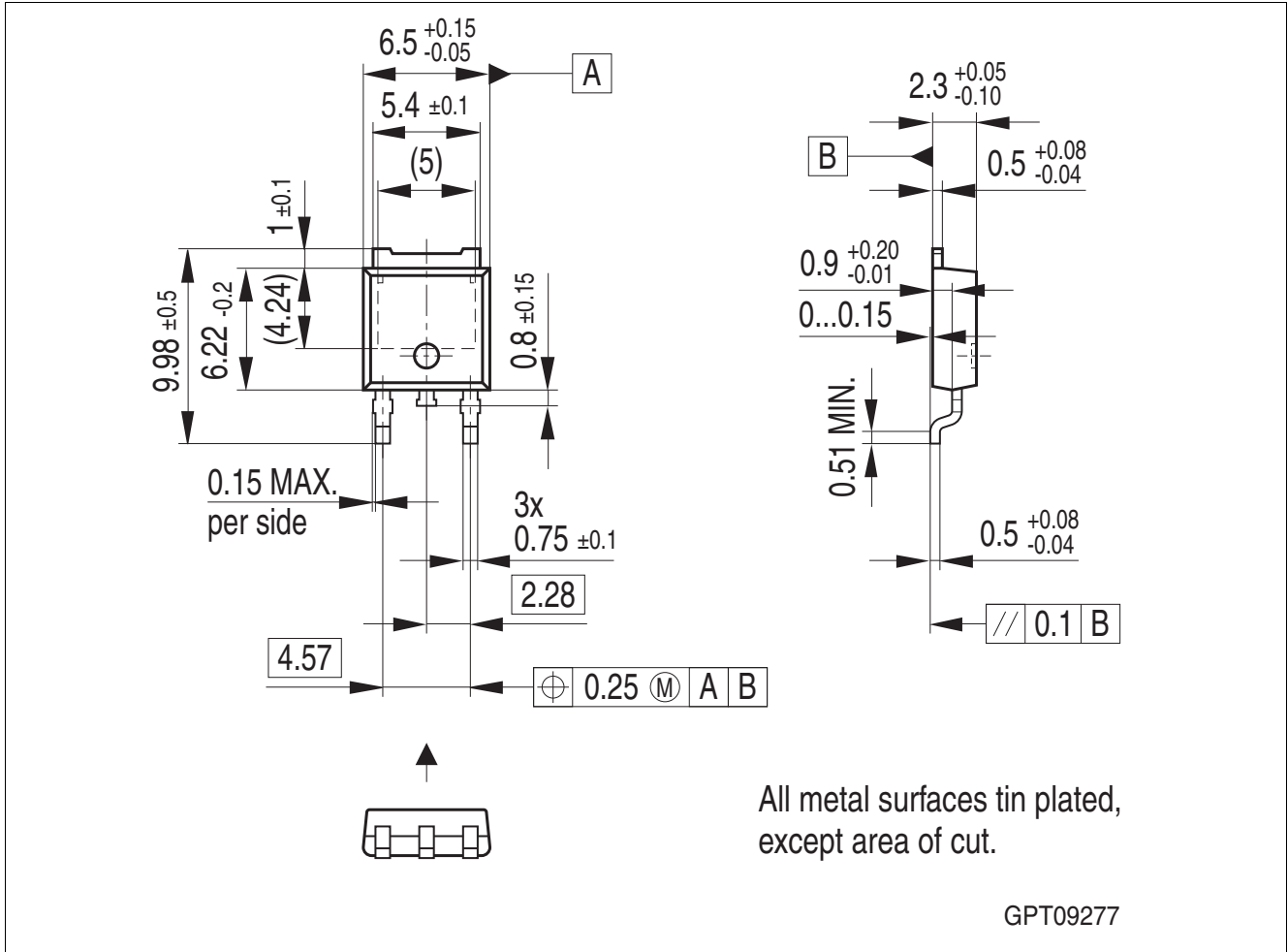


Figure 1 PG-TO252-3-11 (Plastic Dual Small Outline Package) (RoHS-Compliant)

To meet the world-wide customer requirements for environmentally friendly products and to be compliant with government regulations the device is available as a green product. Green products are RoHS-Compliant (i.e Pb-free finish on leads and suitable for Pb-free soldering according to IPC/JEDEC J-STD-020).

Please specify the package needed (e.g. green package) when placing an order

2 Revision History

Version	Date	Changes
Rev. 1.4	2013-03-07	page 2: - added footnote "Not subject to production test, specified by design" for chapter/table Maximum Ratings - added footnote "Not subject to prod. test, calculated ..." for parameter P_{tot} - updated ESD HBM standard in chapter "Maximum Ratings" page 3: - updated test condition I_D for parameter input threshold voltage $V_{IN(th)}$ - added footnote "Not subject to production test, calculated..." to the parameter Nominal load current $I_{D(nom)}$, $I_{D(ISO)}$
Rev. 1.3	2006-12-22	released automotive green and robust version (BTS) Package parameter (humidity and climatic) removed in Maximum ratings
Rev. 1.2	2006-12-11	AEC icon added RoHS icon added Green product (RoHS-compliant) added to the feature list Package information updated to green Green explanation added
Rev. 1.1	2006-08-08	released non automotive green version (ITS)
Rev. 1.0	2004-03-05	released production version

Edition 2013-03-07

**Published by
Infineon Technologies AG
81726 Munich, Germany**

**© Infineon Technologies AG 2013.
All Rights Reserved.**

Legal Disclaimer

The information given in this document shall in no event be regarded as a guarantee of conditions or characteristics ("Beschaffenhheitsgarantie"). With respect to any examples or hints given herein, any typical values stated herein and/or any information regarding the application of the device, Infineon Technologies hereby disclaims any and all warranties and liabilities of any kind, including without limitation warranties of non-infringement of intellectual property rights of any third party.

Information

For further information on technology, delivery terms and conditions and prices please contact your nearest Infineon Technologies Office (www.infineon.com).

Warnings

Due to technical requirements components may contain dangerous substances. For information on the types in question please contact your nearest Infineon Technologies Office.

Infineon Technologies Components may only be used in life-support devices or systems with the express written approval of Infineon Technologies, if a failure of such components can reasonably be expected to cause the failure of that life-support device or system, or to affect the safety or effectiveness of that device or system. Life support devices or systems are intended to be implanted in the human body, or to support and/or maintain and sustain and/or protect human life. If they fail, it is reasonable to assume that the health of the user or other persons may be endangered.