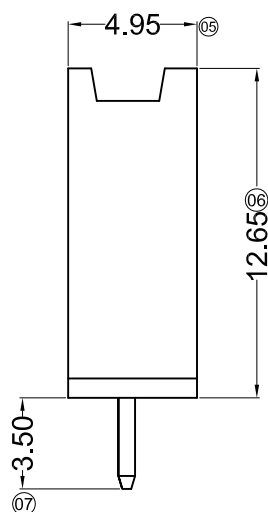
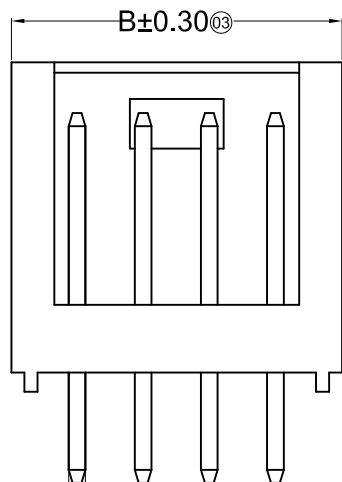
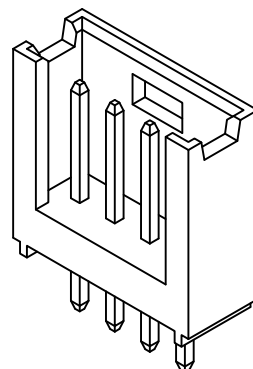
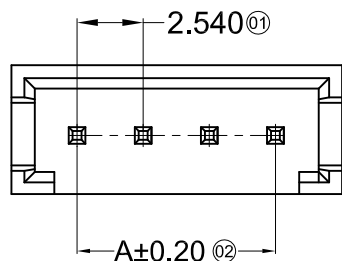


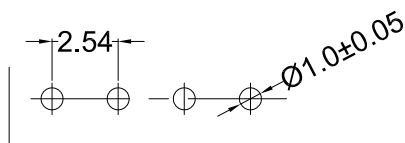
■ Specifications :

- Voltage rating: 250V AC / DC
- Current rating: 3A AC / DC
- Withstanding voltage: 800V AC/minute
- Temperature range: -25°C~+85°C
- Insulation resistance: ≥1000MΩ
- Contact resistance: ≤10mΩ
- After environmental testing: ≤20mΩ



| Poles | Dimensions(mm) | | Poles | Dimensions(mm) | |
|-------|----------------|-------|-------|----------------|-------|
| | A | B | | A | B |
| 02 | 2.54 | 7.70 | 13 | 30.48 | 35.60 |
| 03 | 5.08 | 10.20 | 14 | 33.02 | 38.10 |
| 04 | 7.62 | 12.70 | 15 | 35.56 | 40.70 |
| 05 | 10.16 | 15.20 | 16 | 38.10 | 43.20 |
| 06 | 12.70 | 17.80 | 17 | 40.64 | 45.70 |
| 07 | 15.24 | 20.30 | 18 | 43.18 | 48.20 |
| 08 | 17.78 | 22.90 | 19 | 45.72 | 50.70 |
| 09 | 20.32 | 25.40 | 20 | 48.26 | 53.20 |
| 10 | 22.86 | 28.00 | 22 | 53.34 | 58.50 |
| 11 | 25.40 | 30.50 | | | |
| 12 | 27.94 | 33.10 | | | |

④SQ 0.64



Recommended P.C.B Layout
General Tolerance±0.05

| | | | | | | | | | | | |
|----|--------------|------|------|----------------------------|-------|-------|--------|--|--------------|-------------------------------|----------|
| | | | | TOLERANCE UNLESS OTHERWISE | | DRAWN | CK tan | XFCN兴飞连接器有限公司 CONNECTORS XFCN CONNECTORS CO., LTD. | | SHEET | 1/1 |
| | | | | X. | ±0.30 | X° | ±5° | | | CHKD | DATE |
| | | | | .X | ±0.20 | .X° | ±2° | APPD | PRODUCT NAME | 2.54mm Crimp Style Connectors | |
| | | | | .XX | ±0.08 | .XX° | ±1° | VIEW | PART. NO. | SCALE | 1:1 |
| | | | | .XXX | ±0.03 | .XXX° | ±0.5° | | | M2530V-XX-BK | DWG. NO. |
| A0 | MODIFICATION | DRAW | DATE | | | | | | | | |