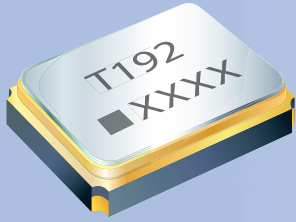


SMD Seam Temperature Sensing Crystals

1.6x1.2x0.65 mm OW Series



Features

- High precision and high frequency stability.
- Excellent thermal coupling between thermistor and crystal.
- Application in mobile communications.
- RoHS Compliant / Pb Free.

Electrical Specifications

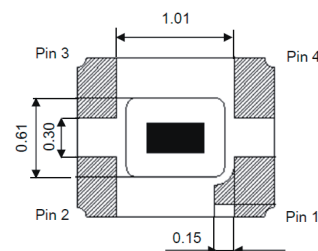
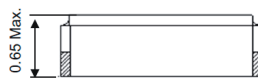
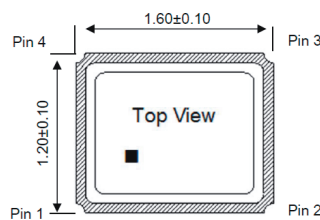
Item / Type	OW
Frequency Range	26 ~ 54 MHz
Frequency Tolerance (at 25°C)	± 10 ppm , or specify
Frequency Stability Over Operating Temperature Range	± 10 ppm , or specify
Operating Temperature Range	-30 ~ 85 °C or specify
Shunt Capacitance (C0)	3 pF Max.
Drive Level	1 ~ 100 μW (typical)
Load Capacitance	8 pF , 10 pF , 12 pF , or specify
Aging (at 25°C)	± 3 ppm / year Max.
Storage Temperature Range	-40 ~ +85 °C
Thermistor Resistance (25°C)	100 kΩ , or specify
Thermistor B-constant (25~50°C)	4250, or specify

Equivalent Series Resistance(ESR)

Fundamental

26 ~ 54 MHz 100 Ω Max.

Dimensions

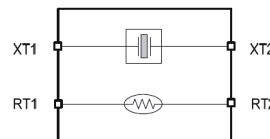


■ PIN FUNCTION

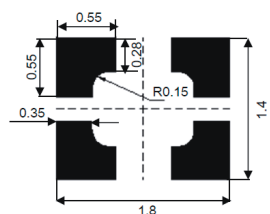
Pin	Symbol	Function
Pin 1	XT1	XTAL Terminal 1
Pin 2	RT2	Thermistor Terminal 2
Pin 3	XT2	XTAL Terminal 2
Pin 4	RT1	Thermistor Terminal 1

Note: Pin 2 is connected to the metal lid and thermistor
 Pin 4 is connected to the thermistor only

■ BLOCK DIAGRAM



■ SUGGESTED LAYOUT



Units: mm