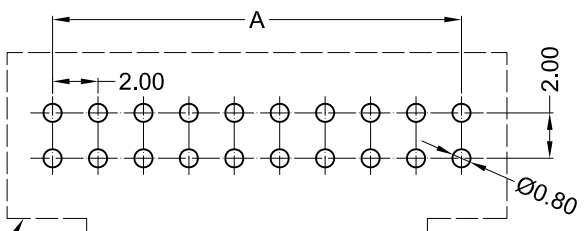
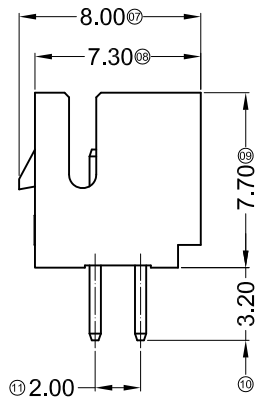
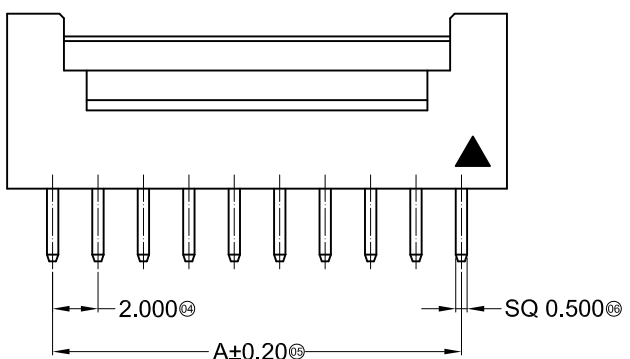


**Specifications :**

- Voltage rating: 250V AC / DC
- Current rating: 3A AC / DC
- Withstanding voltage: 1000V AC/minute
- Temperature range: -25°C~+85°C
- Insulation resistance: ≥1000MΩ
- Contact resistance: ≤30mΩ
- After environmental testing: ≤50mΩ

X2026 W V X-2\*XX D -XX XX XX  
 ① ② ③ ④ ⑤ ⑥ ⑦ ⑧ ⑨

- ① Series No.
- ② Category: W-WAFER
- ③ Welding Board Angle: V-Straight 180°
- ④ Welding Way: Blank-DIP
- ⑤ Row No.-Pin No.: 2\*XX-2\*04P~2\*30P
- ⑥ Plug the Pin & Special No.: D-With Lock in the middle
- ⑦ Material: 46 -PA46 94V-0, 9T-PA9T 94V-0, 4T-PA4T 94V-0
- ⑧ Plating Category: SN-Bright Tin Plating, V03-All Gold-Plated 3u"
- ⑨ Color: Blank-Natural Color



Recommended P.C.B Layout  
 General Tolerance±0.05

Poles	Dimensions (mm)			Poles	Dimensions (mm)			Poles	Dimensions (mm)		
	A	B	C		A	B	C		A	B	C
2*02	2.00	6.00	4.90	2*09	16.00	20.00	18.90	2*16	30.00	34.00	32.90
2*03	4.00	8.00	6.90	2*10	18.00	22.00	20.90	2*17	32.00	36.00	34.90
2*04	6.00	10.00	8.90	2*11	20.00	24.00	22.90	2*18	34.00	38.00	36.90
2*05	8.00	12.00	10.90	2*12	22.00	26.00	24.90	2*19	36.00	40.00	38.90
2*06	10.00	14.00	12.90	2*13	24.00	28.00	26.90	2*20	38.00	42.00	40.90
2*07	12.00	16.00	14.90	2*14	26.00	30.00	28.90	2*30	58.00	62.00	60.90
2*08	14.00	18.00	16.90	2*15	28.00	32.00	30.90				

X2026WV-2*XXD-4TSN	PA4T 94V-0	Brass	Tin-Plated	X2026H-D
X2026WV-2*XXD-9T/V03	PA9T 94V-0		Gold-Plated 3u"	X2026H-D
X2026WV-2*XXD-46SN	PA46 94V-0		Tin-Plated	X2026H-D
PART NO	Material	Material(Pin)	Finish(Pin)	Suitable XKB Terminal

For and on behalf of  
**XKB INDUSTRIAL PRECISION CO., LIMITED**  
 香港星坤工業精密有限公司

△ X					ANGULAR	±5°
△ X					L ≤ 4	±0.2
△ X					4 < L ≤ 16	±0.3
△ X					16 < L ≤ 63	±0.4
MARK	DESCRIPTION	DATE	REVISED	APPROVED	L > 63	±0.5
REVISIONS					UNSPECIFIED TOLERANCES	

DSND	DATE	SCALE: N/A	MODEL TYPE:
DWN	DATE	VIEW:	X2026WV-2*XXD-XXXXX
CHKD	DATE	UNIT: mm	PART NO.:
APPD	DATE	SIZE: A4	2.00mm Crimp Style Connectors
			DWG NO.:
		WEIGHT	SHEET
		1.0g	1/1
		REVISION	A0

**XKB INDUSTRIAL PRECISION CO., LIMITED**