

HSF

NOTES:

Current Rating: 5.0 AMP
 Voltage Rating: 250V AC/DC
 Temperature Range: -25°C to +85°C
 Contact Resistance: 10mΩ Max.
 Insulation Resistance: 1000MΩ Min.
 Withstanding Voltage: 1000V AC/Minute

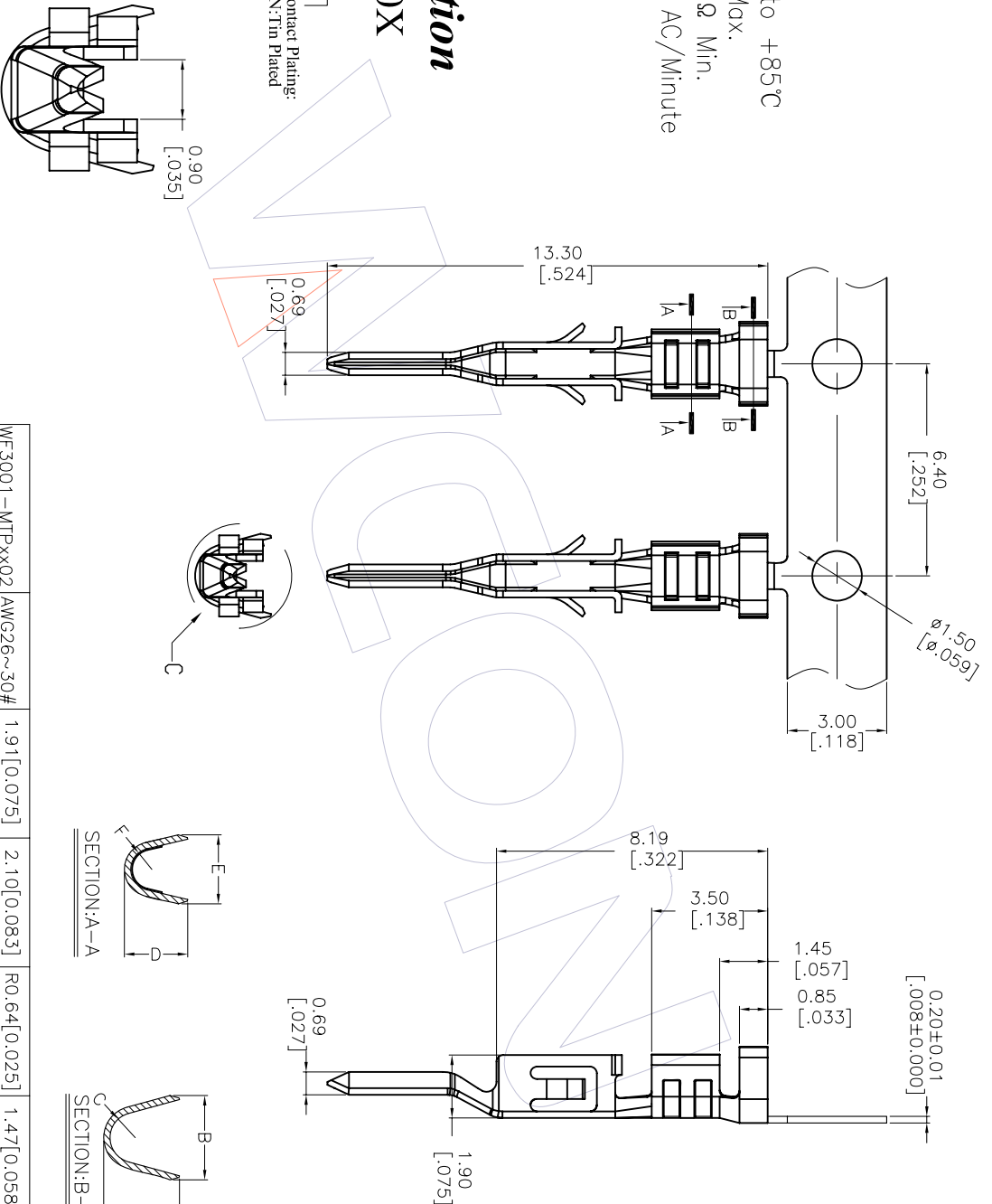
Material: Phosphor Bronze
 Contact plating: Tin Over Ni

Ordering Information

WF3001-M T P XX 0X

Terminal Material
P: Phosphor Bronze

Contact Plating:
SN: Tin Plated



Part NO	Wire Range	A	B	C	D	E
WF3001-MTPxX02	AWG26~30#	1.91 [0.075]	2.10 [0.083]	RO.64 [0.025]	1.47 [0.058]	1.65 [0.065]
WF3001-MTPxX01	AWG20~24#	2.29 [0.090]	2.54 [0.100]	RO.76 [0.030]	1.91 [0.075]	2.08 [0.082]
				C ± 0.13 [± 0.005]		
					D	E
						F ± 0.13 [± 0.005]

OPERATION	DRAW	DATE	SCALE	PART NO.
X.X	LKP	2012.06.22	1:1	WF3001-MTPXX0X
X.XX	CHECK		mm	
X.XXX			inch	
X.XXX	APPROVE		A4	
Angle			1/1	
DIM				

REV	DATE	MODIFICATION DESCRIPTION	CHANGE
A0	2012.06.22	NEW	LKP
			Angle
			DIM

WCON
 Http: www.wcon.com

WCON-Dongguan
 Tel: +86 769 85358920
 Fax: +86 769 85358915
 E-mail: sales@wcon.com

WCON-Kunshan
 Tel: +86 512 57468408
 Fax: +86 512 57468468
 E-mail: sales@wcon.com