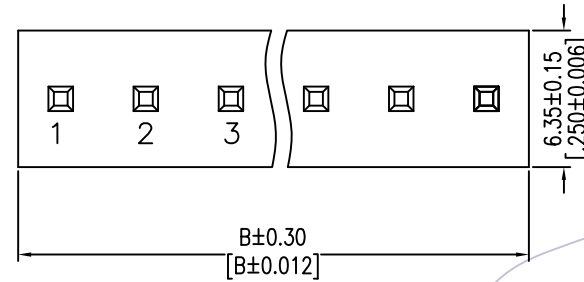
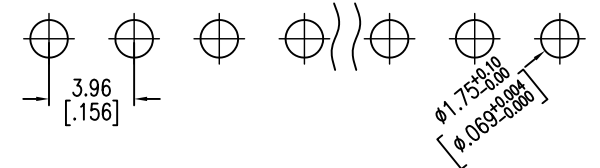


HSF

Recommended P.C.B Layout(Top Side)
(PCB BOARD TOLERANCE±0.05)

NOTES:
Current Rating:7.0AMP
Contact Resistance:20mΩ Max
Withstand Voltage:1500V AC/DC
Insulation Resistance:1000MΩ Min
Operation Temperature:-40℃ to +105℃

Contact Material:Brass
Contact plating:Au or Sn over Ni
Insulator Material:PA66 UL94V-2(STD)
or 94V-0 Δ



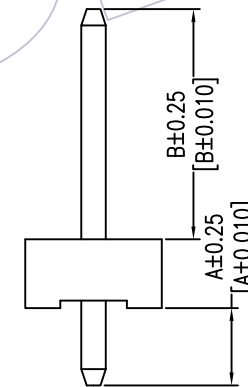
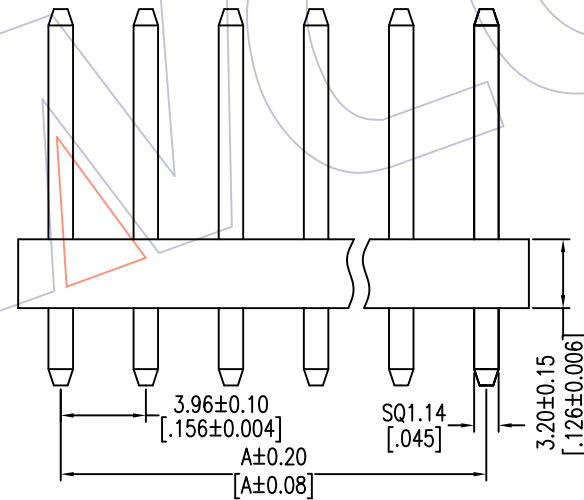
Specification & Ordering Information:

Circuit	Part No.	Dimension	
		A	B
02	WF3962-WS02WOX	3.96	7.92
03	WF3962-WS03WOX	7.92	11.88
04	WF3962-WS04WOX	11.88	15.84
05	WF3962-WS05WOX	15.84	19.80
06	WF3962-WS06WOX	19.80	23.76
07	WF3962-WS07WOX	23.76	27.72
08	WF3962-WS08WOX	27.72	31.68
09	WF3962-WS09WOX	31.68	35.64
10	WF3962-WS10WOX	35.64	39.60
11	WF3962-WS11WOX	39.60	43.56
12	WF3962-WS12WOX	43.56	47.52
13	WF3962-WS13WOX	47.52	51.48
14	WF3962-WS14WOX	51.48	55.44
15	WF3962-WS15WOX	55.44	59.40
16	WF3962-WS16WOX	59.40	63.36
17	WF3962-WS17WOX	63.36	67.32
18	WF3962-WS18WOX	67.32	71.28
19	WF3962-WS19WOX	71.28	75.24
20	WF3962-WS20WOX	75.24	79.20
21	WF3962-WS21WOX	79.20	83.16
22	WF3962-WS22WOX	83.16	87.12
23	WF3962-WS23WOX	87.12	91.08
24	WF3962-WS24WOX	91.08	95.04

Ordering Information

WF3962 -WS XX W 0 X

No. of pins
02-24P
Contact Plating
G0=Gold Flash
G3=10u"Gold
G4=15u"Gold
G5=30u"Gold
Blank=Tin
Color
W=White
Packing
0=PE Bag



ITEM	A	B
Standard	3.60	10.7
Alternate		

REV	DATE	MODIFICATION DESCRIPTION	CHANGE	OPERATION		DRAW Surong Xu	DATE 2016/09/01	SCALE	FIT	PART NO. SEE TAB
				X.X	±0.40					
A1	2016/09/01	Modify	Δ	X.XX	±0.25	CHECK	DATE	UNIT	mm inch	TITLE: 3.96 WAFER 180°
AO	2012/09/15	NEW	—	X.XXX	±0.15	APPROVE	DATE	SIZE	A4	Customer NO.
				Angle	± 3'			SHEET	1/1	
				DIM	TOL			PROJ.	ϕ	

WCON
Http: www.wcon.com

WCON-Dongguan
Tel: +86 769 85358920
Fax: +86 769 85358915
E-mail: sales@wcon.com

WCON-Kunshan
Tel: +86 512 57468408
Fax: +86 512 57468468
E-mail: salesks@wcon.com