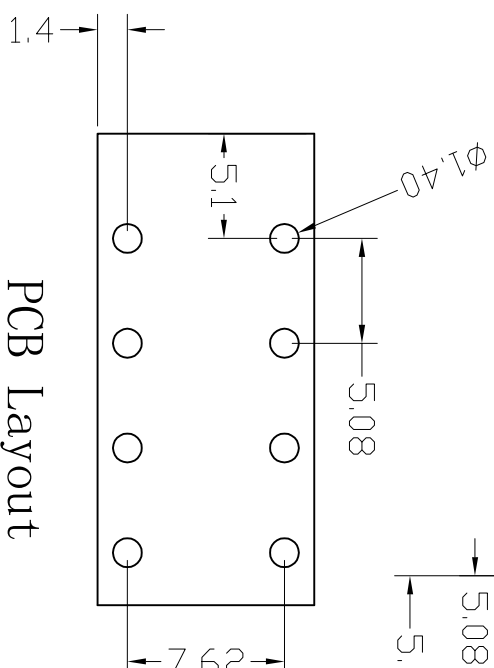


300V 10A 22-16AWG 1.5mm<sup>2</sup>  
 Poles: 1P-XXP  
 Pitch: 5.08mm (.200")



PCB Layout

**Materials**  
 Housing: PA66 (UL 94V-0)  
 Clamping: Stainless steel  
 Solder Pin: Brass, Tin Plated

序号/Rev.No. 更改记录/Revision note 签名/Signature 日期/Date

设计/Designed by	绘图/Drawn by	审核/Checked by	批准/Approved by	未注公差 General Tolerance	
				x . ±0.2	x ° ±2°
				.x ±0.1	.x° ±1°
				.xx ±0.05	.xx° ±0.5°
				.xxx ±0.01	
 XINLATYA ELECTRONIC CO., LTD		图名/Title	文件编号/Title No.	单位/Units: mm	
		XY122V-5.08	页序/Sheet		
备注/Remark					