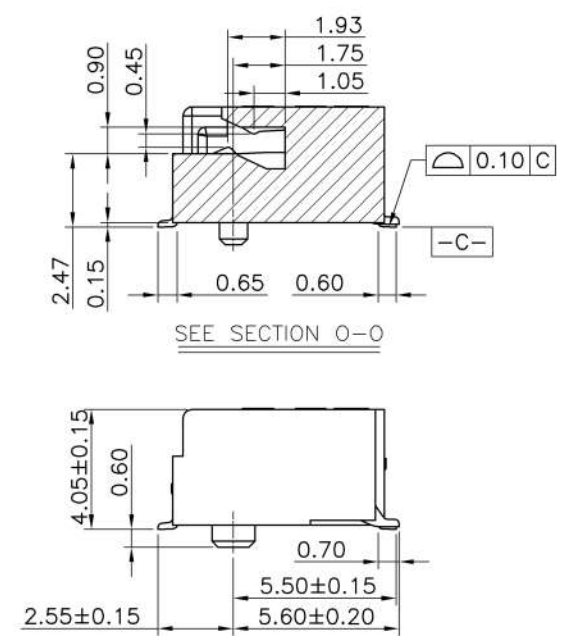
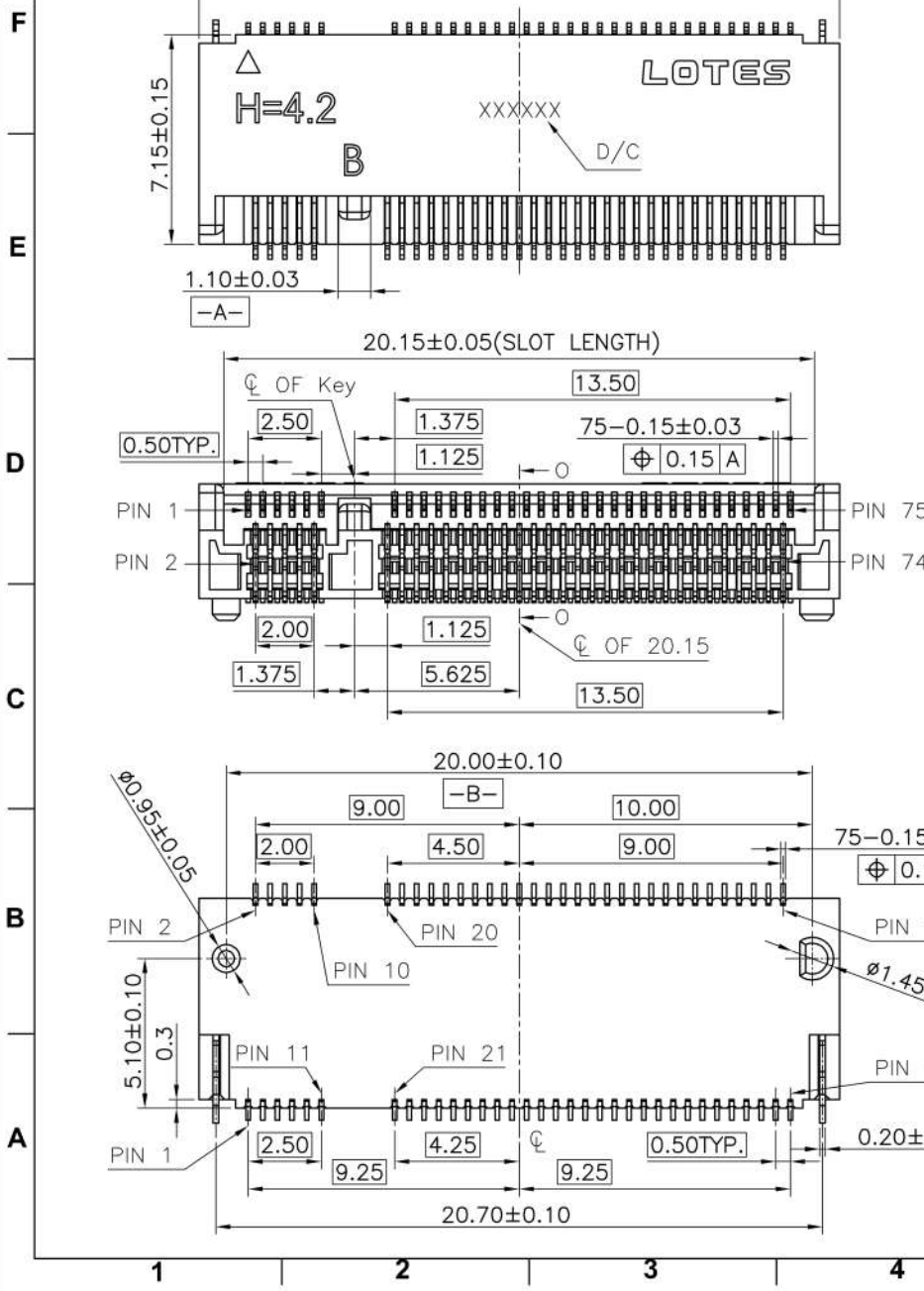


REV.	ECR/N NO./DESCRIPTION	DATE	DRAWN	CHECKED	APPROVE
1	SN14155	11/15'14	Lxh	Vito	Barney



GENERAL TOLERANCES UNLESS SPECIFIED		PART NO.	LOTES		
X ± 0.35	X° ± 3°	SEE TABLE			
XX ± 0.25	.X° ± 2°	APPROVED BY	TITLE 0.5 PITCH M.2 H4.2 (KEY B)		
XXX ± 0.15	.XX° ± 1°	Barney 11/15'14			
CUSTOMER DRAWING		CHECKED BY	DWG NO. AP-APCI0105		
		Vito 11/15'14			
SIZE	UNITS	DRAWN BY	SHEET SCALE REV		
A4	MM [INCH]	Lxh 11/15'14			

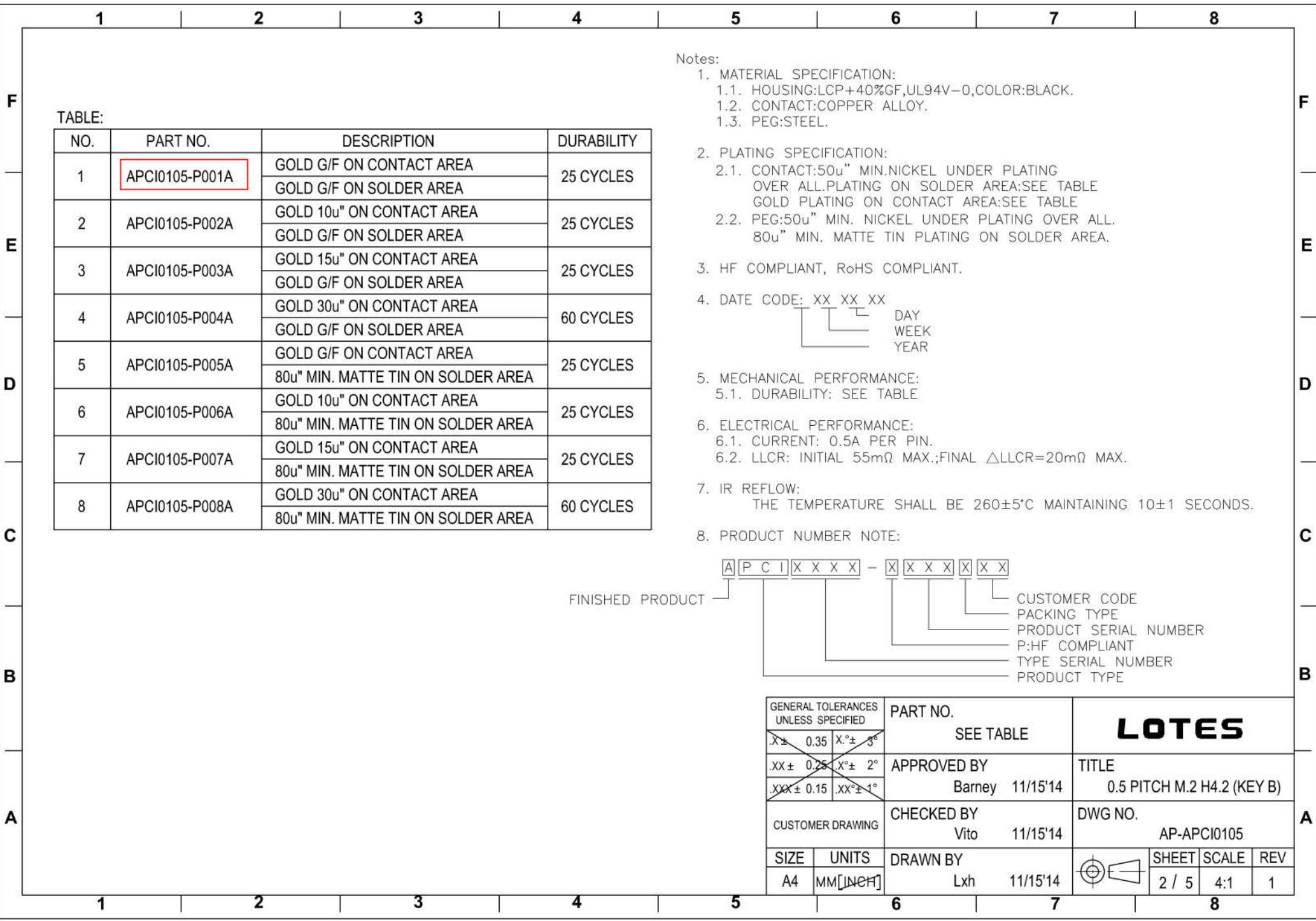
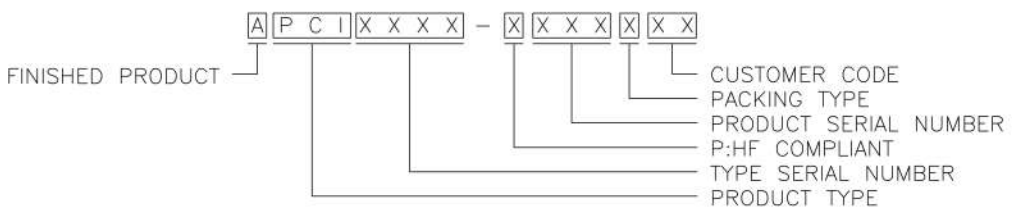


TABLE:

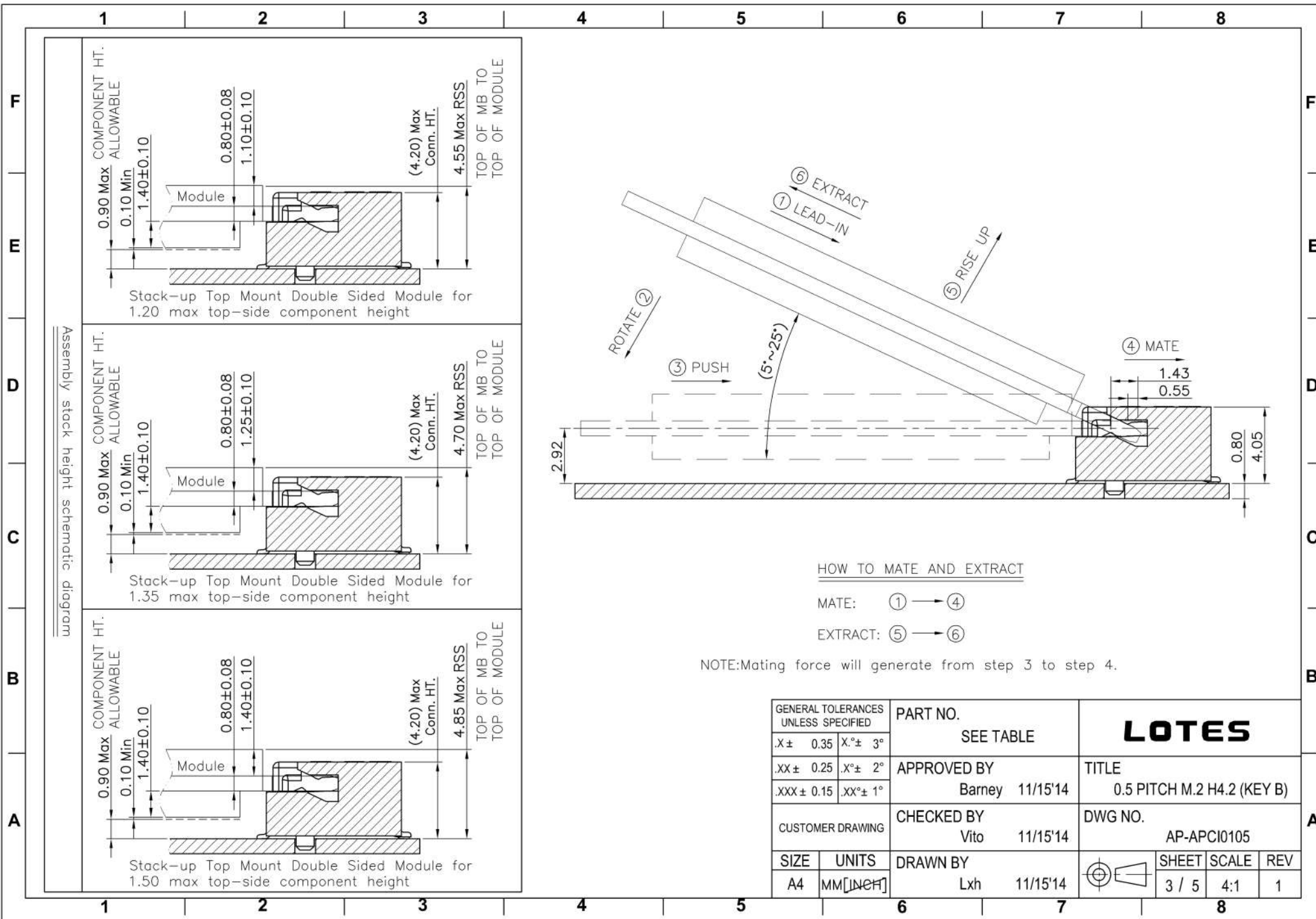
NO.	PART NO.	DESCRIPTION	DURABILITY
1	APCI0105-P001A	GOLD G/F ON CONTACT AREA	25 CYCLES
		GOLD G/F ON SOLDER AREA	
2	APCI0105-P002A	GOLD 10u" ON CONTACT AREA	25 CYCLES
		GOLD G/F ON SOLDER AREA	
3	APCI0105-P003A	GOLD 15u" ON CONTACT AREA	25 CYCLES
		GOLD G/F ON SOLDER AREA	
4	APCI0105-P004A	GOLD 30u" ON CONTACT AREA	60 CYCLES
		GOLD G/F ON SOLDER AREA	
5	APCI0105-P005A	GOLD G/F ON CONTACT AREA	25 CYCLES
		80u" MIN. MATTE TIN ON SOLDER AREA	
6	APCI0105-P006A	GOLD 10u" ON CONTACT AREA	25 CYCLES
		80u" MIN. MATTE TIN ON SOLDER AREA	
7	APCI0105-P007A	GOLD 15u" ON CONTACT AREA	25 CYCLES
		80u" MIN. MATTE TIN ON SOLDER AREA	
8	APCI0105-P008A	GOLD 30u" ON CONTACT AREA	60 CYCLES
		80u" MIN. MATTE TIN ON SOLDER AREA	

- Notes:
- MATERIAL SPECIFICATION:
 - HOUSING:LCP+40%GF,UL94V-0,COLOR:BLACK.
 - CONTACT:COPPER ALLOY.
 - PEG:STEEL.
 - PLATING SPECIFICATION:
 - CONTACT:50u" MIN.NICKEL UNDER PLATING OVER ALL.PLATING ON SOLDER AREA:SEE TABLE GOLD PLATING ON CONTACT AREA:SEE TABLE
 - PEG:50u" MIN. NICKEL UNDER PLATING OVER ALL. 80u" MIN. MATTE TIN PLATING ON SOLDER AREA.
 - HF COMPLIANT, RoHS COMPLIANT.
 - DATE CODE: XX XX XX
 - MECHANICAL PERFORMANCE:
 - DURABILITY: SEE TABLE
 - ELECTRICAL PERFORMANCE:
 - CURRENT: 0.5A PER PIN.
 - LLCR: INITIAL 55mΩ MAX.;FINAL ΔLLCR=20mΩ MAX.
 - IR REFLOW:

THE TEMPERATURE SHALL BE 260±5°C MAINTAINING 10±1 SECONDS.
 - PRODUCT NUMBER NOTE:



GENERAL TOLERANCES UNLESS SPECIFIED		PART NO.	LOTES			
X ± 0.35	X ° ± 3°	SEE TABLE				
.XX ± 0.25	X ° ± 2°	APPROVED BY	TITLE 0.5 PITCH M.2 H4.2 (KEY B)			
.XXX ± 0.15	.XX ° ± 1°	Barney 11/15'14				
CUSTOMER DRAWING		CHECKED BY	DWG NO.			
		Vito 11/15'14	AP-APCI0105			
SIZE	UNITS	DRAWN BY		SHEET	SCALE	REV
A4	MM [INCH]	Lxh 11/15'14		2 / 5	4:1	1



0.90 Max COMPONENT HT. ALLOWABLE

0.10 Min

1.40±0.10

0.80±0.08

1.10±0.10

(4.20) Max Conn. HT.

4.55 Max RSS

TOP OF MB TO TOP OF MODULE

0.90 Max COMPONENT HT. ALLOWABLE

0.10 Min

1.40±0.10

0.80±0.08

1.25±0.10

(4.20) Max Conn. HT.

4.70 Max RSS

TOP OF MB TO TOP OF MODULE

0.90 Max COMPONENT HT. ALLOWABLE

0.10 Min

1.40±0.10

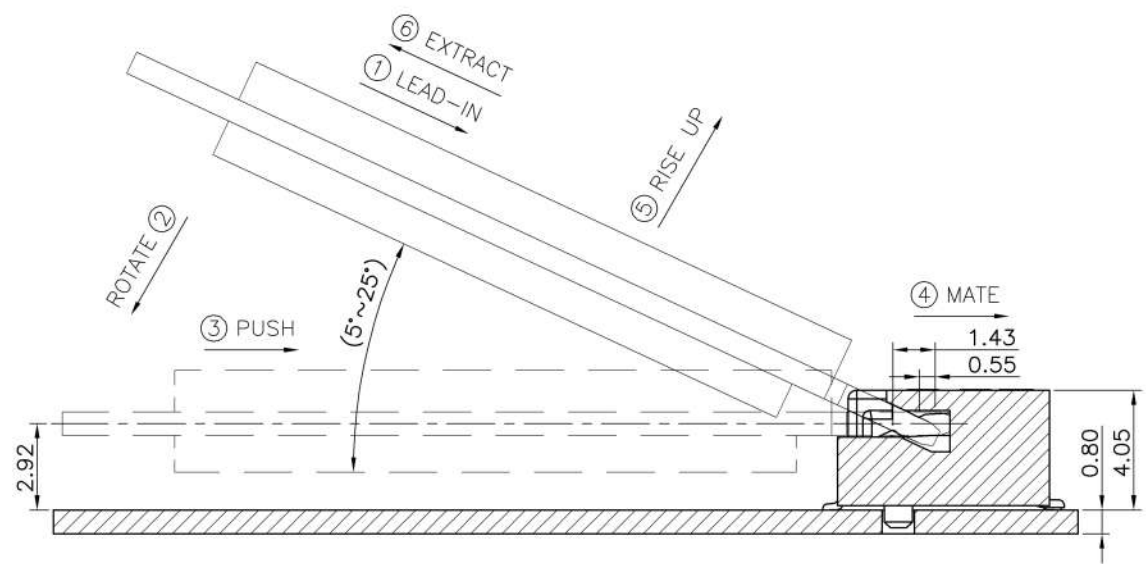
0.80±0.08

1.40±0.10

(4.20) Max Conn. HT.

4.85 Max RSS

TOP OF MB TO TOP OF MODULE



GENERAL TOLERANCES UNLESS SPECIFIED		PART NO. SEE TABLE	LOTES			
X ± 0.35	X° ± 3°					
.XX ± 0.25	.X° ± 2°		CHECKED BY Vito 11/15'14	DWG NO. AP-APCI0105		
XXX ± 0.15	.XX° ± 1°	CUSTOMER DRAWING	DRAWN BY Lxh 11/15'14	SHEET SCALE REV 3 / 5 4:1 1		

