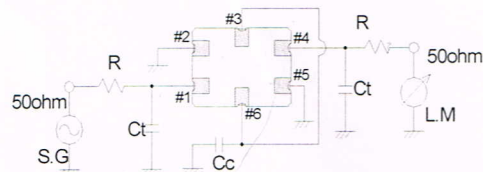
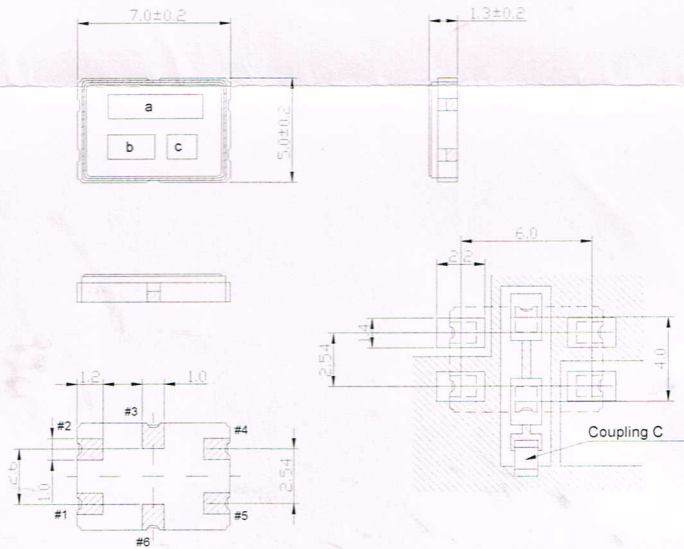


<p>1. Model</p> <p>2. Type</p> <p>3. Electrical Performances</p> <p>  3-1. Nominal Frequency</p> <p>  3-2. Pass Bandwidth</p> <p>  3-3. Stop Bandwidth</p> <p>  3-4. Insertion Loss</p> <p>  3-5. Ripple</p> <p>  3-6. Guaranteed Attenuation</p> <p>  3-7. Spurious</p> <p>  3-8. Terminating Impedance</p> <p>  3-9. Maximum Input Level</p> <p>  3-10. Insulation Resistance</p> <p>4. Operating Temperature Range</p> <p>5. Test Circuit</p>	<p>D51510GQ1</p> <p>DSF753SDF(4pole)</p> <p>51.550          MHz(fundamental)</p> <p>±5.00          kHz MIN./3dB</p> <p>±20.00        kHz MAX./35dB</p> <p>4.0            dB MAX. / minimum loss</p> <p>1.0            dB MAX.</p> <p>70             dB MIN. / f0-910kHz</p> <p>40             dB MIN.</p> <p>300            ohm+/-10%</p> <p>8.0            pF+/-0.5pF</p> <p>-10            dBm</p> <p>500            M ohm MIN. / DC 100V</p> <p style="text-align: center;">( Between Case and IN/OUT Terminal )</p> <p>-20 ~ +70 °C</p>
--	--



R=250ohm  
 Ct=8.0pF (floating capacity included)  
 Cc=18.5pF (floating capacity included)

6. Dimensions(unit:mm)



7. Marking

- (a) Model
- (b) Maker
- (c) Manufactured Year Month(\*1)

(\*1)Year The last digit of the year of the Christian Era should be corresponded to the Arabic figures.

JAN.	FEB.	MAR.	APR.	MAY.	JUN.	JUL.	AUG.	SEP.	OCT.	NOV.	DEC.
A	B	C	D	E	F	G	H	J	K	L	M

PIN	Connection
#1	IN
#2	GND
#3	Connect With #6
#4	OUT
#5	GND
#6	Connect With #3

			DWG. No.
	DATE	2014/12/17	