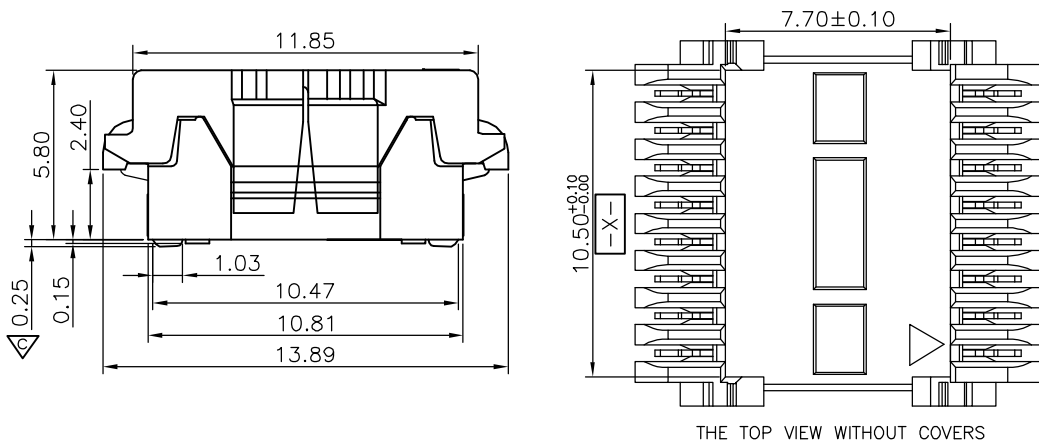
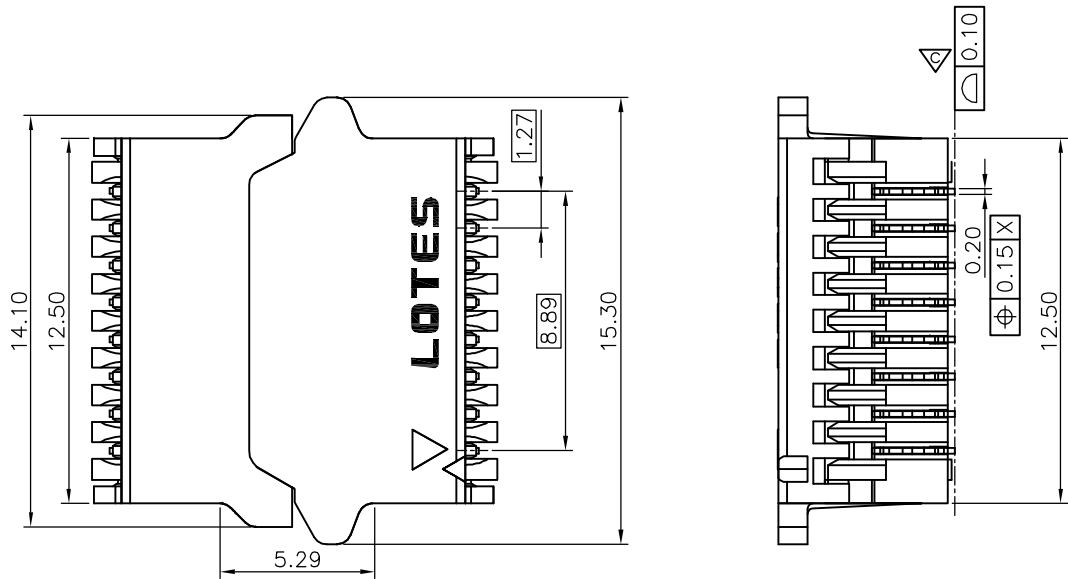


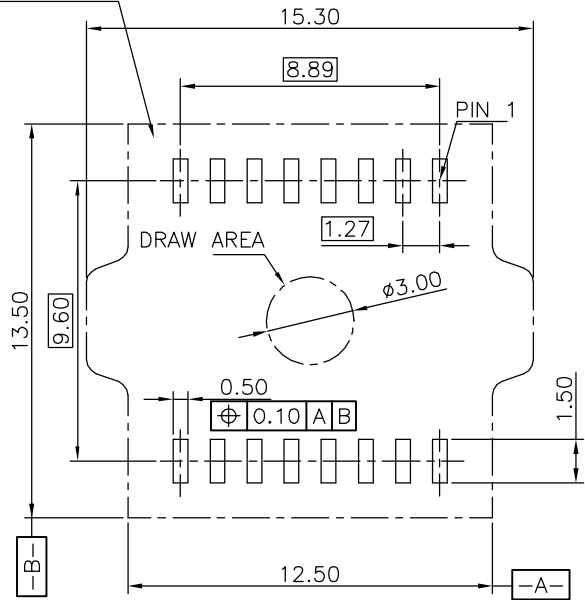
REV.	ECR/N NO./DESCRIPTION	DATE	DRAWN	CHECKED	APPROVE
8B	SN15***	04/16'15	SKY	Vito	Barney
8C	SN15***	07/08'15	Victor	Vito	Barney
8D	SN15***	09/15'15	Victor	Vito	Barney



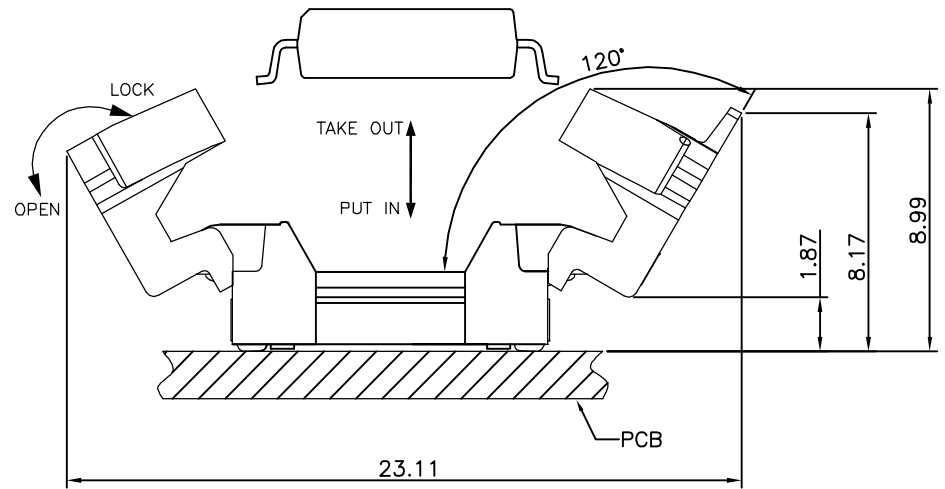
6	ACA-SPI-006-K05	Ni 50u" MIN, MATTE TIN 80u" MIN ON CONTACT AREA AND SOLDER AREA	BLACK
5	ACA-SPI-006-P09	Ni 50u" MIN, G/F 1 u" min ON CONTACT AREA AND SOLDER AREA	WHITE
4	ACA-SPI-006-P04	Ni 50u" MIN, 30u" Au ON CONTACT AERA, G/F 1u"min ON SOLDER AREA	BLACK
3	ACA-SPI-006-K02	Ni 50u" MIN, 15u" Au ON CONTACT AERA, G/F 1u"min ON SOLDER AREA	BLACK
2	ACA-SPI-006-P01	Ni 50u" MIN, G/F 1 u" min ON CONTACT AREA AND SOLDER AREA	BLACK
1	ACA-SPI-006-K01	Ni 50u" MIN, G/F 1 u" min ON CONTACT AREA AND SOLDER AREA	BLACK
NO.	PART NO.	DESCRIPTION	COLOR

GENERAL TOLERANCES UNLESS SPECIFIED		PART NO.	<b>LOTES</b>			
X ±0.35	X° ±3°	SEE TABLE				
XX ±0.25	X° ±2°	APPROVED BY Ron 3/01'07	TITLE SPI FLASH SOCKET FOR SOIC 16PIN			
XXX ±0.15	.XX° ±1°	CHECKED BY Kaka 3/01'07	DWG NO. AP-ACA-SPI-006			
SIZE	UNITS	DRAWN BY		SHEET	SCALE	REV
A4	MM [INCH]	Sun 3/01'07		1 / 4	4 : 1	8D

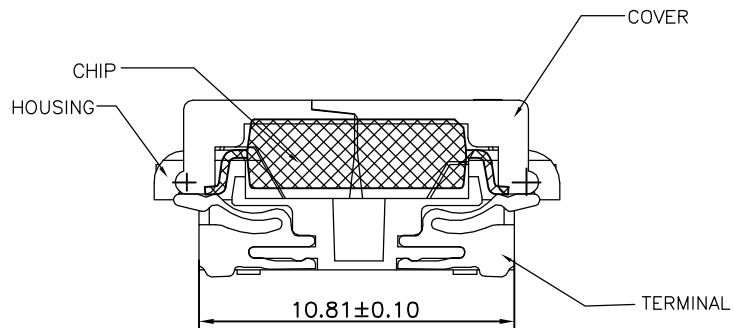
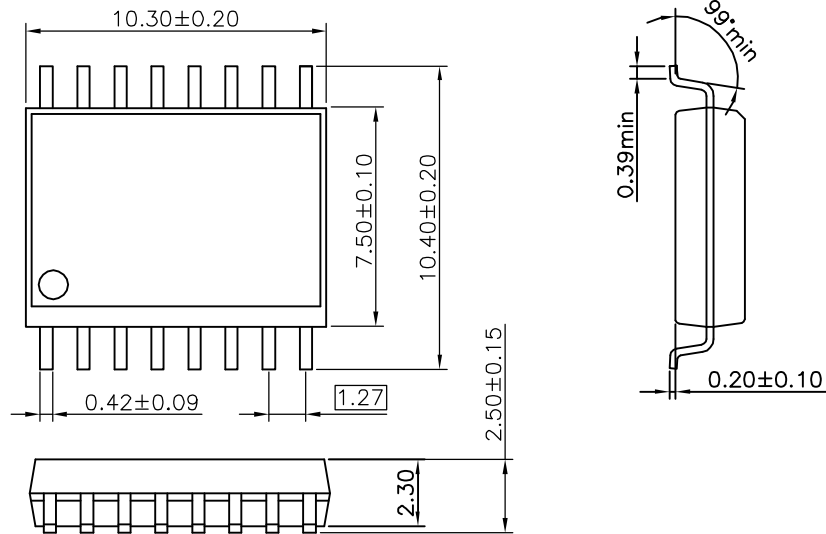
RECOMMENDED MATING  
ASSY'S OUTLINE



RECOMMENDED PCB LAYOUT FOR USE  
CONNECTOR MOUNTING SIDE



GENERAL TOLERANCES UNLESS SPECIFIED		PART NO. SEE TABLE	<b>LOTES</b>			
X ±0.35	X° ±3°					
XX ±0.25	X° ±2°	APPROVED BY Ron 3/01'07	TITLE SPI FLASH SOCKET FOR SOIC 16PIN			
XXX ±0.15	.XX° ±1°	CHECKED BY Kaka 3/01'07	DWG NO. AP-ACA-SPI-006			
SIZE	UNITS	DRAWN BY		SHEET	SCALE	REV
A4	MM [INCH]	Sun 3/01'07		2 / 4	4 : 1	8D



NOTES: 1.MATERIAL:

- 1).HOUSING:LCP,UL-94V0,COLOR:SEE TABLE
- 2).COVER:LCP,UL-94V0,COLOR:SEE TABLE
- 3).CONTACT:Phosphor Bronze.

2.FINISH:SEE TABLE

3.RoHS COMPLIANT. HF COMPLIANT

4.ELECTRICAL PERFORMANCE

Contact resistance:30mΩ MAX.  
Insulation resistance:1000MΩ MIN

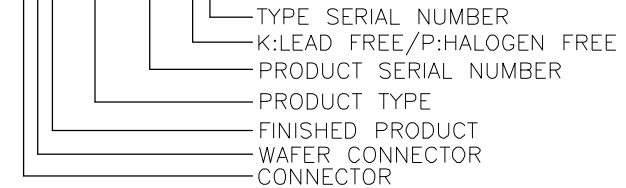
5.MECHANICAL PERFORMANCE

Durability:25 cycles

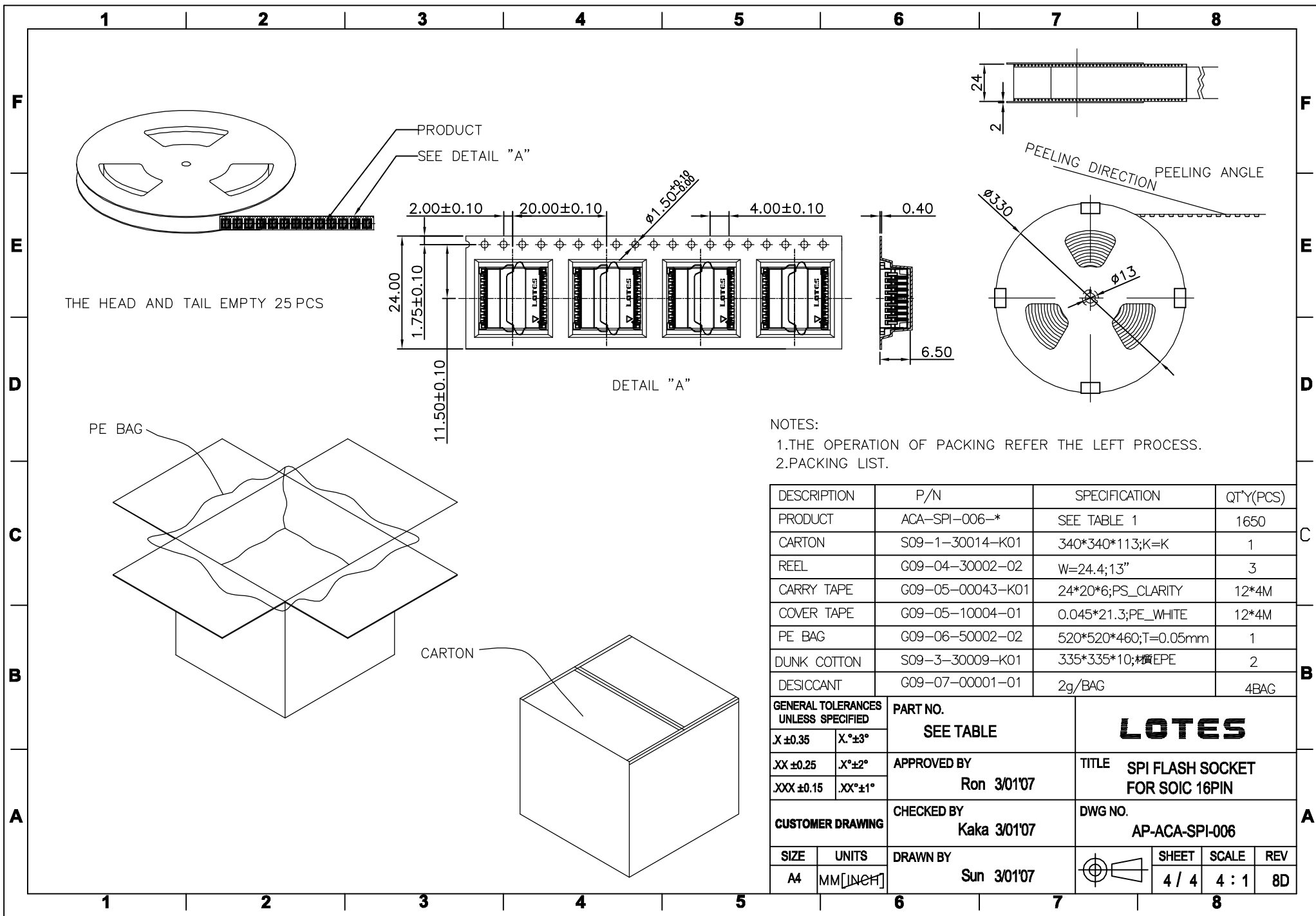
6.IR REFLOW TEMPERATURE:260°C+/-5 °C FOR 10 SECONDS MAX.

7.PRODUCT NUMBER NOTE:

ACA-SPI-\*\*\*-\*\*\*



GENERAL TOLERANCES UNLESS SPECIFIED		PART NO. SEE TABLE	<b>LOTES</b>			
X ±0.35	X°±3°					
XX ±0.25	X°±2°	APPROVED BY Ron 3/01'07	TITLE SPI FLASH SOCKET FOR SOIC 16PIN			
XXX ±0.15	.XX°±1°	CHECKED BY Kaka 3/01'07	DWG NO. AP-ACA-SPI-006			
SIZE	UNITS	DRAWN BY		SHEET	SCALE	REV
A4	MM [INCH]	Sun 3/01'07		3 / 4	4 : 1	8D



NOTES:  
 1.THE OPERATION OF PACKING REFER THE LEFT PROCESS.  
 2.PACKING LIST.

DESCRIPTION	P/N	SPECIFICATION	QT*Y(PCS)
PRODUCT	ACA-SPI-006-*	SEE TABLE 1	1650
CARTON	S09-1-30014-K01	340*340*113;K=K	1
REEL	G09-04-30002-02	W=24.4;13"	3
CARRY TAPE	G09-05-00043-K01	24*20*6;PS_CLARITY	12*4M
COVER TAPE	G09-05-10004-01	0.045*21.3;PE_WHITE	12*4M
PE BAG	G09-06-50002-02	520*520*460;T=0.05mm	1
DUNK COTTON	S09-3-30009-K01	335*335*10;材EPE	2
DESICCANT	G09-07-00001-01	2g/BAG	4BAG

GENERAL TOLERANCES UNLESS SPECIFIED		PART NO. <b>SEE TABLE</b>	<b>LOTES</b>			
X ±0.35	X° ±3°					
XX ±0.25	X° ±2°					
XXX ±0.15	.XX° ±1°	APPROVED BY <b>Ron 3/01'07</b>	TITLE <b>SPI FLASH SOCKET FOR SOIC 16PIN</b>			
CUSTOMER DRAWING		CHECKED BY <b>Kaka 3/01'07</b>	DWG NO. <b>AP-ACA-SPI-006</b>			
SIZE	UNITS	DRAWN BY <b>Sun 3/01'07</b>		SHEET	SCALE	REV
A4	MM [INCH]			4 / 4	4 : 1	8D