



---

# SK3070R

Band7, RF-Rx SAW Filter  
Revision 0 : April 2016

MSL 3 Device



- Electrical Characteristics
  - Package Dimensions
  - Testing Environment
  - Frequency Characteristics
-

## □ Electrical Characteristics

### Maximum Ratings

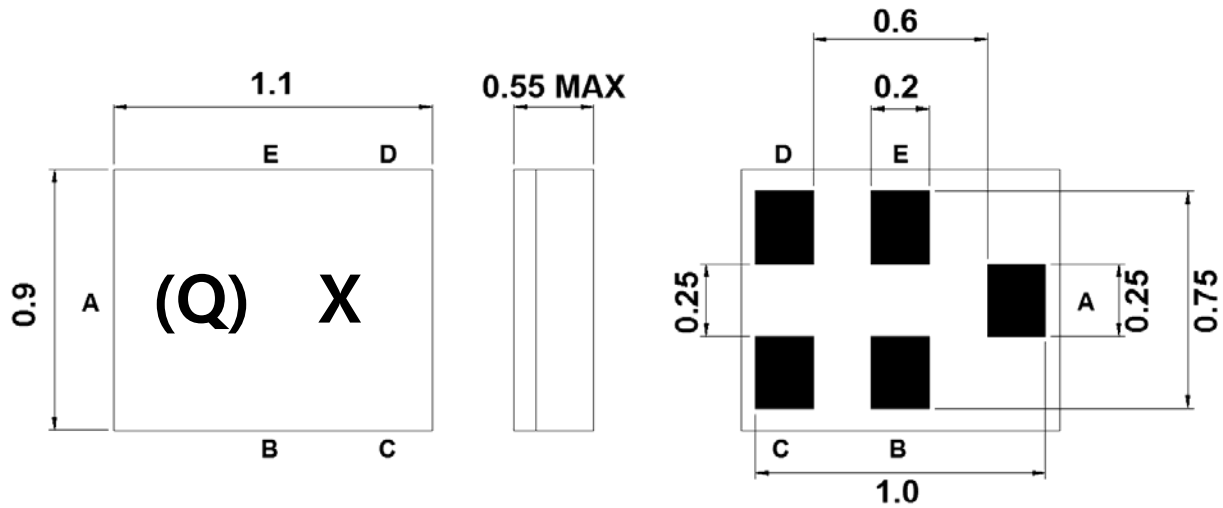
Parameters Description	Unit	Minimum	Typical	Maximum
Operating Temperature Range	°C	-30	-	+85
Storage Temperature Range	°C	-40	-	+85
Maximum DC Voltage	V	-	-	-
Maximum Input Power	dBm	-	-	10
Source Impedance (Unbalanced)	Ω	-	50//5.1nH	-
Load Impedance (Unbalanced)	Ω	-	50//5.1nH	-
Package type & size	C14			
Length x Width	mm <sup>2</sup>	-	1.1 x 0.9	-
Height	mm	-	-	0.55
ESD	HBM:1A(499V) MM:M1(100V)			

### Electrical Specification

Parameters Description	Unit	Minimum	Typical	Maximum
Center Frequency (Fo)	MHz	-	2655.0	-
Insertion Loss within 2620.0 ~ 2690.0 MHz	dB	-	2.3	3.0
Amplitude Ripple within 2620.0 ~ 2690.0 MHz	dB <sub>p-p</sub>	-	0.7	1.5
Input VSWR within 2620.0 ~ 2690.0 MHz	-	-	1.6	2.0
Output VSWR within 2620.0 ~ 2690.0 MHz	-	-	1.7	2.2
<b>Attenuation</b>				
10 ~ 2400.0 MHz	dB	28	31	-
45.0 MHz	dB	50	65	-
2400.0 ~ 2500.0 MHz	dB	30	33	-
2500.0 ~ 2570.0 MHz	dB	35	42	-
2570.0 ~ 2600.0 MHz	dB	2	4.5	-
2775.0 ~ 6000.0 MHz	dB	15	30	-
7620.0 ~ 7830.0 MHz	dB	15	28	-
7860.0 ~ 8000.0 MHz	dB	15	27	-

**Notes :** (1) With Matching Network .

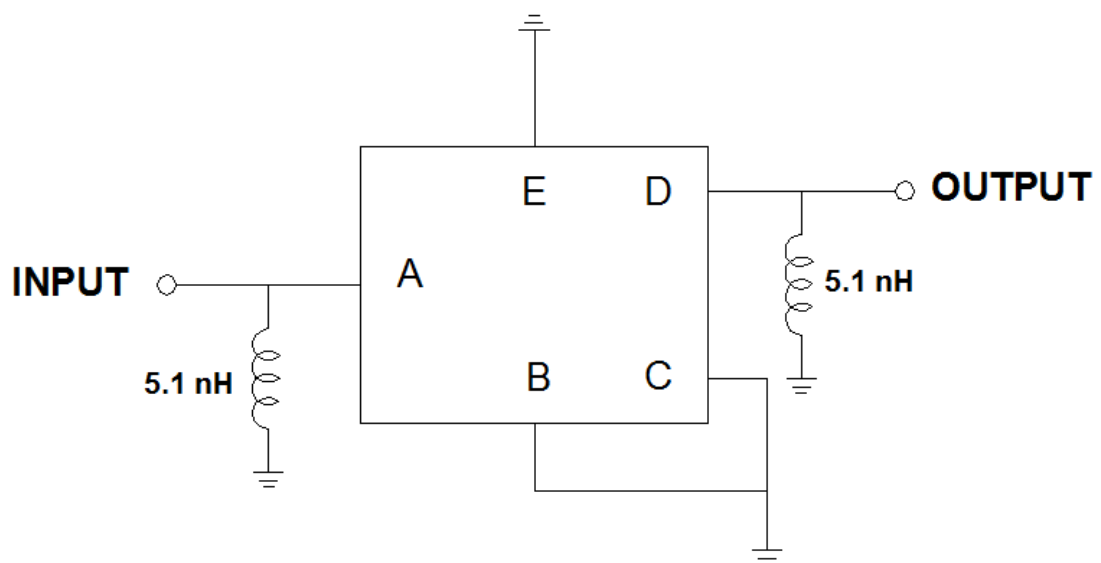
## □ Package Dimensions



Marking Descriptions	
(Q)	Series Number
X	Date Code(Year+Month)

Pin Description	
B,C,E	Ground
A	Input
D	Output

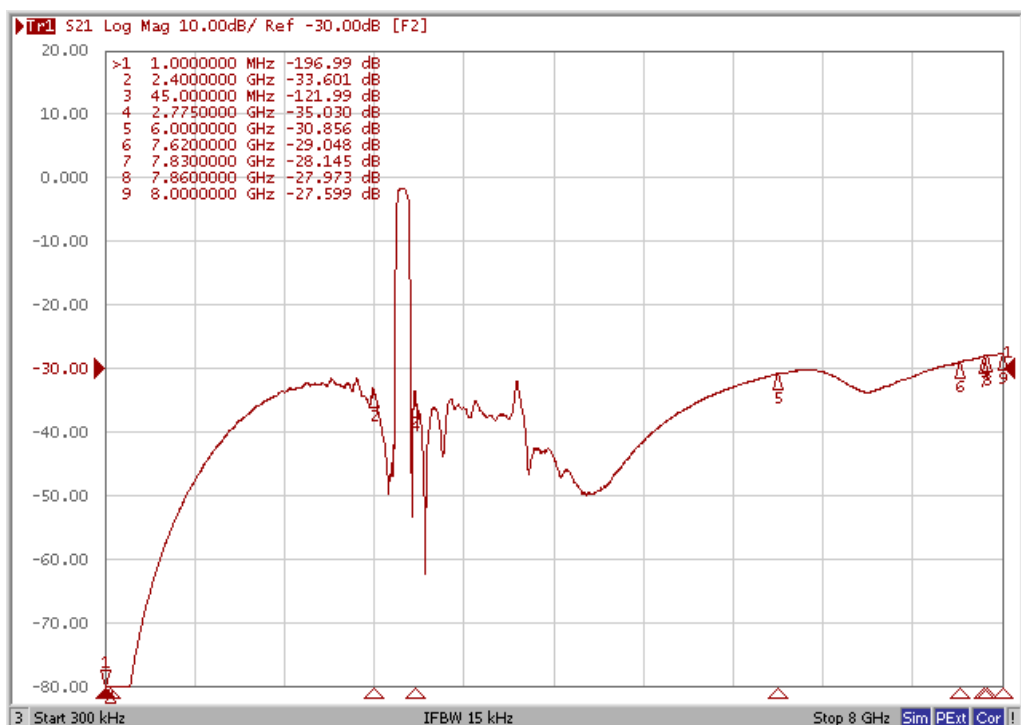
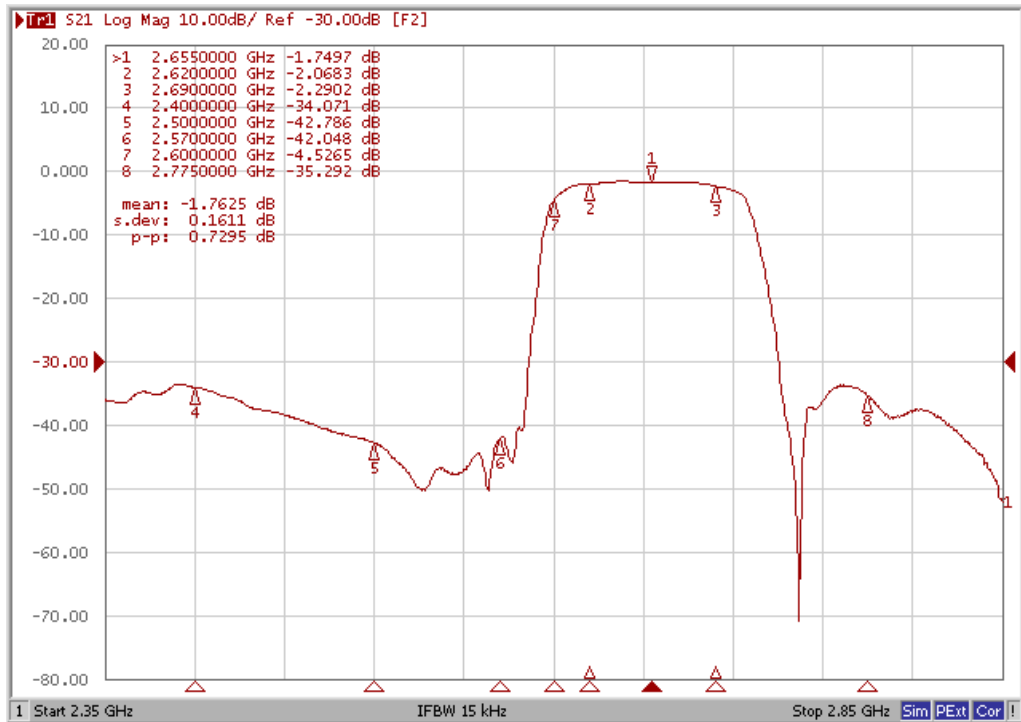
## □ Testing Environment



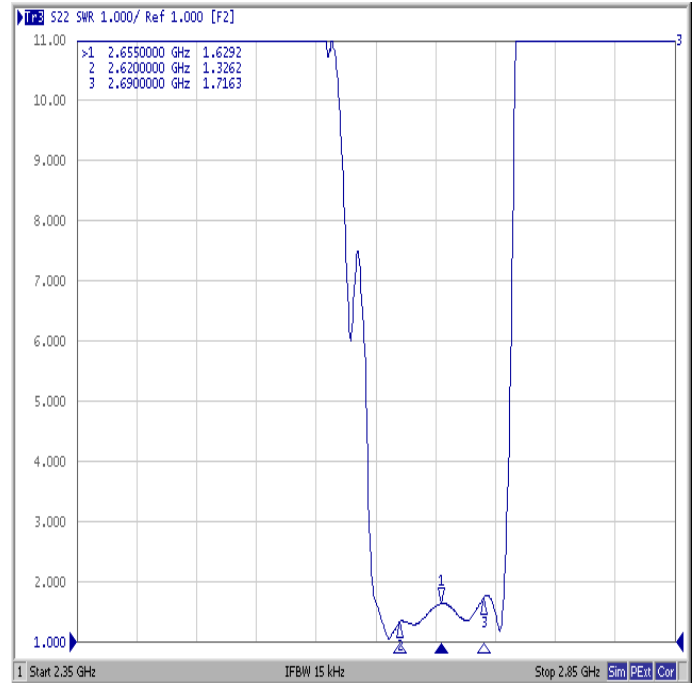
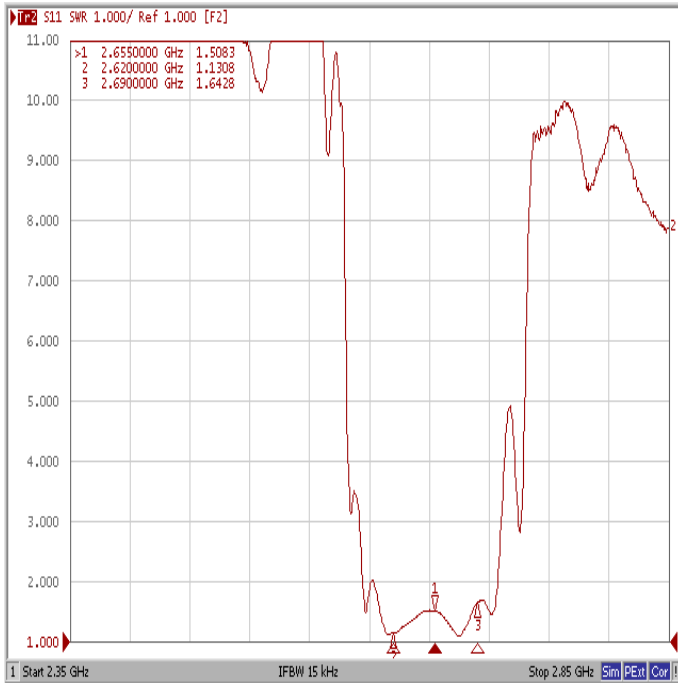
Source & Load Impedance: 50 Ω

## □ Frequency Characteristics

### Frequency Response



### VSWR



### Smith Chart

