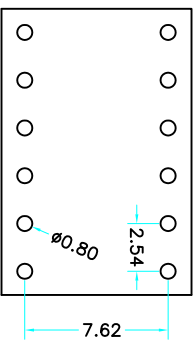
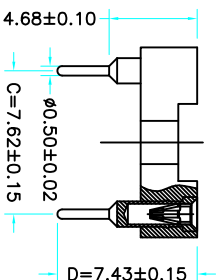
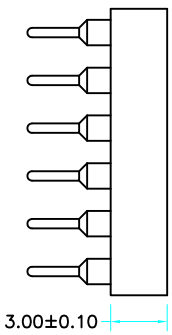
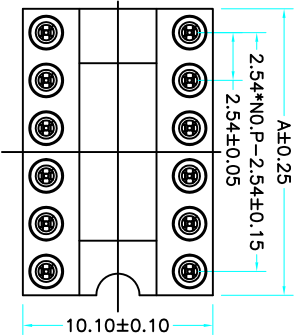


Poles Dimensions(mm)

| Poles | Dimensions(mm) |
|-------|----------------|
| 2*02  | 5.08           |
| 2*03  | 7.62           |
| 2*04  | 10.16          |
| 2*05  | 12.70          |
| 2*06  | 15.24          |
| 2*07  | 17.78          |
| 2*08  | 20.32          |
| 2*09  | 22.86          |
| 2*10  | 25.40          |
| 2*12  | 30.48          |
| 2*14  | 35.56          |
| 2*16  | 40.64          |
| 2*20  | 50.80          |
| 2*21  | 53.34          |
| 2*24  | 60.96          |
| 2*25  | 63.50          |



Recommended P.C.B  
Layout (±0.05)

**Technical Data**  
 Pin(outer sleeve):Brass,machined CuZn38Pb2  
 Clip(Contact 4 Finger):Beryllium copper,heat treated  
 Insulator:PBT UL94V-0 colour:black  
 Tin Plated:2um/80u"Ni,5um/200u"Sn  
 Gold Plated:2um"/80u"Ni,GF  
 Current rating:3Amps  
 Contact resistance:max 10m Ω  
 Dielectric strength:min 1000V RMS  
 Operating temperature:-40° C to+105° C

X5621 F V-2\*XX-C762 D7430

- ① ② ③ ④ ⑤ ⑥

- ① Series: NO.
- ② Category : F-Female
- ③ Welding Board Angle : V-Straight 180°
- ④ Row No-Pin No:2\*XX-03,04,05,06,07,08,09,10,12,14,16, 20,21,24,25
- ⑤ Plastic Height :C=7.62mm
- ⑥ Pin Length :D:7430=7.43mm;0420=4.2mm;0740=7.40mm; 1390=13.9mm;92=9.20mm;1020=10.20mm;1120=11.20mm; 1150=11.50mm;1170=11.70;1220=12.20mm;1340=13.40mm 1370=13.70mm;1420=14.20mm;1520=15.20mm;1620-16.20mm 1780=17.80mm;1820=18.20mm

|                        |           |                    |                  |                           |
|------------------------|-----------|--------------------|------------------|---------------------------|
| X5621FV-2*XX-C762D7430 | PBT 94V-0 | Brass              | Tin Gold 1u"     | X5621F                    |
| PART NO                | Material  | Material(Terminal) | Finish(Terminal) | Mates With XKB Pin Header |

| MARK | DESCRIPTION | REVISIONS | DATE | REVISED | APPROVED | UNSPECIFIED TOLERANCES | DSND | DATE | SCALE: N/A | MODEL TYPE:            |
|------|-------------|-----------|------|---------|----------|------------------------|------|------|------------|------------------------|
| ΔX   |             |           |      |         |          | ANGULAR                | ±5°  |      |            |                        |
| ΔX   |             |           |      |         |          | L ≤ 4                  | ±0.2 | DWN  | VIEW: ④    | PART NO.:              |
| ΔX   |             |           |      |         |          | 4<L ≤ 16               | ±0.3 | CHKD | UNIT: mm   | DWG NO.:               |
| ΔX   |             |           |      |         |          | 16<L ≤ 63              | ±0.4 | APPD | SIZE: A4   | X5621FV-2*XX-C762D7430 |
|      |             |           |      |         |          | L > 63                 | ±0.5 |      |            | WEIGHT                 |
|      |             |           |      |         |          |                        |      |      |            | 1.0g                   |
|      |             |           |      |         |          |                        |      |      |            | SHEET                  |
|      |             |           |      |         |          |                        |      |      |            | 1/1                    |
|      |             |           |      |         |          |                        |      |      |            | REVISION               |
|      |             |           |      |         |          |                        |      |      |            | A0                     |

www.xk-dg.cn www.hellokcb.com www.hellokcb.cn

XKB INDUSTRIAL PRECISION CO., LIMITED