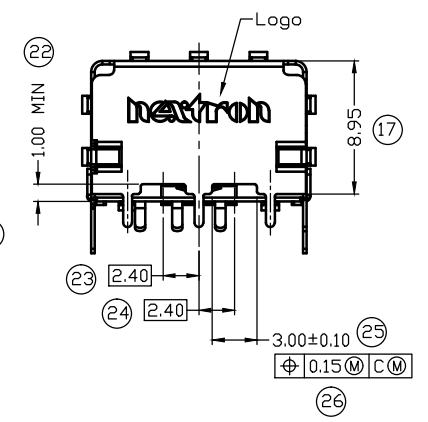
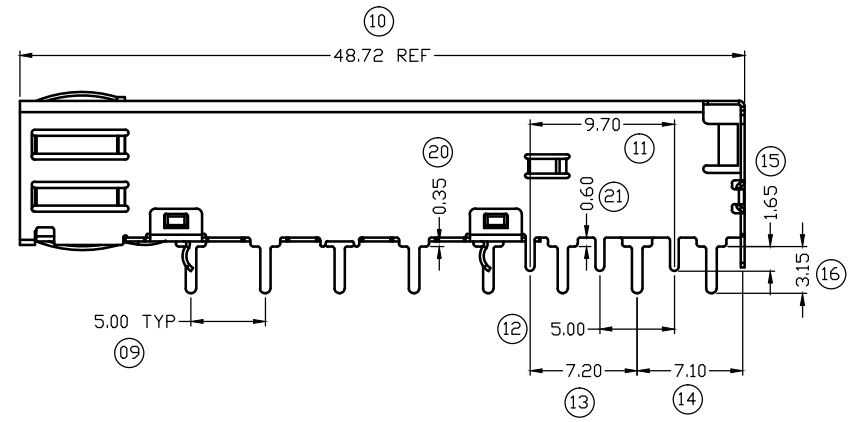
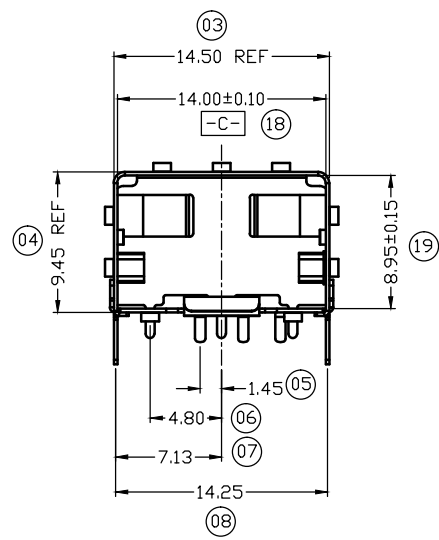
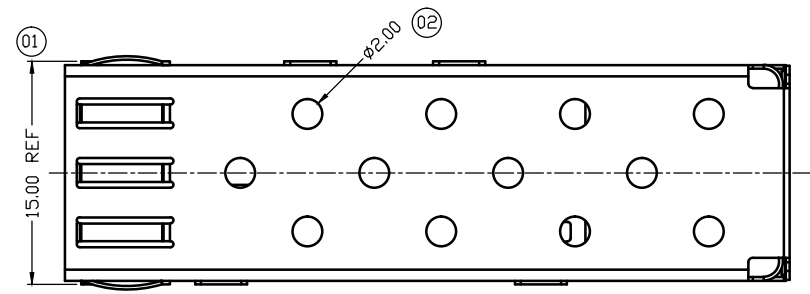


- NOTE:
- MATERIAL:
CAGE ASSEMBLY: COPPER ALLOY.
 - FINISH:
CAGE ASSEMBLY: NICKEL PLATED.
 - MATES WITH SFP MSA COMPLIANT TRANSCEIVERS.
 - MINIMUM PC BOARD THICKNESS:
SINGLE SIDED = 1.50mm
 - THIS PART MEETS THE RESTRICTION OF
HAZARDOUS SUBSTANCES IN ELECTRICAL
AND ELECTRONIC EQUIPMENT (ROHS) DIRECTIVE
(2011/65/EU).



PART NUMBER:
Z - 8 2 8 1 1 0 0 0 0 0 0 *

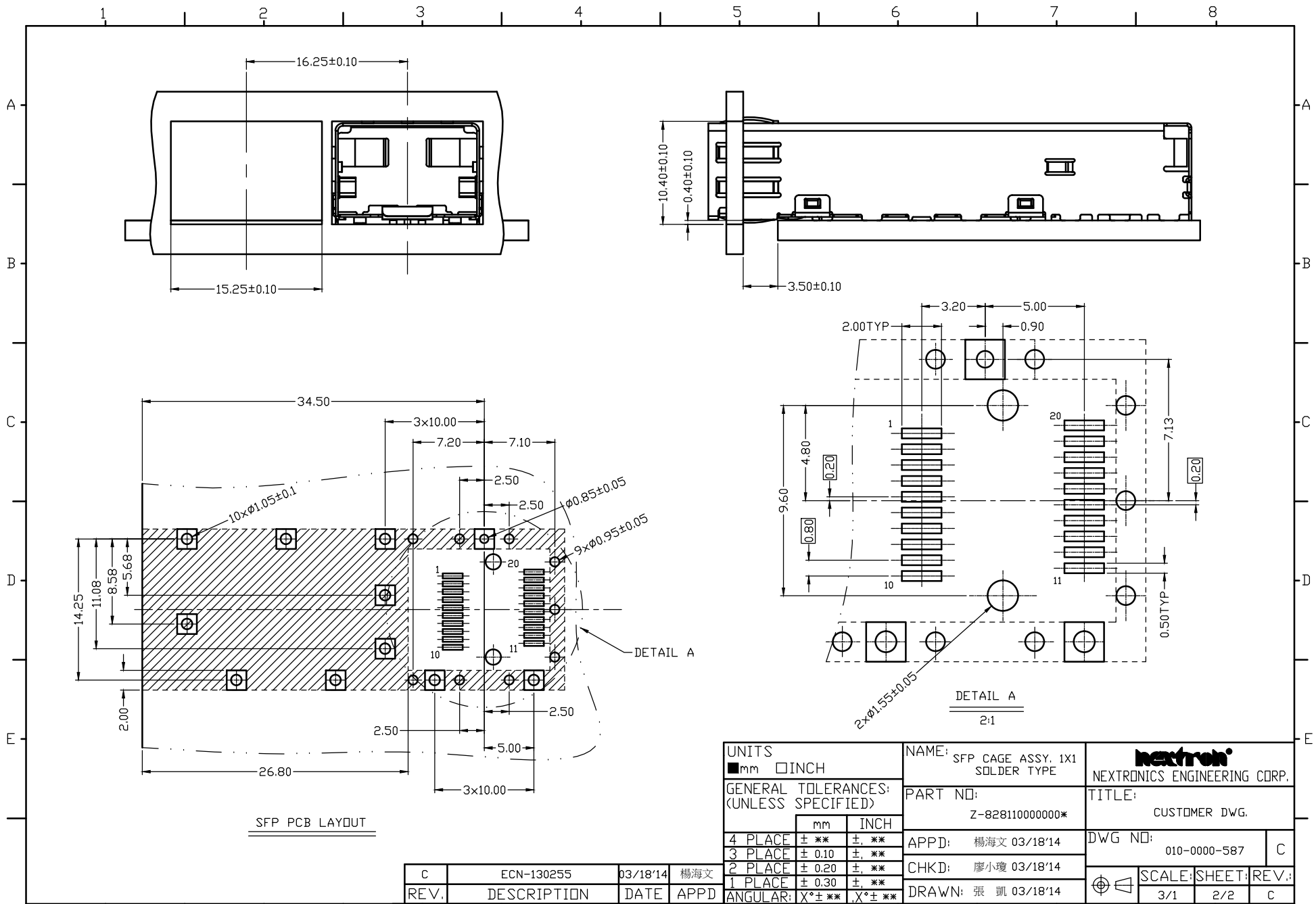
PRODUCT LOGO TYPE:
0=WITH NEXTRON LOGO
1=WITHOUT LOGO

UNITS	
<input checked="" type="checkbox"/> mm	<input type="checkbox"/> INCH
GENERAL TOLERANCES: (UNLESS SPECIFIED)	
4 PLACE	± **. **
3 PLACE	± 0.10
2 PLACE	± 0.20
1 PLACE	± 0.30
ANGULAR:	X° ± **. **

NAME:	SFP CAGE ASSY. 1X1 SOLDER TYPE
PART NO:	Z-828110000000*
APPD:	楊海文 03/18'14
CHKD:	廖小瓊 03/18'14
DRAWN:	張凱 03/18'14

 NEXTRONICS ENGINEERING CORP.	
TITLE: CUSTOMER DWG.	
DWG NO:	010-0000-587
SCALE:	3/1
SHEET:	1/2
REV.:	C

C	ECN-130255	03/18'14	楊海文
REV.	DESCRIPTION	DATE	APPD



SFP PCB LAYOUT

UNITS <input checked="" type="checkbox"/> mm <input type="checkbox"/> INCH		NAME: SFP CAGE ASSY. 1X1 SOLDER TYPE		 NEXTRONICS ENGINEERING CORP.	
GENERAL TOLERANCES: (UNLESS SPECIFIED)		PART NO: Z-828110000000*		TITLE: CUSTOMER DWG.	
	mm	INCH	APPD: 楊海文 03/18'14		DWG NO: 010-0000-587
4 PLACE	± **.05	± **.002	CHKD: 廖小瓊 03/18'14		C
3 PLACE	± 0.10	± **.004	DRAWN: 張凱 03/18'14		
2 PLACE	± 0.20	± **.008	SCALE:		SHEET: 2/2
1 PLACE	± 0.30	± **.012	REV: C		
ANGULAR:	X*± **.05	X*± **.002			

C	ECN-130255	03/18'14	楊海文
REV.	DESCRIPTION	DATE	APPD