

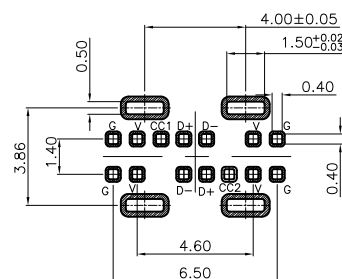
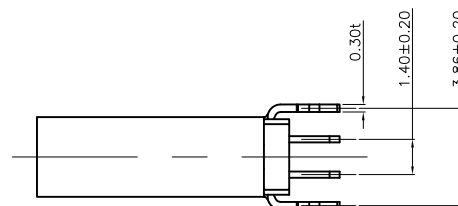
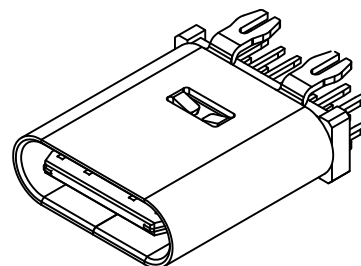
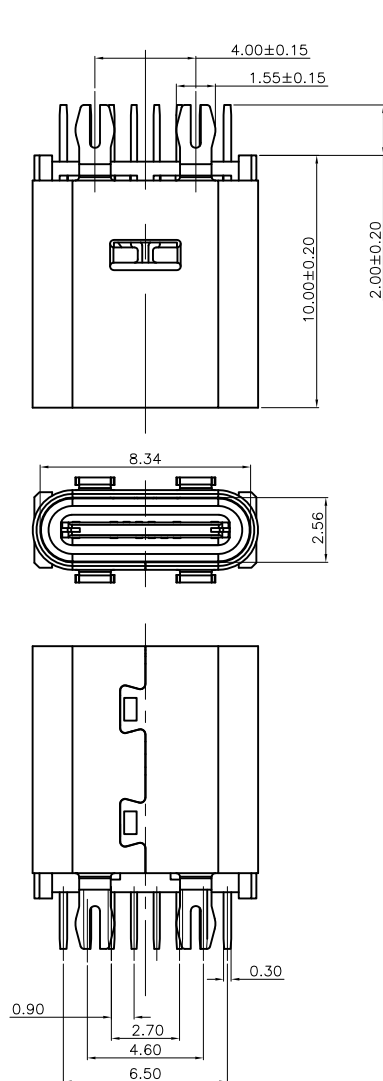
RoHS

MAPX

MODIFICATION

DRW

DATE



- MATERIAL:
MOLDING: LCP UL94 V-0
CONTACT: COPPER ALLOY.
GOLD PLATED ON CONTACT AREA, $100\mu''$
Min TIN (LEAD FREE) ON SOLDER AREA,
SHELL: SUS304-H, $T=0.30 \pm 0.03$ mm
 $50\mu''$ NICKEL PLATING OVER ALL.
SHILD: SUS304-H, $T=0.12 \pm 0.03$ mm
- MECHANICAL:
INSERTION: 5~20N.
EXTRACTION: 8~20N.
DURABILITY: 5000 CYCLES
- ELECTRICAL:
CURRENT: 3A MIN FOR VBUS;

VOLTAGE: 5VAC MAX
WITHSTANDING VOLTAGE: 100V AC.
CONTACT RESISTANCE: 40m Ω MAX.
INSULATION RESISTANCE: 100M Ω MIN.
- ENVIRONMENTAL
TEMPERATURE RANGE $-55^{\circ}\text{C} \sim +85^{\circ}\text{C}$

产品图

PRODUCT CHART DWG

公差一览表

TOLERANCE UNLESS OTHERWISE			
X.	± 0.35	X.	$\pm 5^{\circ}$
.X	± 0.20	.XX	$\pm 2^{\circ}$
.XX	± 0.10	.XXX	$\pm 1^{\circ}$
.XXX	± 0.05		$\pm 0.5^{\circ}$

深圳市精拓金电子有限公司
Shenzhen Jing Tuo Jin Electronics Co., Ltd.

单位 UNITS	MM	制图 DRAWING	Z-Y-B	制图料号 PRODUCT PART NO.	918-418K2022Y40000
比例 SCALE	1:1	审核 CHKD	郭治富	产品名称 PRODUCT NO.	TYPE-C3.1母座立式10.0四鱼叉脚不锈钢 外壳LCP黑胶 14PIN
日期 DATE	2016-09-09	核准 APPD	黄国荣	角法 VIEW	版本 VER

AO