

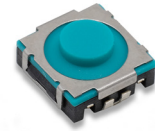
# TPLS Series Soft Sound Tact Switch

## Features/Benefits

- New soft sound
- Soft actuator
- IP54
- Long life
- J terminations
- Tape & reel

## Typical Applications

- Automotive interior controls
- Automatic gear shift paddle
- Steering wheel
- Window lifter
- Seat adjustment module



ROCPU

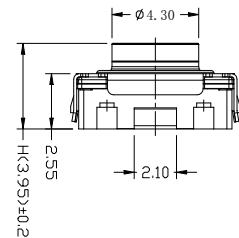
Type	Force (N)	Tactile Feeling (%)	Travel (mm)	Life (cycles)
TPLS 004 J LFS	4 ± 0.8	50 ± 15	0.9 ± 0.3	500,000
TPLS 007 J LFS	7 ± 1.5			500,000
TPLS 010 J LFS	10 ± 2			300,000

POWER: 10μ VA min. / 0.8 VA max.

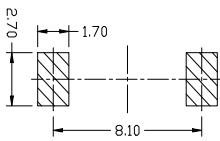
VOLTAGE: DC 1V min. / 16 V max.

CURRENT: 10μA min. / 50 mA max.

OPERATING TEMPERATURE: -40°C / +90°C

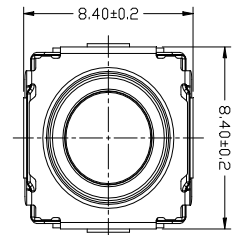
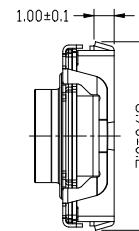
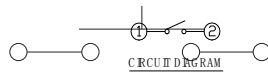


### PCB LAYOUT



P.C.B L A N D D I M E N S I O N

### CIRCUIT DIAGRAM



## Packaging

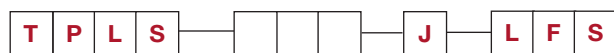
Switches in reels of 900 pieces.

Dimensions of reels according to EIA 481B. External diameter 330 mm.

## How To Order

Our easy build-a-switch concept allows you to mix and match options to create the switch you need. To order, select desired option from each category and place it in the appropriate box.

For any part number different from those listed above, please consult your local representative.



Operating Force

- 004 4 N
- 007 7 N
- 010 10 N

Termination  
J J bending

LFS Lead free compatible, silver plated



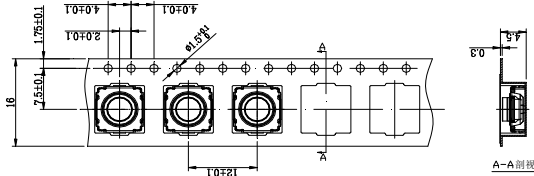
Dimensions are shown:mm

Specifications and dimensions subject to change



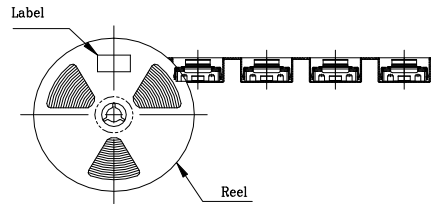
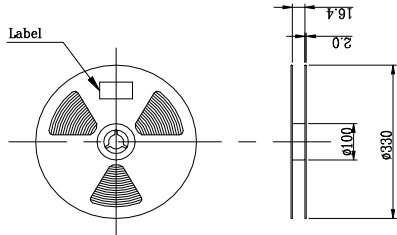
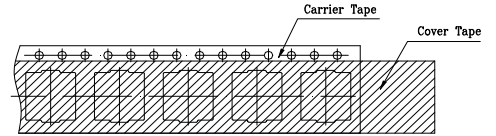
# TPLS Series Soft Sound Tact Switch

\* THE DIMENSION OF CARRIER TAPE, COVER TAPE AND REEL \*

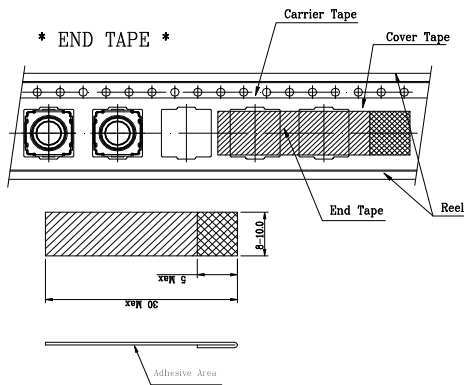


MODEL NAME	CODE NO.
TVPFU13	

\* THE SPECIFICATION FOR PACKAGING \*



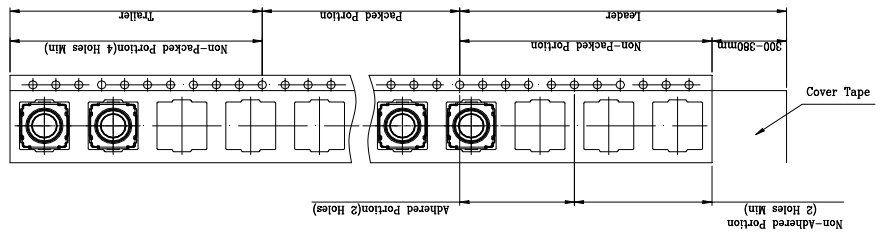
\* END TAPE \*



End

\* THE SPECIFICATION FOR PACKAGING \*

Start



- NOTE
- 1K pcs SWITCHES PER 1 REEL
  - GENERAL TOLERANCE : 0.2mm

REFERENCE DRAWING