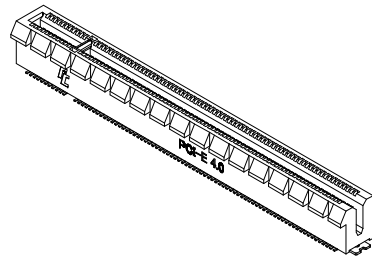
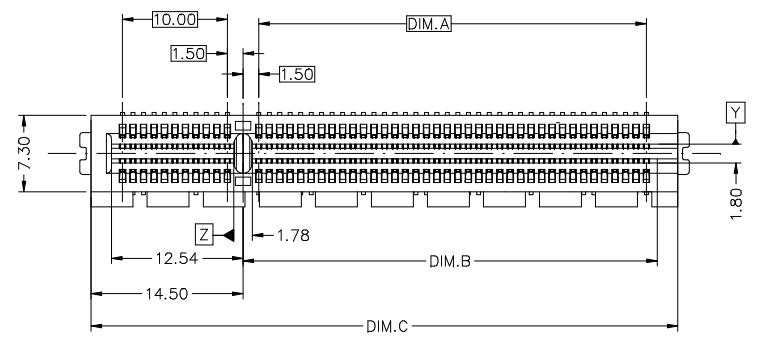
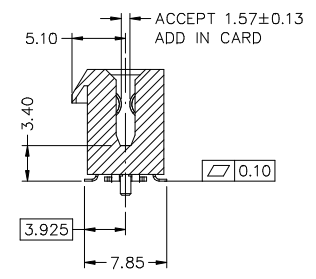
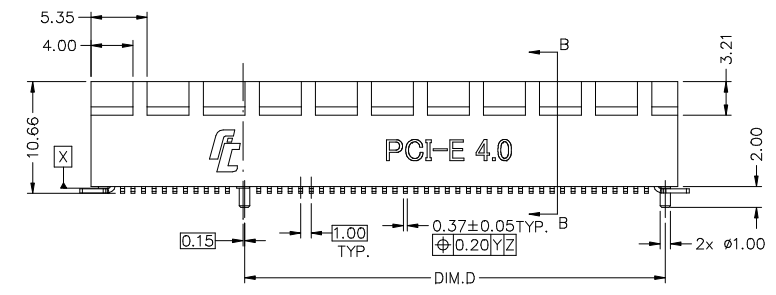


|      |          |         |
|------|----------|---------|
| REV. | ECN. NO. | APPD.   |
| X1   | 08/11'18 | Davy Bu |
| X2   | 06/27'19 | Davy Bu |



NOTES:

- ELECTRICAL CHARACTERISTICS:
  - 1-1 CURRENT RATING: 1.1 A PER PIN, 30°C RISE ABOVE AMBIENT.
  - 1-2 CONTACT RESISTANCE: 30 MILLIOHMS MAX. INITIAL, 50 MILLIOHMS MAX. AFTER TEST.
  - 1-3 INSULATION RESISTANCE: 1000 MEGOHMS MIN..
  - 1-4 DIELECTRICAL WITHSTAND VOLTAGE: 500 V AC MIN. AT SEA LEVEL.
- MECHANICAL CHARACTERISTICS:
  - 2-1 CONTACT INSERTION FORCE: 1.15 N MAX. PER CONTACT PAIR.
  - 2-2 CONTACT REMOVAL FORCE: 0.15 N MIN. PER CONTACT PAIR.
  - 2-3 DURABILITY: 50 MATING AND UNMATING CYCLES.
  - 2-4 CONTACT RETENTION FORCE: 3.43 N MIN.
- ENVIRONMENTAL CHARACTERISTICS:
  - 3-1 OPERATING TEMPERATURE RANGE: -40°C TO +105°C .
- RECOMMENDED PROCESS: IR REFLOW 245°C, 3~5 s
- PLEASE CONTACT FOXCONN SALES REPRESENTATIVE TO VERIFY PRODUCTION DETAILS & AVAILABILITY



PROD. NO.: 2EF 5 \*\* \* - DA9DB - \* \*

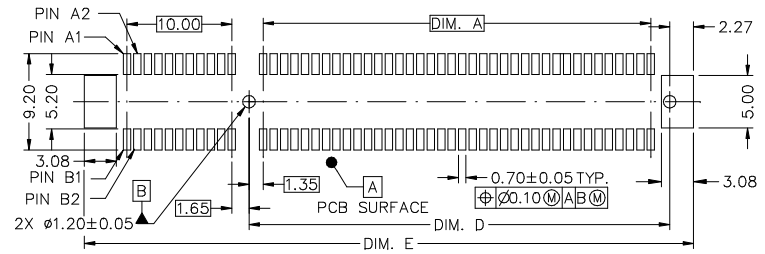
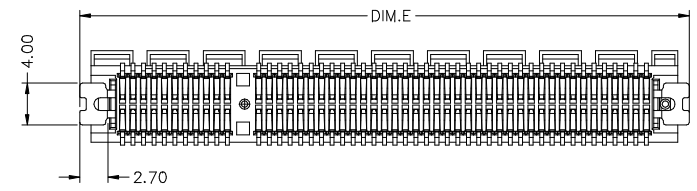
FIELD PRODUCT SERIES:  
2EF= PCI-E GEN 4.0

TERMINAL TYPE:  
5= SMT TYPE  
NO. OF POS.  
18= 36 POSITIONS  
32= 64 POSITIONS  
49= 98 POSITIONS

GREEN CODE:  
F: LEAD FREE  
RoHS 2.0 COMPLIANT  
H: HALOGEN & LEAD FREE  
RoHS 2.0 COMPLIANT

PACKAGE CODE:  
5: TRAY WITH MYLAR  
7: T/R  
8: MYLAR + T/R

EXTENSION CODE  
CONTACT AREA GOLD PLATING:  
1= GOLD FLASH  
7= 15u" GOLD  
3= 30u" GOLD



RECOMMENDED PCB LAYOUT

|      |             |                           |   |
|------|-------------|---------------------------|---|
| 3    | CONTACT     | COPPY ALLOY               | 50u" NICKEL PLATING OVERALL UNDERPLATED.<br>100u" MATTE TIN PLATING OVER NICKEL AT TAIL.<br>GOLD PLATING ON CONTACT AREA. |
| 2    | PAD         | COPPY ALLOY               | 50u" NICKEL PLATING OVERALL UNDERPLATED.<br>100u" MATTE TIN PLATING OVER NICKEL AT TAIL.                                  |
| 1    | HOUSING     | THERMOPLASTIC<br>UL 94V-0 | MOLDED BLACK  |
| ITEM | DESCRIPTION | MATERIAL                  | TREATMENT   |

|           |         |        |                            |   |
|-----------|---------|--------|----------------------------|---|
| X.±       | X.*±    | UNITS  | NAME<INTENDED USE>         | FOXCONN INTERCONNECT TECHNOLOGY LIMITED.  |
|           |         | mm     | SMT TYPE<br>PCI-E Gen4.0   |   |
| .X± 0.38  | .X.*±   | MAT'L  | PART NO.<INTENDED USE>     | CLASS:<br><input type="checkbox"/> CONFIDENTIAL <input type="checkbox"/> SECRET <input checked="" type="checkbox"/> GENERAL |
| .XX± 0.25 | .XX.*±  | N/A    | 2EF5***-DA9DB-**           |   |
| .XXX±     | .XXX.*± | FINISH | APPD:                      | TITLE: CUSTOMER DRAWING   |
|           |         | N/A    | Davy Bu 06/27'19           | DWG NO.: 303-0000-****  |
|           |         | Q'TY   | CHKD: Johnny Tang 06/27'19 | SCALE SHEET REV.  |
|           |         | N/A    | DRAW: Qin Teng 06/27'19    | N/A 1/4 X2  |

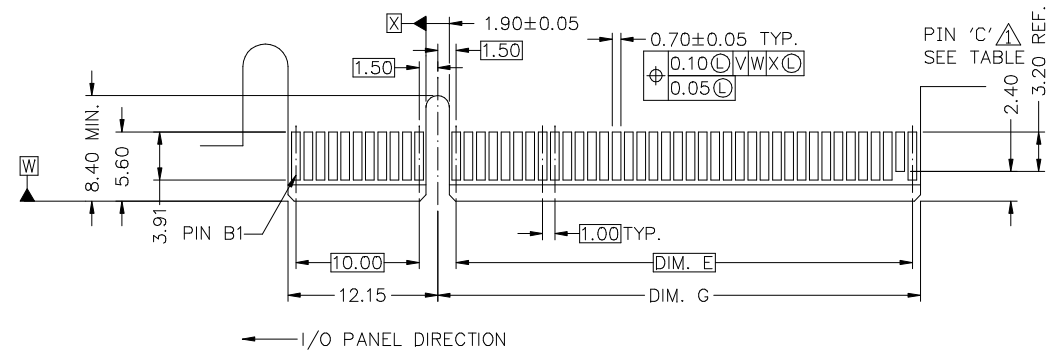
THESE DRAWINGS AND SPECIFICATIONS ARE THE PROPERTY OF FOXCONN INTERCONNECT TECHNOLOGY LIMITED AND SHALL NOT BE REPRODUCED, COPIED OR USED IN ANY MANNER WITHOUT THE PRIOR WRITTEN CONSENT OF FOXCONN INTERCONNECT TECHNOLOGY LIMITED.

|                  |        |        |        |        |        |
|------------------|--------|--------|--------|--------|--------|
| 2EF549*-DA9DB-** | 37.00  | 39.54  | 56.00  | 40.15  | 58.15  |
| 2EF532*-DA9DB-** | 20.00  | 22.54  | 39.00  | 23.15  | 41.15  |
| 2EF518*-DA9DB-** | 6.00   | 8.54   | 25.00  | 9.15   | 27.15  |
| PART NUMBER      | DIM. A | DIM. B | DIM. C | DIM. D | DIM. E |

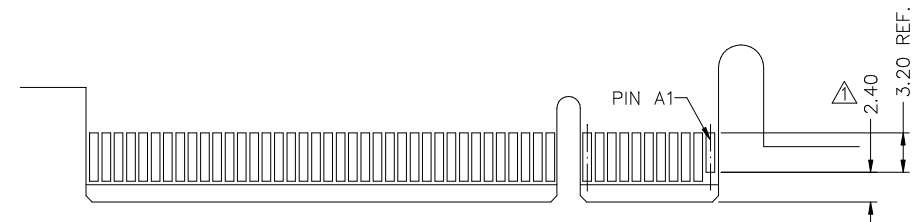
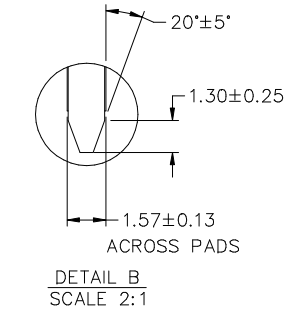
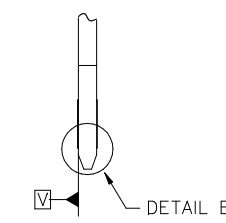
TO BE DEVELOPED

|      |          |       |
|------|----------|-------|
| REV. | ECN. NO. | APPD. |
|      |          |       |

A  
B  
C  
D  
E



PRIMARY (COMPONENT) SIDE




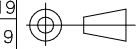
SECONDARY (SOLDER) SIDE

ADD-IN CARD EDGE-FINGER DIMENSIONS

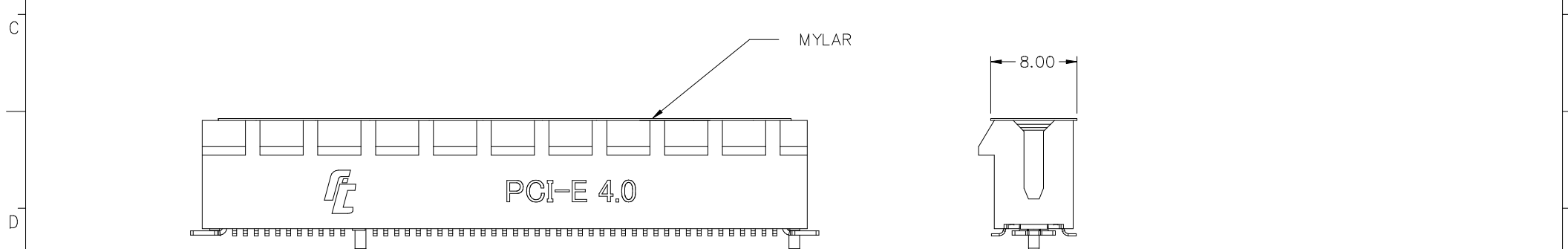
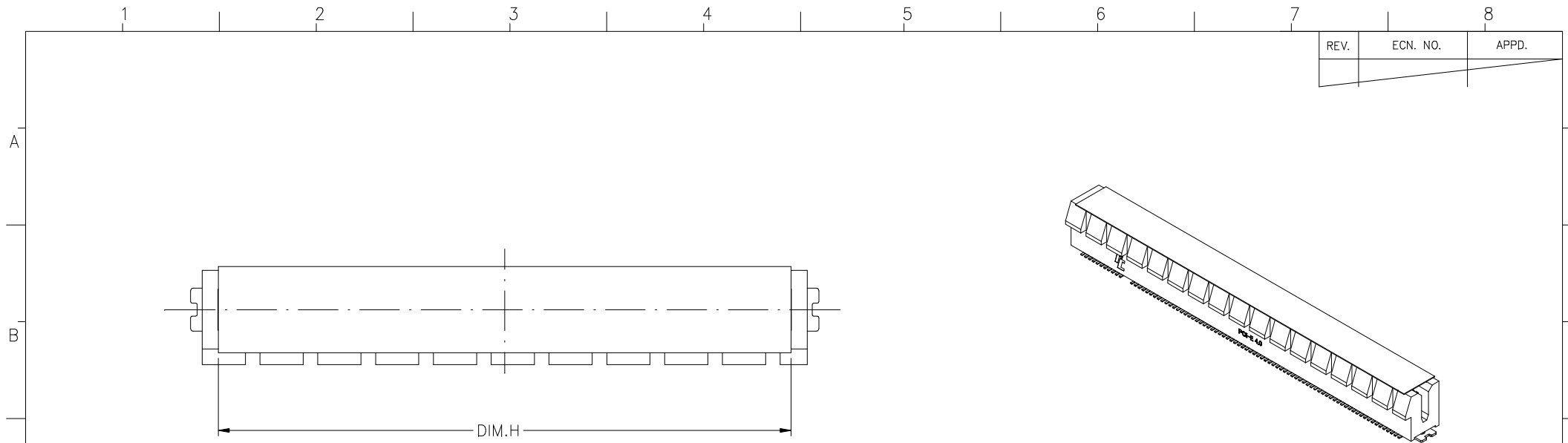
| CONNECTOR LINK WIDTH | # POS REF | DIM. E | DIM. G | 'C' |
|----------------------|-----------|--------|--------|-----|
| X1                   | 36        | 6.00   | 8.15   | B17 |
| X4                   | 64        | 20.00  | 22.15  | B31 |
| X8                   | 98        | 37.00  | 39.15  | B48 |

NOTES:


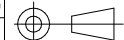
- ① NO TIE PERMITTED FROM CARD EDGE TO LEADING EDGE OF PAD FOR PINS A1 AND 'C'.
- ② CHAMFER EDGES MUST BE FREE OF CUTTING BURRS.

|  |         |               |   |   |
|--|---------|---------------|---|---|
| X.±  | X.*±    | UNITS<br>mm   | NAME<INTENDED USE><br>SMT TYPE<br>PCI-E Gen4.0  |  <b>FOXCONN INTERCONNECT TECHNOLOGY LIMITED.</b> |
| .X± 0.1  | .X*± 2° | MAT'L<br>N/A  | PART NO.<INTENDED USE><br>2EF5***-DA9DB-**  |   |
| .XX± 0.05  | .XX*±   | FINISH<br>N/A | APPD:<br>Davy Bu 06/27'19   | TITLE: CUSTOMER DRAWING   |
| .XXX±  | .XXX*±  | Q'TY<br>N/A   | CHKD: Johnny Tang 06/27'19<br>DRAW: Qin Teng 06/27'19                                 | DWG NO.: 303-0000-****  |
| <small>THESE DRAWINGS AND SPECIFICATIONS ARE THE PROPERTY OF FOXCONN INTERCONNECT TECHNOLOGY LIMITED AND SHALL NOT BE REPRODUCED, COPIED OR USED IN ANY MANNER WITHOUT THE PRIOR WRITTEN CONSENT OF FOXCONN INTERCONNECT TECHNOLOGY LIMITED.</small> |         |               |  | SCALE SHEET REV.<br>N/A 2/4 X2  |

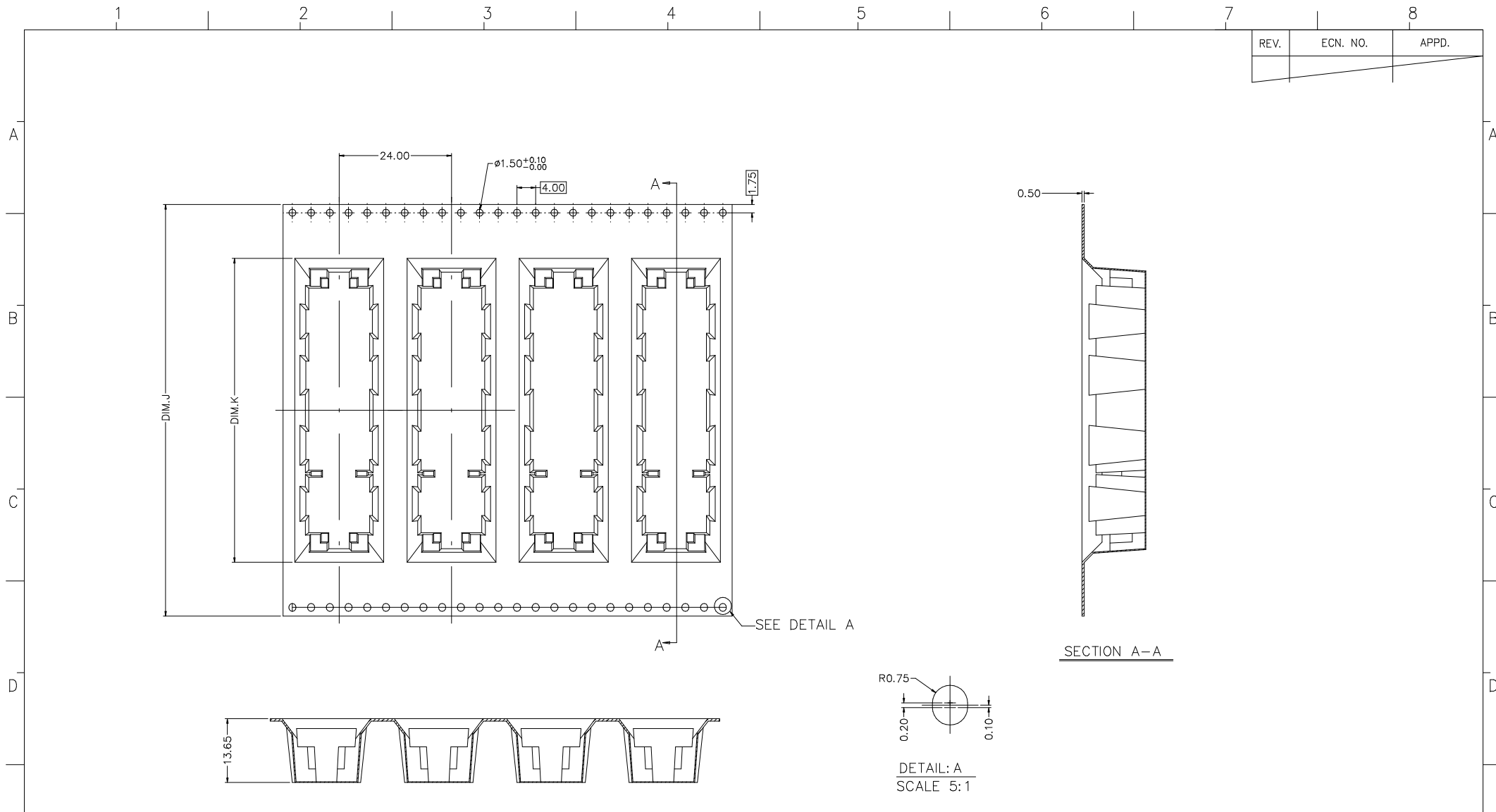
|      |          |       |
|------|----------|-------|
| REV. | ECN. NO. | APPD. |
|      |          |       |




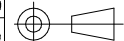
|                  |        |
|------------------|--------|
| 2EF549*-DA9DB-** | 53     |
| 2EF532*-DA9DB-** | 36     |
| 2EF518*-DA9DB-** | 22     |
| PART NUMBER      | DIM. H |

|  |        |               |  |   |                         |       |
|--|--------|---------------|--|---|-------------------------|-------|
| X.±  | X.*±   | UNITS<br>mm   | NAME<INTENDED USE><br>SMT TYPE<br>PCI-E Gen4.0 |  <b>FIT</b><br>FOXCONN INTERCONNECT<br>TECHNOLOGY LIMITED.   |                         |       |
| .X±  | .X*±   | MAT'L<br>N/A  | PART NO.<INTENDED USE><br>2EF5***-DA9DB-**     |   |                         |       |
| .XX±   | .XX*±  | FINISH<br>N/A | APPD:<br>Davy Bu 06/27'19                      | CLASS:<br><input type="checkbox"/> CONFIDENTIAL <input type="checkbox"/> SECRET <input checked="" type="checkbox"/> GENERAL   |                         |       |
| .XXX±  | .XXX*± |               | Q'TY<br>N/A                                    | CHKD: Johnny Tang 06/27'19<br>DRAW: Qin Teng 06/27'19   | TITLE: CUSTOMER DRAWING |       |
| <small>THESE DRAWINGS AND SPECIFICATIONS ARE THE PROPERTY OF FOXCONN INTERCONNECT TECHNOLOGY LIMITED AND SHALL NOT BE REPRODUCED, COPIED OR USED IN ANY MANNER WITHOUT THE PRIOR WRITTEN CONSENT OF FOXCONN INTERCONNECT TECHNOLOGY LIMITED.</small> |        |               |  | DWG NO.: 303-0000-****  |                         |       |
|  |        |               |  |  <table border="1"> <tr> <td>SCALE</td> <td>SHEET</td> <td>REV.</td> </tr> <tr> <td>N/A</td> <td>3/4</td> <td>X2</td> </tr> </table> | SCALE                   | SHEET |
| SCALE  | SHEET  | REV.          |  |   |                         |       |
| N/A  | 3/4    | X2            |  |   |                         |       |

|      |          |       |
|------|----------|-------|
| REV. | ECN. NO. | APPD. |
|      |          |       |



|                  |        |        |
|------------------|--------|--------|
| 2EF549*-DA9DB-** | 88.00  | 65.0   |
| 2EF532*-DA9DB-** | 72.00  | 48.0   |
| 2EF518*-DA9DB-** | 44.00  | 32.0   |
| PART NUMBER      | DIM. J | DIM. K |

|  |        |               |   |   |   |       |      |     |     |    |
|--|--------|---------------|---|---|---|-------|------|-----|-----|----|
| X.±  | X.*±   | UNITS<br>mm   | NAME<INTENDED USE><br>SMT TYPE<br>PCI-E Gen4.0  |  FOXCONN INTERCONNECT<br>TECHNOLOGY LIMITED.   |   |       |      |     |     |    |
| .X± 0.38   | .X*±   | MAT'L<br>N/A  | PART NO.<INTENDED USE><br>2EF5***-DA9DB-**  |   | CLASS:<br><input type="checkbox"/> CONFIDENTIAL <input type="checkbox"/> SECRET <input checked="" type="checkbox"/> GENERAL |       |      |     |     |    |
| .XX± 0.25  | .XX*±  | FINISH<br>N/A | APPD:<br>Davy Bu 06/27'19   | TITLE: CUSTOMER DRAWING   |   |       |      |     |     |    |
| .XXX±  | .XXX*± | Q'TY<br>N/A   | CHKD: Johnny Tang 06/27'19<br>DRAW: Qin Teng 06/27'19                                 | DWG NO.: 303-0000-****  |   |       |      |     |     |    |
| <small>THESE DRAWINGS AND SPECIFICATIONS ARE THE PROPERTY OF FOXCONN INTERCONNECT TECHNOLOGY LIMITED AND SHALL NOT BE REPRODUCED, COPIED OR USED IN ANY MANNER WITHOUT THE PRIOR WRITTEN CONSENT OF FOXCONN INTERCONNECT TECHNOLOGY LIMITED.</small> |        |               |  | <table border="1"> <tr> <td>SCALE</td> <td>SHEET</td> <td>REV.</td> </tr> <tr> <td>N/A</td> <td>4/4</td> <td>X2</td> </tr> </table> | SCALE   | SHEET | REV. | N/A | 4/4 | X2 |
| SCALE  | SHEET  | REV.          |   |   |   |       |      |     |     |    |
| N/A  | 4/4    | X2            |   |   |   |       |      |     |     |    |