

REV	LOCATIONS	DESCRIPTION	DATE	REVISER	APPD
1	△	Size changes and add part No. in dimensions table	27/APR/21	KATE	JOHNNY

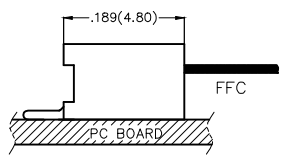
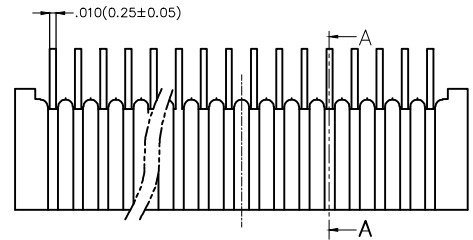
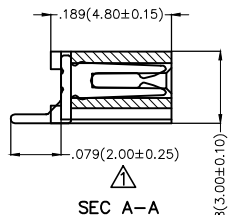
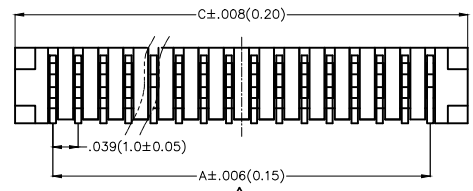
SPECIFICATIONS

Electrical

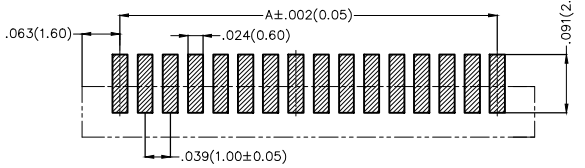
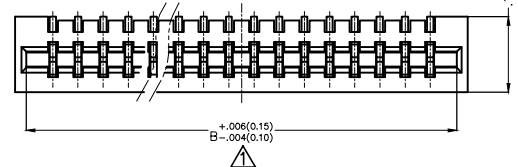
Current Rating: 0.5A AC(rms)/DC
Voltage Rating: 50V AC(rms)/DC
Contact Resistance: 20 mΩ Max
Insulation Resistance: 800 MΩ MIN
Withstanding Voltage: 500V AC/Minute
Operating Temperature: -20°C~+85°C

Material

Housing: PA9T (UL 94V-0)
Terminal: Phosphor Bronze/ Tin plated

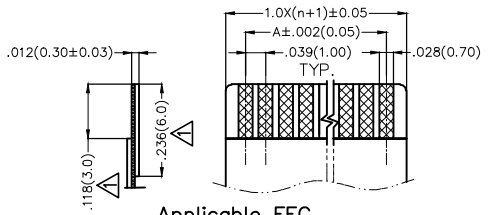


Assembl LAYOUT



Recommended P.C.Board Layout

Tolerances: ±0.02(0.05)




Applicable FFC Recommended Dimension

Ordering Information

FFC 100 28 - XX S B D 2 2 4 K6 M
1 2 3 4 5 6 7 8 9 10 11 12

1	Category FFC-FPC	2	Series Number 100-Pitch1.00mm	3	Distinction No. 28	4	Circuits XX	5	Assemble Layout S-SMT	6	Entry Angle B-90° Angle
7	Entry Type D-Double Contact	8	ZIF 2-NON ZIF	9	Plating 2-Tin Plated	10	Material-Resin 4-PA9T	11	Color-Resin K6-Black	12	Packaging M-Meel

Circuits (n)	Part No. △	Dimensions(in/mm)			Circuits (n)	Part No. △	Dimensions(in/mm)		
		A	B	C			A	B	C
4	FC10028-04SBD224K6M	.118(3.00)	.201(5.10)	.244(6.20)	16	FC10028-16SBD224K6M	.591(15.00)	.673(17.10)	.717(18.20)
5	FC10028-05SBD224K6M	.157(4.00)	.240(6.10)	.283(7.20)	17	FC10028-17SBD224K6M	.630(16.00)	.713(18.10)	.756(19.20)
6	FC10028-06SBD224K6M	.197(5.00)	.280(7.10)	.323(8.20)	18	FC10028-18SBD224K6M	.669(17.00)	.752(19.10)	.795(20.20)
7	FC10028-07SBD224K6M	.236(6.00)	.319(8.10)	.362(9.20)	19	FC10028-19SBD224K6M	.709(18.00)	.791(20.10)	.835(21.20)
8	FC10028-08SBD224K6M	.276(7.00)	.358(9.10)	.402(10.20)	20	FC10028-20SBD224K6M	.748(19.00)	.831(21.10)	.874(22.20)
9	FC10028-09SBD224K6M	.315(8.00)	.398(10.10)	.441(11.20)	21	FC10028-21SBD224K6M	.787(20.00)	.870(22.10)	.913(23.20)
10	FC10028-10SBD224K6M	.354(9.00)	.437(11.10)	.480(12.20)	22	FC10028-22SBD224K6M	.827(21.00)	.909(23.10)	.953(24.20)
11	FC10028-11SBD224K6M	.394(10.00)	.476(12.10)	.520(13.20)	24	FC10028-24SBD224K6M	.906(23.00)	.988(25.10)	1.031(26.20)
12	FC10028-12SBD224K6M	.433(11.00)	.516(13.10)	.559(14.20)	25	FC10028-25SBD224K6M	.945(24.00)	1.028(26.10)	1.071(27.20)
13	FC10028-13SBD224K6M	.472(12.00)	.555(14.10)	.598(15.20)	28	FC10028-28SBD224K6M	1.063(27.00)	1.146(29.10)	1.189(30.20)
14	FC10028-14SBD224K6M	.512(13.00)	.594(15.10)	.638(16.20)	30	FC10028-30SBD224K6M	1.142(29.00)	1.224(31.10)	1.268(32.20)
15	FC10028-15SBD224K6M	.551(14.00)	.634(16.10)	.677(17.20)	32	FC10028-32SBD224K6M	1.220(31.00)	1.303(33.10)	1.346(34.20)

THIRD ANGLE PROJECTION	GENERAL TOLERANCES (UNLESS SPECIFIED)		APPROVE BY FRANK	DATE 5/AUG/13	PART NO. FFC10028-XXSBD224K6M	ITEM NO. FFC10028	 Leader Of Industry
	X±.012(0.30)	X.±5'	CHECKED BY CHERRY	DATE 5/AUG/13			
DESIGN UNITS Inch (metric)	X.X±.008(0.20)	.X'±2'	DRAWN BY KEVIN	DATE 5/AUG/13	THIS DRAWING CONTAINS INFORMATION THAT IS PROPRIETARY TO TXGA INDUSTRIAL ELECTRONICS(S.Z)CO.,LTD AND SHOULD NOT BE USED WITHOUT WRITTEN PERMISSION		
SCALE 5:1	X.XX±.006(0.15)	.XX'±1'					
SIZE A4	X.XXX±.004(0.10)	.XXX'±0.5'					