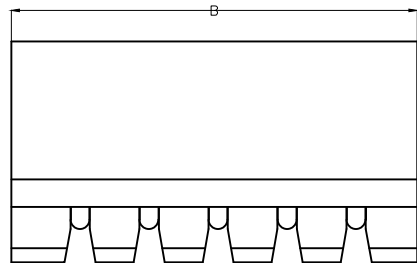
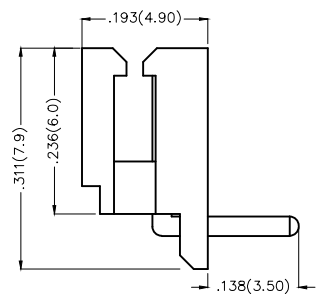


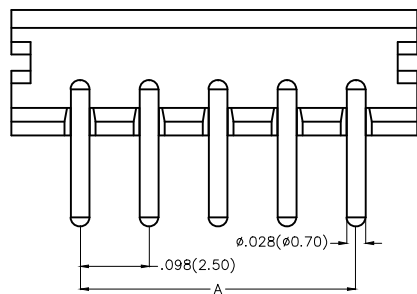
REV	LOCATIONS	DESCRIPTION	DATE	REVISER	APPD

Electrical

Current Rating: 3.0A AC(rms)/DC
Voltage Rating: 250V AC(rms)/DC
Contact Resistance: 20 mΩ Max
Insulation Resistance: 1000 MΩ MIN
Withstanding Voltage: 1000V AC r.m.s
Temperature Range-Operating: -25°C~+85°C
Material and Plating
Housing: PA66(UL 94V-2)
Contact Pin: Brass
Plating: Tin Plated



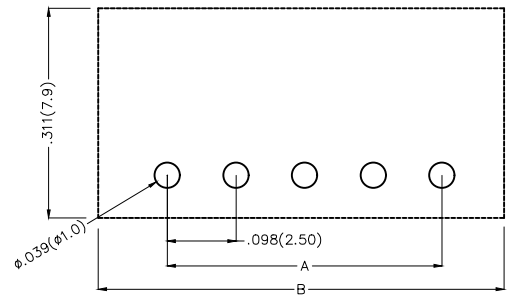
Circuits (n)	Part No.	Dimensions(in/mm)	
		A	B
2	FWF25004-S02B22W5B	.098(2.50)	.295(7.50)
3	FWF25004-S03B22W5B	.197(5.00)	.394(10.00)
4	FWF25004-S04B22W5B	.295(7.50)	.492(12.50)
5	FWF25004-S05B22W5B	.394(10.00)	.591(15.00)




Ordering Information

FWF 250 04 - S XX B 2 2 W5 B
1 2 3 4 5 6 7 8 9 10

1 Category FWF-Wafer	2 Series Number 250-Pitch2.5mm	3 Distinction No. 04	4 Row Option Single Row	5 Circuits XX	6 Entry Angle B-90° Angle
7 Plating 2-Tin Plated	8 Material-Resin 2-PA66	9 Color-Resin W5-White	10 Packaging B-PE Bag		



Recommended P.C.Board Layout

THIRD ANGLE PROJECTION	GENERAL TOLERANCES (UNLESS SPECIFIED)		APPROVE BY FRANK	DATE 01/JUL/13	PART NO. FWF25004-SXXB22W5B	ITEM NO. FWF25004	 Leader Of Industry
	DESIGN UNITS Inch (metric)	X.±.012(0.30) X.±5'	CHECKED BY JACOB	DATE 01/JUL/13	TITLE Wire to Board (Wafer) Pitch 2.5mm 90° Angled (DIP)		
SCALE 5:1	SIZE A4	X.XX±.006(0.15) .XX'±1'	DRAWN BY CHERRY	DATE 01/JUL/13	THIS DRAWING CONTAINS INFORMATION THAT IS PROPRIETARY TO TXGA INDUSTRIAL ELECTRONICS(S.Z)CO.,LTD AND SHOULD NOT BE USED WITHOUT WRITTEN PERMISSION		