

REV	LOCATIONS	DESCRIPTION	DATE	REVISED	APPD
1	△	Size change	17/JUL/19	KATE	CHERRY

Electrical

Current Rating: 10A AC(rms)/DC
Voltage Rating: 600V AC(rms)/DC
Contact Resistance: 10 mΩ Max
Insulation Resistance: 1000 MΩ MIN
Withstanding Voltage: 5000V AC r.m.s
Temperature Range—Operating: -25°C ~ +85°C

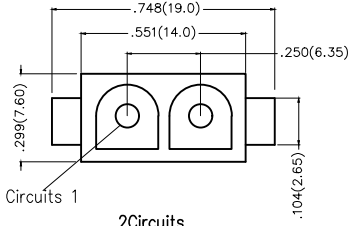
Material and Plating

Housing: PA66(UL 94V-0)
Contact Pin: Brass
Plating: Tin Plated

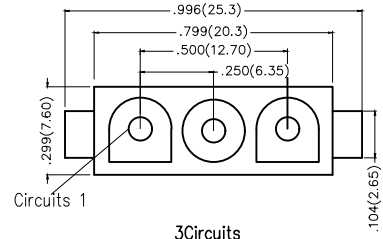
Circuits (n)	Part No.	Dimensions(in./mm)	
		A	
2	FWF63501-S02S22TB	.250(6.35)	
3	FWF63501-S03S22TB	.500(12.70)	
4	FWF63501-S04S22TB	.750(19.05)	
5	FWF63501-S05S22TB	1.00(25.40)	

1 2 3 4 5 6 7 8

A

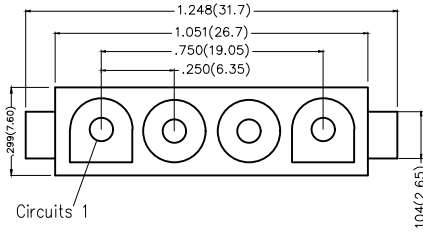


2Circuits

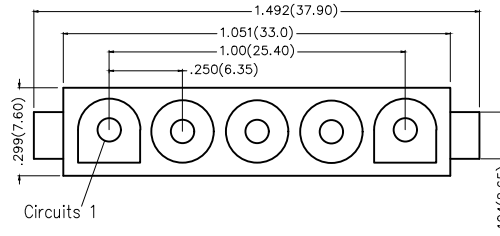


3Circuits

B

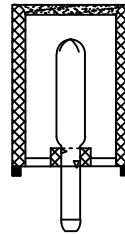
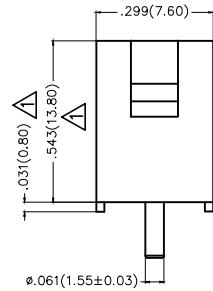
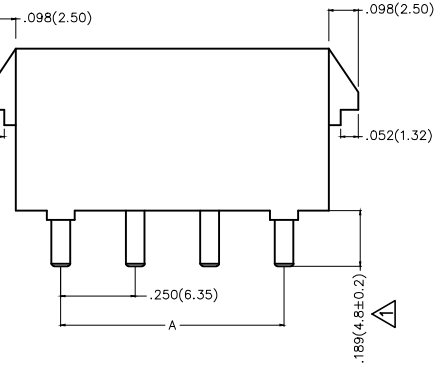


4Circuits



5Circuits

C



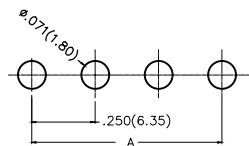
D

Ordering Information

FWF 635 01 - S XX S 2 2 T B
1 2 3 4 5 6 7 8 9 10


1 Category FWF-Wafer	2 Series Number 635-Pitch6.35mm	3 Distinction No. 01	4 Row Option Single Row	5 Circuits XX	6 Entry Angle S-180°Vertical
7 Plating 2-Tin Plated	8 Material-Resin 2-PA66	9 Color-Resin T-Transparent	10 Packaging B-PE Bag		

E



Recommended P.C.Board Layout

F

THIRD ANGLE PROJECTION		GENERAL TOLERANCES (UNLESS SPECIFIED)		APPROVE BY	DATE	PART NO.	ITEM NO.	 Leader Of Industry
		X.±.012(0.30)	X.±5'	FRANK	28/JUN/13	FWF63501-SXXS22TB	FWF63501	
DESIGN UNITS Inch (metric)		X.X±.008(0.20)	.X'±2'	CHECKED BY	DATE	TITLE		
SCALE	SIZE	X.XX±.006(0.15)	.XX'±1'	JACOB	28/JUN/13	Wire to Board (Wafer) Pitch 6.35mm 180° Vertical (DIP)		REV 1
5:1	A4	X.XXX±.004(0.10)	.XXX'±0.5'	DRAWN BY	DATE	THIS DRAWING CONTAINS INFORMATION THAT IS PROPRIETARY TO TXGA INDUSTRIAL ELECTRONICS(S.Z)CO.,LTD AND SHOULD NOT BE USED WITHOUT WRITTEN PERMISSION		SHEET NO. 1/1
				CHERRY	28/JUN/13			

1 2 3 4 5 6 7 8