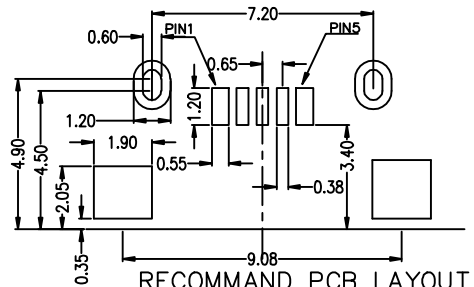
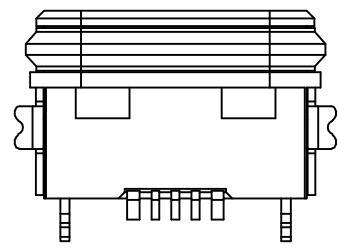
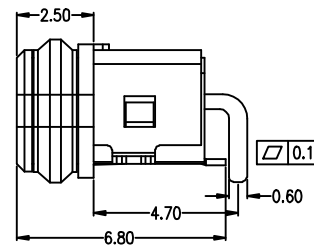
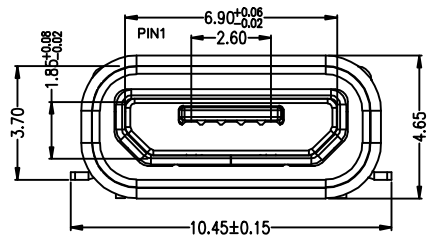
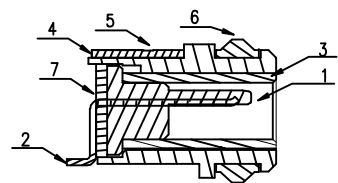
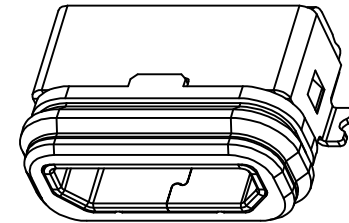
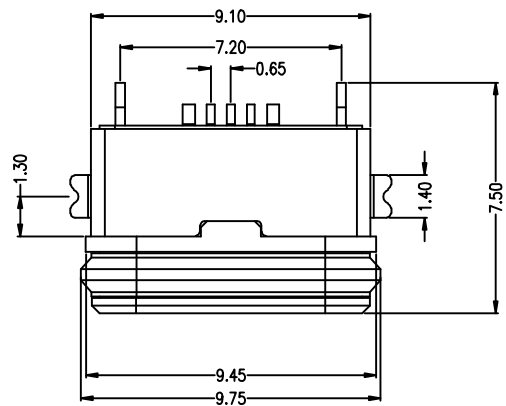


7	8	9	10
MAPX	MODIFICATION		DATE



RECOMMEND PCB LAYOUT  
PCB 图仅供参考

- Note:
- Material:
    - Housing: High temperature thermoplastic
    - Contact: copper alloy, t=0.20mm
    - Shell: SUS304, t=0.30mm
    - cover: High temperature thermoplastic
    - out Shell: SUS304 T=0.25
    - Ring: SILICON
    - Epoxy: Epoxy
  - Specification:
    - Current rating: 1,5PIN 2.0A Max/2,3,4PIN 1A Max.
    - Dielectric withstanding voltage: 100 V(ac) for 1 min.
    - Contact resistance: 30 mΩ Max.
    - Insulation resistance: 100 MΩ Min.
    - Total mating force: 3.57 Kgf Max.
    - Total unmating force: 1.0 Kgf Min.
    - Temperature range: -30°C~80°C
    - Waterproof: IPX 7.

<b>产品图</b> PRODUCT CHART DWG <b>公差一览表</b> TOLERANCE UNLESS OTHERWISE		<b>深圳市精拓金电子有限公司</b>							
X.	±0.30 X.	±5.°	单位	MM	制图	YANG	制图料号	920-A64A2021S101A0	
.X	±0.25 .X	±2.°	比例	1:1	审核	郭志富	产品名称	精拓金 920-A64A2021S101A0 1.0mm间距 4PIN 连接器	
.XX	±0.15 .XX	±1.°	日期	2019.11.23	核准	黄国荣	产品图号	角法	
.XXX	±0.10 .XXX	±0.5'	DATE	2019.11.23	APPD	黄国荣	角法	版本	A0