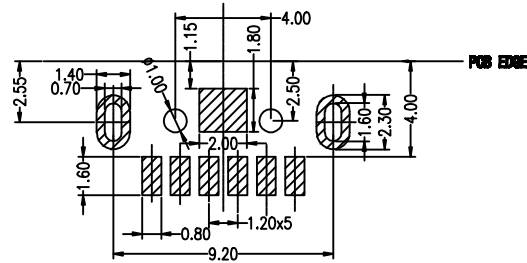
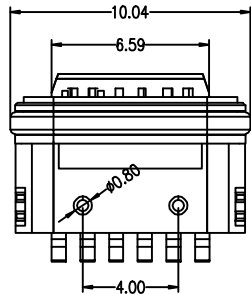
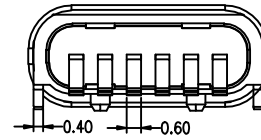
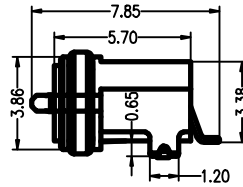
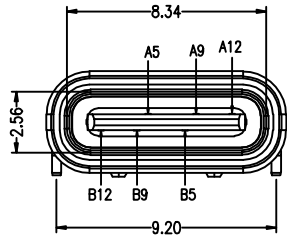
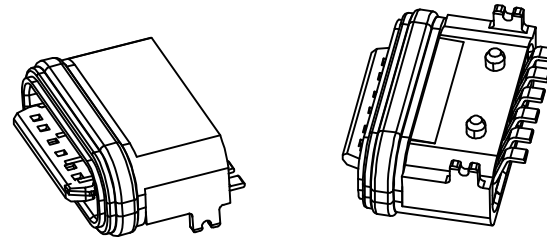
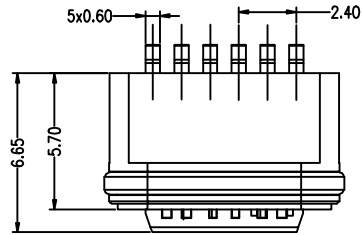


7	8	9	10
MAPX	MODIFICATION		DATE



PCB LAYOUT 图仅供参考

Note:
 1.Material:
 1.1 Housing: PA9T
 1.2 Contact:C5191,t=0.20mm
 1.3 Shell: Kirsite
 2.ELECTRICAL:
 2-1:CURRENT RATING:
 VBUS AND GND CONTACTS RATED AT 1.25A
 PARALLELED FOR A TOTAL OF 5A;
 2-2:INITIAL CONTACT RESISTANCE :40 MEGOHMS
 2-3:DIELECTRIC WITHSTANDING VOLTAGE:
 100V AC MIN;
 3:MECHANICAL CHARACTERISTICS:
 3-1:MATING FORCE:5~20N
 3-2:UNMATING FORCE:8~20N(INITIAL),
 6~20N(AFTER 10000 CYCLES)
 3-3:FREQUENCY: 200±50 CYCLES /HOUR,10000 CYCLES
 3-4:OPERATING TEMPERATURE ;-40'~80'.
 4: WATERPROOF: IP-X7.

产品图 PRODUCT CHART DWG 公差一览表 TOLERANCE UNLESS OTHERWISE			深圳市精拓金电子有限公司						
单位 UNITS	MM	制图 DRAWING	YANG	制图料号 PRODUCT PART NO.	918-415K3028840000				
.X ±0.30 X ±5.°		比例 SCALE	审核 CHKD	产品名称 PRODUCT NO.	TYPE-C 12PIN 4.7A 5.7A 6.0P 12PIN 12V 1W 100V				
.XX ±0.25 .X ±2.°		日期 DATE	核准 APPD	角法 VIEW	版本 VER	A0			
.XX ±0.15 .XX ±1.°		2019.11.23	黄国荣	角法 VIEW	版本 VER	A0			
.XXX ±0.10 .XXX ±0.5'									