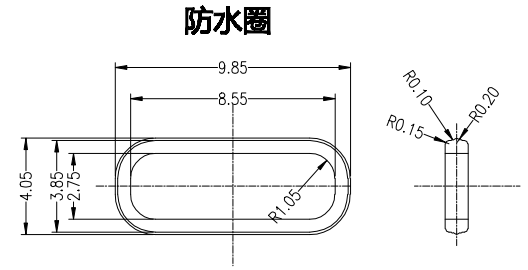
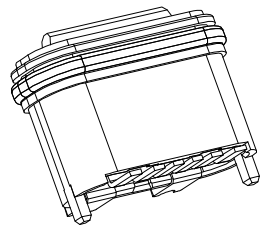
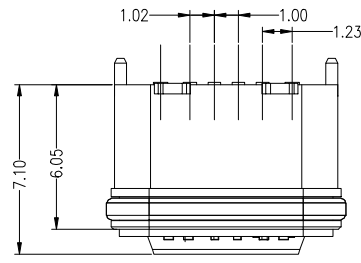
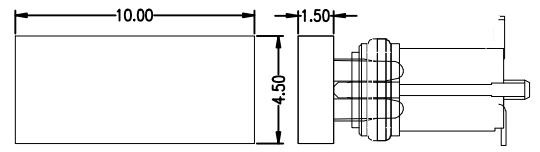


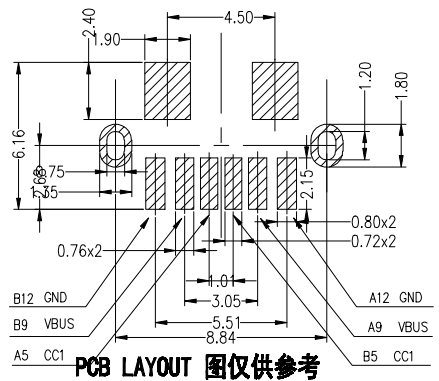
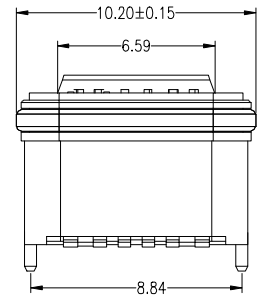
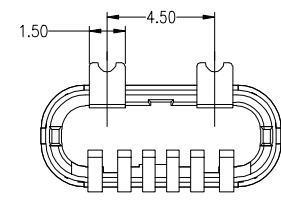
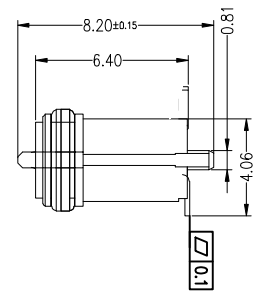
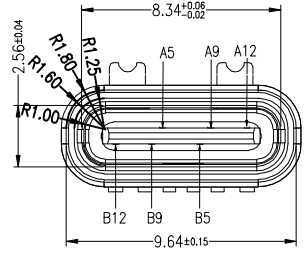
7	8	9	10
MAPX	MODIFICATION		DATE



防水圈



- Note:
- Material:
 - Housing: lcp
 - Contact:C5191,t=0.20mm
 - Shell: Zinc Alloy
 - ELECTRICAL:
 - CURRENT RATING:
 - VBUS AND GND CONTACTS RATED AT 1.5A PARALLELED FOR A TOTAL OF 3A;
 - INITIAL CONTACT RESISTANCE :40 MEGOHMS
 - DIELECTRIC WITHSTANDING VOLTAGE:
 - 100V AC MIN;
 - MECHANICAL CHARACTERISTICS:
 - MATING FORCE:5~20N
 - UNMATING FORCE:8~20N(INITIAL), 6~20N(AFTER 10000 CYCLES)
 - FREQUENCY: 200±50 CYCLES /HOUR,10000 CYCLES
 - OPERATING TEMPERATURE ; -40~80°.
 - WATERPROOF: IP-X7.



产品图 PRODUCT CHART DWG		深圳市精拓金电子有限公司							
公差一览表 TOLERANCE UNLESS OTHERWISE		单位 UNITS	MM	制图 DRAWING	YANG	制图料号 PRODUCT PART NO.	910-4102001/0000		
.X	±0.30 .X	±5.°		审核 CHKD	郭志富	产品名称 PRODUCT NO.	TYPE-C 1.1 立式防水插座 6.05/7.12mm 贴片型端子间距图/GPIN		
.XX	±0.25 .XX	±2.°	比例 SCALE	核准 APPD	黄国荣	角法 VIEW	版本 VER	A0	
.XXX	±0.15 .XXX	±1.°	日期 DATE		2019.11.23				
	±0.10 .XXX	±0.5°							