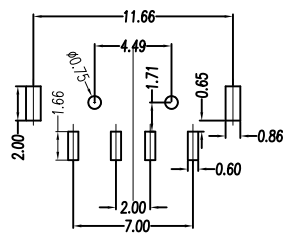
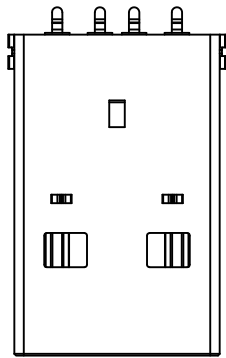


MAPX	MODIFICATION	DATE



RECOMMENDED P.C.B LAYOUT

规格型号: Specifications:

电气特性: Electrical:

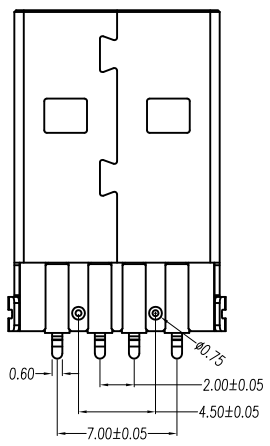
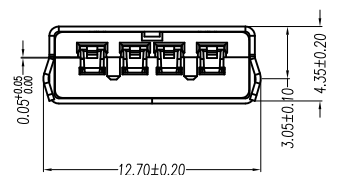
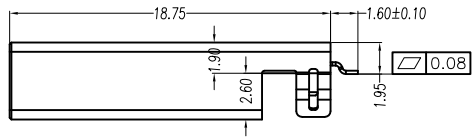
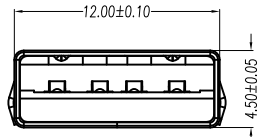
1. 额定电流: Current Rating
1.5A/contact terminal
2. 额定电压: Voltage Rating
30V DC
3. 接触阻抗: Contact Resistance
30 milliohms MAX
4. 耐电压: Dielectnic Withstanding Voitage:
500 V AC AT Sea Level
5. 阻抗: Lnsulation Resistance:
1000MEGA ohms MIN

物理性能: Mechanical:

1. 插拔力: Cnnector Mate and Unmate Force
Mate force: 3.57kgf (MAX)
Unmate force: 1.02kgf (MIN)
2. 端子保持力: Terminal Retenion
1.0kgf (MIN)

原材料: Matorial:

1. 塑膠: Housing:
Hing Temperature Tnermaplastics,
PBT\LCP White/Black
 2. 端子: Contact: Copper Alloy C2680
 3. 外壳 Shell: Copper Alloy C2680/SPCC
1. 端子: Contact: Plated Gold in Mating Area;
Tin On Solder Talls
 2. 外壳 Shell: Nickel Plating



产品图 PRODUCT CHART DWG				深圳市精拓金电子有限公司						
公差一览表 TOLERANCE UNLESS OTHERWISE				单位 UNITS	MM	制图 DRAWING	尹先华	制图料号 PRODUCT PART NO.	917-P81A202ES60201	
X.	±0.30	X.	±5.°	比例 SCALE	1:1	审核 CHKD	郭治富	产品名称 PRODUCT NO.	AM SMT沉板弯脚有孔铁壳带柱LCP黑胶24H	
.X	±0.25	.X	±2.°	日期 DATE	2021-04-15	核准 APPD	黄国荣	角法 VIEW	版本 VER	AO
.XX	±0.15	.XX	±1.°							
.XXX	±0.10	.XXX	±0.5°							