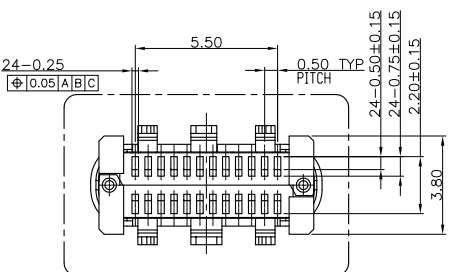
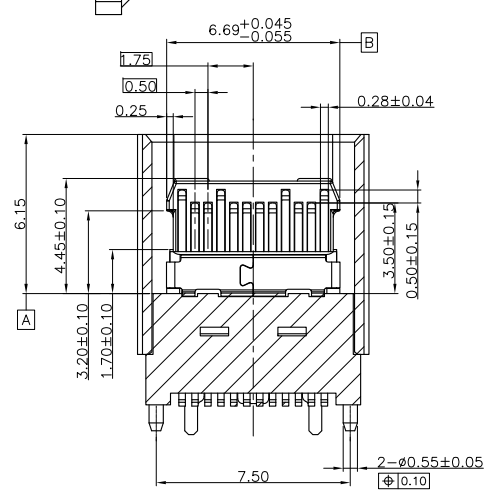
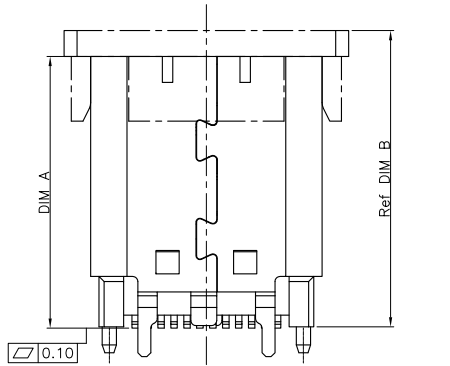
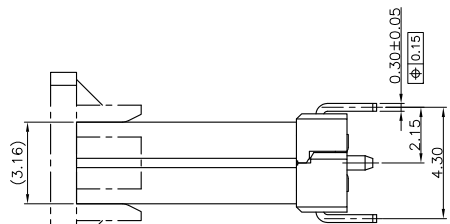
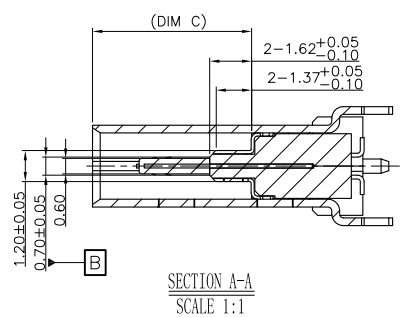
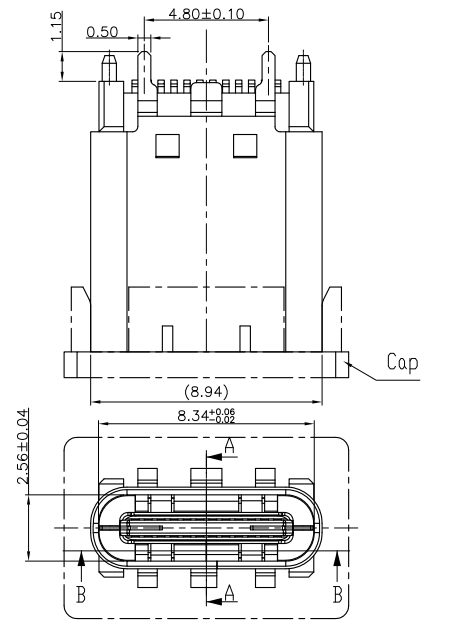


RoHS

MAPX	MODIFICATION	DRW	DATE

A  
B  
C  
D  
E  
F  
G

A  
B  
C  
D  
E  
F  
G



NOTES:

MOLDING: LCP UL94 V-0  
 CONTACT: COPPER ALLOY.  
 GOLD PLATING ALL OVER 50u" Min NICKEL  
 AND 100u" Min Tin ALL OVER 50u" Min NICKEL  
 ON SOLDER AREA  
 SHELL: SUS304-H,T=0.30±0.03mm  
 50u" NICKEL PLATING OVER ALL.  
 SHILD: SUS304-H,T=0.12±0.03mm

INSERTION: 5~20N.  
 EXTRACTION: 8~20N AFTER TEST .  
 DURABILITY: 10000 CYCLES

3.ELECTRICAL:  
 CURRENT: 5A FOR VBUS;  
 1.25A FOR GND PIN.  
 0.25A FOR OTHER.

VOLTAGE: 20 V MAX  
 WITHSTANDING VOLTAGE: 100V AC R.M.S  
 CONTACT RESISTANCE: 40mΩ MAX.  
 INSULATION RESISTANCE: 100MΩ MIN.

4.ENVIRONMENTAL  
 TEMPERATURE RANGE -55°C ~ +85°C

P/N:	DIM A	DIM B	DIM C
FUCR-244X-04XX	10.50	11.5	6.15
FUCR-244X-14XX	9.30	10.3	4.95
FUCR-244X-24XX	8.80	9.80	4.45

<p>产品图 PRODUCT CHART DWG</p>		<p>深圳市精拓金电子有限公司 Shenzhen Jing Tuo Jin Electronics Co., Ltd.</p>								
<p>公差一览表 TOLERANCE UNLESS OTHERWISE</p>				单位	制图	审核	制图料号	<p>918-418K2022E40004</p>		
X.	±0.35	X.	±5.°	UNITS	MM	尹先华	PRODUCT PART NO.	TYPE-C3.1母座无边夹板间距0.8长度8.8		
.X	±0.25	.X	±2.°	SCALE	1:1	郭治富	产品名称	LCP黑胶 24PIN		
.XX	±0.20	.XX	±1.°	日期	2021-04-15	黄国荣	角法	版本	A0	
.XXX	±0.10	.XXX	±0.5°	DATE	2021-04-15	APPD	VIEW	VER	A0	

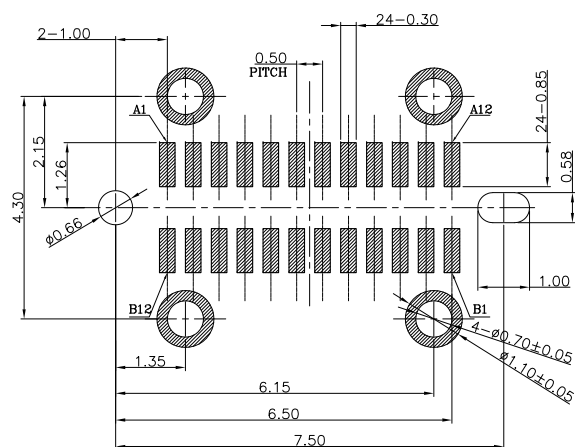
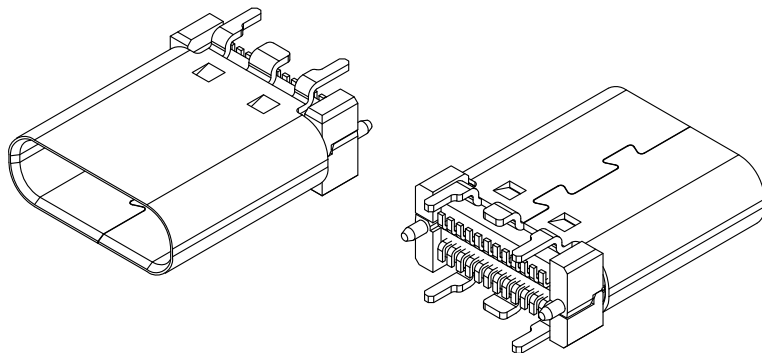
RoHS

MAPX

MODIFICATION

DRW

DATE



RECOMMENDED P.C.B. LAYOUT (T:1.00mm)  
TOLERANCE UNSPECIFIED  $\pm 0.05\text{mm}$   
SCALE: 2:1

USB TYPE-C FULL-FEATURED RECEPTACLE INTERFACE PIN ASSIGNMENTS

PIN	Signal Name	Description	PIN	Signal Name	Description
A1	GND	Ground return	B12	GND	Ground return
A2	SSTXp1	Positive half of first SuperSpeed TX differential pair	B11	SSRXp1	Positive half of first SuperSpeed RX differential pair
A3	SSTXn1	Negative half of first SuperSpeed TX differential pair	B10	SSRXn1	Negative half of first SuperSpeed RX differential pair
A4	VBUS	Bus Power	B9	VBUS	Bus Power
A5	CC1	Configuration Channel	B8	SBU2	Sideband Use (SBU)
A6	Dp1	Positive half of the USB 2.0 differential pair-Position 1	B7	Dn2	Negative half of the USB 2.0 differential pair-Position 2
A7	Dn1	Negative half of the USB 2.0 differential pair-Position 1	B6	Dp2	Positive half of the USB 2.0 differential pair-Position 2
A8	SBU1	Sideband Use (SBU)	B5	CC2	Configuraation Channel
A9	VBUS	Bus Power	B4	VBUS	Bus Power
A10	SSRXn2	Negative half of second SuperSpeed RX differential pair	B3	SSTXn2	Negative half of second SuperSpeed TX differential pair
A11	SSRXp2	Positive half of second SuperSpeed RX differential pair	B2	SSTXp2	Positive half of second SuperSpeed TX differential pair
A12	GND	Ground return	B1	GND	Ground return

产品图

PRODUCT CHART DWG

公差一览表

TOLERANCE UNLESS OTHERWISE

X.	$\pm 0.35$	X.	$\pm 5.^\circ$
.X	$\pm 0.25$	.X	$\pm 2.^\circ$
.XX	$\pm 0.20$	.XX	$\pm 1.^\circ$
.XXX	$\pm 0.10$	.XXX	$\pm 0.5^\circ$

深圳市精拓金电子有限公司  
Shenzhen Jing Tuo Jin Electronics Co., Ltd.

单位 UNITS	MM	制图 DRAWING	尹先华	制图料号 PRODUCT PART NO.	918-418K2022E40004
比例 SCALE	1:1	审核 CHKD	郭治富	产品名称 PRODUCT NO.	TYPE-C3.1母座无边夹板间距0.8长度8.8 LCP黑胶 24PIN
日期 DATE	2021-04-15	核准 APPD	黄国荣	角法 VIEW	版本 VER

A0

RoHS

MAPX

MODIFICATION

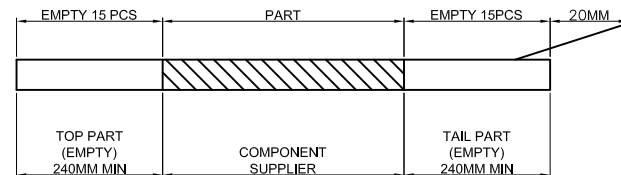
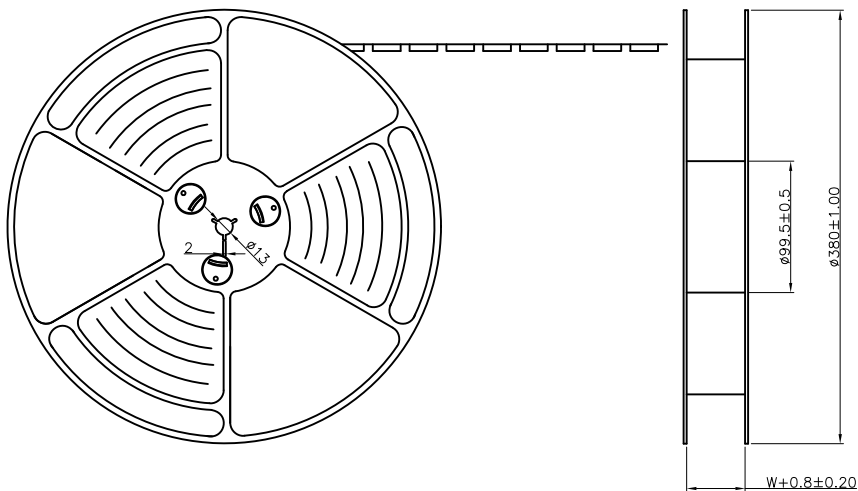
DRW

DATE

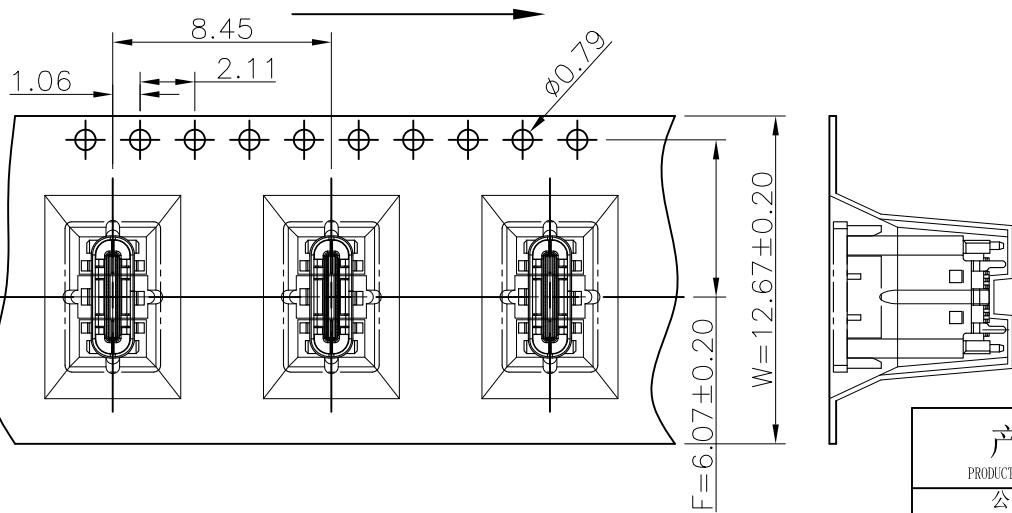
出料方向  
PULL OUT DIRECTEON

NOTES

- 1. 帶子引導長度  
LEAD TAPE LENGTH  
出料方向  
PULL OUT DIRECTEON



- 2. 出貨運輸過程中一定注意：  
THIS REQUIREMENT SHOULD BE APPLIED AT SHIPMENT：  
卷帶在運輸過程中不能散開  
PEELING OFF SHOULD NOT BE ALLOWED DURING TRANSPORTATION



产品图 PRODUCT CHART DWG				深圳市精拓金电子有限公司 Shenzhen Jing Tuo Jin Electronics Co., Ltd.						
公差一览表 TOLERANCE UNLESS OTHERWISE				单位 UNITS	MM	制图 DRAWING	尹先华	制图料号 PRODUCT PART NO.	918-418K2022E40004	
X.	±0.35	X.	±5.°	比例 SCALE	1:1	审核 CHKD	郭治富	产品名称 PRODUCT NO.	TYPE-C3.1母座无边夹板间距0.8长度8.8 LCP黑胶 24PIN	
.X	±0.25	.X	±2.°	日期 DATE	2021-04-15	核准 APPD	黄国荣	角法 VIEW	版本 VER	A0
.XX	±0.20	.XX	±1.°							
.XXX	±0.10	.XXX	±0.5°							

RoHS

MAPX

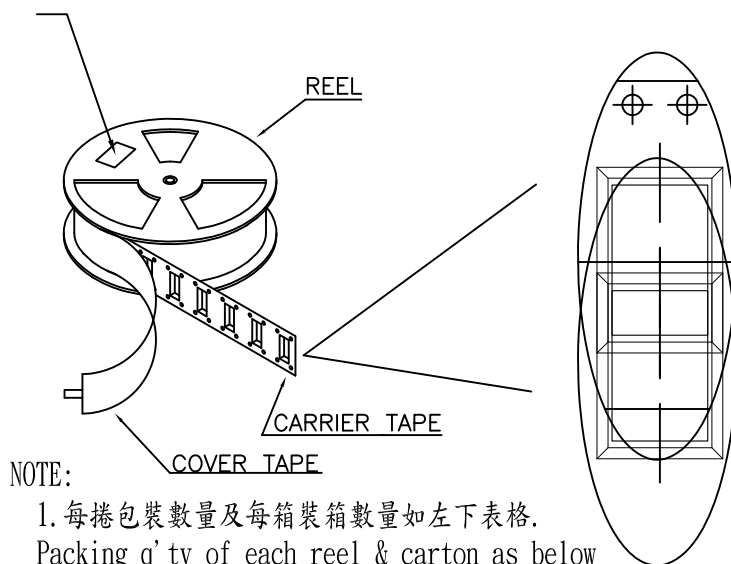
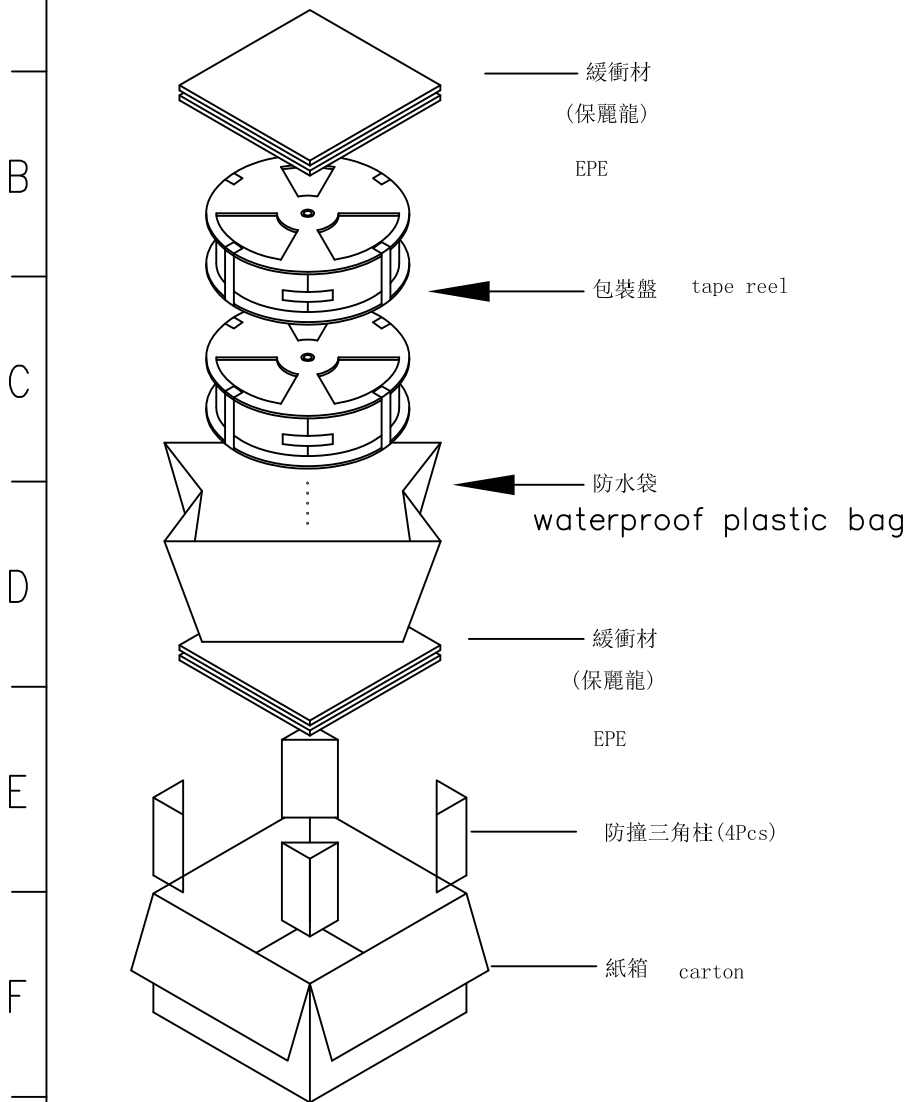
MODIFICATION

DRW

DATE

at small positioning hole of the carrier tape side).  
 標籤黏貼處 (朝捲裝包材的小定位孔一側)

Location of label sticking (label



NOTE:

1. 每捲包裝數量及每箱裝箱數量如左下表格。  
Packing q'ty of each reel & carton as below table shown.
2. 以上膠帶覆蓋下包裝帶經包裝機熱熔包裝  
Use cover tape to cover and hot melt machine to seal up.
3. 每個紙箱放2個珍珠棉  
Every carton use 2pcs EPE.
4. 將裝滿產品的卷盤放入紙箱并以膠帶封口  
Put reels in the carton and use adhesive tape to seal up.

包裝容量 (PACKING CAPACITY)			重量 WEIGHT (Kg)		
PCS/REEL	REELS/CARTON	PCS/CARTON	N.W./PCS	N.W./BOX	G.W./BOX
450	8	3600			

产品图 PRODUCT CHART DWG		深圳市精拓金电子有限公司 Shenzhen Jing Tuo Jin Electronics Co., Ltd.							
公差一览表 TOLERANCE UNLESS OTHERWISE				单位 UNITS	MM	制图 DRAWING	尹先华	制图料号 PRODUCT PART NO.	918-418K2022E40004
X.	±0.35	X.	±5.°	比例 SCALE	1:1	审核 CHKD	郭治富	产品名称 PRODUCT NO.	TYPE-C3.1母座无边夹板间距0.8长度8.8 LCP黑胶 24PIN
.X	±0.25	.X	±2.°	日期 DATE	2021-04-15	核准 APPD	黄国荣	角法 VIEW	版本 VER
.XX	±0.20	.XX	±1.°						A0
.XXX	±0.10	.XXX	±0.5°						