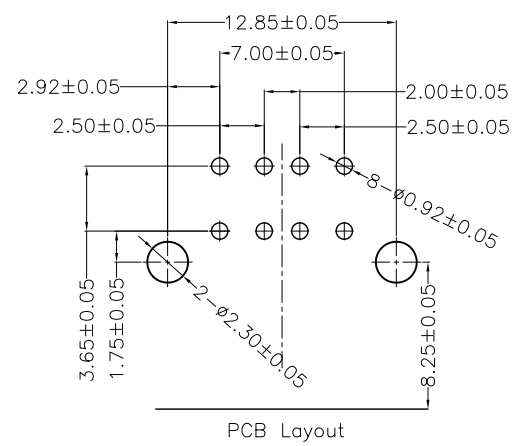
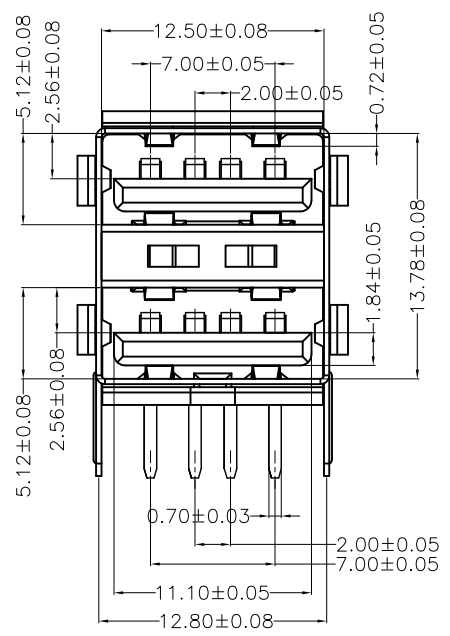
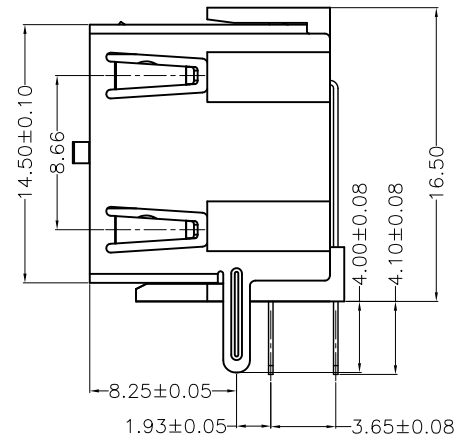
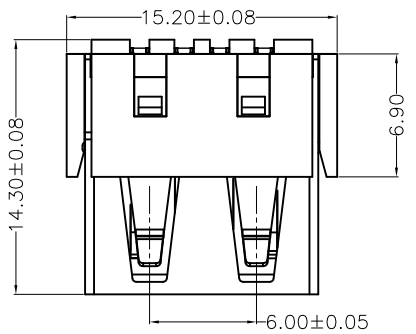


|      |              |      |
|------|--------------|------|
| MAPX | MODIFICATION | DATE |
|      |              |      |



NOTES:

- 1. HOUSING: SEE NOTES, UL94V-0 .
- TERMINAL: SEE NOTES.
- SHELL: SEE NOTES.

SPECIFICATION:

- 1. ELECTRICAL CHARACTERISTIC:
  - CONTACT RESISTANCE: 30MΩ MAX
  - DIELECTRIC WITHSTANDING VOLTAGE: 500V AC FOR 1MIN
  - INSULATION RESISTANCE: 1000MΩ MIN
- 2. MECHANICAL CHARACTERISTIC:
  - INSERTION FORCE: 35N(3.57KGF) MAX
  - EXTRACTION FORCE: 10~35N(1.02~3.57KGF) MIN
- 3. Contact finish:
  - 01: Selective Gold Flash
  - 02: Selective Gold 3U"
  - 03: Selective Gold 5U"
  - 04: Selective Gold 15U"
  - 05: Selective Gold 30U"

|                                     |       |              |       |               |            |                          |                                |  |  |
|-------------------------------------|-------|--------------|-------|---------------|------------|--------------------------|--------------------------------|--|--|
| 产品图<br>PRODUCT CHART DWG            |       | 深圳市精拓金电子有限公司 |       |               |            |                          |                                |  |  |
| 公差一览表<br>TOLERANCE UNLESS OTHERWISE |       | 单位<br>UNITS  | MM    | 制图<br>DRAWING | Z-Y-B      | 制图料号<br>PRODUCT PART NO. | 907-221B1011D10200             |  |  |
| X                                   | ±0.15 | X            | ±5°   | 比例<br>SCALE   | 1:1        | 审核<br>CHKD               | 产品名称<br>PRODUCT NAME           |  |  |
| .X                                  | ±0.10 | .X           | ±2°   | 日期<br>DATE    | 2010.05.06 | 核准<br>APPD               | AF90度14.5双层短体直脚无边<br>铁壳反向PBT白胶 |  |  |
| .XX                                 | ±0.05 | .XX          | ±1°   | 角法<br>VIEW    |            | 版本<br>VER                | AO                             |  |  |
| .XXX                                | ±0.03 | .XXX         | ±0.5° |               |            |                          |                                |  |  |