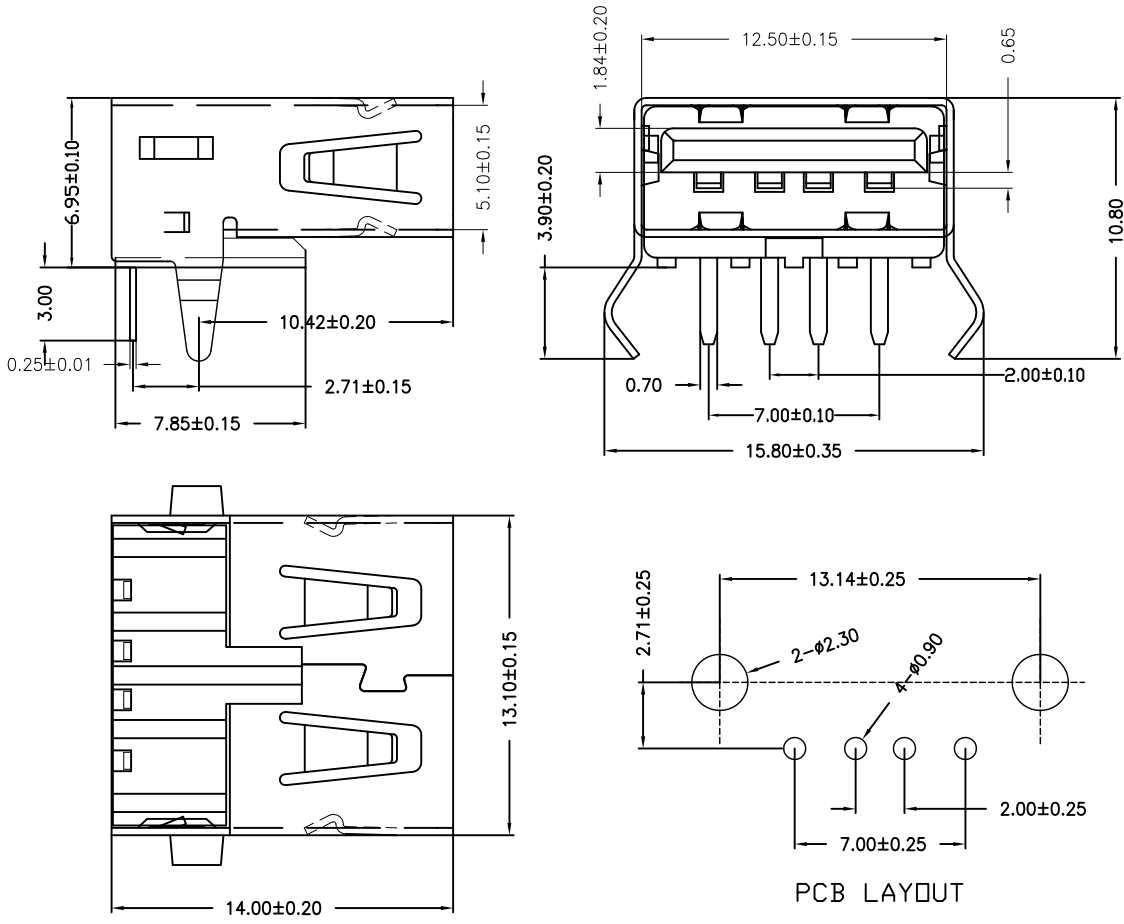


|                   |                             |                   |
|-------------------|-----------------------------|-------------------|
| 目錄<br><b>MAPX</b> | 設變內容<br><b>MODIFICATION</b> | 日期<br><b>DATE</b> |
|                   |                             |                   |



NOTE:

- Material:
  - Housing: Thermoplastics, UL94V-0 (ROHS, HF)
  - Contact: Phosphor Bronze C5191-EH/C2680-EH, T=0.25mm
  - Shell: COPPER ALLOY T=0.30mm
- FINISH:
  - Contact: 15u" Gold Plated on Contact Area, 80u" Min. Tin Plated on Solder Area, 50u" Min. Nickel Underplating Over All.
  - Shell: 50u" Min. Nickel Underplating Over All.
- Specification:
  - Rating:
    - Rated voltage 500V AC/DC. Rated current: 2 A Max.
  - Electrical:
    - Insulation Resistance (EIA-364-21): 1000MΩ Min. at 500V/DC for 1Minute.
    - Contact Resistance (EIA-364-23): 30 mΩ Max. at 20mV Max, 50mA
    - Dielectric Withstanding Voltage (EIA-364-20): No discharge, flashover or breakdown at 500V/AC 1Minute
- Plug extraction force shall be between 1.0kgf and 2.00kgf
- Contact finish:
  - 01: Selective Gold Flash
  - 02: Selective Gold 1U"
  - 03: Selective Gold 3U"
  - 04: Selective Gold 5U"
  - 05: Selective Gold 15U"
  - 06: Selective Gold 30U"

|                                     |       |       |       |              |     |               |            |                          |                                      |            |
|-------------------------------------|-------|-------|-------|--------------|-----|---------------|------------|--------------------------|--------------------------------------|------------|
| 产品图<br>PRODUCT CHART DWG            |       |       |       | 深圳市精拓金电子有限公司 |     |               |            |                          |                                      |            |
| 公差一览表<br>TOLERANCE UNLESS OTHERWISE |       |       |       | 单位<br>UNITS  | MM  | 制图<br>DRAWING | Z-Y-B      | 产品料号<br>PRODUCT PART NO. | 903-142A1011D10110                   |            |
| X.                                  | ±0.25 | X'    | ±5'   | 比例<br>SCALE  | 1:1 | 审核<br>CHKD    | 日期<br>DATE | 产品名称<br>PRODUCT NO.      | AF90度无后盖弯脚无边内弹14.0<br>铜壳T型PBT白胶/单格吸塑 |            |
| .X                                  | ±0.20 | .X'   | ±2'   |              |     |               |            |                          | 核准<br>APPD                           | 2015.08.14 |
| .XX                                 | ±0.15 | .XX'  | ±1'   |              |     |               |            |                          |                                      |            |
| .XXX                                | ±0.10 | .XXX' | ±0.5' |              |     |               |            |                          |                                      |            |