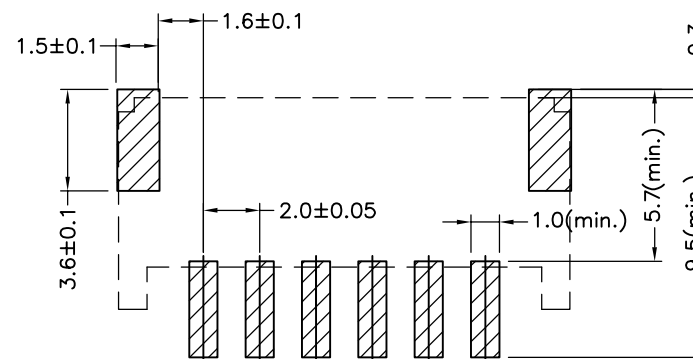
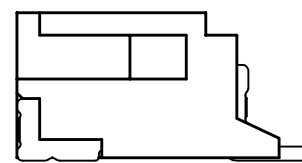
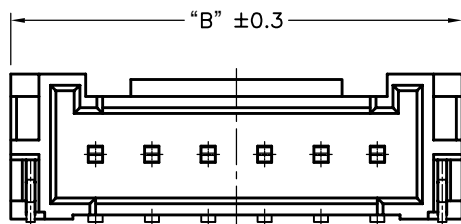
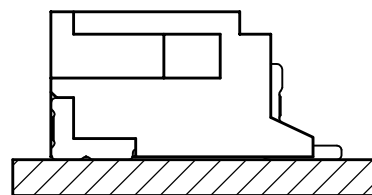
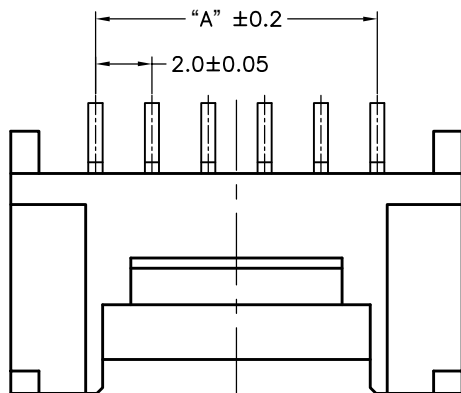


环保物料

TEL:0769-82001899

Poles	DIM.A	DIM.B
2	2.0	8.0
3	4.0	10.0
4	6.0	12.0
5	8.0	14.0
6	10.0	16.0
7	12.0	18.0
8	14.0	20.0
9	16.0	22.0
10	18.0	24.0
11	20.0	26.0
12	22.0	28.0
13	24.0	30.0
14	26.0	32.0
15	28.0	34.0
16	30.0	36.0



P.C.B LAYOUT

SPECIFICATIONS

- 1.Voltage rating: 250V AC, DC
 - 2.Current rating: 2A, AC, DC
 - 3.Withstanding Voltage: 1000V AC/minute
 - 4.Insulation resistance:1000M min
 - 5.Temperature range: -25 ° C+85 ° C
 - 6.Contact resistance: 20m max
- WAFER

Housing Material: PA9T/LCP UL 94V0
 Pin Material: Phosphor Bronze or Brass
 Contact Area Plating: Plated Tin or Plated Gold
 Mates with :P2016 series Housing

Poles:02-16P

Part No.: M2016RS-xx-XX-R

R=卷装 无=管装

Pin位数

VER	MODIFICATION	DRAW	DATE
AO			

TOLERANCE UNLESS OTHERWISE

X.	± 0.30	X°	$\pm 5^\circ$
.X	± 0.20	.X°	$\pm 2^\circ$
.XX	± 0.08	.XX°	$\pm 1^\circ$
.XXX	± 0.03	.XXX°	$\pm 0.5^\circ$

DRAWN	CK tan
CHKD	
APPD	
VIEW	

XFCN 兴飞连接器有限公司
 XFCN CONNECTORS CO.,LTD.

PRODUCT NAME	2.00mm Crimp Style Connectors
PART. NO.	M2016RS-xx-XX-R

SHEET	1/1
DATE	2020. 04. 12
UNITS	mm
SCALE	1:1
DWG NO.	009