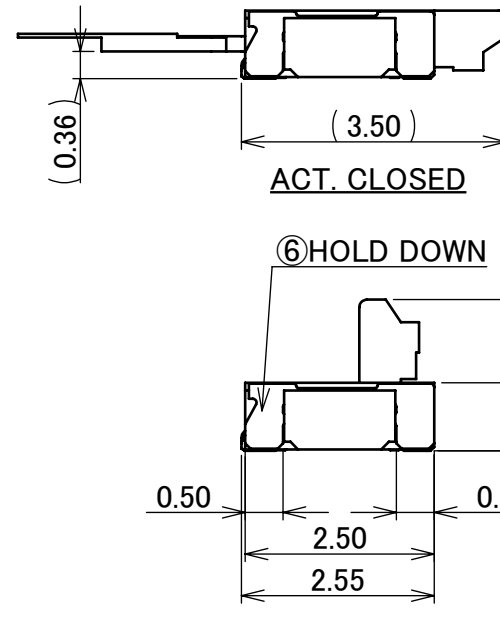
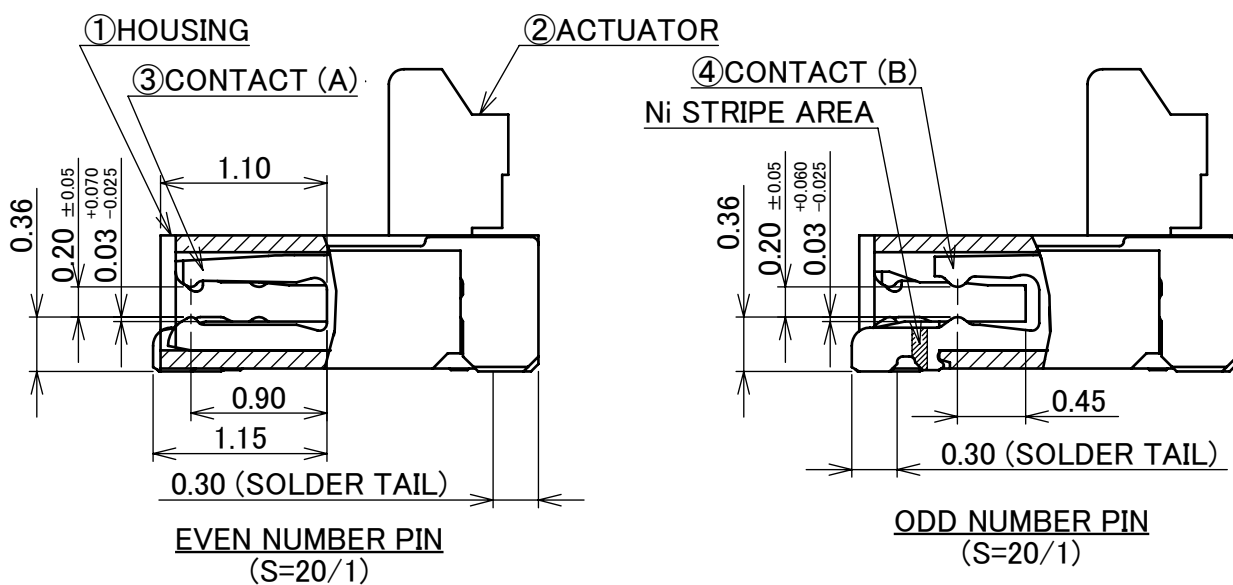
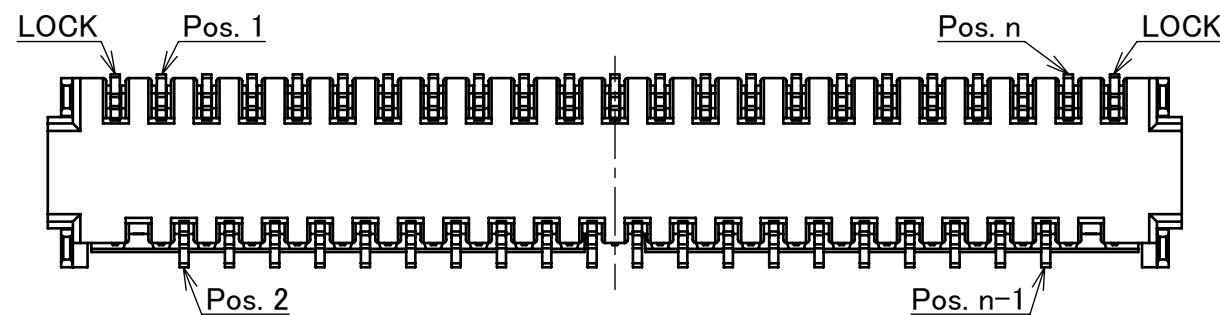
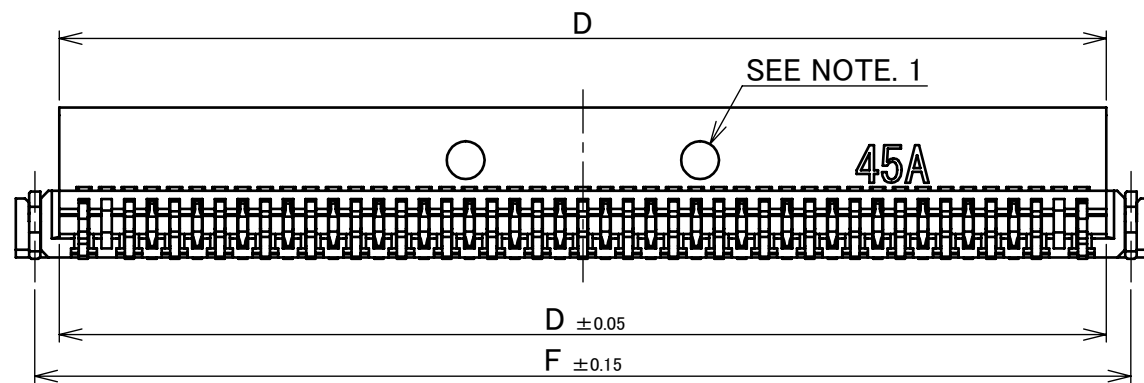
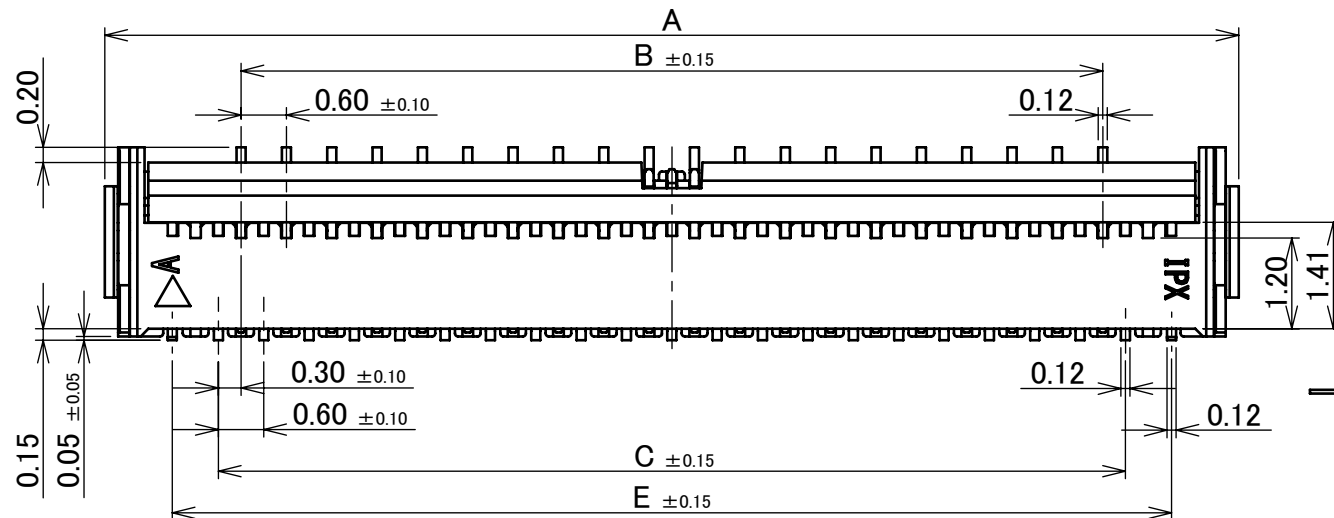


ODD NUMBER POS.



NOTES.  
1. THIS DENT SHAPE IS PURPOSED FOR GOOD INJECTION QUALITY.  
THIS DENT SHAPE WILL NOT AFFECT CONNECTR FUNCTION.  
DENT SHAPE SHOWN ON DRAWING IS JUST FOR REFERENCE.  
DENT SHAPE AND QUANTITY MIGHT CHABGE FROM DIFFERENT  
PIN COUNT AND DIFFERENT TOOLING.  
2. CONTACT POINT: TOP AND BOTTOM CONTACT

CAUTION VISIT OUR WEBSITE FOR LATEST VERSIONS OF INSTRUCTION MANUAL  
NO. HIM-18035 TO HANDLE THE PRODUCT PROPERLY AND SAFELY.

PART NO.	Pos.	A	B	C	D	E	F
20655-011E-01	11P	6.00	2.40	3.00	4.85	4.20	5.50
◆20655-029E-01	29P	11.40	7.80	8.40	10.25	9.60	10.90
◆20655-031E-01	31P	12.00	8.40	9.00	10.85	10.20	11.50
◆20655-035E-01	35P	13.20	9.60	10.20	12.05	11.40	12.70
◆20655-037E-01	37P	13.80	10.20	10.80	12.65	12.00	13.30
◆20655-041E-01	41P	15.00	11.40	12.00	13.85	13.20	14.50
20655-045E-01	45P	16.20	12.60	13.20	15.05	14.40	15.70
◆20655-047E-01	47P	16.80	13.20	13.80	15.65	15.00	16.30
◆20655-051E-01	51P	18.00	14.40	15.00	16.85	16.20	17.50
◆20655-053E-01	53P	18.60	15.00	15.60	17.45	16.80	18.10
◆20655-057E-01	57P	19.80	16.20	16.80	18.65	18.00	19.30

◆MARK MEANS NOT AVAILABLE.

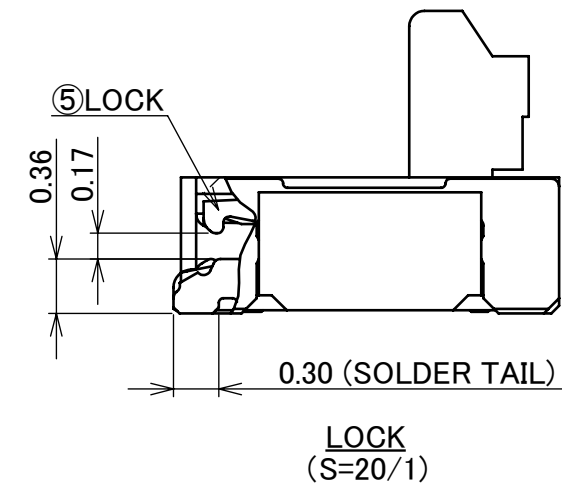
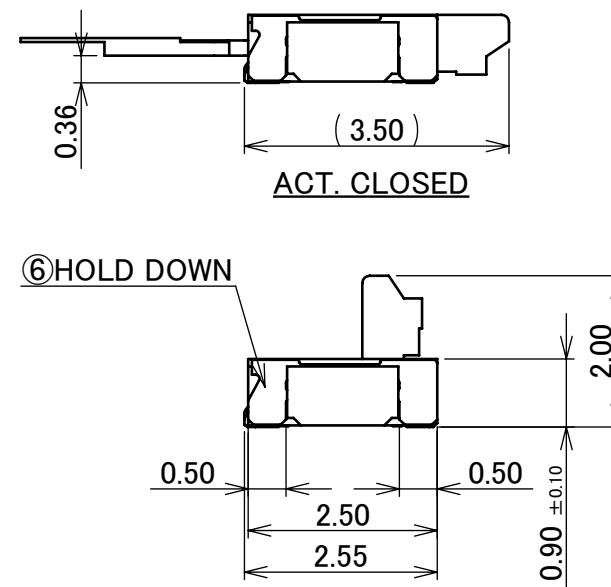
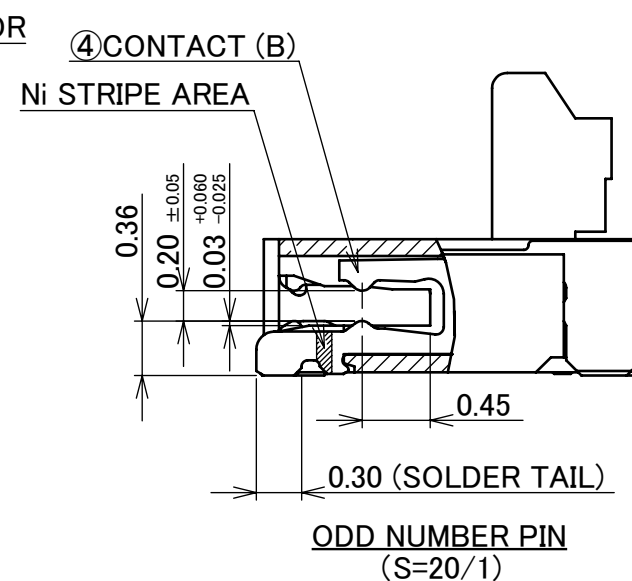
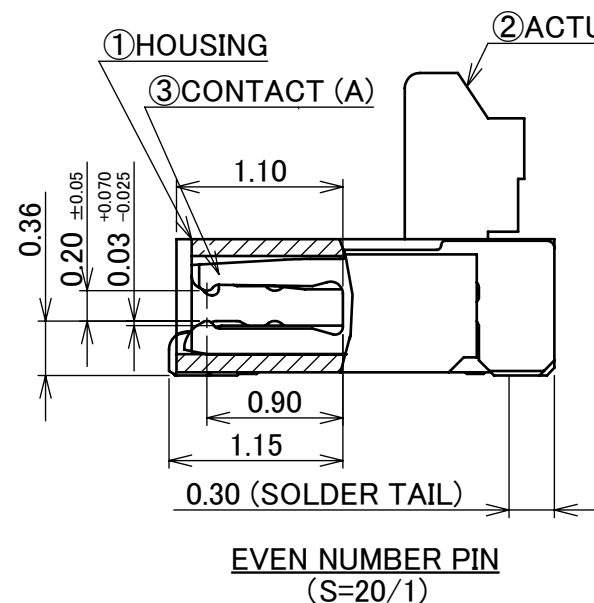
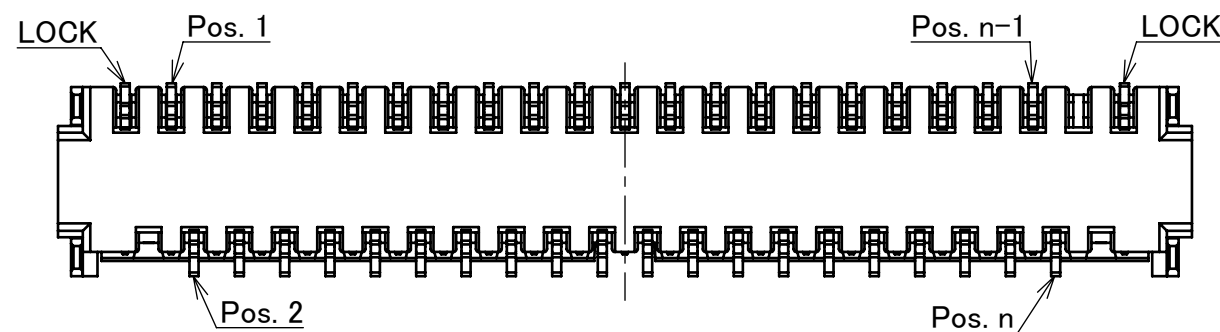
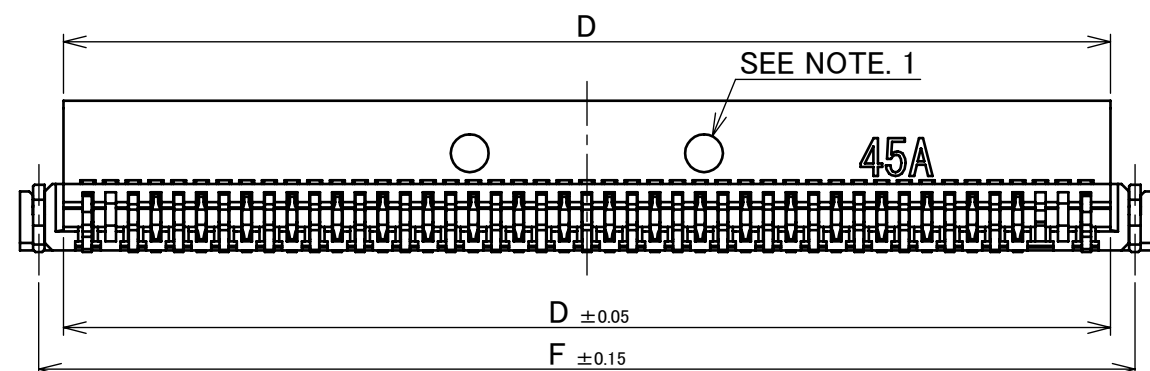
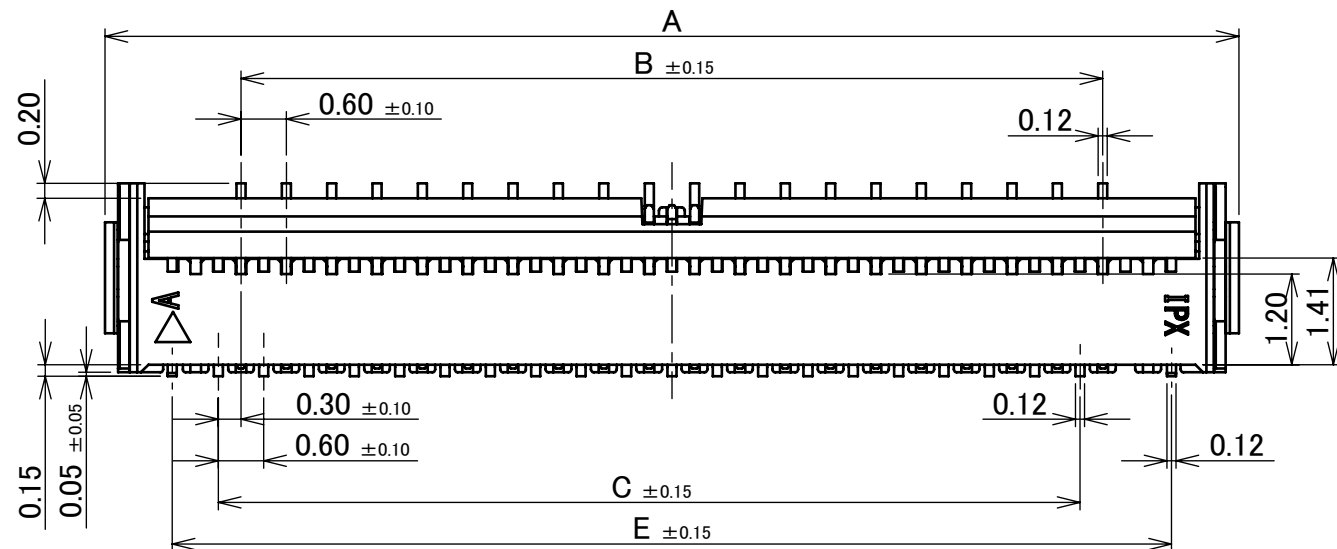
TABLE 1

PART NO.		FINISH	
20655-0**E-01		CONTACT AREA : Au 0.10 $\mu$ m MIN. OVER Ni 1.00 $\mu$ m MIN. SOLDERING AREA : Au 0.03 $\mu$ m MIN. OVER Ni 1.00 $\mu$ m MIN.	
6	HOLD DOWN	PHOSPHOR BRONZE	Sn 2~6 $\mu$ m OVER Ni 1.00 $\mu$ m MIN.
5	LOCK	PHOSPHOR BRONZE	SOLDERLING AREA: Au 0.03 $\mu$ m MIN. OVER Ni 1.00 $\mu$ m MIN.
4	CONTACT (B)	PHOSPHOR BRONZE	SEE TABLE 1, WITH Ni STRIPE
3	CONTACT (A)	PHOSPHOR BRONZE	SEE TABLE 1
2	ACTUATOR	LCP	UL94V-0, BEIGE
1	HOUSNIG	LCP	UL94V-0, BEIGE
NO.	DISCRIPTION	MATERIAL	FINISH , REMARKS

For BOE Technology Group Co., Ltd.

					ANGLE	$\pm 2^\circ$	6 OVER 30 MAX.	$\pm 0.3$	PROJECTION	SERIES No.	CUSTOMER COPY		
					6 MAX.	$\pm 0.2$	30 OVER 120 MAX.	$\pm 0.5$		R0			
					GENERAL TOLERANCE.				TITLE		SCALE	I-PEX	
2	Z210252	S.Sh	Mar./12/'21	H.I	DWG.	R.Takei	DATE	2015/12/24	MINIFLEX® 3-BFN		10:1		
1	Z181210	T.O	Sept./14/'18	H.I	CHK.	M.Muro			L-LK-HD TYPE		UNIT		
0	Z151500	R.T	Dec./24/'15		APP.				DWG. No.		mm		
REV.	ECN	BY	DATE	APP.	Y.Shimada				20655		SIZE	SHEET	REV.
REVISION RECORD											A3	1/7	2

# EVEN NUMBER POS.



PART NO.	Pos.	A	B	C	D	E	F
◆20655-030E-01	30P	12.00	8.40	8.40	10.85	10.20	11.50
20655-040E-01	40P	15.00	11.40	11.40	13.85	13.20	14.50
◆20655-050E-01	50P	18.00	14.40	14.40	16.85	16.20	17.50


◆MARK MEANS NOT AVAILABLE.

## NOTES.

- THIS DENT SHAPE IS PURPOSED FOR GOOD INJECTION QUALITY. THIS DENT SHAPE WILL NOT AFFECT CONNECTR FUNCTION. DENT SHAPE SHOWN ON DRAWING IS JUST FOR REFERENCE. DENT SHAPE AND QUANTITY MIGHT CHABGE FROM DIFFERENT PIN COUNT AND DIFFERENT TOOLING.
- CONTACT POINT: TOP AND BOTTOM CONTACT

CAUTION VISIT OUR WEBSITE FOR LATEST VERSIONS OF INSTRUCTION MANUAL NO. HIM-18035 TO HANDLE THE PRODUCT PROPERLY AND SAFELY.

For BOE Technology Group Co., Ltd.

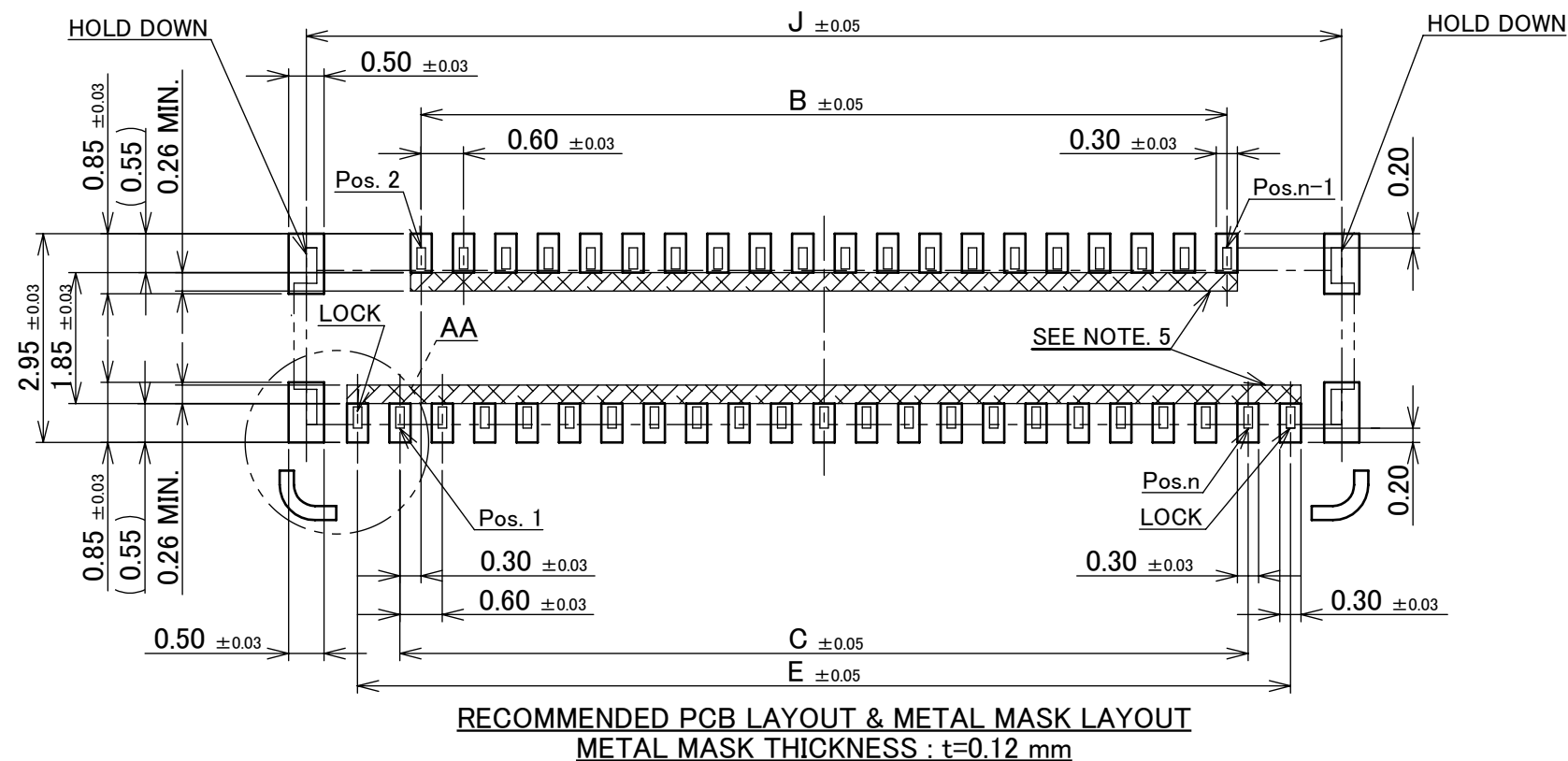
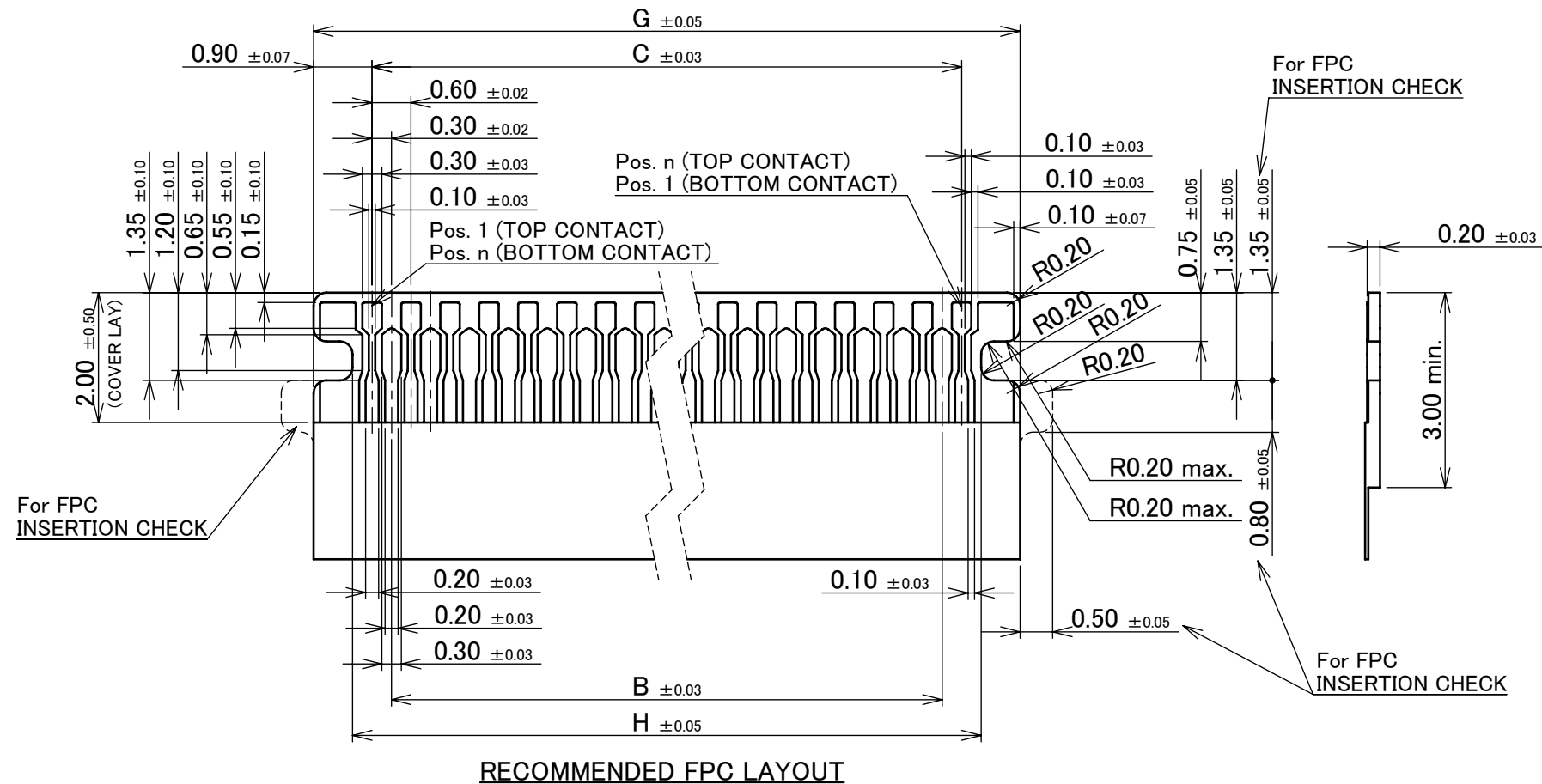
ANGLE	±2°	6 OVER 30 MAX.	±0.3		SERIES No.	CUSTOMER COPY		
6 MAX.	±0.2	30 OVER 120 MAX.	±0.5		R0			
GENERAL TOLERANCE.				TITLE MINIFLEX® 3-BFN L-LK-HD TYPE		SCALE	I-PEX	
DWG.	DATE					10:1		
CHK.				UNIT				
APP.				mm				
				DWG. No.	SIZE	SHEET	REV.	
				20655	A3	2/7	2	

ITEMS	SPECIFICATION
RATING VOLTAGE	50V AC/DC (PER CONTACT)
RATING AMPERAGE	0.3A DC (PER CONTACT)
OPERATING TEMPERATURE	233~358K(-40℃~85℃)
OPERATING HUMIDITY	20~80%RH (NON-CONDENSING)
CONTACT RESISTANCE	INITIAL : 60mohm MAX. / AFTER TEST : $\triangle$ 40mohm MAX.
INSULATION RESISTANCE	100Mohm MIN.
DIELECTRIC WITHSTANDING VOLTAGE	AC250V 1min
DURABILITY	20 CYCLES
ACTUATOR LOCKING FORCE (INITIAL / 20TH CYCLES)	INITIAL / 20 CYCLES 0.21N (21gf) $\times$ (n + 2) MAX.
ACTUATOR UNLOCKING FORCE (INITIAL / 20TH CYCLES)	INITIAL / 20 CYCLES 0.014N (1.4gf) $\times$ (n + 2) MIN.
FPC RETENTION FORCE (INITIAL / AFTER TEST)	INITIAL: 0.20N (20gf) $\times$ n + 1.0N MIN. / AFTER TEST: 0.20N (20gf) $\times$ n + 1.0N MIN.
COPLANARITY	0.10 MAX.
PRODUCT SPECIFICATION	PRS-2186
TEST REPORT	TR-15119
PACKING STANDARD	PST-15018
INSTRUCTION MANUAL	HIM-18035
APPEARANCE CRITERIA No.	QLS-A***

※ “n” IS THE NUMBER OF PIN

For BOE Technology Group Co., Ltd.										
ANGLE	$\pm 2^\circ$	6 OVER 30 MAX.	$\pm 0.3$	PROJECTION 	SERIES No. R0	CUSTOMER COPY				
6 MAX.	$\pm 0.2$	30 OVER 120 MAX.	$\pm 0.5$							
GENERAL TOLERANCE.				TITLE MINIFLEX® 3-BFN L-LK-HD TYPE		SCALE				
DWG.	DATE					UNIT				
CHK.						mm				
APP.						SIZE				
				DWG. No.		20655		SIZE	SHEET	REV.
								A3	3/7	2

ODD NUMBER POS.



PART NO.	Pos.	B	C	E	G	H	J
20655-011E-01	11P	2.40	3.00	4.20	4.80	3.60	5.65
◆20655-029E-01	29P	7.80	8.40	9.60	10.20	9.00	11.05
◆20655-031E-01	31P	8.40	9.00	10.20	10.80	9.60	11.65
◆20655-035E-01	35P	9.60	10.20	11.40	12.00	10.80	12.85
◆20655-037E-01	37P	10.20	10.80	12.00	12.60	11.40	13.45
◆20655-041E-01	41P	11.40	12.00	13.20	13.80	12.60	14.65
20655-045E-01	45P	12.60	13.20	14.40	15.00	13.80	15.85
◆20655-047E-01	47P	13.20	13.80	15.00	15.60	14.40	16.45
◆20655-051E-01	51P	14.40	15.00	16.20	16.80	15.60	17.65
◆20655-053E-01	53P	15.00	15.60	16.80	17.40	16.20	18.25
◆20655-057E-01	57P	16.20	16.80	18.00	18.60	17.40	19.45

◆ MARK MEANS NOT AVAILABLE.

## NOTES

### 3. MATERIAL

COVER FILM : PI

CONDUCTOR : COPPER(RARE)

BASE FILM : PI

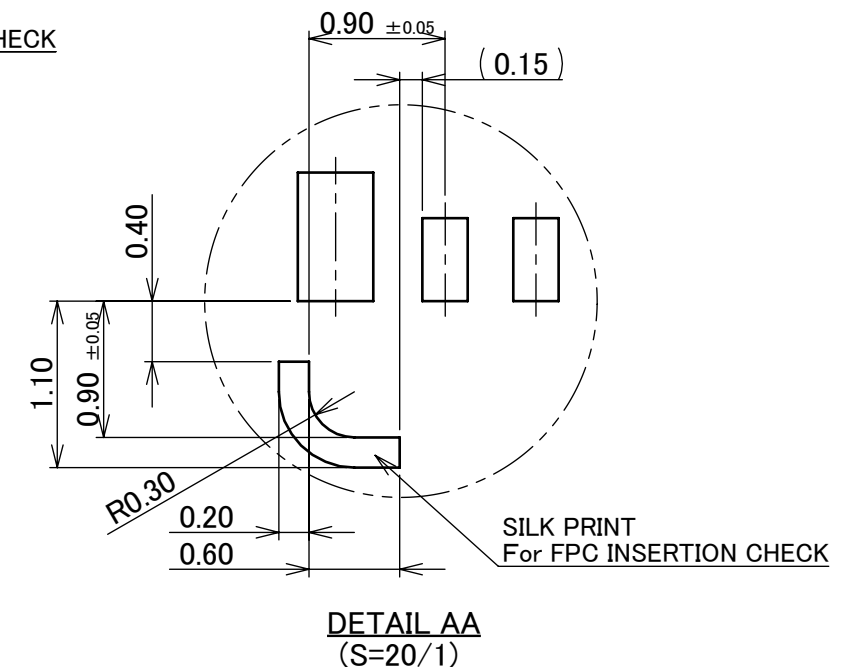
STIFFENER : PI

ADHESIVE: THER



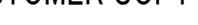
#### 4. FINISH

Au OVER Ni UNDER PLATING.

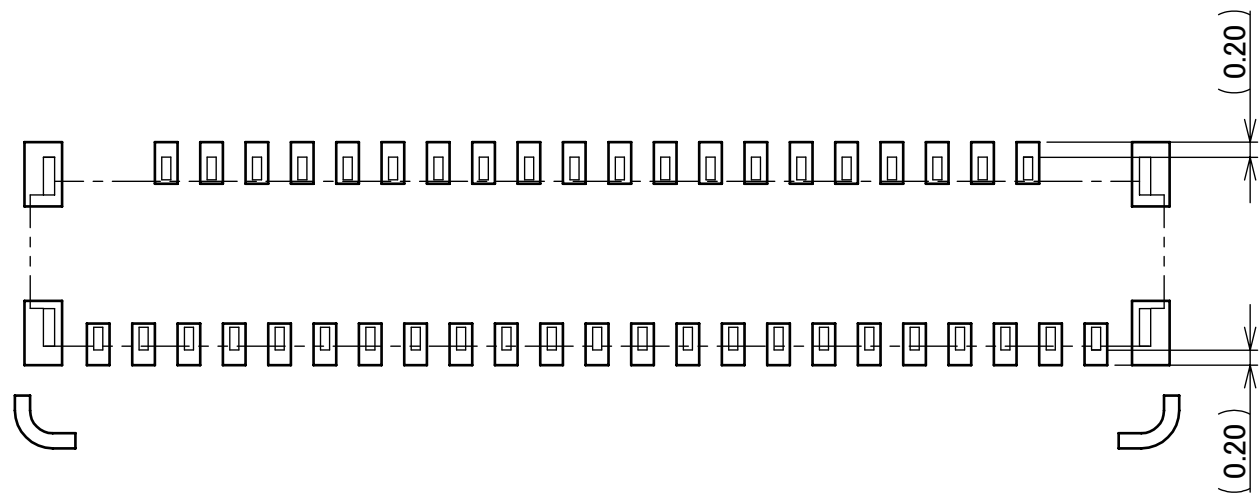
5. SOLDER RESIST SHALL BE APPLIED TO PREVENT SHORT CIRCUITS WHEN PLACING SIGNAL LINES ON GROUND AREA.



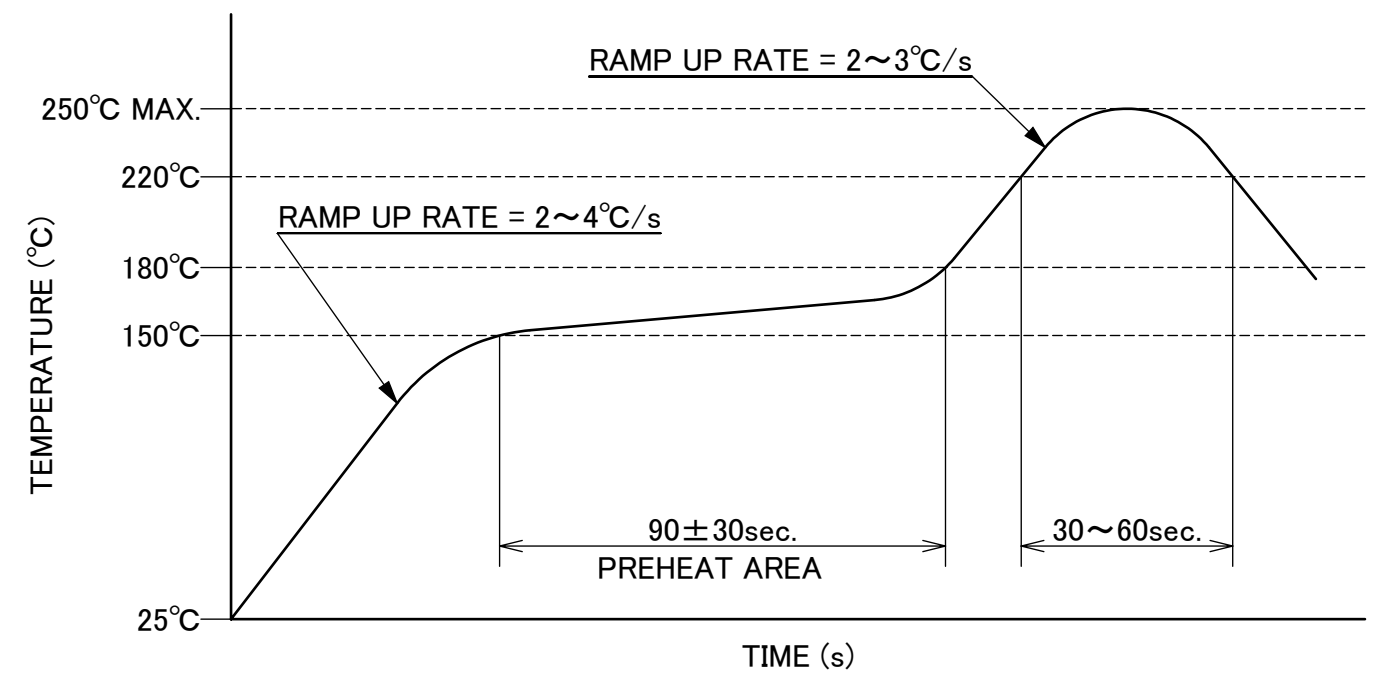
For BOE Technology Group Co., Ltd.

ANGLE	±2°	6 OVER 30 MAX.	±0.3	 PROJECTION	SERIES No. R0	CUSTOMER COPY		
6 MAX.	±0.2	30 OVER 120 MAX.	±0.5					
GENERAL TOLERANCE.				 MINIFLEX® 3-BFN L-LK-HD TYPE	SCALE 10:1 UNIT mm			
DWG. DATE								
CHK.								
APP.								
DWG. No. 20655				SIZE A3	SHEET 4/7	REV. 2		

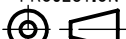





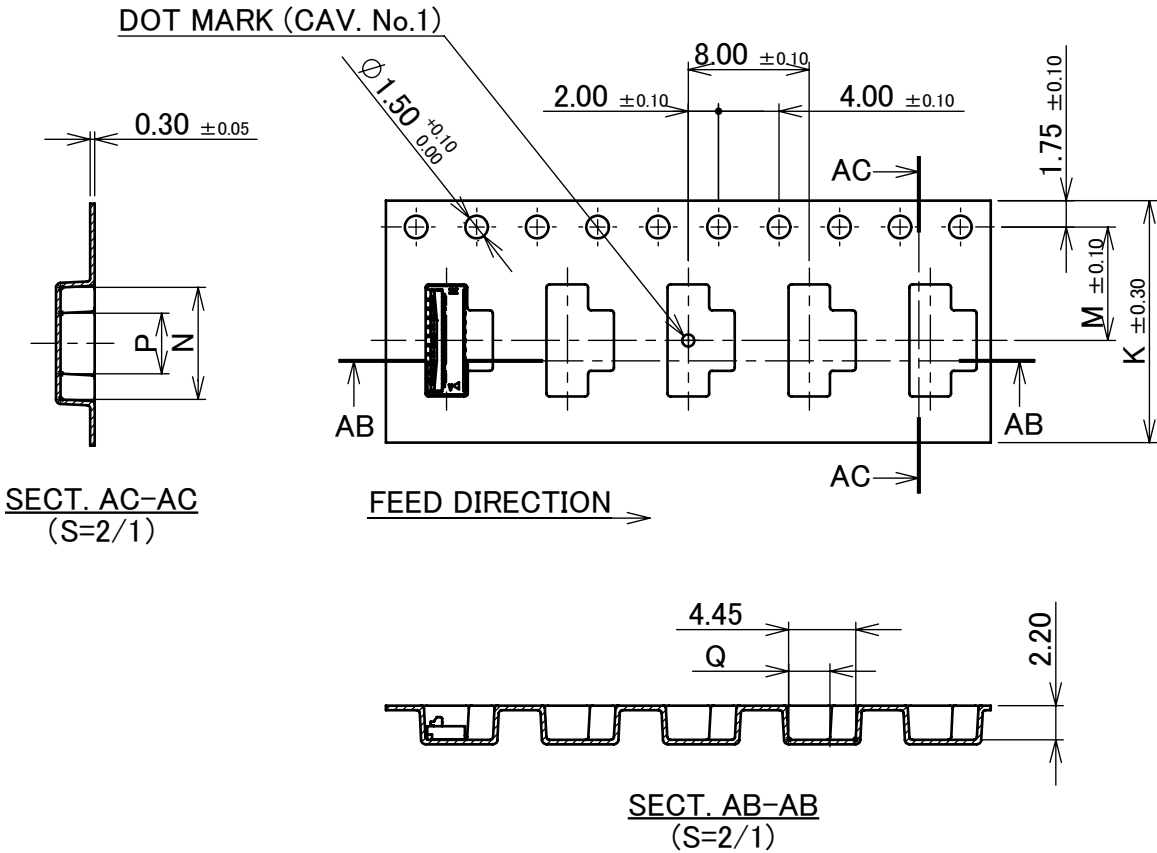
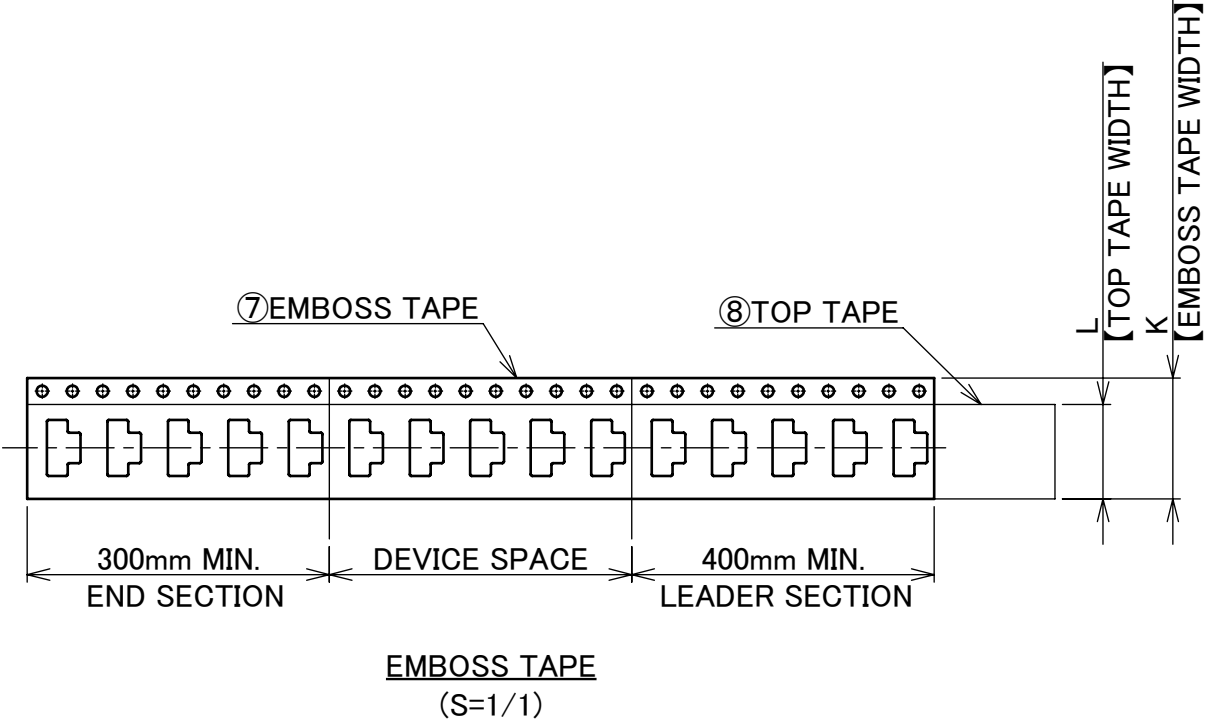
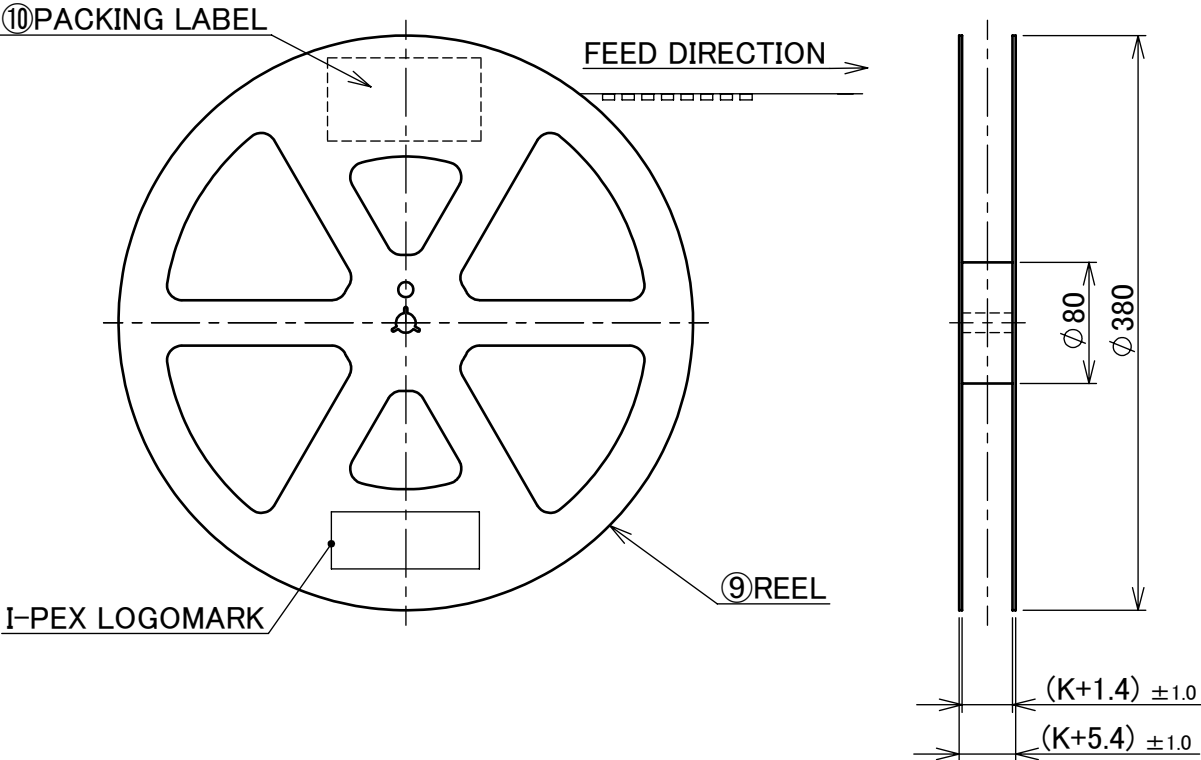
CONNECTOR ON RECOMMENDED PCB LAYOUT



REFLOW TEMPERATURE PROFILE  
SENJU METAL INDUSTRY CO., LTD. : M705-SHF(Sn96.5 Ag3.0 Cu0.5)

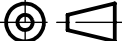
For BOE Technology Group Co., Ltd.									
ANGLE	±2°	6 OVER 30 MAX.	±0.3		SERIES No.	CUSTOMER COPY			
6 MAX.	±0.2	30 OVER 120 MAX.	±0.5		R0				
GENERAL TOLERANCE.				TITLE  MINIFLEX® 3-BFN L-LK-HD TYPE		SCALE			
DWG.		DATE				10:1			
CHK.						UNIT			
APP.				DWG. No.		mm	SIZE	SHEET	REV.
				20655		A3	6/7	2	

DEVICE P/N	K	L	M	N	P	Q	QTY. PER EMBOSS REEL (PIECES / REEL)	QTY. PER PACKING CARTON (REELS / CARTON)
20655-011E-01	16.0	13.5	7.50	6.20	4.00	2.75	4,000 / REEL	7 / CARTON = 28,000
20655-040E-01	24.0	21.5	11.50	15.40	8.00	2.95		5 / CARTON = 20,000
20655-045E-01				16.60				



- NOTES.
- TAPING SPECIFICATION FOLLOWS JIS C 0806 (IEC 60286-3).
  - MAKE EMPTY SECTION OF LEADER AND END ON EACH END OF THE TAPE.
  - TOP TAPE SHALL NOT STICK OUT FROM EMBOSS TAPE.
  - TOP TAPE SHALL NOT COVER FEED HOLE.

10	PACKING LABEL	-	-
9	REEL	PS	BLACK
8	TOP TAPE	PET t=0.062 TRANSPARENCY	ANTI-STATIC TYPE HEAT WELDING TYPE
7	EMBOSS TAPE	PS t=0.3 TRANSPARENCY	ANTI-STATIC TYPE
NO.	DISCRIPTION	MATERIAL	FINISH , REMARKS

For BOE Technology Group Co., Ltd.									
ANGLE	±2°	6 OVER 30 MAX.	±0.3	PROJECTION	SERIES No.	CUSTOMER COPY			
6 MAX.	±0.2	30 OVER 120 MAX.	±0.5		R0				
GENERAL TOLERANCE.				TITLE  MINIFLEX® 3-BFN L-LK-HD TYPE		SCALE	I-PEX		
DWG.		DATE				1:X			
CHK.						UNIT			
APP.						mm			
				DWG. No.		SIZE	SHEET	REV.	
				20655		A3	7/7	2	