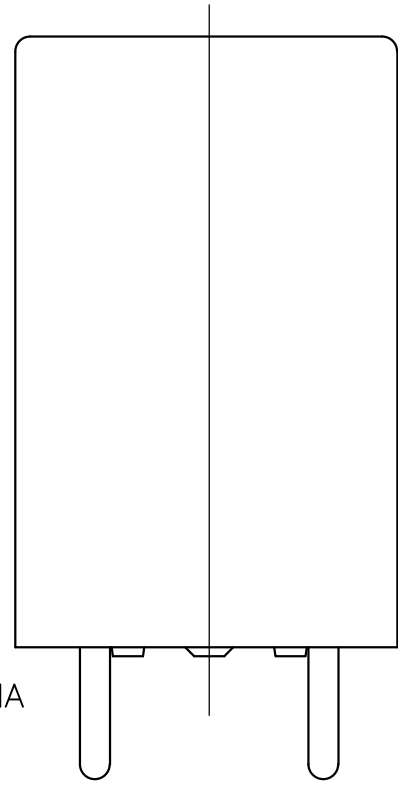
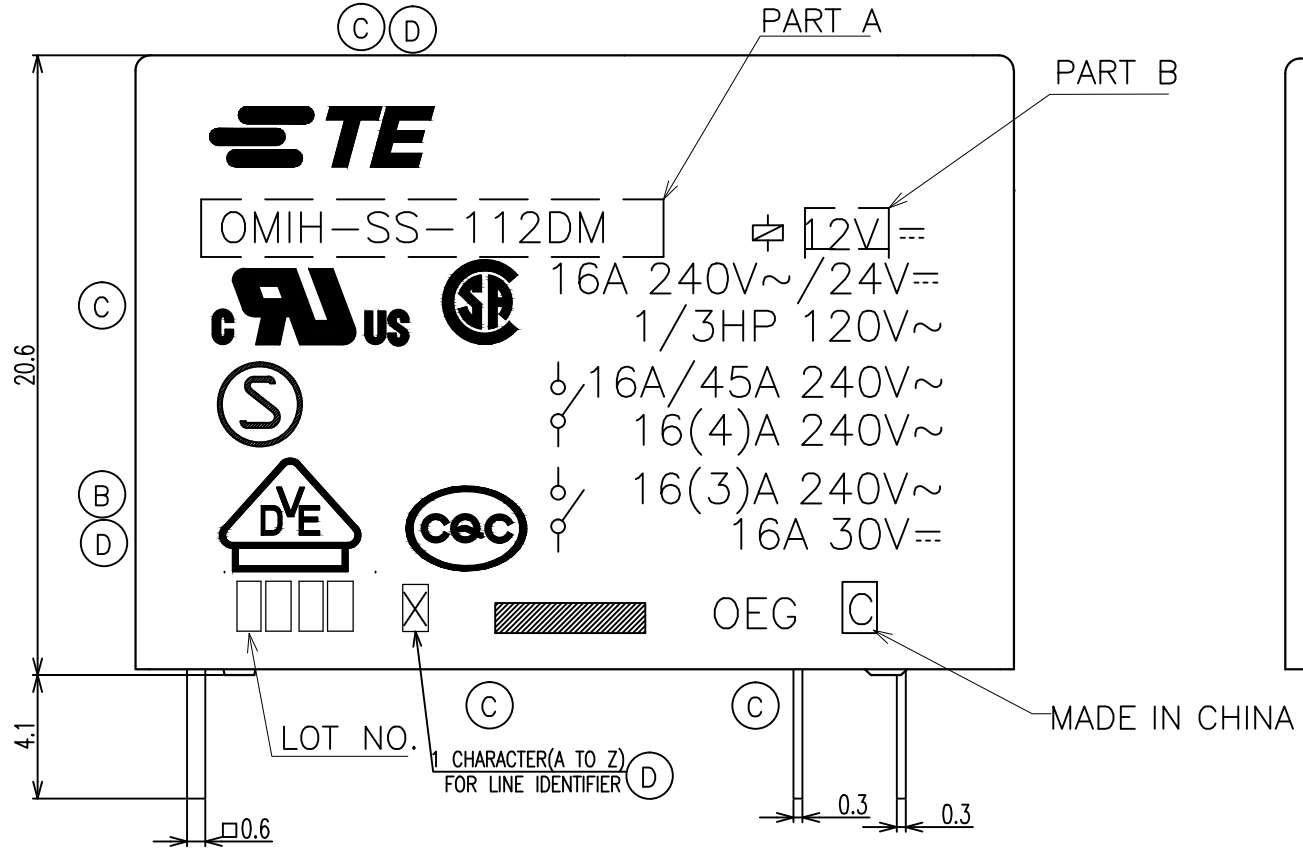
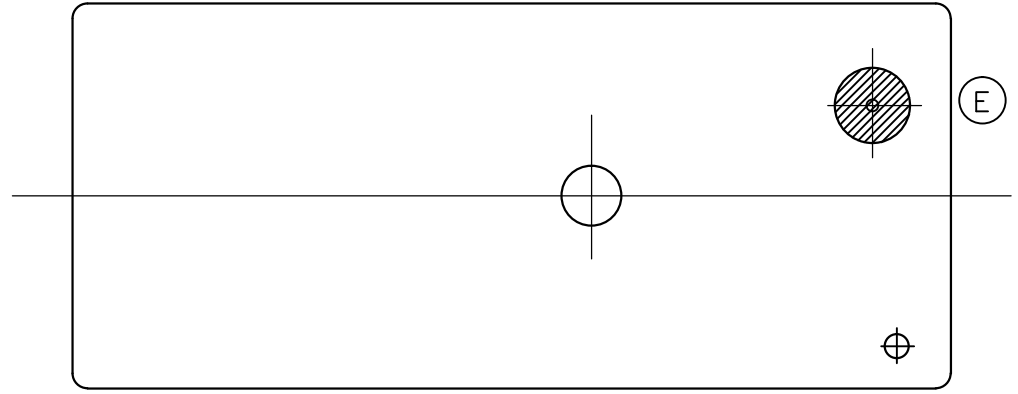
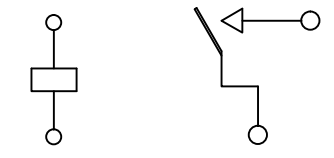


THIS DRAWING IS UNPUBLISHED. RELEASED FOR PUBLICATION  
 © COPYRIGHT - By - ALL RIGHTS RESERVED.

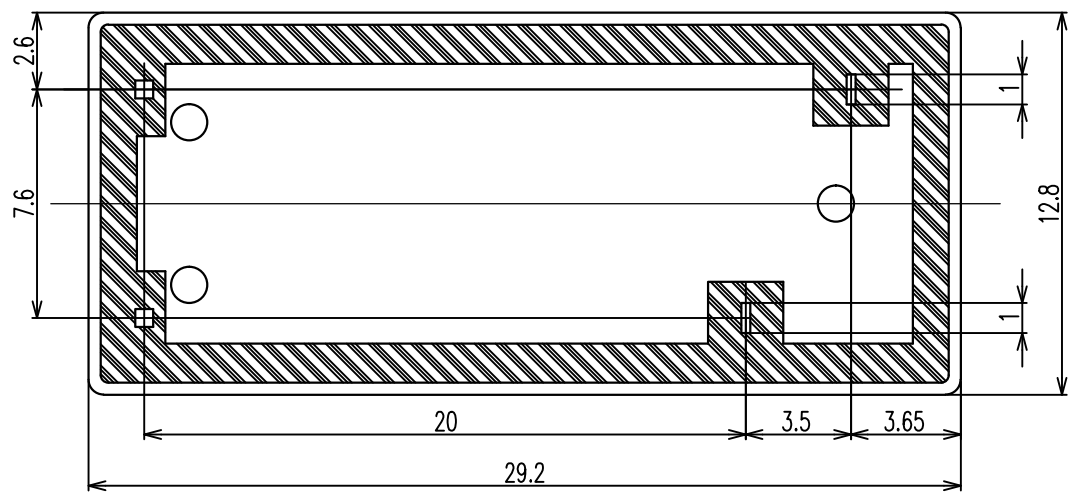
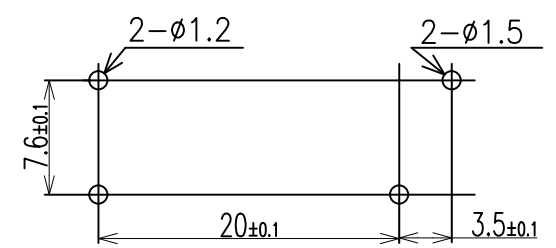
LOC		DIST		REVISIONS			
P	LTR	DESCRIPTION	DATE	DWN	APVD		
HB	-						
	D	CHANGE LOGO VENT HOLE; ADD LINE IDENTIFIER, CQC PLATING THICKNESS	ECO-12-005725	20-AUG-12	D.L	BH.Y	
	E	CHANGE THE VENT HOLE SHAPE FROM RECTANGLE TO CIRCLE ONE	ECO-13-015347	16-DEC-13	XL,Y	B,F	



CONNECTION DIAGRAM (BOTTOM VIEW)



DRILLING DIAGRAM(2/1) (BOTTOM VIEW)



THIS DRAWING IS A CONTROLLED DOCUMENT.		DWN YANG.XIAO		<b>TE</b> TE Connectivity	
DIMENSIONS: mm		CHK N.FUNAYAMA			
TOLERANCES UNLESS OTHERWISE SPECIFIED:		APVD HSU,CHIEN-HUI		NAME	
0 PLC ±-		PRODUCT SPEC		OMIH CUSTOMER DRAWING	
1 PLC ±-		APPLICATION SPEC		RESTRICTED TO	
2 PLC ±-		WEIGHT		SIZE CAGE CODE DRAWING NO	
3 PLC ±-		CUSTOMER DRAWING		A3 00779 C-2-1419153-0	
4 PLC ±-		SCALE 4:1		SHEET 1 OF 2	
ANGLES ±-		REV E			
FINISH					

THIS DRAWING IS UNPUBLISHED. RELEASED FOR PUBLICATION  
 © COPYRIGHT - By - ALL RIGHTS RESERVED.

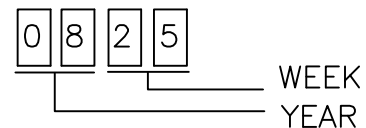
LOC	DIST	REVISIONS					
		P	LTR	DESCRIPTION	DATE	DWN	APVD
HB	-						

OMIH-SH-148LM	7-1419121-2	48V	OMIH-SH-148LM
OMIH-SH-124LM	6-1419121-9	24V	OMIH-SH-124LM
OMIH-SH-124DM	6-1419121-5	24V	OMIH-SH-124DM
OMIH-SH-118LM	2-1419153-0	18V	OMIH-SH-118LM
OMIH-SH-112LM	6-1419121-0	12V	OMIH-SH-112LM
OMIH-SH-112DM	0-1461016-1	12V	OMIH-SH-112DM
EC TYPE NAME	TE PART NAME	PART B	PART A

RELAY TYPE

NOTES:

1.LOT NO. SYSTEM AS FOLLOWING:



2.GENERAL TOLERANCE AS FOLLOWING:

TOLERANCE	
0~0.99mm	±0.1
1mm~2.99mm	±0.2
3mm MIN.	±0.3

③ 3.TERMINAL DIMENSION IS NOT INCLUDING SOLDER TIP.

④ 4.FOR THE TIN-PLATING OF THE PINS:  
 +0.1mm FOR WIDTH,THICKNESS AND DIAMETER.  
 +0.5mm FOR LENGTH.

		UV RESIN	UV SEAL	17
		EPOXY RESIN	SEAL	16
		—	TAPE	15
UL94 V-0		PBT	CASE	14
CLASS E		UEW	MAGNETIC WIRE	13
UL94 V-0		PET	BASE	12
UL94 V-0		PBT	BOBBIN	11
	SOLDER DIP	CP WIRE	COIL TERMINAL	10
UL94 V-0		PPS	CARD	9
		Ag ALLOY	MOVABLE CONTACT	8
		Ag ALLOY	STATIONARY CONTACT	7
		Cu ALLOY	HINGE SPRING	6
	SOLDER DIP	Cu ALLOY	STATIONARY TERMINAL	5
	SOLDER DIP	Cu ALLOY	MOVABLE SPRING	4
		STEEL	CORE	3
		STEEL	ARMATURE	2
		STEEL	YOKE	1
INCOMBUSTIBILITY	TREATMENT	MATERIAL	DESCRIPTION	ITEM

THIS DRAWING IS A CONTROLLED DOCUMENT.		DWN YANG.XIAO	TE Connectivity <b>OMIH CUSTOMER DRAWING</b>			
DIMENSIONS: mm		CHK N.FUNAYAMA				
TOLERANCES UNLESS OTHERWISE SPECIFIED:		APVD HSU,CHIEN-HUI	NAME			
		PRODUCT SPEC	APPLICATION SPEC			
MATERIAL		WEIGHT	SIZE	CAGE CODE	DRAWING NO	RESTRICTED TO
FINISH			A3	00779	0-2-1419153-0	
CUSTOMER DRAWING			SCALE	SHEET	REV	
			4:1	2 of 2	E	