

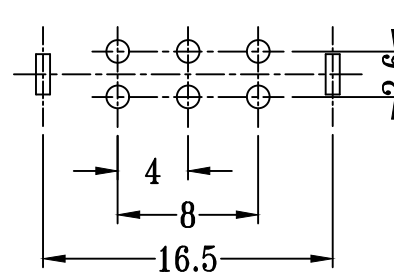
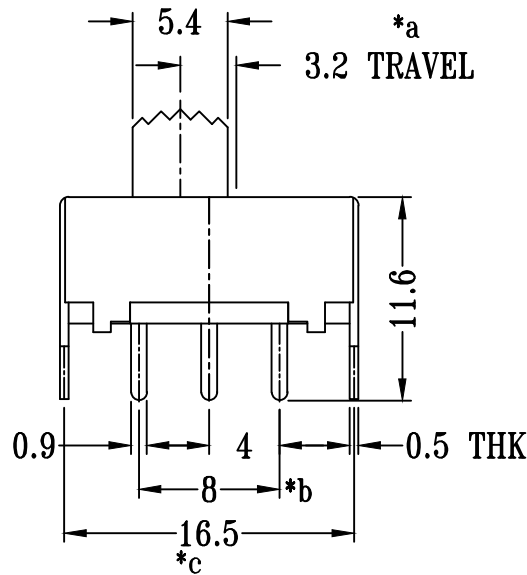
SS-22F07-GXXX

直柄

G-Switch P/N

Switch Height (mm)

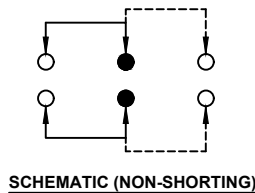
- G020=2.0 G030=3.0
- G040=4.0 G050=5.0
- G055=5.5 G060=6.0
- G065=6.5 G070=7.0
- G075=7.5 G080=8.0
- G085=8.5 G090=9.0
- G095=9.5 G100=10.0



P.C.B LAYOUT
BOTTOM VIEW

G-Switch Specification:

Electrical Specifications: 1.0A/DC24V
 Contact resistance (CR): $\leq 50m\Omega$
 Insulation Resistance(IR): $\geq 100M\Omega$ DC250V
 Compressive strength (WV): AC250V 1minute
 Operating temperature: $-25^{\circ}C \sim +70^{\circ}C$
 Storage humidity: $< 85\%RH$
 Electrical life: 10,000Cycles.



G-Switch Electronic (HongKong) CO.,Ltd.

Unless otherwise specified, Tolerance:
 X. ± 0.30
 X.x ± 0.20
 X.xx ± 0.15
 X.xxx ± 0.10
 Angles $\pm 3^{\circ}$

DESIGN FengFengChen	DATE 2019.05.29	Molde code:	
CHECKED	DATE	SS-22F07-GXXX	
APPROVED	DATE		
http://www.dg-switch.com		REV.: X1	SCALE: 4:1
TEL:0769-82388879		UNIT: mm	
SIZE: A4	SHEET: 1/1		