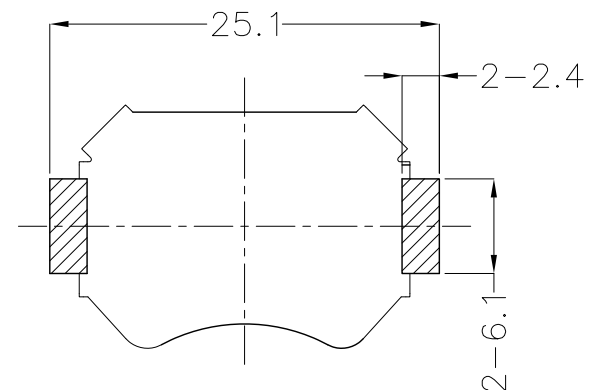
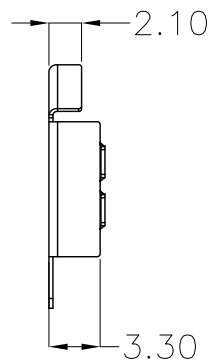
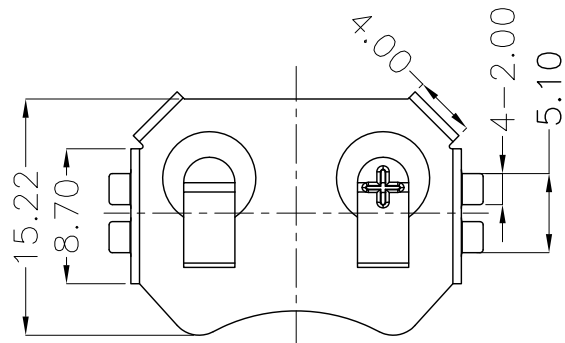
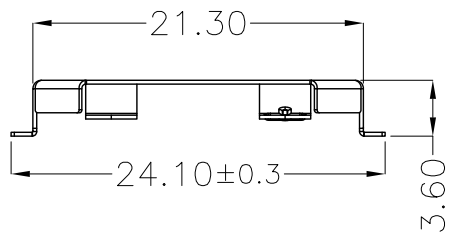




REV.	ECN NO.	REVISED	DATE



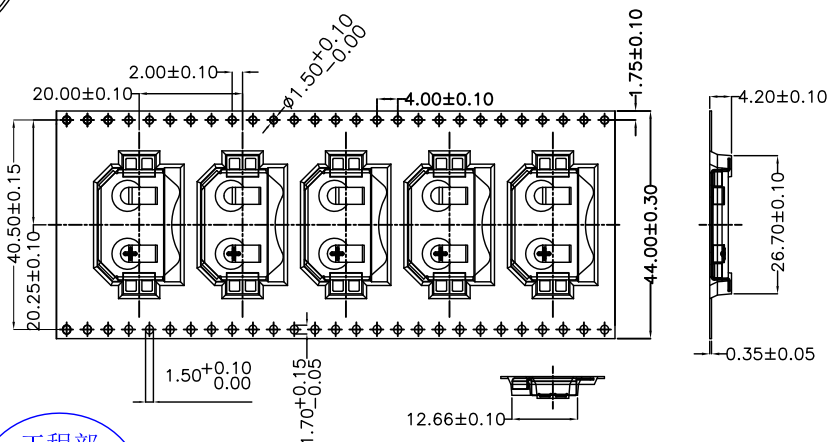
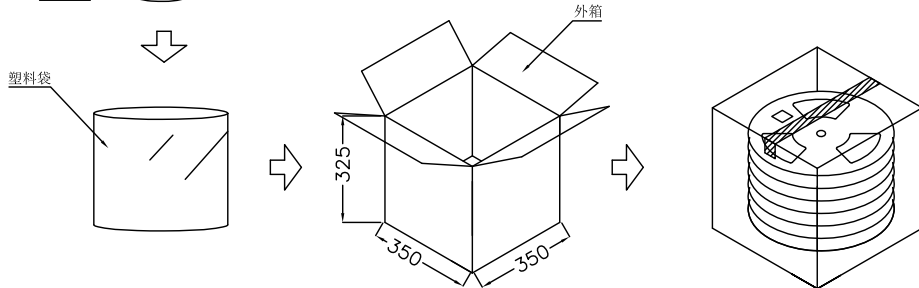
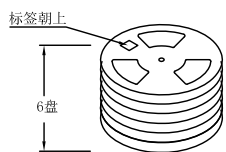
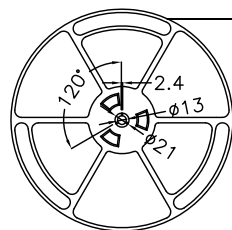
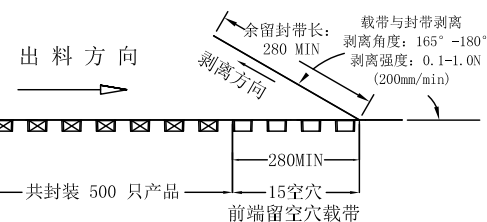
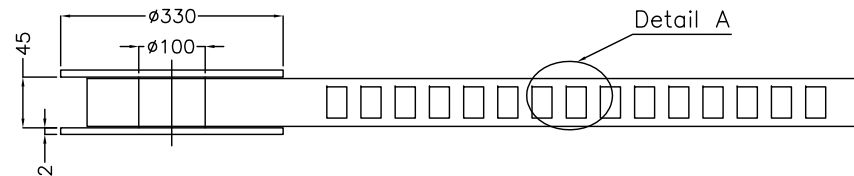
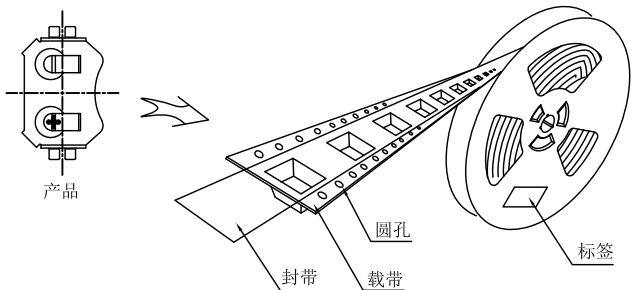
PCB Layout Diagram  
Top View



工程部  
2017-07-20  
ZW DANG

UNLESS OTHERWISE SPECIFIED TOLERANCES		<b>MYOUNG 美阳</b> <a href="http://www.meiyangdz.com">www.meiyangdz.com</a>					
DECIMALS: X : ±0.30 X.X : ±0.25 X.XX : ±0.20 X.XXX : ±0.10	ANGLES: X : ±1° X.X : ±0.5°	DSND	YangFeng	DATE	2017-07-20	TITLE:	
WEIGHT: 0.74g		CHKD	ZhouRuicai	DATE	2017-07-20	电池扣CR2032-P28(24.1)	
SHEET 1 OF 1		APVD	XueShunyong	DATE	2017-07-20	PART NO.:	
		SCALE: 2:1	SIZE: A4	VIEW:		MY-2032-12	
		UNIT: mm	REV.: A/0	OBJECT: MY	DRAW NO.:MY-CP-0120		

1	TERMINAL(+)	1	PHOSPHOR BRONZE, T=0.25mm	Ni Plating
NO.	PART NAME	Q'TY	MATERIAL	PLATING & COLOR



工程部  
2020-08-26  
H. WANG

技术要求:

1. 圆孔十个孔距离累计允许公差为±0.2mm
2. 带长250mm内容许弯曲度1mm
3. 材料厚度以在载带边缘测量为准
4. 所有尺寸定义依循EIA-481-C系准则定义之
5. 材料: 黑色PS T=0.35mm
6. 所有卷轮为灰蓝挖空旋转塑胶卷轮
7. 整模成型长度:12.576M,
8. 非指明公差范围为: ±0.1mm; 超过250mm不计算累计误差
9. 型腔外形凡未标明处倒角R为0.2-0.3; 拔模斜度未标注的为3° 以下

包装信息:

- 1、每卷盘装产品 500 只, 卷盘外侧贴相关标签;
- 2、每 6 卷盘放在一个塑料袋中;
- 3、每外箱装6盘, 产品总数: 3000 只;
- 4、外箱上下用胶纸封成“工”字;
- 5、净重: 2.3 KG, 毛重: 6.3 KG.

UNLESS OTHERWISE SPECIFIED TOLERANCES		<b>MYOUNG 美阳</b> www.meiyangdz.com					
DECIMALS: X :±*** X.X :±*** X.XX :±*** X.XXX :±***	ANGLES: X :±*** X.X :±***	DSND	YangFeng	DATE	2020-08-26	TITLE:	电池扣CR2032-P28 SMT卷装
WEIGHT:		CHKD	ZhouRuicai	DATE	2020-08-26	PART NO.:	MY-2032-**-R
SHEET 1 OF 1		APVD	XueShunyong	DATE	2020-08-26	VIEW:	⊙ ⊞
		SCALE:	SIZE: A4	REV.:	A/0	OBJECT:	MY
		UNIT: mm	REV.:	A/0	OBJECT:	MY	DRAW NO.:MY-BD-0020