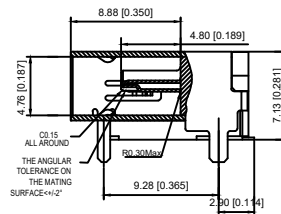
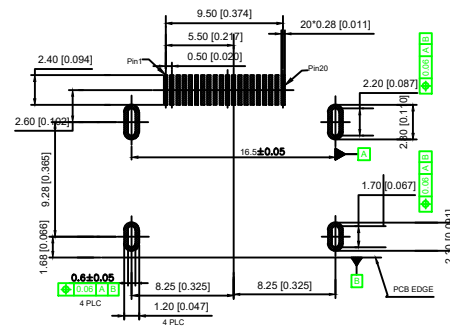
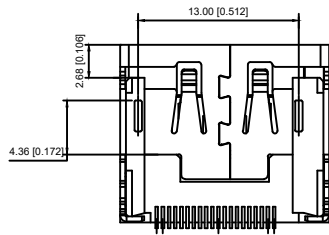
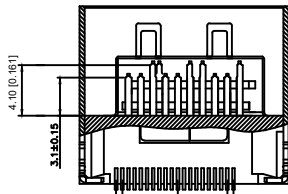
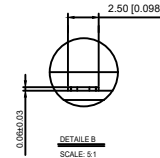


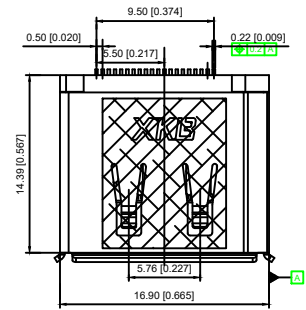
F: Flat



SECTA-A



DETAIL B  
SCALE: 5:1



S:Scrolls

NOTES:

- MATERIAL:  
HOUSING: THERMOPLASTIC HIGH TEMP WITH 30% GF  
(PA10T R630NH / LCP E130, E471 OR 8607LHF) LLS94V-0.  
CONTACT: C2889R-EH T=0.20mm  
SHELL: C2889R-H T=0.40mm  
MYLAR: KAPTON TAPE T=0.08mm
- PLATING:  
CONTACT: 10μ" MIN. GOLD PLATING ON CONTACT AREA  
GOLD FLASH PLATING OVER ALL  
SHELL: 50-50μ" NICKEL PLATING OVERALL.
- SOLDERAL COPLANARITY 0.10MAX.
- PART NO. DESCRIPTION

CAR02-201ENXX

- DISPLAY PORT
- POS NO.: 20/20 POS.
- HOUSING COLOR: 1-BLACK
- CONTACT PLATING: E-Au30μ+MATTIE TIN
- SHELL PLATING: N-NICKEL PLATING
- PACKAGE: 2+TAPE REEL
- TAPE REEL-MYLAR: S-TAPE REEL-MYLAR
- Interface type: S:Scrolls, F:Flat

						DSND		DATE		SCALE: N/A	MODEL TYPE: DP CONNECTOR	
						DWN		DATE		VIEW:	PART NO.:	
						CHKD		DATE		UNIT: mm/in	DWG NO.:	
						APPD		DATE		SIZE: A4	CAR02-201ENXX	
MARK	DESCRIPTION	DATE	REVISED	APPROVED	UNSPECIFIED TOLERANCES				XKB INDUSTRIAL PRECISION CO., LIMITED	WEIGHT	SHEET	REVISION
	REVISIONS									1.0g	1/1	A0
www.xk-dg.cn www.helloxkb.com www.helloxkb.cn												