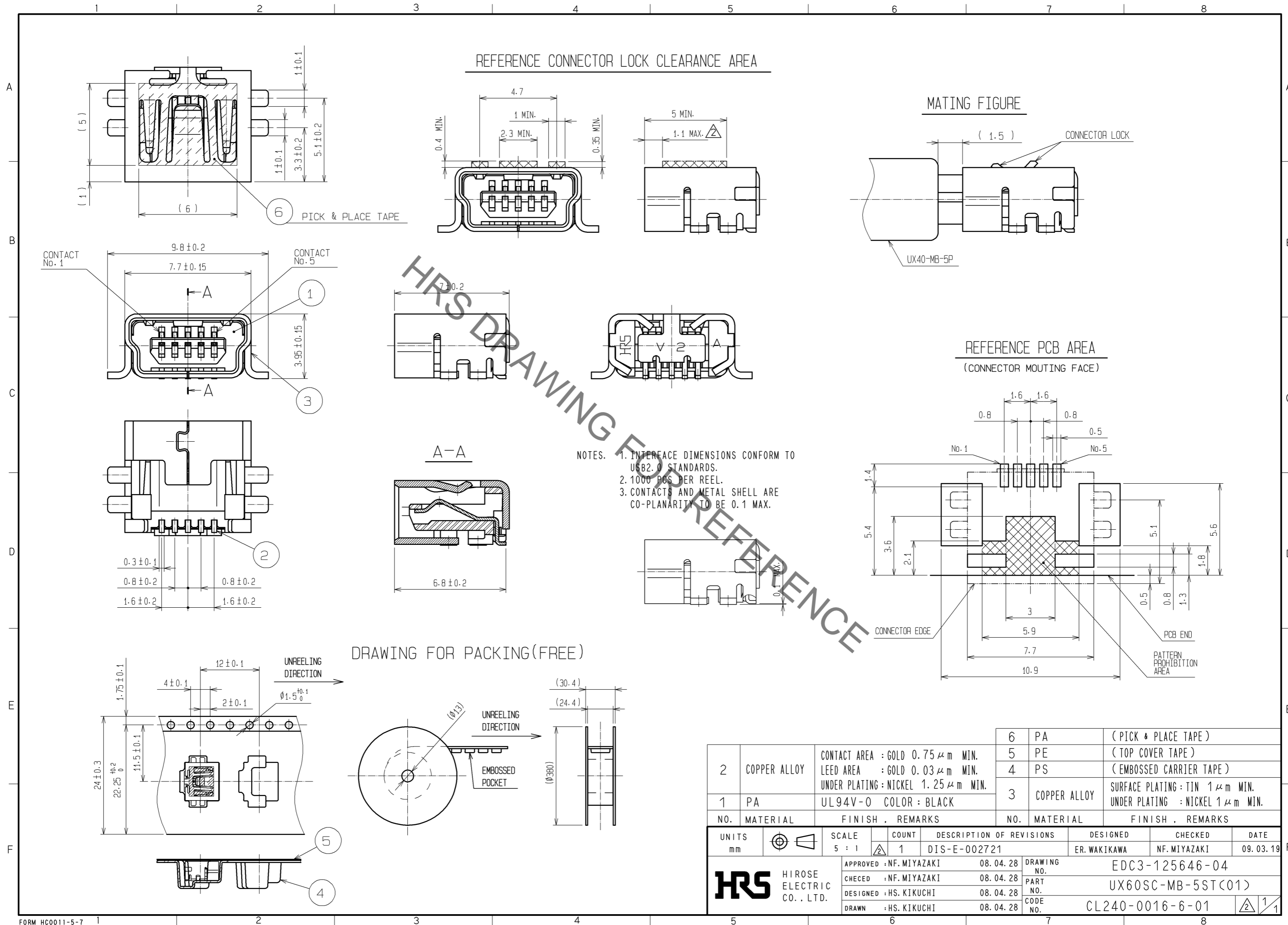


Oct.1.2021 Copyright 2021 HIROSE ELECTRIC CO., LTD. All Rights Reserved.
In case of consideration for using Automotive equipment / device which demand high reliability, kindly contact our sales window correspondents.



NO.	MATERIAL	FINISH .	REMARKS	NO.	MATERIAL	FINISH .	REMARKS
2	COPPER ALLOY		CONTACT AREA : GOLD 0.75 μm MIN. LEED AREA : GOLD 0.03 μm MIN. UNDER PLATING : NICKEL 1.25 μm MIN.	6	PA		(PICK & PLACE TAPE)
1	PA	UL94V-0	COLOR : BLACK	5	PE		(TOP COVER TAPE)
				4	PS		(EMBOSSED CARRIER TAPE)
				3	COPPER ALLOY		SURFACE PLATING : TIN 1 μm MIN. UNDER PLATING : NICKEL 1 μm MIN.

UNITS	SCALE	COUNT	DESCRIPTION OF REVISIONS	DESIGNED	CHECKED	DATE
mm	5 : 1	1	DIS-E-002721	ER.WAKIKAWA	NF.MIYAZAKI	09.03.19

APPROVED	DATE	DRAWING NO.
NF.MIYAZAKI	08.04.28	EDC3-125646-04
CHECED	DATE	PART NO.
NF.MIYAZAKI	08.04.28	UX60SC-MB-5ST(C1)
DESIGNED	DATE	CODE NO.
HS.KIKUCHI	08.04.28	CL240-0016-6-01
DRAWN	DATE	
HS.KIKUCHI	08.04.28	