

Common Mode Choke CUW Series

**Automotive
AEC-Q200**

RoHS Compliant
Halogen Free
REACH Compliant



- Noise Suppression
- Unshield
- Wire Wound
- Ferrite
- General Signal line

Part Numbering

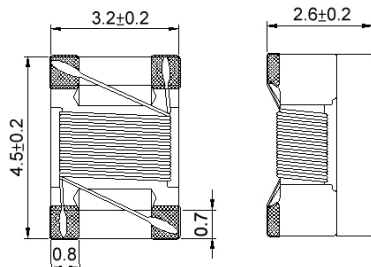
CUW	43	T	-	513	T	-	AU
Series Name	Dimensions Code (mm)	Category		Inductance (uH)	Tolerance		Internal Code
	43 4.5x3.2x2.6	T		513 51	T ±30%		
		M		104 100			

Common Mode Choke CUW Series

**Automotive
AEC-Q200**

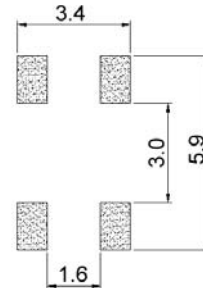
CUW43T - AU Type

■ Dimensions



unit:mm

■ Recommended Land Pattern



unit:mm

■ Electrical Characteristics

Part No.	Inductance (uH)	Test Freq.	Impedance (Ω)Min. (Ω)Typ.	Test Freq. (MHz)	RDC (Ω)Max.	Irms (mA)Max.	Rated Voltage (Vdc)Max.	Withstand Voltage (Vdc)	Insulation Resistance (MΩ)Min.	Tol. (±%)
CUW43T-113□-AU	11	100kHz,0.1V	300 600	10	0.6	250	50	125	10	30
CUW43T-223□-AU	22	100kHz,0.1V	500 1200	10	1	200	50	125	10	30
CUW43T-513□-AU	51	100kHz,0.1V	1000 2800	10	1	200	50	125	10	30
CUW43T-104□-AU	100	100kHz,0.1V	2000 5800	10	2	150	50	125	10	30

Note: When ordering, please specify tolerance code. Tolerance: T=±30%

- Operating temperature range - 40°C ~ 125°C(Including self - temperature rise)
- RDC: SINGLE WIRE TEST VALUE
- Irms for 40°C rise above 25°C ambient.
- Measure Equipment:
 Z: HP4286A / HP4287A / AgilentE4991A
 L: HP4284A+HP42841A/HP4285A+HP42841A
 RDC: CHROMA MILLIOM METER MODE 16502
 Irms: HP4284A+HP42841A/HP4285A+HP42841A
 Insulation Resistance: HP4339B

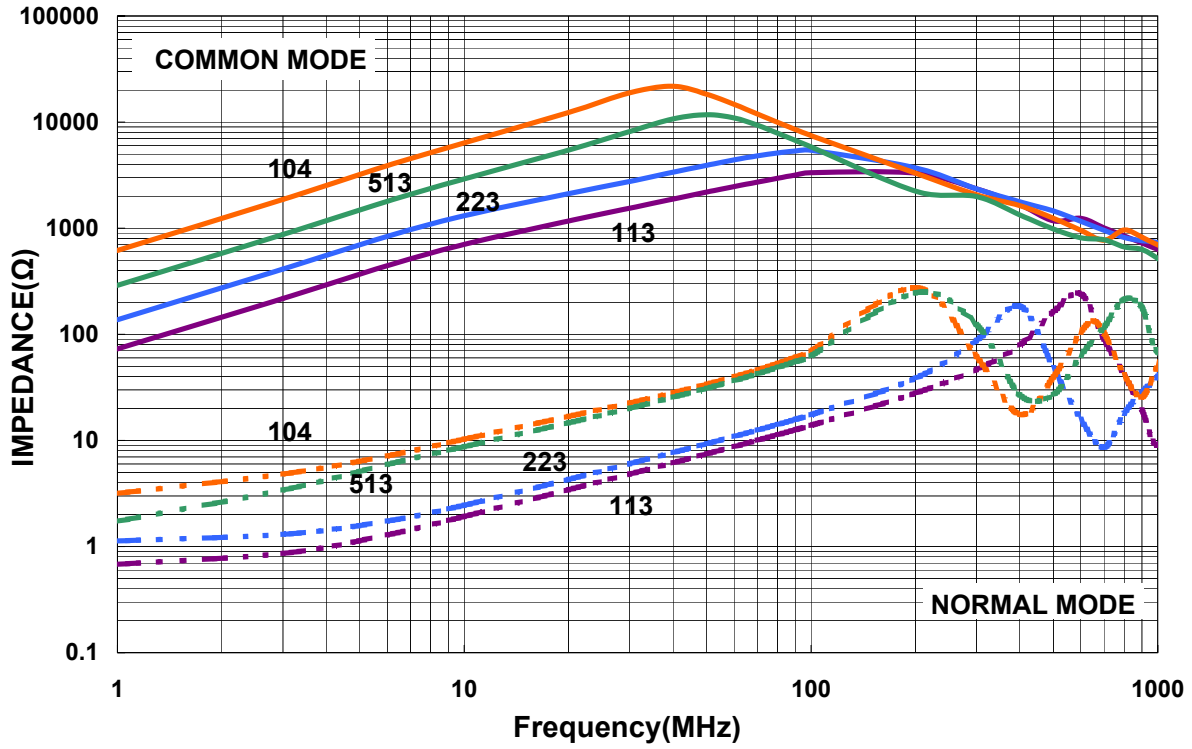
Common Mode Choke CUW Series

**Automotive
AEC-Q200**

CUW43T - AU Type

Characteristics Graph

Typical Impedance vs. Frequency Characteristics



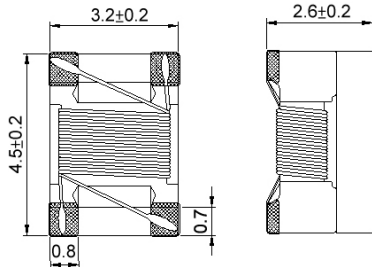
"Please be sure to request approval specifications that provide further details of the products. Kindly note that the content of these specifications are subject to change or may be discontinued without advance notice. Please contact our sales department before ordering."

Common Mode Choke CUW Series

**Automotive
AEC-Q200**

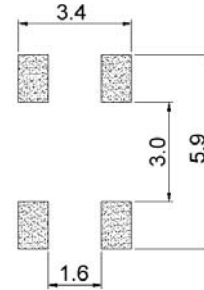
CUW43M - AU Type

■ Dimensions



unit:mm

■ Recommended Land Pattern



unit:mm

■ Electrical Characteristics

Part No.	Inductance (uH)	Test Freq.	RDC (Ω)Max.	I _{rms} (mA)Max.	Rated Voltage (Vdc)Max.	Withstand Voltage (Vdc)	Insulation Resistanc (MΩ)Min.	Tolerance (±%)
CUW43M-113□-AU	11	100kHz,100mV	0.5	360	50	125	10	30
CUW43M-223□-AU	22	100kHz,100mV	0.6	310	50	125	10	30
CUW43M-513□-AU	51	1MHz,200mV	1	230	50	125	10	30
CUW43M-104□-AU	100	1MHz,200mV	2	200	50	125	10	30

Note: When ordering, please specify tolerance code. Tolerance: T=±30%

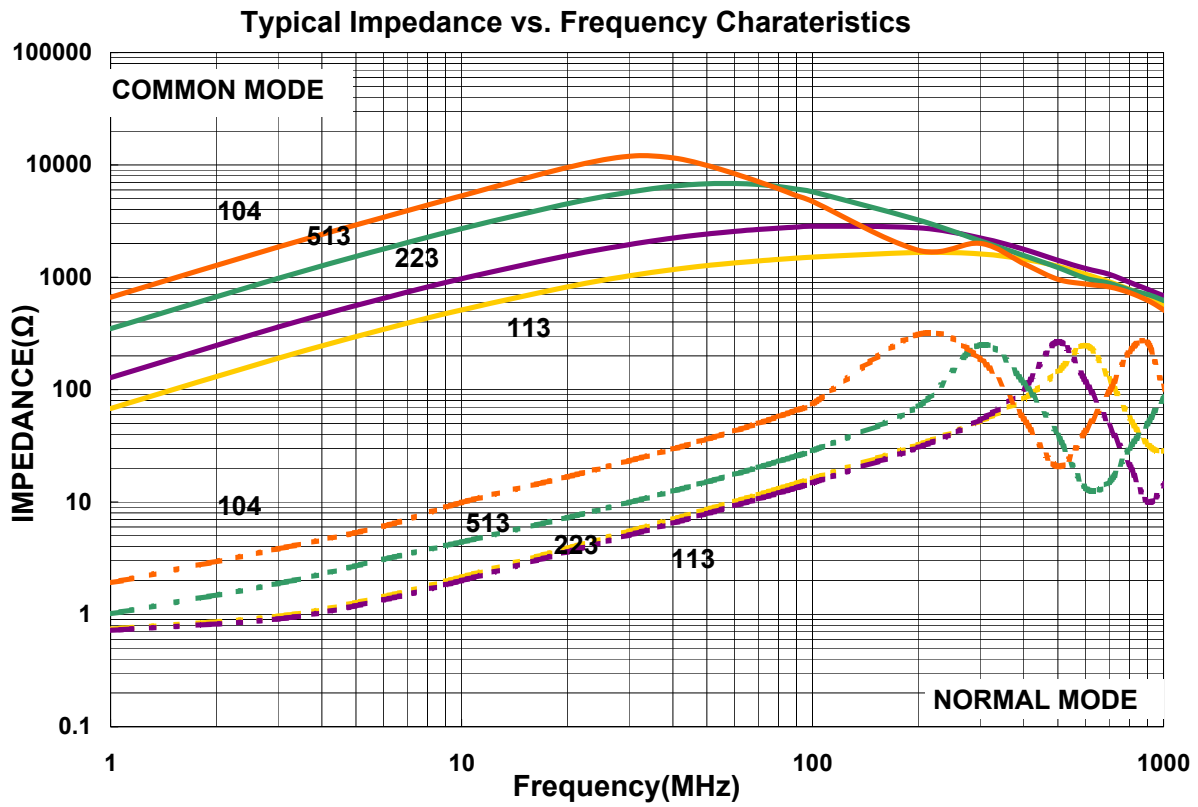
1. Operating temperature range - 40°C ~ 125°C(Including self - temperature rise)
2. RDC: SINGLE WIRE TEST VALUE
3. I_{rms} for 40°C rise above 25°C ambient.
4. Measure Equipment:
 L: HP4284A+HP42841A/HP4285A+HP42841A
 RDC: CHROMA MILLIOM METER MODE 16502
 I_{rms}: HP4284A+HP42841A/HP4285A+HP42841A
 Insulation Resistance: HP4339B

Common Mode Choke CUW Series

Automotive
AEC-Q200

CUW43M - AU Type

■ Characteristics Graph

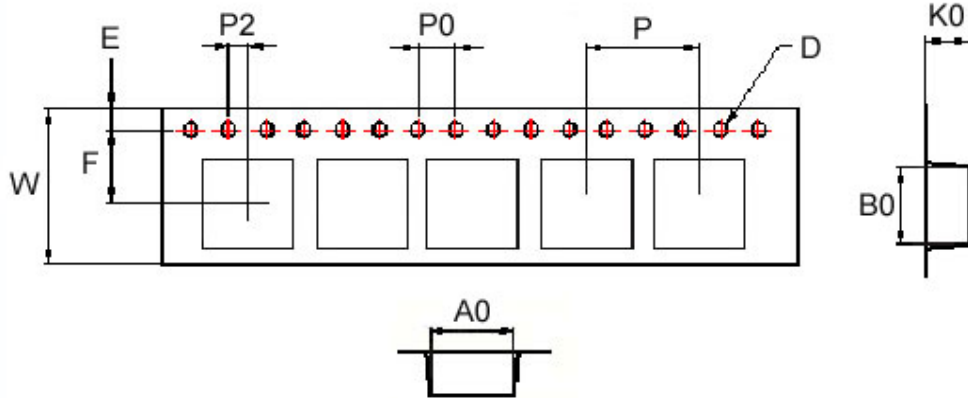


Common Mode Choke CUW Series

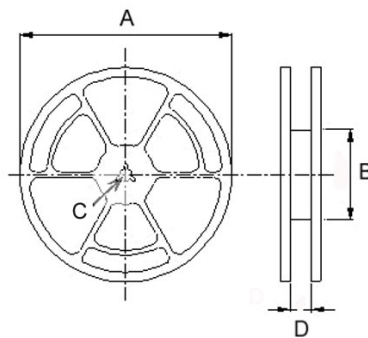
**Automotive
AEC-Q200**

■ Packaging

Tape Dimensions



Reel Dimensions



Dimensions in mm

TYPE	Tape Dimensions										Reel Dimensions				Quantity
	A0	B0	K0	D	E	F	W	P	P0	P2	A	B	C	D	PCS / REEL
CUW43	3.6	4.9	2.7	1.5	1.75	5.5	12	8	4	2	330	100	13	13.4	2500