

NOTES:

UL Standard

1. Rated Voltage/Current : 300V / 10A
2. Withstanding Voltage : AC1500V/1Min.
3. Contact Resistance : 20mΩ Max
4. Wire Range : 22~14AWG

NOTES:

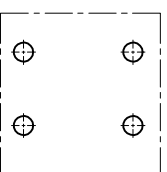
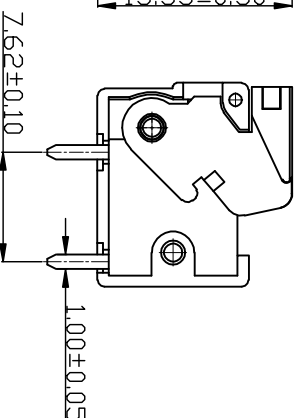
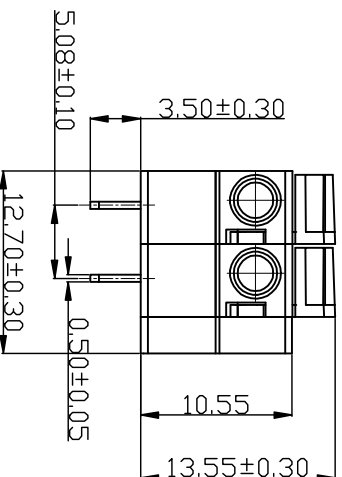
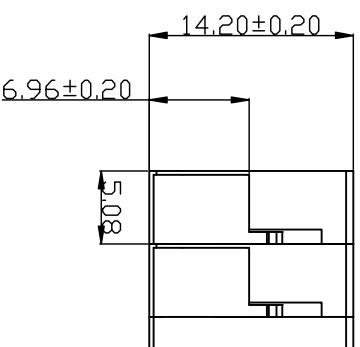
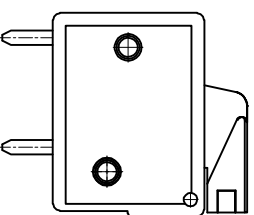
1. Dimension shall be interpreted per ASME Y14.5-2009
2. Pitch : 5.08mm, Poles : N=02P
3. Stripping length : 8-10mm
4. Operating temperature : -40°C~+105°C
5. Undimensioned Tolerances:

Pitch range in mm	Nominal dimension range in mm	Tolerance	
		—	∠
≤8	8 ~ 16	≤6	∠
±0.08	16 ~ 24	30 ~ 90	∠
		90 ~ 200	∠
		200 ~ 480	∠
		±1	

Ordering Information

JL142R - 508 02 G A 1

Pitch 508=5.08PH No. of pins 2P~24P Housing Color B=Black G=Green U=Blue R=Red W=White Y=Yellow D=Drange E=Grey
Packing 0=Pe bag A=Tray T=Tube



Recommended P.C.B Layout

REVISION RECORD			
REV	ECN	DESCRIPTION	DATE

DRAWN	LICHIAO LIU		SCALE	FIT	PART NO.	JL142R-50802GA1
CHECK	LICHIAO LIU		UNIT	mm		
APPROVE	高永亮		SIZE	A4	TITLE:	JL142R-508-2P 弹簧式/绿色/盒装
			SHEET	1/1		

JILIN 东莞市锦凌电子有限公司
DONGGUAN JILIN ELECTRONIC CO., LTD