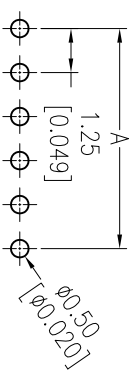
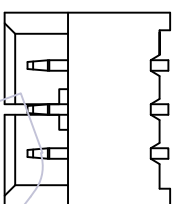
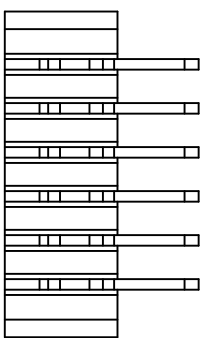


# HSF

Recommended P.C.B Layout(Top Side)  
(PCB BOARD TOLERANCE±0.05)

**NOTES:**

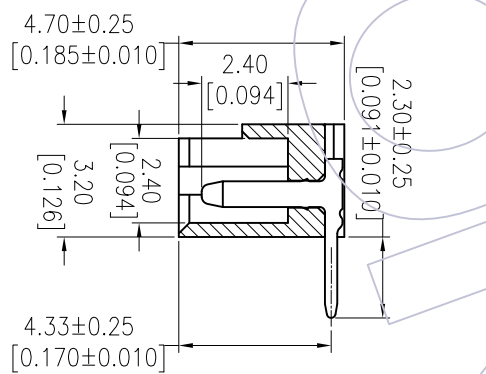
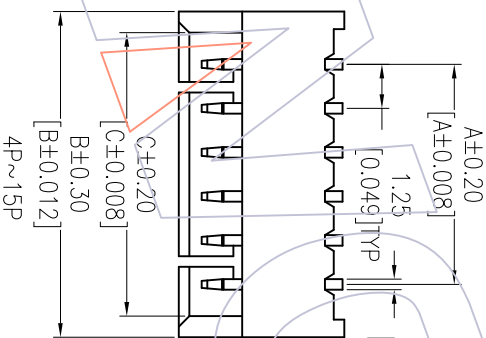
- Rated Voltage:100V AC/DC
- Rated Current:1.0AMP
- Contact Resistance:20mΩ max
- Withstand Voltage:500V AC/DC
- Insulation Resistance:100MΩ min
- Operation Temperature:-25℃ to +85℃
- Contact Material:Brass
- Contact plating:Au Or Sn Over Ni
- Insulator Material:PA6T+30%G.F UL94V-0



## Ordering Information

WF1251 - WR XX XX I

- No.of pins Contact Plating
- 02-15P S0=Gold Flash/Tin
- S3=10u"Gold/Tin
- S4=15u"Gold/Tin
- S5=30u"Gold/Tin
- G0=Gold Flash
- G3=10u"Gold
- G4=15u"Gold
- G5=30u"Gold
- Blank=Tin
- Color W=Natural
- A=Tray
- T=Tube
- R=Tube&Reel
- Packing



### Specification & Ordering Information:

Circuit	Part No.	Dimension			
		A	B	C	
02	WF1251-WR02XX1	1.25	4.25	3.05	1,000
03	WF1251-WR03XX1	2.50	5.50	4.30	1,000
04	WF1251-WR04XX1	3.75	6.75	5.55	1,000
05	WF1251-WR05XX1	5.00	8.00	6.80	500
06	WF1251-WR06XX1	6.25	9.25	8.05	500
07	WF1251-WR07XX1	7.50	10.50	9.30	300
08	WF1251-WR08XX1	8.75	11.75	10.55	300
09	WF1251-WR09XX1	10.00	13.00	11.80	300
10	WF1251-WR10XX1	11.25	14.25	13.05	300
11	WF1251-WR11XX1	12.50	15.50	14.30	200
12	WF1251-WR12XX1	13.75	16.75	15.55	200
13	WF1251-WR13XX1	15.00	18.00	16.80	200
14	WF1251-WR14XX1	16.25	19.25	18.05	200
15	WF1251-WR15XX1	17.50	20.50	19.30	200

REV	DATE	MODIFICATION DESCRIPTION	CHANGE	OPERATION		DRAW	DATE	SCALE		PART NO.
				Angle	DIM			UNIT	FIT	
A2	2014/07/11	Modify The Color:W=Natural	---	X.X	±0.40	JYHuang	2014/07/11	mm	1/1	SEE TAB
A1	2014/03/13	Modify The Material:PA9T--PA6T	---	X.XX	±0.25	CHECK	DATE	A4		TITLE: "M"TYPE1.25 Wafer 90° DIP
AO	2012/08/24	NEW	---	X.XXX	±0.15	APPROVE	DATE	1/1		Customer NO.

# WCON

Http: www.wcon.com

WCON-Dongguan Tel: +86 769 85358920 Fax: +86 769 85358915 E-mail: sales@wcon.com

WCON-Kunshan Tel: +86 512 57468408 Fax: +86 512 57468468 E-mail: sales@wcon.com