

SPECIFICATIONS

PCI-E Connector

Mechanical

Contact Retention Force: 0.50Kg min. per contact
Durability: 50 Cycles
Insertion Force(Conn. Into PCB): 0.117Kg max.
Unmating Force(Per Contact pair): 0.154Kg min.

2EG0 Series

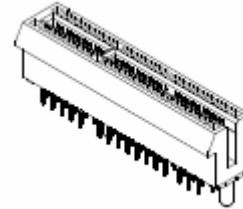
T/H Type

1.00mm [.039"] Pitch

36 Pos.

Electrical

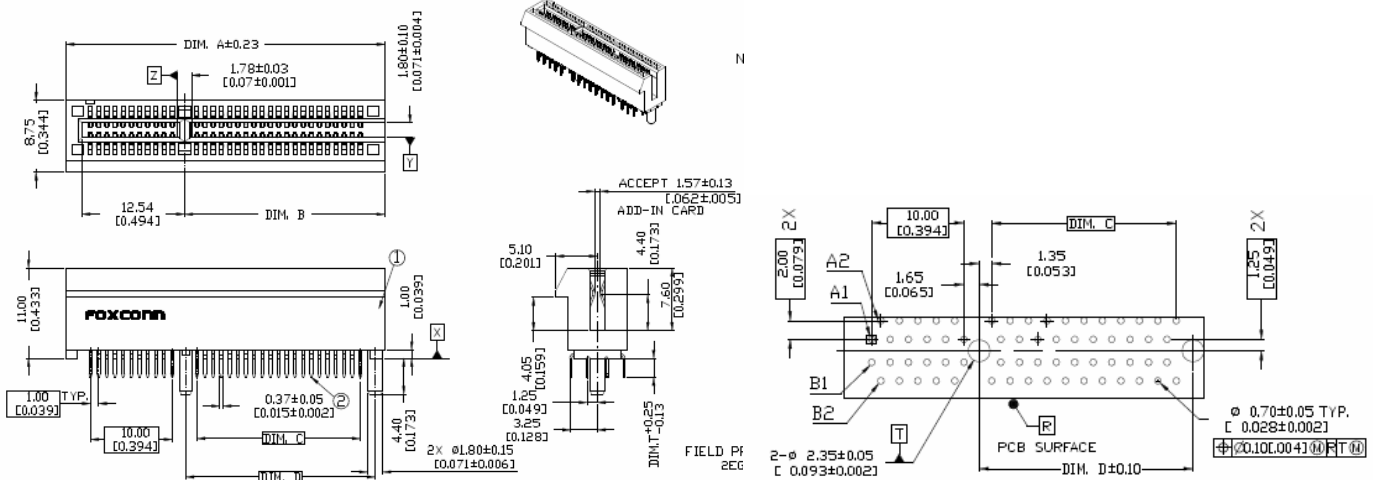
Current Rating: 1.1 Amps per pin max.
Insulation Resistance: 1000MΩ min. at 500V DC
Dielectric Withstanding Voltage: Apply 500VAC for 1 minute between adjacent terminals of an unmated connector. No breakdown.
Low Level Contact Resistance: 30mΩ max. initial, Change not greater than 20mΩ Max.



Physical

Housing: Thermoplastic, UL 94V-0 rated in Black Color
Contact: Copper alloy
Operating Temperature: -40 °C to +105 °C

DRAWING



ORDERING INFORMATION

PROD. NO.: 2EG 0 ** * - D2*B- **

FIELD PRODUCT SERIES: 2EG= PCI EXPRESS

TERMINAL TYPE: 0= VERTICAL TYPE

NO. OF POS.:

- 18= 36 POSITIONS
- 32= 64 POSITIONS
- 49= 98 POSITIONS
- 82= 164 POSITIONS

EXTENSION CODE:

- D = BLACK
- W = WHITE
- L = BLUE

CONTACT AREA GOLD PLATING:

- 1= GOLD FLASH
- 7= 15u" GOLD
- 3= 30u" GOLD

PLATING TYPE: DF= LEAD FREE

TAIL LENGTH:

- 1= 2.30mm
- 2= 3.10mm

PRODUCT NUMBER	DIM. A	DIM. B	DIM. C	DIM. D
2EG082**-D2*B-**-	89.00[3.504]	74.50[2.933]	70.00[2.756]	73.15[2.880]
2EG049**-D2*B-**-	56.00[2.205]	41.50[1.634]	37.00[1.457]	40.15[1.581]
2EG032**-D2*B-**-	39.00[1.535]	24.50[0.965]	20.00[0.787]	23.15[0.911]
2EG018**-D2*B-**-	25.00[0.984]	10.50[0.413]	6.00[0.236]	9.15[0.354]