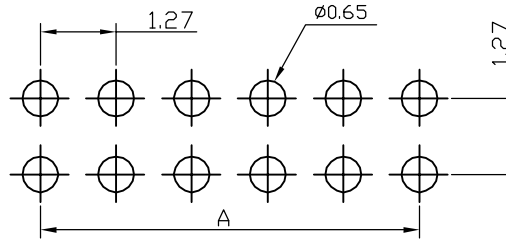
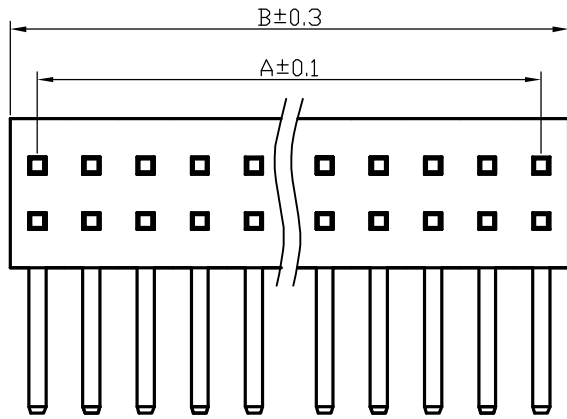
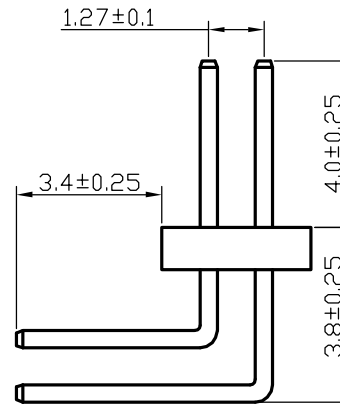
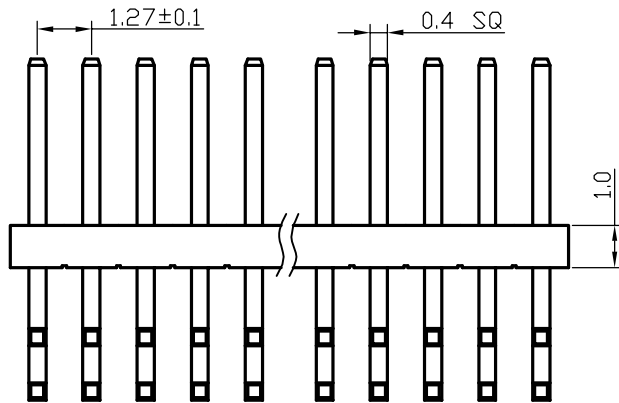


Kinghelm®



RECOMMEND P.C.B LAYOUT
PCB TOLERANCE: ±0.05 (TOP VIEW)



SPECIFICATIONS

- Current Rating: 1.0 Amps
- Withstanding Voltage: AC 500V
- Insulation Resistance: 1000MΩ Min
- Contact Resistance: 20 mΩ Max
- Operation Temperature: -40 ° to+105 °
- Insulator Material: Polyester (UL94V-0)
- Contact Material: Brass
- Standard: PA6T
- Contact Plating: Gold Flash
- Max. Processing Temp: 240 ° C for 30-60seconds
(260 ° C for 5seconds)

- (1) Pin Spacing: 127=1.27mm
- (2) Product Name: PH=Pin Header
- (3) No. of Rows: 1=Single Row; 2=Dual Row
- (4) No. of Pins Per Row: 1~50
- (5) Insulator Material Height: 10=1.0mm; 15=1.5mm
- (6) Connector Type: S=Straitght; R=Right Angle; M=SMT
- (7) Contact Material Length: 72=7.2mm; 105=10.5mm
- (8) No. of Insulator Material: 1=1PCS; 2=2PCS
- (9) Contact Plating: G0=Gold Flash; AU15=Au 1.5u"
- (10) Insulator Material Option:
A=BK-PA6T; B=BK-PA46; C=KB-LCP; S=Special

深圳市金航标电子有限公司

WWW.BDS666.COM

KH-1.27PH90-2X10P-L10.5

0755-83044319

UNLESS OTHERWISE SPECIFIED TOLERANCE
X : ±0.3 X° : ±5°
X.X : ±0.2 X.X° : ±1°
X.XX : ±0.1 X.XX° : ±0.5°

DRAWM NAME: 1.27PH 2xNPin H1.0 90° L10.5/13.0

SIZE	A4	SCALE	N:1	PROUCT NO.
REV	A	UNIT	mm	PROJECT

CHECKED: LI BEI LIN 12/03/07 CHECKED: / / APPROVED: / /

No.of	DIM.A	DIM.B	No. of	DIM.A	DIM.B	No. of	DIM.A	DIM.B	No. of	DIM.A	DIM.B	No. of	DIM.A	DIM.B
1	—	—	11	12.70	13.97	21	25.40	26.67	31	38.10	39.37	41	50.80	52.07
2	1.27	2.54	12	13.97	15.24	22	26.67	27.94	32	39.37	40.64	42	52.07	53.34
3	2.54	3.81	13	15.24	16.51	23	27.94	29.21	33	40.64	41.91	43	53.34	54.61
4	3.81	5.08	14	16.51	17.78	24	29.21	30.48	34	41.91	43.18	44	54.61	55.88
5	5.08	6.35	15	17.78	19.05	25	30.48	31.75	35	43.18	44.45	45	55.88	57.15
6	6.35	7.62	16	19.05	20.32	26	31.75	33.02	36	44.45	45.72	46	57.15	58.42
7	7.62	8.89	17	20.32	21.59	27	33.02	34.29	37	45.72	46.99	47	58.42	59.69
8	8.89	10.16	18	21.59	22.86	28	34.29	35.56	38	46.99	48.26	48	59.69	60.96
9	10.16	11.43	19	22.86	24.13	29	35.56	36.83	39	48.26	49.53	49	60.96	62.23
10	11.43	12.70	20	24.13	25.40	30	36.83	38.10	40	49.53	50.80	50	62.23	63.50