

# GS2AA THRU GS2MA (S2AA THRU S2MA) General Purpose Rectifier

## Features

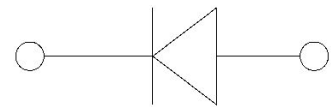
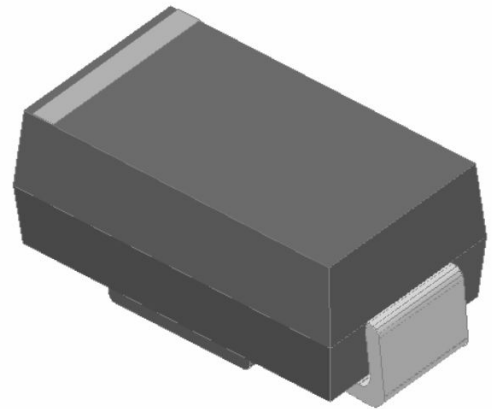
- High efficiency
- High current capability
- High reliability
- High surge current capability
- Low power loss
- Glass passivated chip junction
- Solder dip 265 °C max.10 s, per JESD 22-B106

## Typical Applications

For use in general purpose rectification of power supplies, inverters, converters, and freewheeling diodes for consumer, and telecommunication.

## Mechanical Data

- Package:SMA
- Molding compound meets UL 94 V-0 flammability rating, RoHS-compliant
- Terminals: Tin plated leads, solderable per J-STD-002 and JESD22-B102
- Polarity:Color band denotes cathode end



## ■ Maximum Ratings (Ta=25°C Unless otherwise specified)

PARAMETER	Symbol	Unit	GS2XA(S2XA)						
			A	B	D	G	J	K	M
Maximum Repetitive Peak Reverse Voltage	V <sub>RRM</sub>	V	50	100	200	400	600	800	1000
Maximum RMS Voltage	V <sub>RMS</sub>	V	35	70	140	280	420	560	700
Maximum DC blocking Voltage	V <sub>DC</sub>	V	50	100	200	400	600	800	1000
Average Forward Current @Half-sine wave, Resistance load, Tc(Fig.1)	I <sub>o</sub>	A	2						
Forward Surge Current (Non-repetitive) @60HZ sine wave, 1 cycle, Ta=25°C	I <sub>FSM</sub>	A	50						
Current squared time @1ms≤t8.3≤ms Ta=25°C, Rating of per diode	I <sup>2</sup> t	A <sup>2</sup> s	10.4						
Thermal Resistance(Typical) @Between junction and ambient	R <sub>θJ-A</sub>	°C/W	53						
Storage Temperature	T <sub>stg</sub>	°C	-55 ~ +150						
Junction Temperature	T <sub>j</sub>	°C	-55 ~ +150						

## ■ Electrical Characteristics (Ta=25°C Unless otherwise specified)

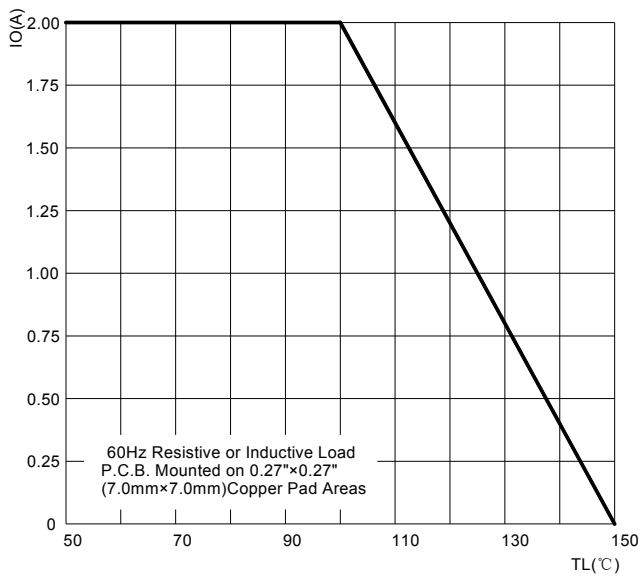
PARAMETER	Symbol	Unit	Conditions	GS2XA(S2XA)						
				A	B	D	G	J	K	M
Peak Forward Voltage	V <sub>FM</sub>	V	I <sub>F</sub> =2.0A	1.15						
Peak Reverse Current	I <sub>RRM</sub>	μA	VR =V <sub>DC</sub> @Ta=25°C	5						
			VR =V <sub>DC</sub> @Ta=125°C	125						



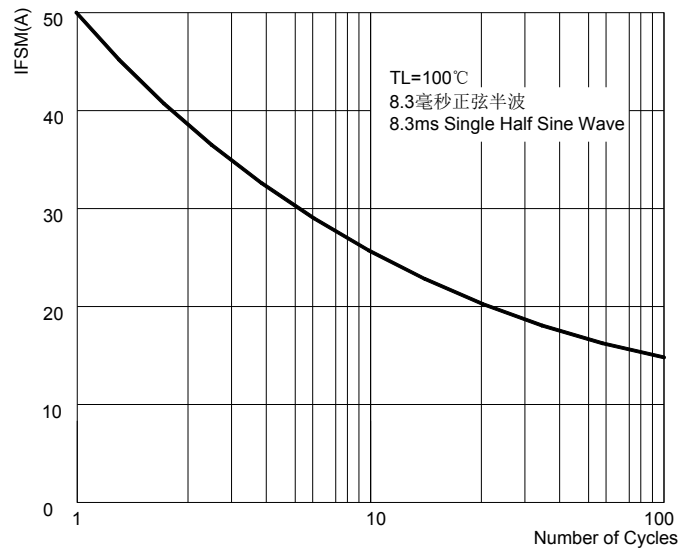
# GS2AA THRU GS2MA (S2AA THRU S2MA)

## ■ Characteristics (Typical)

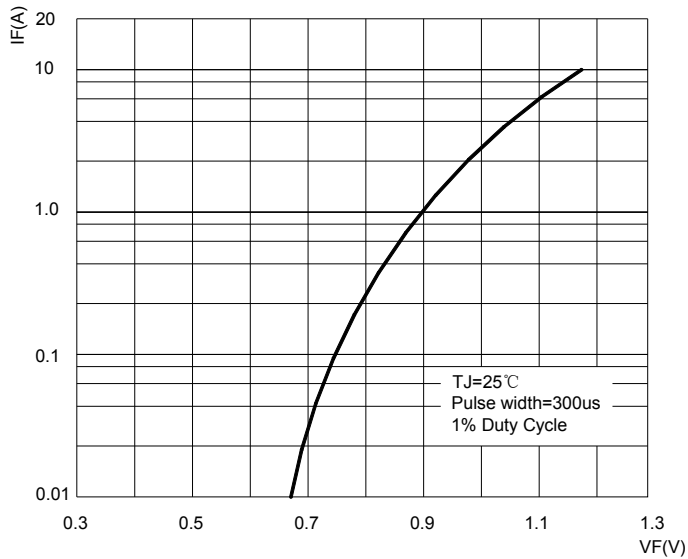
**FIG.1: Io-TL Curve**



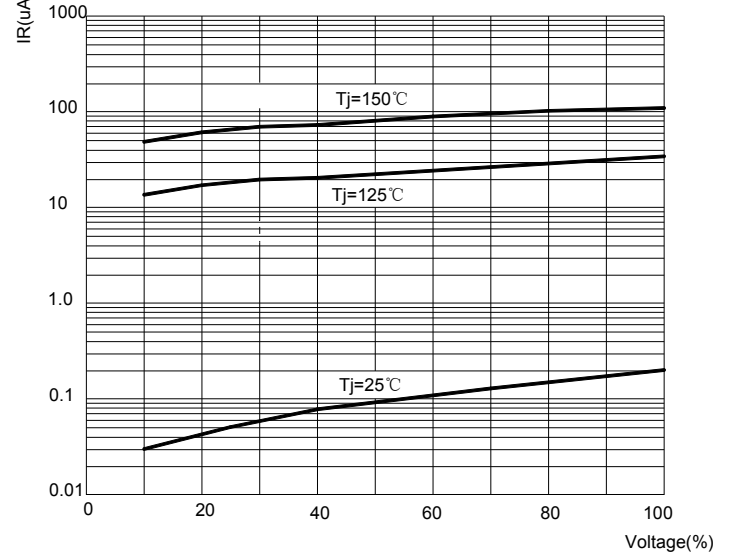
**FIG.2: Forward Surge Current Capability**



**FIG.3: Forward Voltage**



**FIG.4: Typical Reverse Characteristics**



## GS2AA THRU GS2MA (S2AA THRU S2MA)

### ■ Ordering Information (Example)

PREFERRED	PACKAGE CODE	MINIMUM PACKAGE(pcs)	INNER BOX QUANTITY(pcs)	OUTER CARTON QUANTITY(pcs)	DELIVERY MODE
GS2AA THRU GS2MA (S2AA THRU S2MA)	SMA	5000	10000	80000	13" reel
		7500	15000	120000	13" reel

### ■ Outline Dimensions

