

PRODUCT TYPE II
(36POS. WITHOUT COVER SHOWN)

NOTES: UNLESS OTHERWISE SPECIFIED

1. DIMENSION SHALL BE INTERPRETED PER ASME Y14.5-2009
2. SPECIFICATION OF PRODUCTS ARE SHOWN ON DRAWING 303-0300-1680
3. MATERIALS OF PARTS ARE SHOWN ON DRAWING 303-0500-1680
4. PRODUCT NO. MATRIX : LD21 *** - M *** *

POSITION No.
26 = 26 POS.
36 = 36 POS.
50 = 50 POS.
68 = 68 POS.

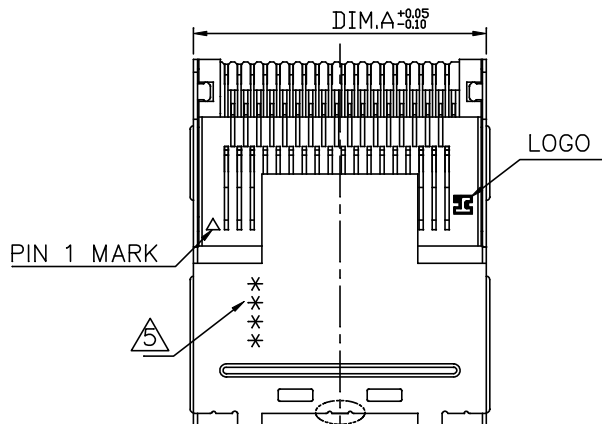
PLATING CODE
H = 30u" GOLD PLATING
WITH RoHS COMPLIANCE
V = 15u" GOLD PLATING
WITH RoHS COMPLIANCE

PACKING TYPE
NONE(9) = TRAY WITHOUT COVER
6 = TAPE&REEL WITHOUT COVER
7 = TAPE&REEL WITH COVER
8 = TRAY WITH COVER

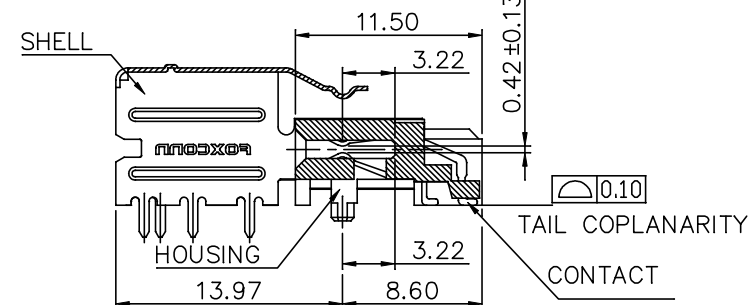
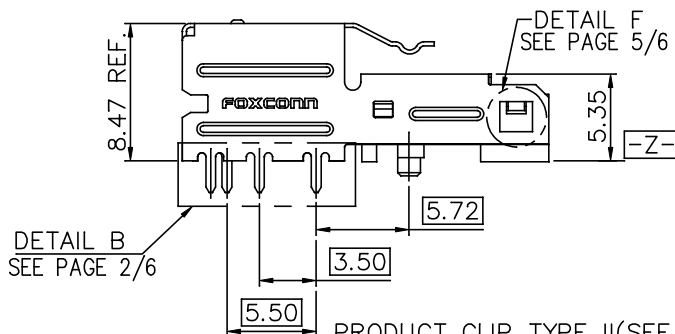
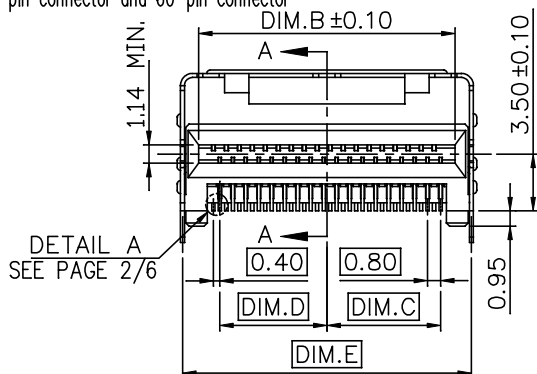
HOUSING MATERIAL
NONE(L) = LCP,COLOR BLACK
MODIFY CODE(1,2,3,4...)
8 = NICKEL SILVER SHELL
C = STAINLESS STEEL SHELL

5. DATE CODE: PLEASE REFER TO FOXCONN DOC. "SQ-3B0-070".
6. HARMFUL MATERIAL CONTROL PLEASE FOLLOW FOXCONN DOC. NO. "EPI12".
7. THE CONCENTRATIONS OF BR & CI CAN SATISFY THE REQUIREMENTS OF HALOGEN-FREE IN DOC. "EPI12".
8. PLEASE CONTACT FOXCONN'S SALES REPRESENTATIVE TO VERIFY PRODUCT DETAILS & AVAILABILITY.

REV.	ECN.	APPD.
A	BC-06-772513	Jake W.Y
B	BC-07-7020301	Yusan
C	BC-07-7054586	Yusan
D	BC-07-7062175	Yusan
E	BC-07-7083082	Yusan
F	BC-08-7035125	Yusan
G	BC-09-7019969	Yihsin
H	BC-12-0089201	Shih-wei Hsiao
J	BC-14-0064188	Shih-wei Hsiao
K	BC-15-0003720	Shih-wei Hsiao
L	BC-16-0008090	Shih-wei Hsiao
M	BC-16-0022249	Shih-wei Hsiao



Here is the "v-cut" mark only for
50-pin connector and 60-pin connector

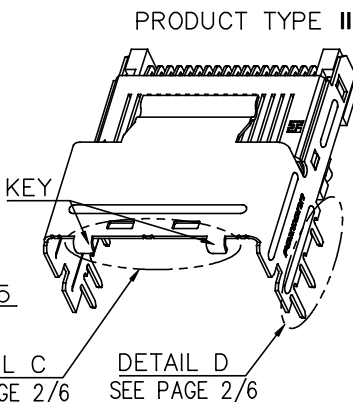
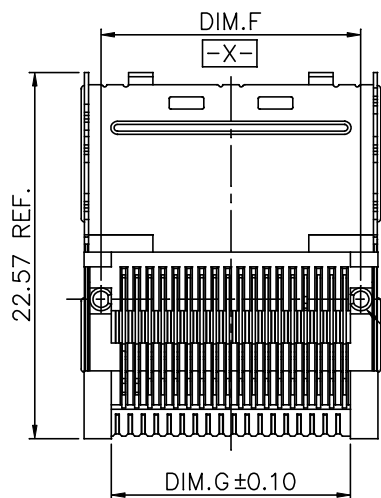


PRODUCT CLIP TYPE II(SEE PAGE 5/6)
36 POS. WITH DUAL KEY AND
THROUGH SHELL TYPE OPTION SHOWN

SECTION: A-A

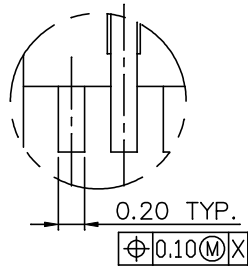
TABLE-I

LD2168*-M****	30.85	28.60	13.40	13.00	30.60	28.80	27.53	32.60	33.60
LD2150*-M****	23.65	21.40	9.80	9.40	23.40	21.60	20.33	25.40	26.40
LD2136*-M****	18.05	15.80	7.00	6.60	17.80	16.00	14.73	19.80	20.80
LD2126*-M****	14.05	11.80	5.00	4.60	13.80	12.00	10.73	15.80	16.80
PART No.	DIM.A	DIM.B	DIM.C	DIM.D	DIM.E	DIM.F	DIM.G	DIM.H	DIM.J

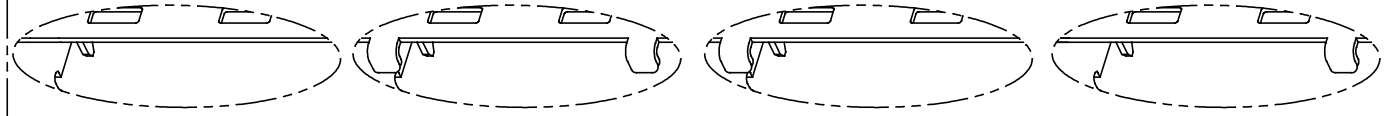


X.±	X.* ±	UNITS	NAME(INTENDED USE)	FOXCONN® FOXCONN INTERCONNECT TECHNOLOGY LIMITED.
.X± 0.25	.X* ±	MM	MINI SAS	
.XX± 0.13	.XX* ±	MAT'L	PART NO.(INTENDED USE)	CLASS: <input type="checkbox"/> CONFIDENTIAL <input type="checkbox"/> SECRET <input checked="" type="checkbox"/> GENERAL
.XXX±	.XXX* ±	FINISH	LD21***-M8*** LD21***-MC***	TITLE: CUSTOMER DRAWING, R/A,SMT,0.80mm PITCH
THESE DRAWINGS AND SPECIFICATIONS ARE THE PROPERTY OF FOXCONN INTERCONNECT TECHNOLOGY LIMITED AND SHALL NOT BE REPRODUCED, COPIED OR USED IN ANY MANNER WITHOUT THE PRIOR WRITTEN CONSENT OF FOXCONN INTERCONNECT TECHNOLOGY LIMITED.			APPD: Shih-wei Hsiao	DWG NO.: 303-0000-1680
			Q'TY	SCALE SHEET REV.
			CHKD: Yusan Hsiao	N/A 1/6 M
			DRAW: Lisa .Wang 06/06'16	

DETAIL A
SCALE 8:1



SHELL KEY TYPE OPTION AS SHOWN:



UNIVERSAL
DETAIL C
SCALE 2:1

DUAL KEY
DETAIL C
SCALE 2:1

LEFT KEY
DETAIL C
SCALE 2:1

RIGHT KEY
DETAIL C
SCALE 2:1

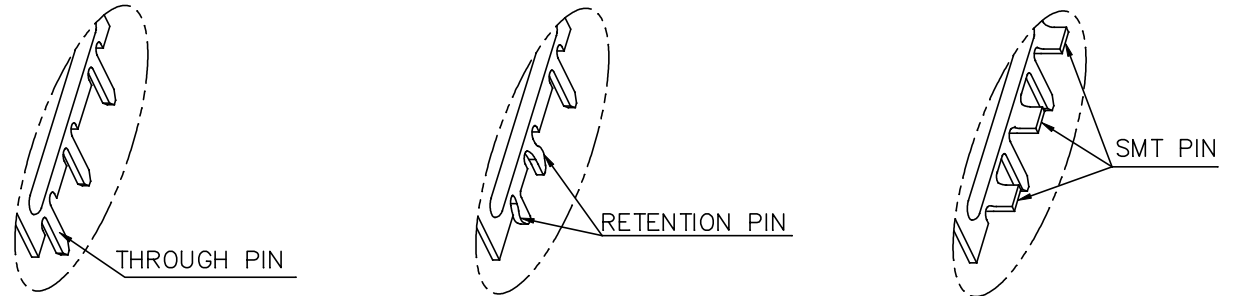
REV.	ECN.	NO.	APPD.

TABLE-II

THE PRODUCT TYPE II IS THE BELOW
(EXCLUDING "LD2136*-M*1(2/3/4)**")

LD21***-M*Y**	1.96	RETENTION	DUAL KEY
LD21***-M*W**	3.18	THROUGH HOLE	UNIVERSAL
LD21***-M*V**	1.96	THROUGH HOLE	UNIVERSAL
LD21***-M*U**	2.79	THROUGH HOLE	UNIVERSAL
LD21***-M*S**	3.56	THROUGH HOLE	DUAL KEY
LD21***-M*R**	3.56	THROUGH HOLE	RIGHT KEY
LD21***-M*Q**	3.56	THROUGH HOLE	LEFT KEY
LD21***-M*N**	3.18	THROUGH HOLE	DUAL KEY
LD21***-M*M**	3.18	THROUGH HOLE	RIGHT KEY
LD21***-M*L**	3.18	THROUGH HOLE	LEFT KEY
LD21***-M*K**	1.96	THROUGH HOLE	DUAL KEY
LD21***-M*J**	1.96	THROUGH HOLE	RIGHT KEY
LD21***-M*I**	1.96	THROUGH HOLE	LEFT KEY
LD21***-M*G**	1.96	RETENTION	UNIVERSAL
LD21***-M*F**	1.96	RETENTION	RIGHT KEY
LD21***-M*E**	1.96	RETENTION	LEFT KEY
LD21***-M*D**	1.96	SMT	UNIVERSAL
LD21***-M*C**	1.96	SMT	DUAL KEY
LD21***-M*B**	1.96	SMT	RIGHT KEY
LD21***-M*A**	1.96	SMT	LEFT KEY
LD21***-M*9**	2.79	THROUGH HOLE	LEFT KEY
LD21***-M*8**	2.79	THROUGH HOLE	RIGHT KEY
LD21***-M*7**	2.79	THROUGH HOLE	DUAL KEY
LD21***-M*6**	2.79	SMT	UNIVERSAL
LD21***-M*5**	3.56	THROUGH HOLE	UNIVERSAL
LD21***-M*4**	1.96	RETENTION	DUAL KEY
LD21***-M*3**	3.18	THROUGH HOLE	UNIVERSAL
LD21***-M*2**	1.96	THROUGH HOLE	UNIVERSAL
LD21***-M*1**	2.79	THROUGH HOLE	UNIVERSAL
PRODUCT No.	DIM.K	SHELL P.C.B. OPTION	SHELL KEY OPTION

SHELL TAIL TYPE OPTION AS SHOWN:

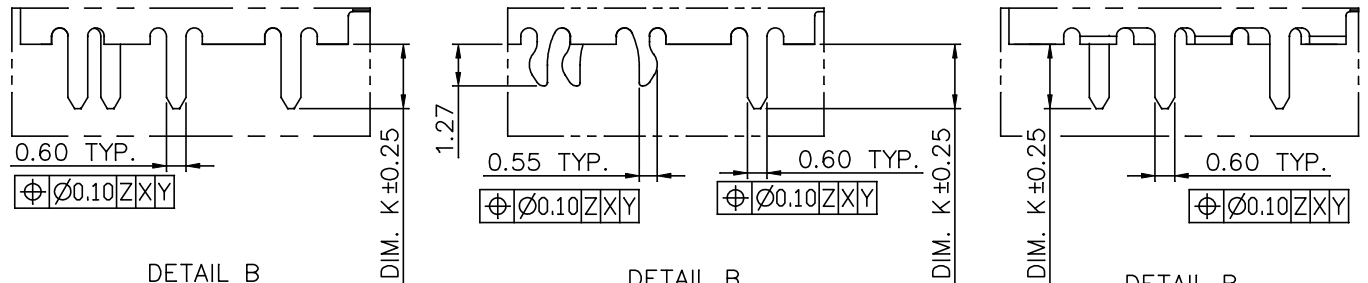


DETAIL D
SCALE: 2:1

DETAIL D
SCALE: 2:1

DETAIL D
SCALE: 2:1

SHELL TAIL TYPE DIMS OPTION AS SHOWN:



DETAIL B
SCALE 2:1

DETAIL B
SCALE 2:1

DETAIL B
SCALE 2:1

FOR THROUGH HOLE SHELL TYPE

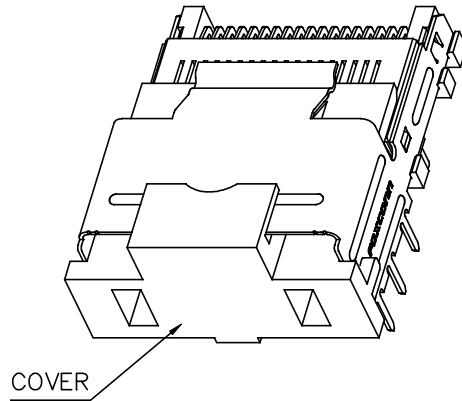
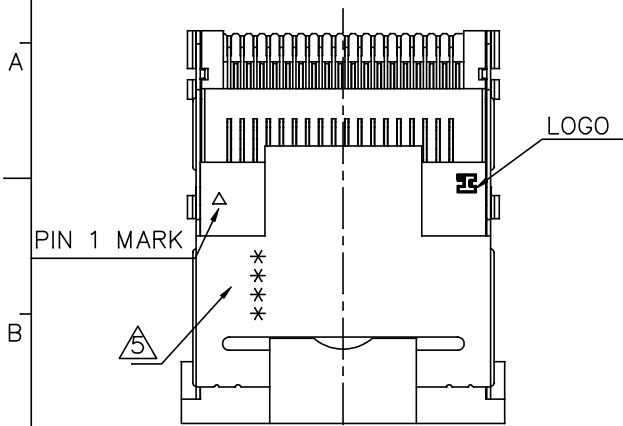
FOR RETENTION SHELL TYPE

FOR SMT SHELL TYPE

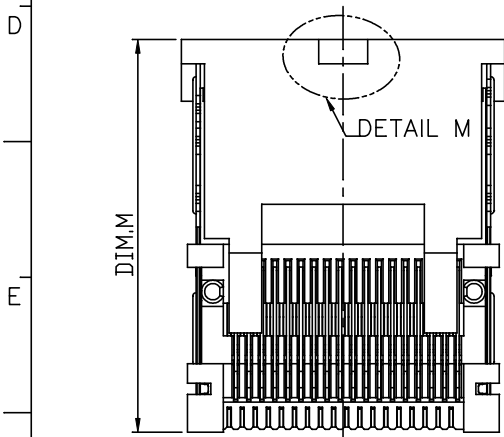
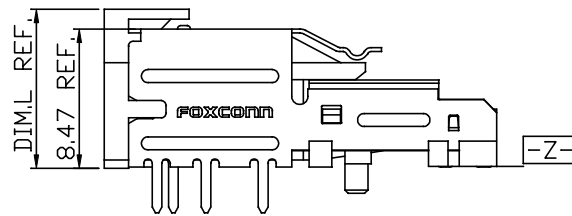
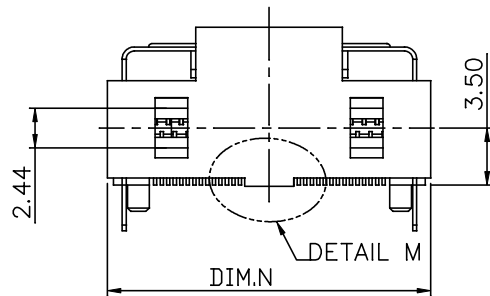
X ±	X* ±	UNITS MM	NAME (INTENDED USE) MINI SAS	FOXCONN® FOXCONN INTERCONNECT TECHNOLOGY LIMITED.		
.X ± 0.25	.X* ±	MAT'L	PART NO. (INTENDED USE) LD21***-M8*** LD21***-MC***			
.XX ± 0.13	.XX* ±	FINISH	APPD: Shih-wei Hsiao	CLASS: <input type="checkbox"/> CONFIDENTIAL <input type="checkbox"/> SECRET <input checked="" type="checkbox"/> GENERAL		
.XXX ±	.XXX* ±		Q'TY	CHKD: Yusan Hsiao DRAW: Lisa Wang 06/06'16	TITLE: CUSTOMER DRAWING, R/A,SMT,0.80mm PITCH	
THESE DRAWINGS AND SPECIFICATIONS ARE THE PROPERTY OF FOXCONN INTERCONNECT TECHNOLOGY LIMITED AND SHALL NOT BE REPRODUCED, COPIED OR USED IN ANY MANNER WITHOUT THE PRIOR WRITTEN CONSENT OF FOXCONN INTERCONNECT TECHNOLOGY LIMITED.				DWG NO.: 303-0000-1680		
				SCALE	SHEET	REV.
				N/A	2/6	M

36 POS. PRODUCT TYPE I WITH COVER SHOWN

REV.	ECN.	NO.	APPD.



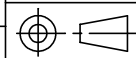
WITH COVER TYPE VIEW SHOWN
(PRODUCT TYPE I)



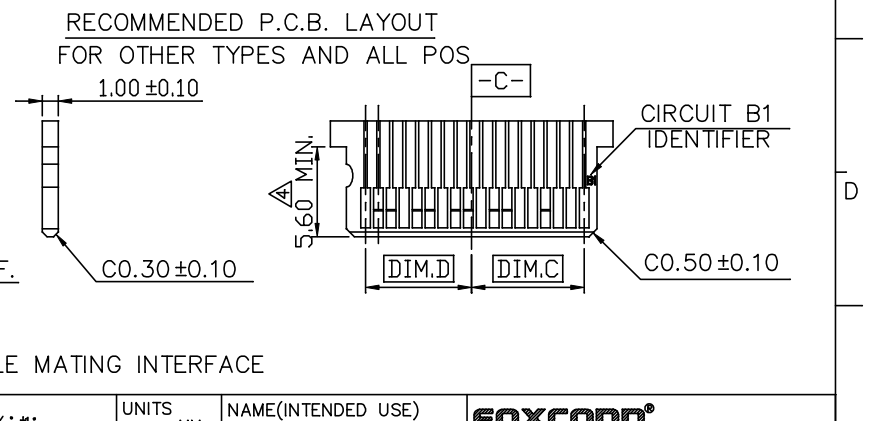
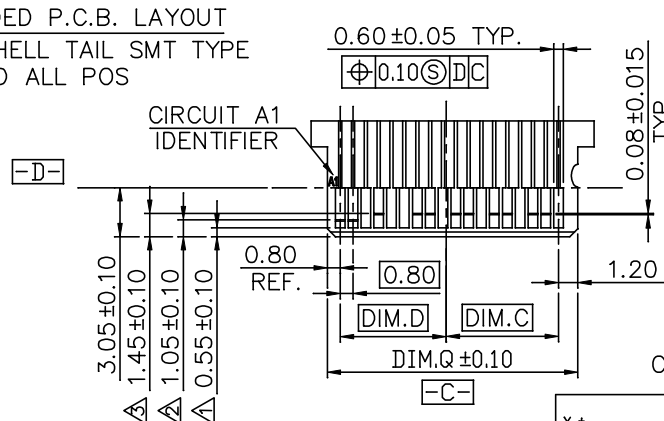
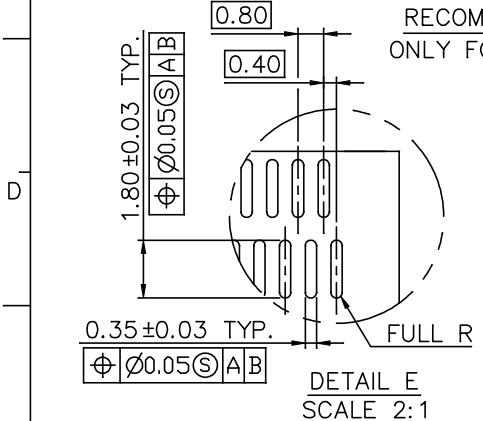
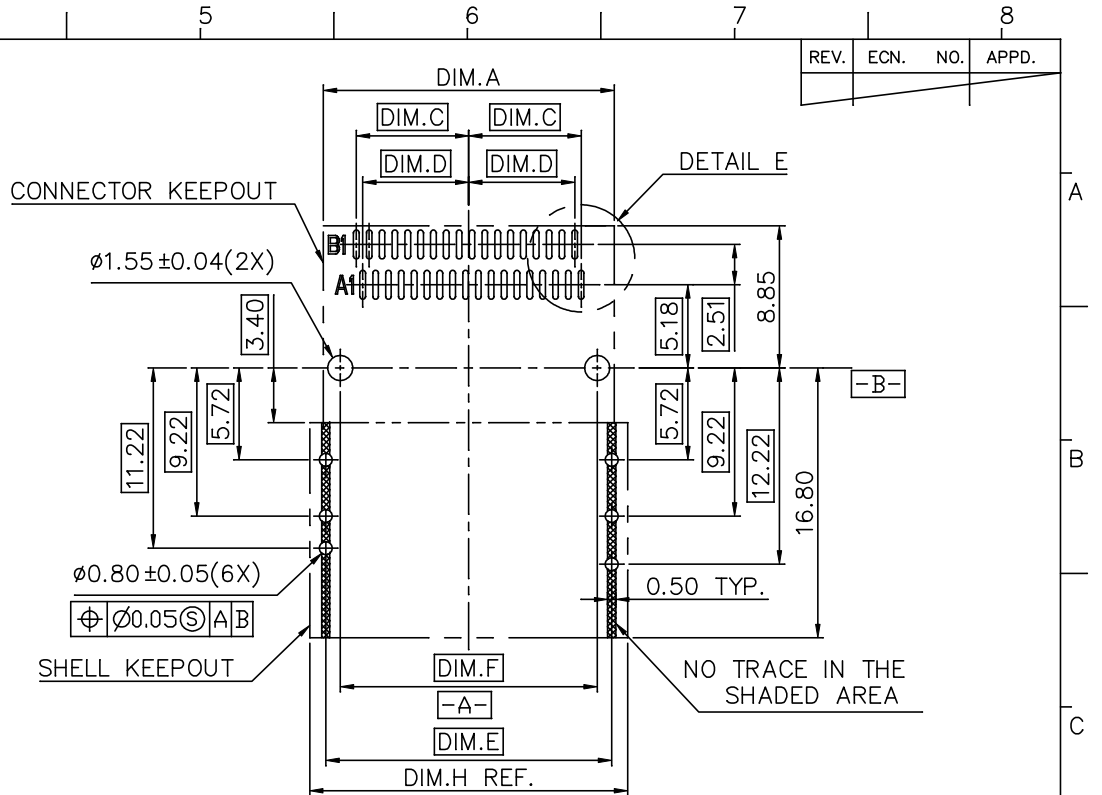
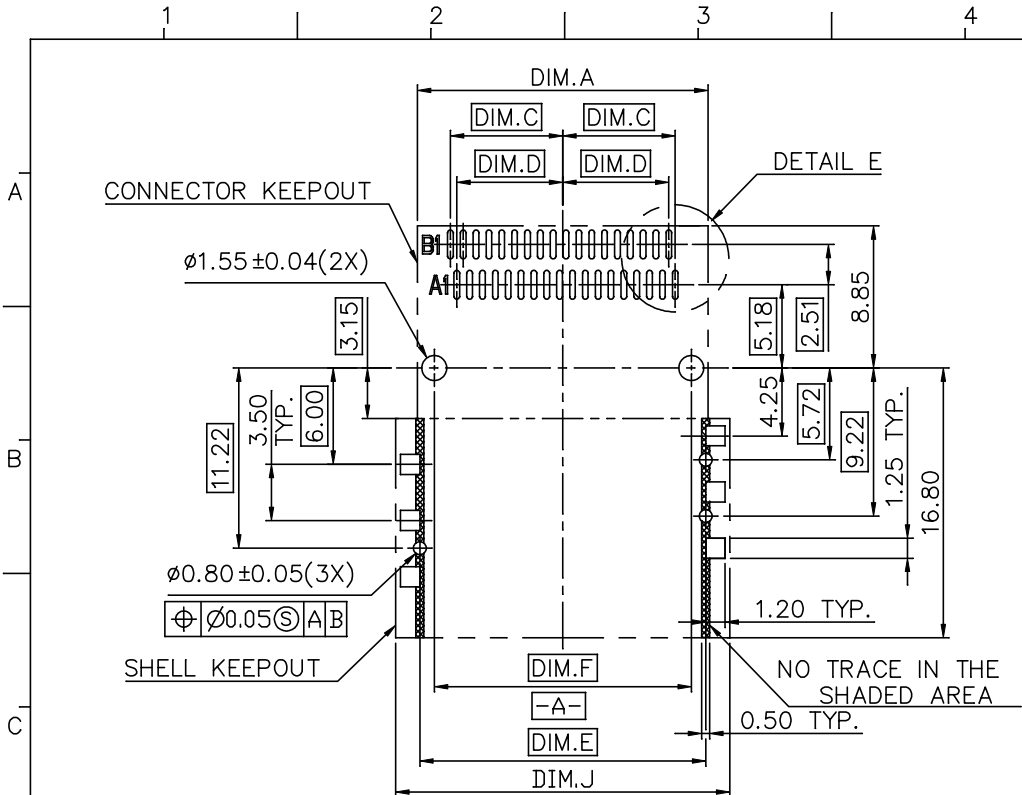
LD2168*-M***7	9.98	24.07	32.63
LD2150*-M***7	9.98	24.07	25.44
LD2136*-M***7	9.98	24.07	19.84
LD2126*-M***7	9.98	24.07	16.00
PART No.	DIM.L	DIM.M	DIM.N

X.±	X.* ±*	UNITS MM	NAME(INTENDED USE) MINI SAS	FOXCONN® FOXCONN INTERCONNECT TECHNOLOGY LIMITED. CLASS: <input type="checkbox"/> CONFIDENTIAL <input type="checkbox"/> SECRET <input checked="" type="checkbox"/> GENERAL TITLE: CUSTOMER DRAWING, R/A,SMT,0.80mm PITCH DWG NO.: 303-0000-1680
.X± 0.25	.X* ±	MAT'L	PART NO.(INTENDED USE) LD21***-M8*** LD21***-MC***	
.XX± 0.13	.XX* ±	FINISH	APPD: Shih-wei Hsiao	SCALE SHEET REV.
.XXX±	.XXX* ±		Q'TY	CHKD: Yusan Hsiao DRAW: Lisa .Wang 06/06'16

THESE DRAWINGS AND SPECIFICATIONS ARE THE PROPERTY OF FOXCONN INTERCONNECT TECHNOLOGY LIMITED AND SHALL NOT BE REPRODUCED, COPIED OR USED IN ANY MANNER WITHOUT THE PRIOR WRITTEN CONSENT OF FOXCONN INTERCONNECT TECHNOLOGY LIMITED.



REV.	ECN.	NO.	APPD.



- NOTES:
- BOARD LAYOUT PER DEFINED STANDARD OR CUSTOMER REQUIREMENTS.
 - ① PAD CONFIGURATION FOR THIRD MATE; (HIGH SPEED SIGNALS).
 - ② PAD CONFIGURATION FOR SECOND MATE.
 - ③ PAD CONFIGURATION FOR FIRST MATE
 - ④ MINIMUM STEP REQUIRED IF P.C.B. MADE WIDER THAN CARD TOUNGE.

LD2168*-M***	28.40
LD2150*-M***	21.20
LD2136*-M***	15.60
LD2126*-M***	11.60
PART No.	DIM.Q

X ±	X' ±	UNITS	NAME (INTENDED USE)	FOXCONN® FOXCONN INTERCONNECT TECHNOLOGY LIMITED. CLASS: <input type="checkbox"/> CONFIDENTIAL <input type="checkbox"/> SECRET <input checked="" type="checkbox"/> GENERAL TITLE: CUSTOMER DRAWING, R/A,SMT,0.80mm PITCH DWG NO.: 303-0000-1680
.X ± 0.25	.X' ±	MM	MINI SAS	
.XX ± 0.13	.XX' ±	MAT'L	PART NO. (INTENDED USE)	
.XXX ±	.XXX' ±	FINISH	LD21***-MB*** LD21***-MC***	
THESE DRAWINGS AND SPECIFICATIONS ARE THE PROPERTY OF FOXCONN INTERCONNECT TECHNOLOGY LIMITED AND SHALL NOT BE REPRODUCED, COPIED OR USED IN ANY MANNER WITHOUT THE PRIOR WRITTEN CONSENT OF FOXCONN INTERCONNECT TECHNOLOGY LIMITED.			APPD:	Shih-wei Hsiao Yusan Hsiao Lisa .Wang 06/06'16
Q'TY		CHKD:	Shih-wei Hsiao Yusan Hsiao Lisa .Wang 06/06'16	
SCALE SHEET REV. N/A 4/6 M				DRAW:

PRODUCT TYPE I SHOWN
(36POS. WITH COVER)

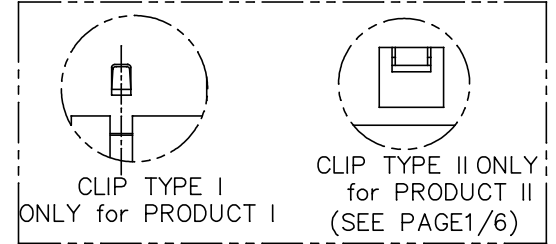
REV.	ECN.	NO.	APPD.
------	------	-----	-------

TABLE-III

THE PRODUCT TYPE I ONLY IS THE BELOW LIST

LD2136*-M*4**	1.96	RETENTION	DUAL KEY	CLIP TYPE
LD2136*-M*3**	3.18	THROUGH HOLE	UNIVERSAL	CLIP TYPE
LD2136*-M*2**	1.96	THROUGH HOLE	UNIVERSAL	CLIP TYPE
LD2136*-M*1**	2.79	THROUGH HOLE	UNIVERSAL	CLIP TYPE
PRODUCT No.	DIM.K	SHELL P.C.B. OPTION	SHELL KEY OPTION	CLIP TYPE OPTION

DETAIL F (CLIP TYPE OPTION)



A

B

C

D

E

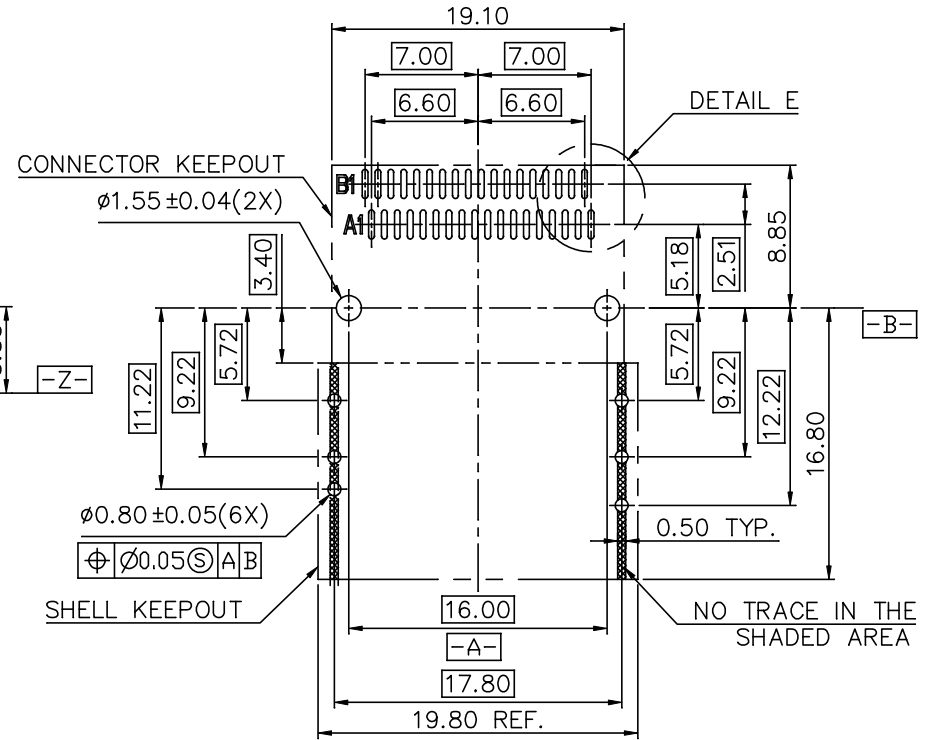
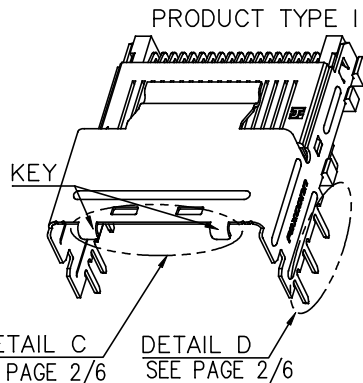
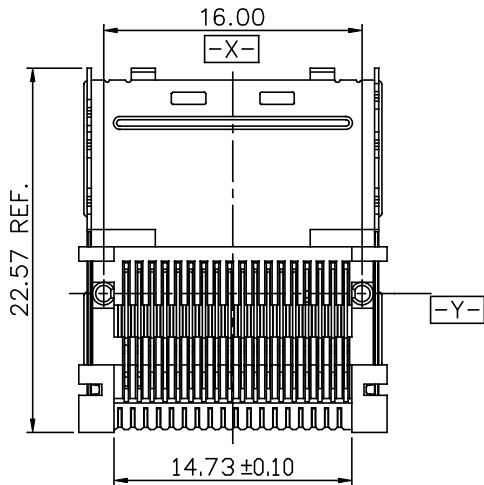
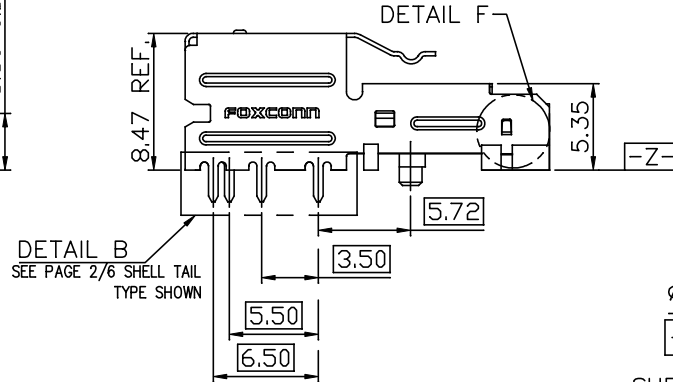
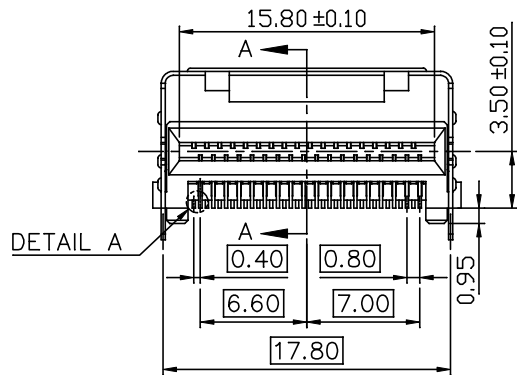
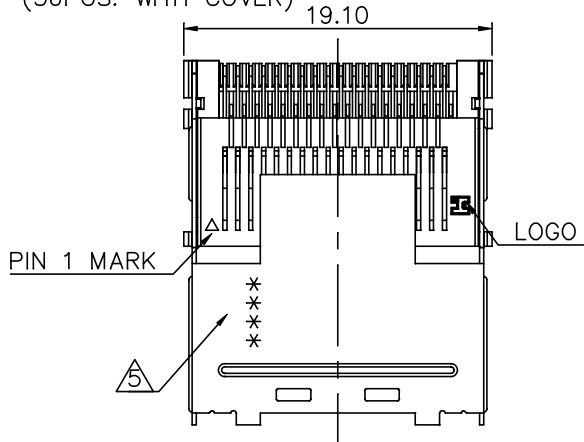
A

B

C

D

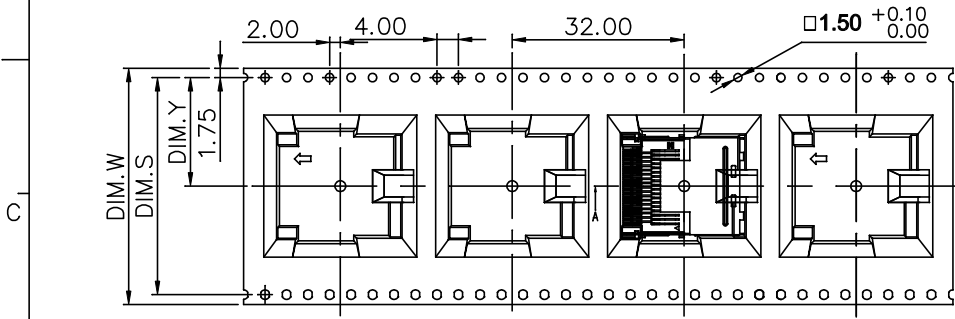
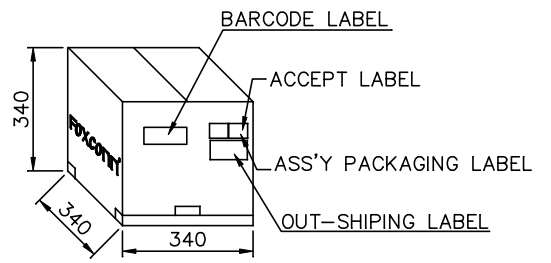
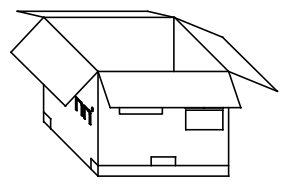
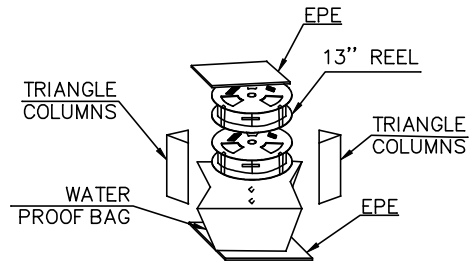
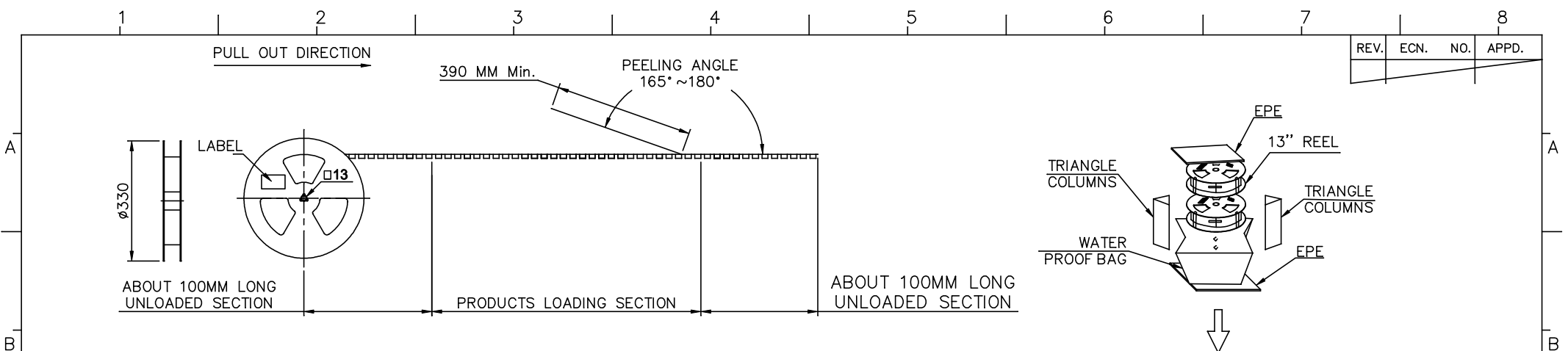
E



RECOMMENDED P.C.B. LAYOUT

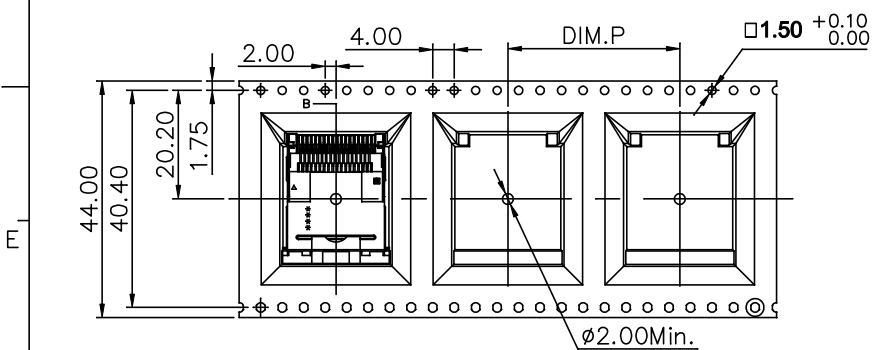
X.±	X.* ±	UNITS MM	NAME (INTENDED USE) MINI SAS	FOXCONN® FOXCONN INTERCONNECT TECHNOLOGY LIMITED.						
.X ± 0.25	.X* ±	MAT'L	PART NO. (INTENDED USE) LD21***-M8*** LD21***-MC***							
.XX ± 0.13	.XX* ±	FINISH	CLASS: <input type="checkbox"/> CONFIDENTIAL <input type="checkbox"/> SECRET <input checked="" type="checkbox"/> GENERAL	TITLE: CUSTOMER DRAWING, R/A, SMT, 0.80mm PITCH						
.XXX ±	.XXX* ±		APPD: Shih-wei Hsiao	DWG NO.: 303-0000-1680						
THESE DRAWINGS AND SPECIFICATIONS ARE THE PROPERTY OF FOXCONN INTERCONNECT TECHNOLOGY LIMITED AND SHALL NOT BE REPRODUCED, COPIED OR USED IN ANY MANNER WITHOUT THE PRIOR WRITTEN CONSENT OF FOXCONN INTERCONNECT TECHNOLOGY LIMITED.			CHKD: Yusan Hsiao	<table border="1"> <tr> <td>SCALE</td> <td>SHEET</td> <td>REV.</td> </tr> <tr> <td>N/A</td> <td>5/6</td> <td>M</td> </tr> </table>	SCALE	SHEET	REV.	N/A	5/6	M
			SCALE		SHEET	REV.				
N/A	5/6	M								
			DRAW: Lisa .Wang 06/06'16							

REV.	ECN.	NO.	APPD.



LD2168*-M**L6	56.00	52.40	26.20
LD2150*-M**L6	44.00	40.40	20.20
LD2136*-M**L6	44.00	40.40	20.20
LD2126*-M**L6	32.00	28.40	14.20
PRODUCT No.	DIM.W	DIM.S	DIM.Y

FOR LD21***-M**L6



LD2168*-M**L7	48.00
LD2150*-M**L7	40.00
LD2136*-M**L7	32.00
LD2126*-M**L7	32.00
PRODUCT No.	DIM.P

FOR LD21***-M**L7

X.±	X.* ±	UNITS MM	NAME(INTENDED USE) MINI SAS	foxconn® FOXCONN INTERCONNECT TECHNOLOGY LIMITED.
.X± 0.25	.X* ±	MAT'L	PART NO.(INTENDED USE) LD21***-M8*** LD21***-MC***	
.XX± 0.13	.XX* ±	FINISH	APPD: Shih-wei Hsiao	CLASS: <input type="checkbox"/> CONFIDENTIAL <input type="checkbox"/> SECRET <input checked="" type="checkbox"/> GENERAL
.XXX±	.XXX* ±		Q'TY	TITLE: CUSTOMER DRAWING, R/A,SMT,0.80mm PITCH
THESE DRAWINGS AND SPECIFICATIONS ARE THE PROPERTY OF FOXCONN INTERCONNECT TECHNOLOGY LIMITED AND SHALL NOT BE REPRODUCED, COPIED OR USED IN ANY MANNER WITHOUT THE PRIOR WRITTEN CONSENT OF FOXCONN INTERCONNECT TECHNOLOGY LIMITED.			CHKD: Yusan Hsiao	DWG NO.: 303-0000-1680
			DRAW: Lisa .Wang 06/06'16	SCALE SHEET REV. N/A 6/6 M

REV.	ECN. NO.	APPD.
A	BC-06-772516	Jake.W.Y
B	BC-07-7023785	Yusan
C	BC-08-7035129	Yusan
D	BC-12-0090764	Shih-Wei Hsiao
E	BC-15-0054363	Shih-Wei Hsiao

SPECIFICATIONS :

1. MATERIAL AND FINISH :

1-1. HOUSING :

HIGH TEMPERATURE,THERMOPLASTIC,UL94 V-0 , COLOR BLACK.

1-2. CONTACT :

COPPER ALLOY, NICKEL PLATING OVER ALL, THICKNESS 50u" MIN.,
 MATTE TIN PLATING ON SOLDER AREA,THICKNESS 100u" MIN.,
 GOLD PLATING OVER NICKEL ON CONTACT AREA,

1-3. SHELL:

A. COPPER ALLOY.

B. STAINLESS STEEL	1) NICKEL PLATING OVER ALL,THICKNESS : 70u"~200u" MATTE TIN PLATING OVER NICKEL ON SOLDER AREA THICKNESS : 50u"MIN.	T/H TAIL TYPE RETENTION TYPE
	2) SOLDERABLE NICKEL PLATING ,THICKNESS : 70u"MIN.	SMT TAIL TYPE

1-4. HARMFUL MATERIAL CONTROL PLEASE FOLLOW DOC. NO. "EPI12"

2. ELECTRICAL :

2-1. CURRENT RATING : 0.5 AMPERES PER CONTACT (MAXIMUM)

2-2. CONTACT RESISTANCE: 80 MILLIOHMS (MAXIMUM) PER CONTACT INITIAL,
 RESISTENCE CHANGE 20 MILLIOHMS (MAXIMUM) AFTER TEST. EIA-364-23A

2-3. INSULATION RESISTANCE : 1000 MEGAOHMS (MINIMUM). EIA-364-21B

2-4. DIELECTRIC WITHSTANDING VOLTAGE : 300 VAC (MINIMUM) AT SEA LEVEL.
 EIA-364-20B

2-5. OPERATING TEMPERATURE : -40° C TO 105° .

3. MECHANICAL:

3-1. DURABILITY: 250 CYCLES, EIA-364-09C

3-2. MATING FORCE : 55.5N Max, EIA-364-13

3-2. UNMATING FORCE : 49.0N Max(WITH RETENTION LATCH DISENGAGED),EIA-364-13

4. ENVIRONMENTAL:

4-1. VIBRATION, RANDOM : PASS EIA-364-28, TEST CONDITION VII, CONDITION D.

4-2. PHYSICAL SHOCK : EIA 364-27, METHOD H.

4-3 THERMAL SHOCK : EIA 364-32C, CONDITION I.

4-4. TEMPERATURE LIFE : PASS EIA-364-17,METHOD A, TEST CONDITION 2,
 TEST TIME CONDITION C.

4-5. HUMIDITY TEMPERATURE CYCLING : PASS EIA-364-31, METHOD III.

4-6. MIXED FLOWING GAS : PASS EIA-364-65, CLASS IIA

4-7. SOLDERABILITY: PASS MIL-STD-202F ,METHOD 208.

X.±	X.* ±	UNITS mm	NAME(INTENDED USE)	FOXCONN®			
.X±	.X* ±	MAT'L	Internal Mini SAS	FOXCONN INTERCONNECT TECHNOLOGY LIMITED.			
.XX±	.XX* ±		PART NO.(INTENDED USE)	CLASS: <input type="checkbox"/> CONFIDENTIAL <input type="checkbox"/> SECRET <input checked="" type="checkbox"/> GENERAL			
.XXX±	.XXX* ±	FINISH	LD21***-M8*** LD21***-MC***	TITLE: SPECIFICATION SHEET MINI SAS, RECEPTACLE			
THESE DRAWINGS AND SPECIFICATIONS ARE THE PROPERTY OF FOXCONN INTERCONNECT TECHNOLOGY LIMITED. AND SHALL NOTBE REPRODUCED, COPIED OR USED IN ANY MANNER WITHOUT THE PRIOR WRITTEN CONSENT OF FOXCONN INTERCONNECT TECHNOLOGY LIMITED.			APPD:	Shih-Wei Hsiao	DWG NO.:		
		Q'TY	CHKD:	Yusan Hsiao	303-0300-1680		
		DRAW:	Lisa Wang 11/05'15		SCALE	SHEET	REV.
				1:1	1/1	E	

1	2		3		4		
A				REV.	ECN. NO.	APPD.	A
				A	BC-07-7020312	Yusan	
				B	BC-08-7035131	Yusan	
				C	BC-12-0089247	Shih-Wei Hsiao	
			D	BC-15-0054721	Shih-Wei Hsiao		

ITEM	DESC.	Q'TY	MATERIAL	TREATMENT	REMARK
1	HOUSING	1	HIGH TEMPERATURE THERMOPLASTIC, UL94 V-0	MOLDED BLACK	
2	CONTACT	SAME AS NO. OF POS. (SEE NOTES BELOW)	COPPER ALLOY	A) NICKEL PLATING OVER ALL, THICKNESS : 50u' MIN. B) MATTE TIN PLATING OVER NICKEL ON SOLDER AREA, THICKNESS : 100u' MIN. C) GOLD PLATING ON CONTACT AREA (PLEASE SEE NOTES BELOW)	
3	SHELL	1	A. COPPER ALLOY	NONE	
			B. STAINLESS STEEL	1) NICKEL PLATING OVER ALL, THICKNESS : 70u'~200u' MATTE TIN PLATING OVER NICKEL ON SOLDER AREA, THICKNESS : 50u' MIN.	T/H TAIL TYPE RETENTION TYPE
				2) SOLDERABLE NICKEL PLATING , THICKNESS : 70u"MIN.	SMT TAIL TYPE
4	COVER	1	HIGH TEMPERATURE THERMOPLASTIC, UL94 V-0	MOLDED BLACK	

NOTE :

1.HARMFUL MATERIAL CONTROL PLEASE FOLLOW DOC NO."EPI12"

2.PRODUCT NO. MATRIX:

LD 2 1 * * * * - M * * * *

POSTION NO. _____	PACKAGE TYPE
26 = 26 POS.	NONE(9) = TRAY WITHOUT COVER
36 = 36 POS.	6 = TAPE&REEL WITHOUT COVER
50 = 50 POS.	7 = TAPE&REEL WITH COVER
68 = 68 POS.	8 = TRAY WITH COVER
PLATING CODE _____	HOUSING MATERIAL
F = GOLD FLASH PLATING WITH RoHS COMPLIANCE	NONE(L) = LCP, COLOR BLACK
H = 30u" GOLD PLATING WITH RoHS COMPLIANCE	MODIFICATION CODE (1,2,3,4, . . .)
V = 15u" GOLD PLATING WITH RoHS COMPLIANCE	8 SHELL MATERIAL=NICKEL SILVER
	C SHELL MATERIAL=STAINLESS STEEL
	MINI SAS TYPE

X.±	X.* ±	UNITS mm	NAME(INTENDED USE)	FOXCONN®		
.X±	.X* ±	MAT'L	Mini SAS	FOXCONN INTERCONNECT TECHNOLOGY LIMITED.		
.XX±	.XX* ±		PART NO.(INTENDED USE)	CLASS: <input type="checkbox"/> CONFIDENTIAL <input type="checkbox"/> SECRET <input checked="" type="checkbox"/> GENERAL		
.XXX±	.XXX* ±	FINISH	LD21***-M8*** LD21***-MC***	TITLE: MATERIAL SHEET MINI SAS RECEPTACLE		
THESE DRAWINGS AND SPECIFICATIONS ARE THE PROPERTY OF FOXCONN INTERCONNECT TECHNOLOGY LIMITED, AND SHALL NOTBE REPRODUCED, COPIED OR USED IN ANY MANNER WITHOUT THE PRIOR WRITTEN CONSENT OF FOXCONN INTERCONNECT TECHNOLOGY LIMITED.			APPD: Shih-Wei Hsiao	DWG NO.:		
			CHKD: Yusan Hsiao	303-0500-1680		
			DRAW: Lisa Wang 11/05'15		SCALE	SHEET
				N/A	1/1	D