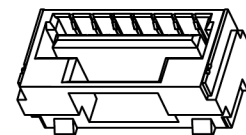
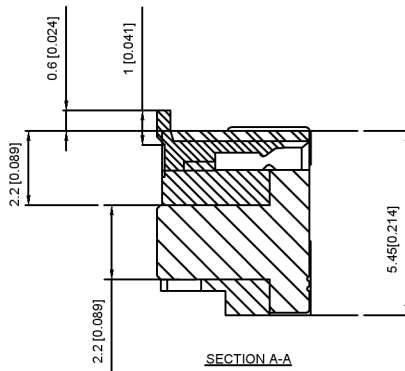
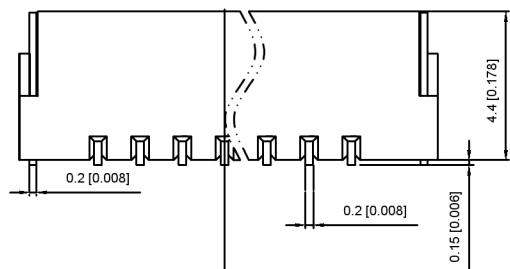


PCB LAYOUT

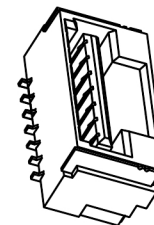


Specifications:

- 规格:  
 Voltage rating:50V AC/DC  
 额定电压: 50V AC/DC  
 Current rating:1A AC/DC  
 额定电流: 1A AC/DC  
 Contact Resistance:≤20MΩ  
 接触电阻: ≤20MΩ  
 Insulation Resistance:≥100MΩ  
 绝缘电阻:≥100MΩ  
 Dielectric strength:250V AC/minute  
 耐压: 250V AC/minute  
 Plug-in force: ≤3N(per pin)  
 插入力: ≤3N (per pin)  
 Plug-out force:≥0.3N (per pin)



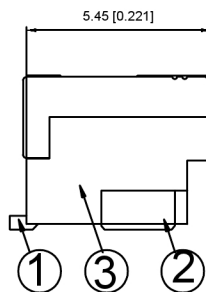
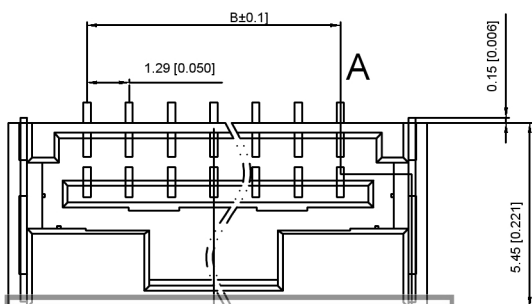
SECTION A-A



X1254W V S-XX-LP SW  
 ① ② ③ ④ ⑤ ⑥ ⑦

- ① Series No
- ② Category:W-WAFER
- ③ Welding Board Angle:V-90°
- ④ Welding Way:S-SMT
- ⑤ Row No-Pin No:XX-02-07PIN
- ⑥ Material:LP-LCP 94V-0
- ⑦ Plating Category:SW-Matte Tin Plating(Tin:70u Min)

| Circuits | Dinansin mm |      | Circuits | Dinansin mm |      |
|----------|-------------|------|----------|-------------|------|
|          | A           | B    |          | A           | B    |
| 2        | 5.58        | 1.25 | 6        | 10.85       | 6.25 |
| 3        | 7.10        | 2.50 | 7        | 12.10       | 7.50 |
| 4        | 8.35        | 3.75 |          |             |      |
| 5        | 9.60        | 5.00 |          |             |      |



|                  |               |               |             |                       |
|------------------|---------------|---------------|-------------|-----------------------|
| X1254WVS-XX-LPSW | PA9T UL 94V-0 | Tin-Plated    | Tin-Plated  | X1254W                |
| PART NO          | Material      | Material(pin) | Finish(Pin) | Suitable XKB Terminal |

广东星坤科技股份有限公司

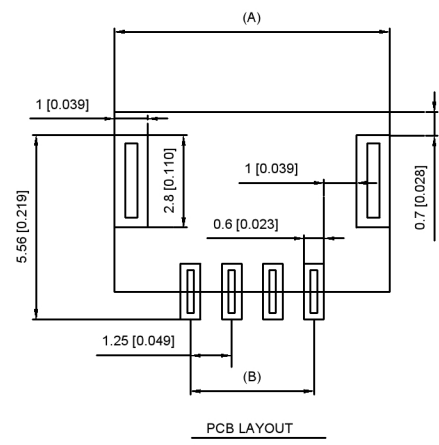
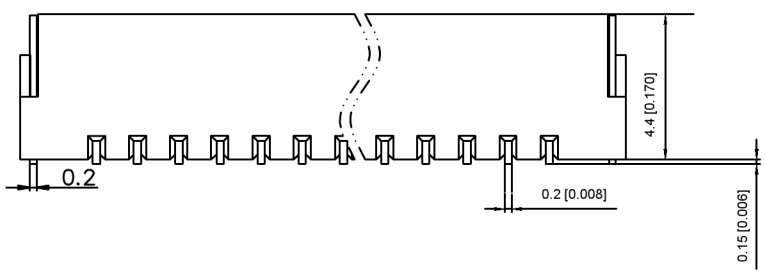
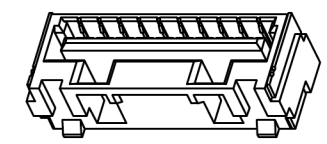
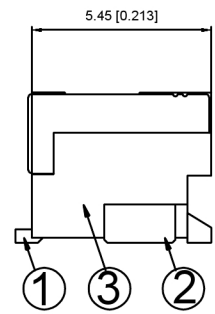
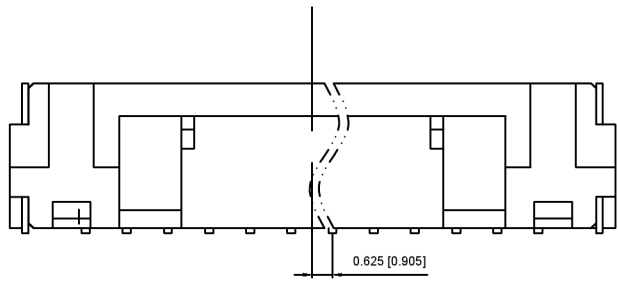
生效 日期

文件工程章

|                                      |  |      |  |             |  |
|--------------------------------------|--|------|--|-------------|--|
| DSND                                 |  | DATE |  | SCALE: N/A  | MODEL TYPE:<br>Wire to board connector     |
| DWN                                  |  | DATE |  | VIEW:       | PART NO.:<br>1.25mm Crimp Style Connectors |
| CHKD                                 |  | DATE |  | UNIT: mm/in | DWG NO.:<br>X1254WVS-XX-LPSW               |
| APPD                                 |  | DATE |  | SIZE: A4    |  |
| XKB INDUSTRIAL PRECISION CO.,LIMITED |  |      |  | WEIGHT      | SHEET                                      |
|                                      |  |      |  | 1/1         | REVISION<br>A0                             |

|            |         |
|------------|---------|
| units:     | mm      |
| tolerance: |         |
| X.X        | ±0.2mm  |
| X.XX       | ±0.1mm  |
| X.XXX      | ±0.05mm |

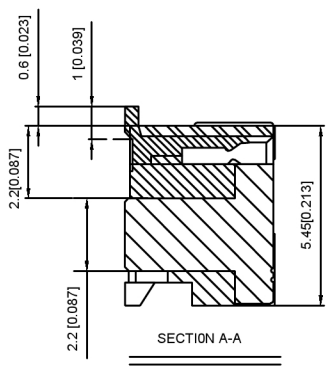
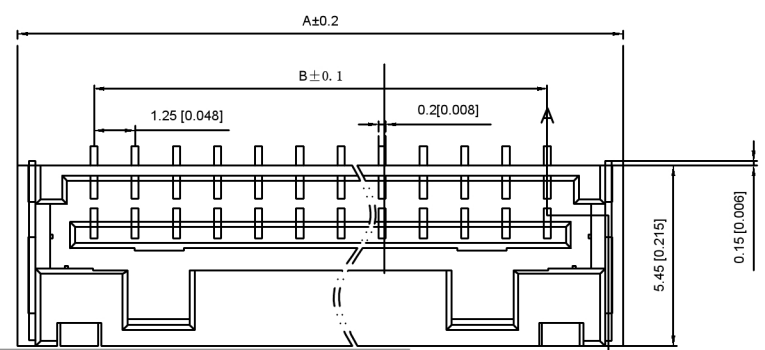
DATE REVISED APPROVED



Specifications:  
 规格:  
 Voltage rating:50V AC/DC  
 额定电压: 50V AC/DC  
 Current rating:1A AC/DC  
 额定电流: 1A AC/DC  
 Contact Resistance:≤20MΩ  
 接触电阻: ≤20MΩ  
 Insulation Resistance:≥100MΩ  
 绝缘电阻: ≥100MΩ  
 Dielectric strength:250V AC/minute  
 耐压: 250V AC/minute  
 Plug-in force: ≤3N (per pin)  
 插入力: ≤3N ( per pin)  
 Plug-out force:≥0.3N ( per pin)

X1254 WVS -XX-LP SW  
 ① ② ③ ④ ⑤ ⑥ ⑦

- ① Series No
- ② Category:W-WAFER
- ③ Welding Board Angle:V-90°
- ④ Welding Wway:S-SMT
- ⑤ Row No-Pin No:XX-02-07PIN
- ⑥ Material:LCP-LCP 94V-0
- ⑦ Plating Category:SW-Matte Tin Plating(Tin:70u Min)



| Circuits | Dinansin mm |       | Circuits | Dinansin mm |       |
|----------|-------------|-------|----------|-------------|-------|
|          | A           | B     |          | A           | B     |
| 8        | 13.35       | 8.75  | 12       | 18.35       | 13.75 |
| 9        | 14.60       | 10.00 | 13       | 19.6        | 15.00 |
| 10       | 15.85       | 11.25 | 14       | 20.85       | 16.25 |
| 11       | 17.10       | 12.50 | 15       | 22.10       | 17.50 |

|                  |               |               |                |                       |
|------------------|---------------|---------------|----------------|-----------------------|
| X1254WVS-XX-LPSW | PA9T UL 94V-0 | Tin-Plated    | Tin-Plated     | X1254W                |
|                  | LCP UL 94V-0  | Brass         | Phosphor Brass |                       |
| PART NO          | Material      | Material(pin) | Finish(Pin)    | Suitable XKB Terminal |

广东星坤科技股份有限公司

生 日期

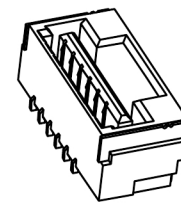
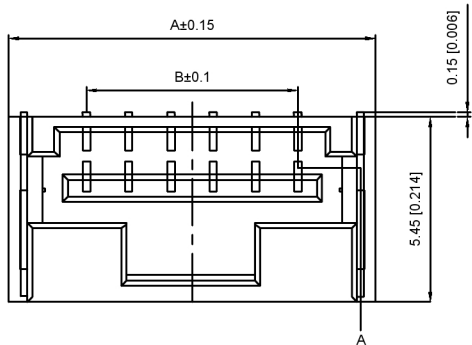
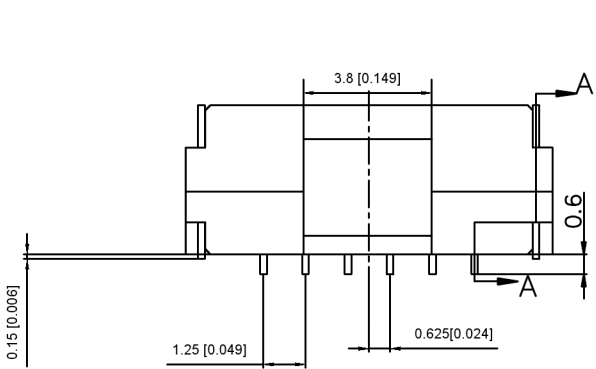
效 日期

MARK 文件工程章 DESCRIPTION

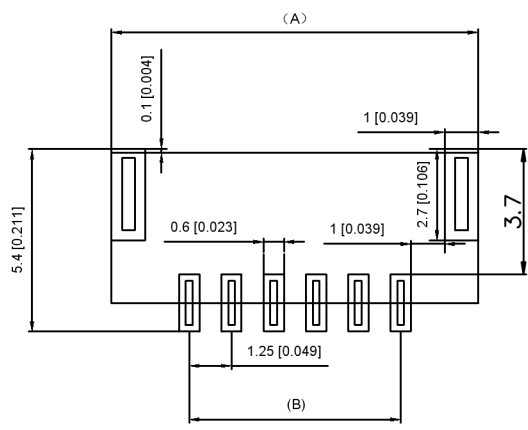
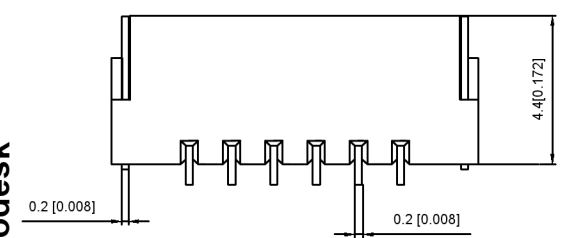
| REVISIONS | DATE | REVISED | APPROVED | UNSPECIFIED TOLERANCES |
|-----------|------|---------|----------|------------------------|
|           |      |         |          |                        |

units: mm  
 tolerance:  
 X.X ±0.2mm  
 X.XX ±0.1mm  
 X.XXX ±0.05mm

|                                      |       |             |  |
|--------------------------------------|-------|-------------|--|
| DSND                                 | DATE  | SCALE: N/A  | MODEL TYPE:<br>Wire to board connector |
| DWN                                  | DATE  | VIEW:       | PART NO.:                              |
| CHKD                                 | DATE  | UNIT: mm/in | 2.54mm Crimp Style Connectors          |
| APPD                                 | DATE  | SIZE: A4    | DWG NO.:                               |
| XKB INDUSTRIAL PRECISION CO.,LIMITED |       |             | X1254WVS-XX-LPSW                       |
| WEIGHT                               | SHEET | REVISION    |  |
|                                      | 1/1   | A0          |  |



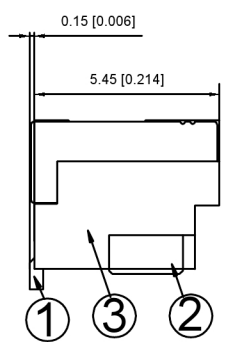
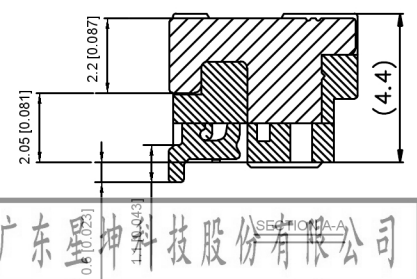
Specifications:  
 规格:  
 Voltage rating:50V AC/DC  
 额定电压: 50V AC/DC  
 Current rating:1A AC/DC  
 额定电流: 1A AC/DC  
 Contact Resistance:≤20MΩ  
 接触电阻: ≤20MΩ  
 Insulation Resistance:≥100MΩ  
 绝缘电阻:≥100MΩ  
 Dielectric strength:250V AC/minute  
 耐压: 250V AC/minute  
 Plug-in force: ≤3N(per pin)  
 插入力: ≤3N (per pin)  
 Plug-out force:≥0.3N (per pin)



PCB LAYOUT

X1254W R S -XX-LP SW  
 ① ② ③ ④ ⑤ ⑥ ⑦

- ⊙ Series No
- ⊙ Category:W-WAFER
- ⊙ Welding Board Angle:R-90°
- ⊙ Welding Way:S-SMT
- ⊙ Row No-Pin No:XX-02-07PIN
- ⊙ Material:LP-LCP 94V-0
- ⊙ Plating Category:SW-Matte Tin Plating(Tin:70u Min)



| Circuits | Dinansin mm |      | Circuits | Dinansin mm |      |
|----------|-------------|------|----------|-------------|------|
|          | A           | B    |          | A           | B    |
| 2        | 5.58        | 5.6  | 6        | 10.85       | 6.25 |
| 3        | 7.10        | 6.85 | 7        | 12.10       | 7.5  |
| 4        | 8.35        | 8.10 |          |             |      |
| 5        | 9.6         | 9.35 |          |             |      |

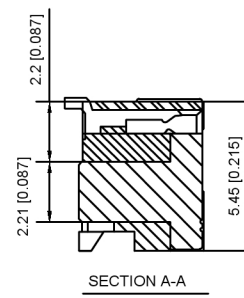
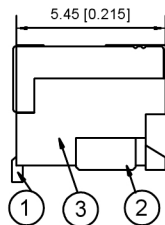
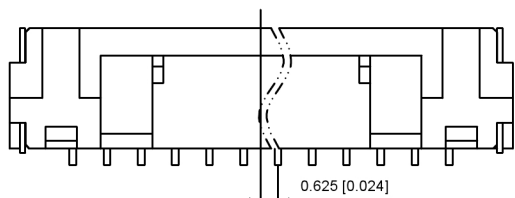
|                  |              |               |             |                       |
|------------------|--------------|---------------|-------------|-----------------------|
| X1254WRS-XX-LPSW | LCP UL 94V-0 | Brass         | Tin -Pated  | X1254W                |
| PART NO          | Material     | Material(pin) | Finish(Pin) | Suitable XKB Terminal |

广东墨神科技股份有限公司  
 生 效 日期  
 文件工程章  
 DESCRIPTION

| REVISIONS | DATE | REVISED | APPROVED | UNSPECIFIED TOLERANCES |
|-----------|------|---------|----------|------------------------|
|           |      |         |          |                        |

units: mm  
 tolerance:  
 X.X ±0.2mm  
 X.XX ±0.1mm  
 X.XXX ±0.05mm

|                                      |  |      |  |             |  |
|--------------------------------------|--|------|--|-------------|--|
| DSND                                 |  | DATE |  | SCALE: N/A  | MODEL TYPE:<br>Wire to board connector     |
| DWN                                  |  | DATE |  | VIEW:       | PART NO.:<br>1.25mm Crimp Style Connectors |
| CHKD                                 |  | DATE |  | UNIT: mm/in | DWG NO.:<br>X1254WRS-XX-LPSW               |
| APPD                                 |  | DATE |  | SIZE: A4    |  |
| XKB INDUSTRIAL PRECISION CO.,LIMITED |  |      |  | WEIGHT      | SHEET<br>1/1                               |
|                                      |  |      |  | REVISION    | A0   |

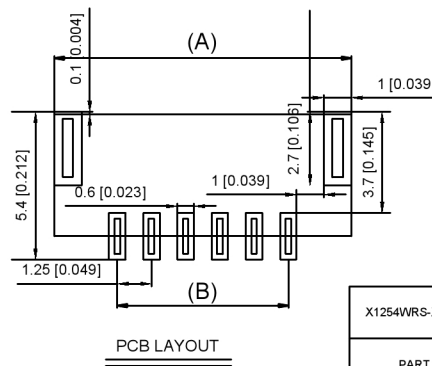
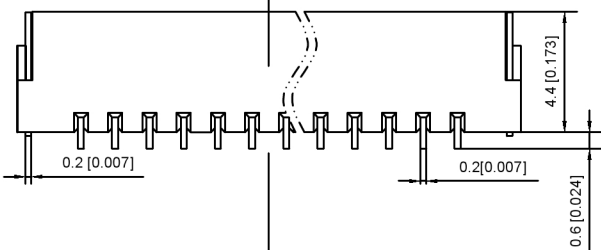
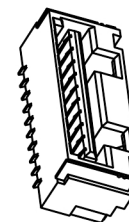
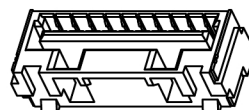
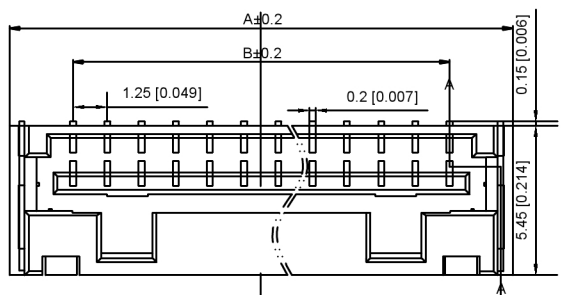


Specifications:

规格:  
 Voltage rating:50V AC/DC  
 额定电压: 50V AC/DC  
 Current rating:1A AC/DC  
 额定电流: 1A AC/DC  
 Contact Resistance:≤20MΩ  
 接触电阻: ≤20MΩ  
 Insulation Resistance:≥100MΩ  
 绝缘电阻:≥100MΩ  
 Dielectric strength:250V AC/minute  
 耐压: 250V AC/minute  
 Plug-in force: ≤3N(per pin)  
 插入力: ≤3N (per pin)  
 Plug-out force:≥0.3N (per pin)  
 拔出力: ≥0.3N (per pin)  
 Finish: TIN Bronze, Tin plated  
 Brass, Tin plated

X1254W R S -XX-LP SW

- ① Series No
- ② Category:W-WAFER
- ③ Welding Board Angle:R-90°
- ④ Welding Way: S-SMT
- ⑤ Row No-Pin No:XX-02-07PIN
- ⑥ Material:LP-LCP 94V-0
- ⑦ Plating Category:SW-Matte Tin Plating(Tin:70u Min)



| Circuits | Dinansin mm |       | Circuits | Dinansin mm |       |
|----------|-------------|-------|----------|-------------|-------|
|          | A           | B     |          | A           | B     |
| 8        | 13.35       | 8.75  | 12       | 18.35       | 13.75 |
| 9        | 14.60       | 10.00 | 13       | 19.60       | 15.00 |
| 10       | 15.85       | 11.25 | 14       | 20.85       | 16.25 |
| 11       | 17.10       | 12.50 | 15       | 22.10       | 17.50 |

|                  |              |               |             |                       |
|------------------|--------------|---------------|-------------|-----------------------|
| X1254WRS-XX-LPSW | LCP UL 94V-0 | Tin-Plated    | Tin-Plated  | X1254H                |
| PART NO          | Material     | Material(pin) | Finish(Pin) | Suitable XKB Terminal |

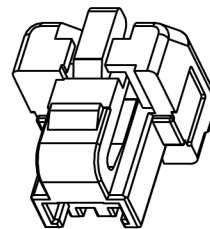
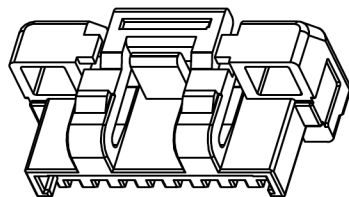
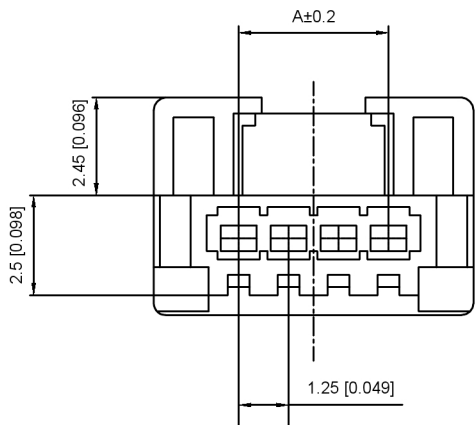
广东星坤科技股份有限公司

生效 MARK 日期

文件工程章

| DESCRIPTION | DATE | REVISED | APPROVED | UNSPECIFIED TOLERANCES |
|-------------|------|---------|----------|------------------------|
|             |      |         |          |                        |
|             |      |         |          |                        |
|             |      |         |          |                        |
|             |      |         |          |                        |

|                                       |  |      |  |             |  |       |          |
|---------------------------------------|--|------|--|-------------|--|-------|----------|
| DSND                                  |  | DATE |  | SCALE: N/A  | MODEL TYPE:<br>Wire to board connector     |       |          |
| DWN                                   |  | DATE |  | VIEW:       | PART NO.:<br>1.25mm Crimp Style Connectors |       |          |
| CHKD                                  |  | DATE |  | UNIT: mm/in | DWG NO.:<br>X1254WRS-XX-LPSW               |       |          |
| APPD                                  |  | DATE |  | SIZE: A4    |  |       |          |
| XKB INDUSTRIAL PRECISION CO., LIMITED |  |      |  |             | WEIGHT                                     | SHEET | REVISION |
|                                       |  |      |  |             |  | 1/1   | A0       |



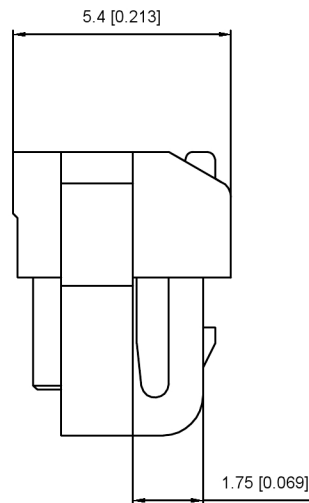
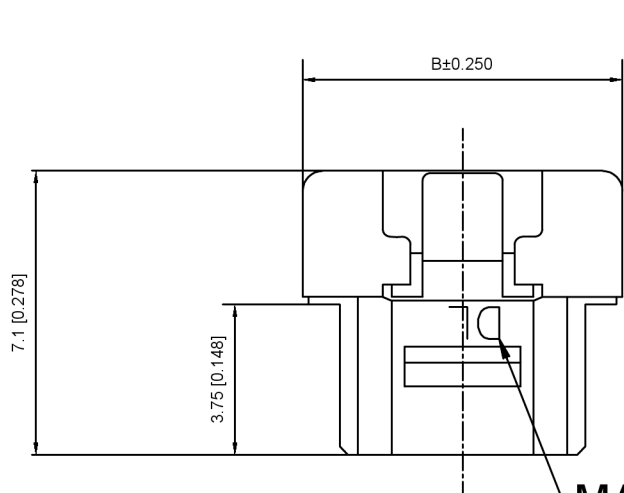
Specifications:

规格:  
 Voltage rating:50V AC/DC  
 额定电压: 50V AC/DC  
 Current rating:1A AC/DC  
 额定电流: 1A AC/DC  
 Contact Resistance:≤20MΩ  
 接触电阻: ≤20MΩ  
 Insulation Resistance:≥100MΩ  
 绝缘电阻:≥100MΩ  
 Dielectric strength:250V AC/minute  
 耐压: 250V AC/minute  
 Plug-in force: ≤3N(per pin)  
 插入力: ≤3N (per pin)  
 Plug-out force:≥0.3N (per pin)

X1254 H-XX-N0  
 ① ② ③ ④

- ① Series No
- ② Category:H-HSG
- ③ Row No:-Pin XX-02P-15P
- ④ Material:N0-PA66 94V-0

| Circuit s | Dinansin mm |       | Circuit s | Dinansin mm |       |
|-----------|-------------|-------|-----------|-------------|-------|
|           | A           | B     |           | A           | B     |
| 2         | 1.25        | 5.6   | 10        | 11.25       | 15.60 |
| 3         | 2.50        | 6.85  | 11        | 12.50       | 16.85 |
| 4         | 3.75        | 8.10  | 12        | 13.75       | 18.10 |
| 5         | 5.00        | 9.35  | 13        | 15.00       | 19.35 |
| 6         | 6.25        | 10.60 | 14        | 16.25       | 20.60 |
| 7         | 7.50        | 11.85 | 15        | 17.50       | 21.85 |
| 8         | 8.75        | 13.10 | —         | —           | —     |
| 9         | 10.00       | 14.35 | —         | —           | —     |



MARK

|              |               |               |             |                       |
|--------------|---------------|---------------|-------------|-----------------------|
| X1254H-XX-N0 | PA66 UL 94V-0 | X1254W        | Tin-Plated  | X1254H                |
| PART NO      | Material      | Material(pin) | Finish(Pin) | Suitable XKB Terminal |

广东星坤科技股份有限公司

生数 日期

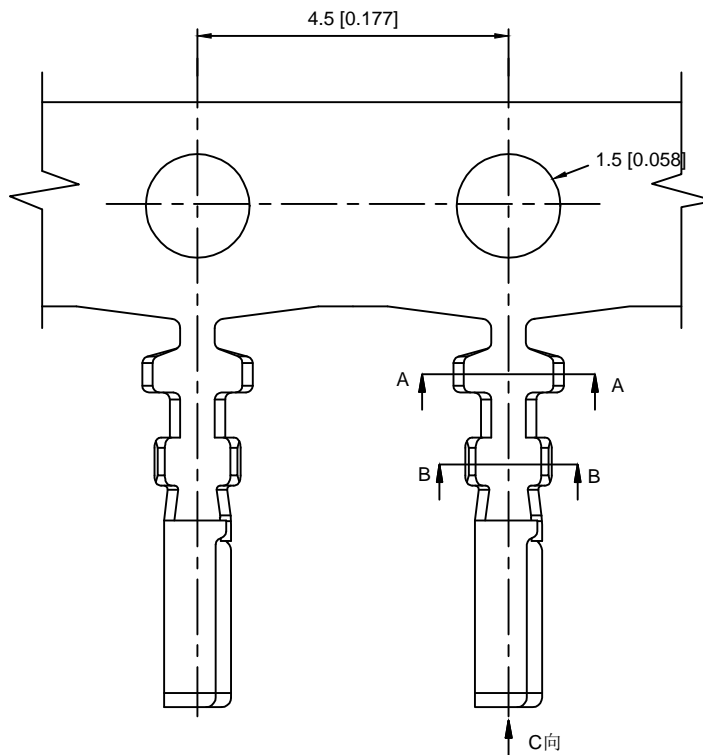
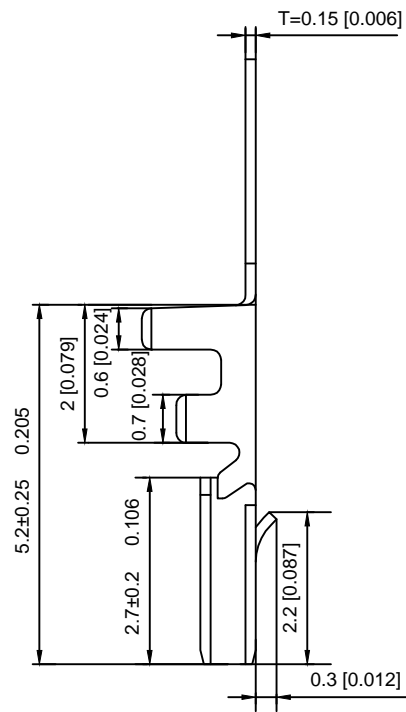
文件工程章

REVISIONS

UNSPECIFIED TOLERANCES

www.xk-dg.cn www.helloxkb.com www.helloxkb.cn

|                                       |  |      |  |             |  |
|---------------------------------------|--|------|--|-------------|--|
| DSND                                  |  | DATE |  | SCALE: N/A  | MODEL TYPE:<br>Wire to board connector |
| DWN                                   |  | DATE |  | VIEW:       | PART NO.:                              |
| CHKD                                  |  | DATE |  | UNIT: mm/in | 1.25mm Crimp Style Connectors          |
| APPD                                  |  | DATE |  | SIZE: A4    | DWG NO.:                               |
| XKB INDUSTRIAL PRECISION CO., LIMITED |  |      |  |             | WEIGHT                                 |
|                                       |  |      |  |             | SHEET                                  |
|                                       |  |      |  |             | REVISION                               |
|                                       |  |      |  |             | 1/1                                    |
|                                       |  |      |  |             | A0                                     |



Specifications:

规格:

Voltage rating:50V AC/DC

额定电压: 50V AC/DC

Current rating:1A AC/DC

额定电流: 1A AC/DC

Contact Resistance:≤20M

接触电阻: ≤20M

Ins lation Resistance: 100M

绝缘电阻: 100M

Dielectric strength:250V AC/minutenai

耐压: 250V AC/minute

Cycles:12000

寿命;12000

X1254T - P XX

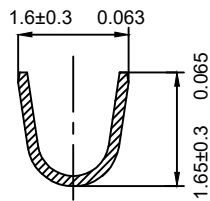
① ② ③

① Series No.

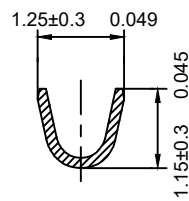
② Material.: P-Phosphor bronze;

③ Plating Style:

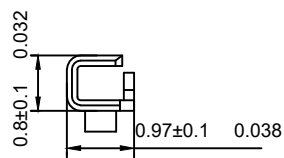
V01-All Gold Flash SN-Bright Tin Plating



SECTION A-A



SECTION B-B



SECTION C-C

|            |                |            |                |   |                       |
|------------|----------------|------------|----------------|---|-----------------------|
| X1254-PV01 | Phoshor Bronze | AWG#28-32  | 1.0mm(MAX)     | Stamping Pating 30u"Ni Whole Gold Flash   | X1254H                |
| X1254-PSN  | Material       | Wire Range | Insulation O.D | Stamping Before Pating:30u" Ni 70U"Sn Min |                       |
| PART NO    |                |            |                | Finish                                    | Suitable XKB Terminal |

|   |             |      |         |          |                        |
|---|-------------|------|---------|----------|------------------------|
| MARK  | DESCRIPTION | DATE | REVISED | APPROVED | UNSPECIFIED TOLERANCES |
| ΔX  |             |      |         |          | ANGLAR ±5°             |
| ΔX  |             |      |         |          | L ≤ 4 ±0.2             |
| ΔX  |             |      |         |          | 4 < L ≤ 16 ±0.3        |
|   |             |      |         |          | 16 < L ≤ 63 ±0.4       |
|   |             |      |         |          | L > 63 ±0.5            |
| REVISIONS                                     |             |      |         |          |                        |
| www.helloxkb.com www.helloxkb.cn www.xk-dg.cn |             |      |         |          |                        |

|                                       |             |                          |
|---------------------------------------|-------------|--------------------------|
| DSND                                  | SCALE: N/A  | MODEL TYPE: SLIDE SWITCH |
| DWN                                   | VIEW:       | PART NO.:                |
| CHKD                                  | UNIT: mm/in | DWG NO.:                 |
| APPD                                  | SIZE: A4    | X10C225XXX               |
| XKB INDUSTRIAL PRECISION CO., LIMITED |             | WEIGHT                   |
|                                       |             | SHEET                    |
|                                       |             | REVISION                 |
|                                       |             | 1/1                      |
|                                       |             | A0                       |