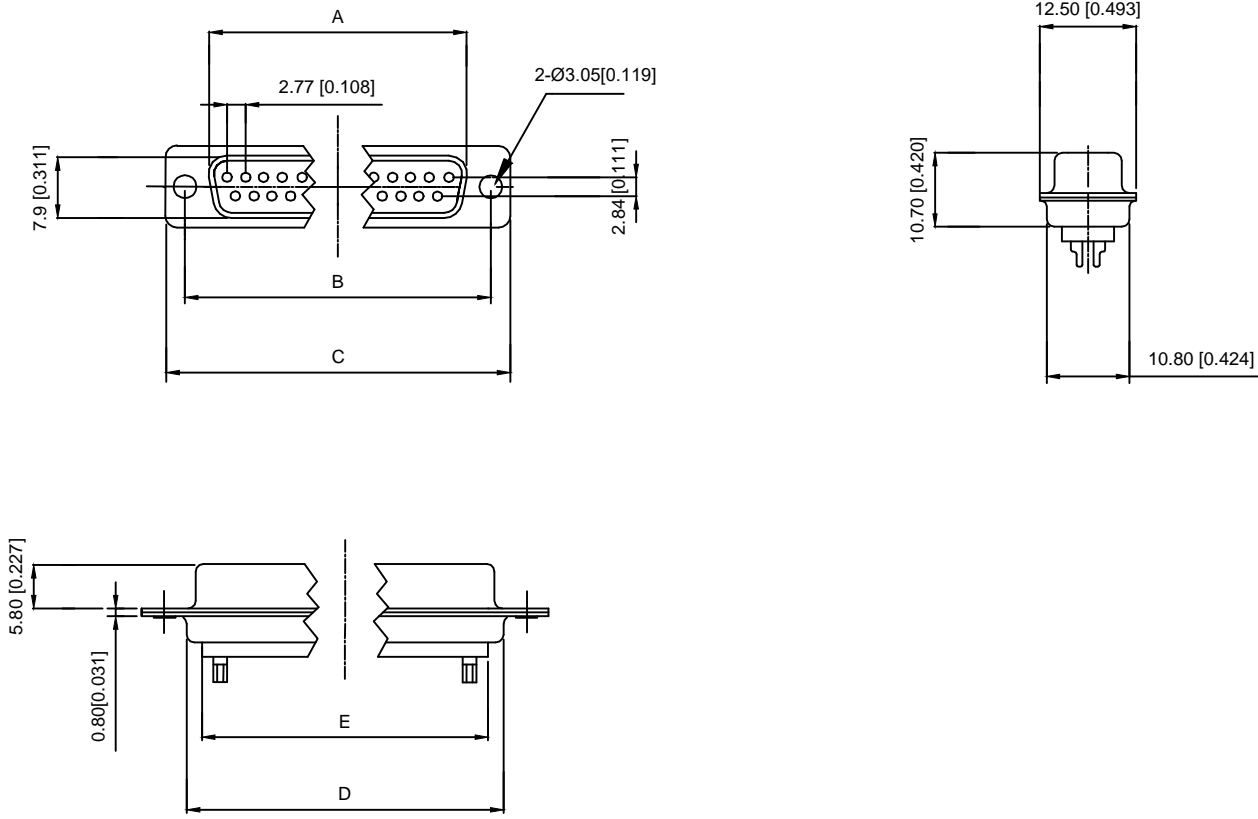


Specifications:

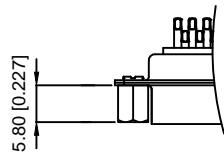
规格:  
 Current rating:3A AC/DC  
 额定电流: 3A AC/DC  
 Withstanding voltage:1000  
 AC/minute  
 耐受电压: ≥1000V AC/分钟  
 Temperature range:-25℃~+105℃  
 温度范围: -55℃~+105℃  
 Insulation resistance:500MΩMIN  
 绝缘电阻: ≥500MΩ  
 Contact resistance:25mΩMAN  
 接触电阻: ≤25mΩ  
 Material:  
 材料:  
 Contacts:Brass  
 接触: 黄铜  
 Insulator:PBT+30%  
 绝缘体: PBT+30%  
 Shell(Fead): SPCC  
 外壳: 铁  
 MECHANIAL CHATACTERICS:  
 插拔力:  
 Contact Insertion force:300gf MAX  
 插入力:最大300gf  
 Contact Separation Force:25gf MIN  
 拔出力: 最小25gf



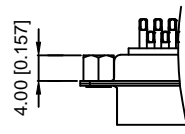
X01 XX F X X X X  
 ① ② ③ ④ ⑤ ⑥ ⑦

- ① Series NO.
- ② Row No.Pin No.XX-09;15;25;37
- ③ Welding Board Angle :F-Fmale
- ④ T: Tradutional C: Car-pin
- ⑤ Planting Cateogry: 1:1U 2:2U 3:3U 4:5U 5:15U 6:30U 7: Au Sn
- ⑥ B:BLACK W:White BL:Blue Y:Yellow G:Green R:Red
- ⑦ 1:TYPE-1; 2:TYPE-2; 3:TYPE-3; 4:TYPE-4; 5:TYPE-5

TYPE-2加前铆 (不通孔)



TYPE-3加后铆 (通孔)



NO.POS	A±0.38	B±0.13	C±0.20	D±0.38
9PIN	16.33	24.99	30.80	19.28
15PIN	24.66	33.32	39.20	27.65
25PIN	38.35	47.04	53.10	41.20
37PIN	54.80	63.50	69.40	57.44

DSND		DATE		SCALE: N/A	MODEL TYPE:
DWN		DATE		VIEW:	PART NO.:
CHKD		DATE		UNIT: mm/in	DWG NO.:
APPD		DATE		SIZE: A4	X01XXFXXXX
				WEIGHT	*SHEET
XKB INDUSTRIAL PRECISION CO.,LIMITED				1.0g	1/1
					REVISION
					A0

					units: mm
					tolerance:
					X.X ±0.2mm
					X.XX ±0.1mm
					X.XXX ±0.05mm
MARK	DESCRIPTION	DATE	REVISED	APPROVED	UNSPECIFIED TOLERANCES
REVISIONS					
www.xk-dg.cn www.helloxkb.com www.helloxkb.cn					