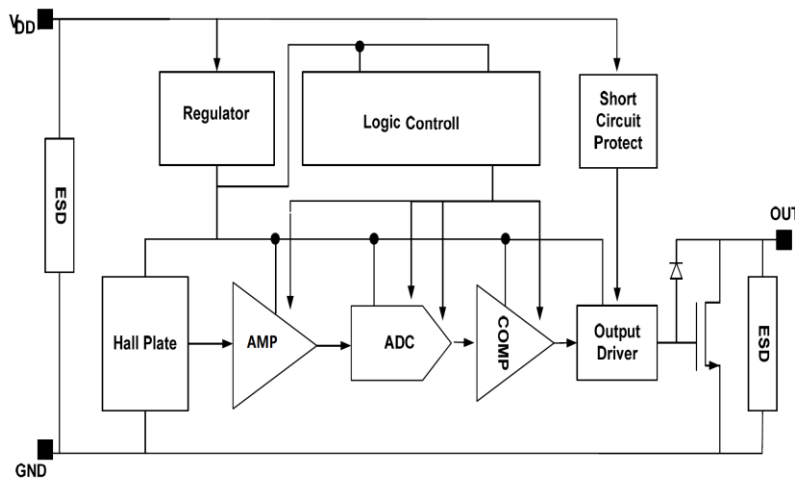
	<b>Cosemitech</b>	<b>CH502</b>
	<b>Automotive Product Group</b>	<small>This is advanced information on a new product now in development or undergoing evaluation. Details are subject to change without notice and Cosemi-tech assumes no obligation for future manufacture of this product. Contact Cosemi-tech for the latest status</small>

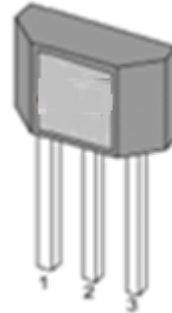
Revised Dec 2021

### FEATURES and FUNCTIONAL DIAGRAM

- Geartooth Sensor
- Zero Speed Detection
- Insensitive to Orientation
- High speed operation Frequency
- Short Circuit Protection
- Self-Adjusting Magnetic Range
- On-chip 10 bit A/D Converter
- No Chopper Delay
- RoHs Compliant 2011/65/EU



### PACKAGE



TO-92S

### APPLICATIONS


- Geartooth Sensor
  - Speed Sensor
  - Camshaft Sensor
  - Direction Detection\*
- \*See applications example

### DESCRIPTION

The CH502 is gear tooth sensor IC for use in automotive camshaft sensing. CH502 is used with a bias magnet south facing the back (no mark) side of the IC. The technology used for the IC is Hall-effect based. The Chip incorporate Hall Effect plate, an A/D converter with self-calibrates the internal gain of the device to adjust the air-gap variations. And digital sample and hold circuit. , Schmitt trigger and an open drain output with short circuit protected.

As the gear tooth rotate, the chip samples an in increasing or decreasing flux density. When the flux has reached its minimum value and increased hysteresis flux, the output will turn on (BOP).When the flux has reached its maximum value and decreased hysteresis flux, the output will turn off(BRP).


The CH502 is ideal for use in gather speed, position and direction detection to those gear-tooth based configurations. Particularly suited to those applications that require accurate duty cycle or accurate edge detection, such as automotive camshaft sensing.

	<b>Cosemitech</b>	<b>CH502</b>
	<b>Automotive Product Group</b>	<small>This is advanced information on a new product now in development or undergoing evaluation. Details are subject to change without notice and Cosemi-tech assumes no obligation for future manufacture of this product. Contact Cosemi-tech for the latest status</small>

**Revised Dec 2021**

## Revision History


Date	Revision	Change
Sep 2021	1.0	Add the comment for operation voltage.
Oct 2021	1.1	Add the CST-000 and CST-001 level.
Dec 2021	1.2	Add device mark "C502".

	<b>Cosemitech</b>	<b>CH502</b>
	<b>Automotive Product Group</b>	<small>This is advanced information on a new product now in development or undergoing evaluation. Details are subject to change without notice and Cosemi-tech assumes no obligation for future manufacture of this product. Contact Cosemi-tech for the latest status</small>

**Revised Dec 2021**

## Table of Contents

<b>1</b>	<b>GLOSSARY OF TERMS .....</b>	<b>4</b>
<b>2</b>	<b>PRODUCT FAMILY MEMBERS .....</b>	<b>4</b>
<b>3</b>	<b>PIN DEFINITIONS AND DESCRIPTIONS .....</b>	<b>4</b>
<b>4</b>	<b>ABSOLUTE MAXIMUM RATINGS .....</b>	<b>4</b>
<b>5</b>	<b>ESD PROTECTIONS .....</b>	<b>5</b>
<b>6</b>	<b>FUNCTION DESCRIPTION.....</b>	<b>5</b>
<b>7</b>	<b>PARAMETERS SPECIFICATION .....</b>	<b>5</b>
<b>8</b>	<b>APPLICATION INFORMATION .....</b>	<b>6</b>
<b>9</b>	<b>PACKAGE INFORMATION: .....</b>	<b>9</b>

	<b>Cosemitech</b>	<b>CH502</b>
	<b>Automotive Product Group</b>	<small>This is advanced information on a new product now in development or undergoing evaluation. Details are subject to change without notice and Cosemi-tech assumes no obligation for future manufacture of this product. Contact Cosemi-tech for the latest status</small>

**Revised Dec 2021**

## 1 Glossary of Terms

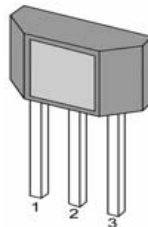
MilliTesla (mT),	Gauss Units of magnetic flux density: 1mT = 10 Gauss
RoHS	Restriction of Hazardous Substances
ESD	Electro-Static Discharge

## 2 Product Family Members

Part Number	Mark	Option Code	Description
CH502TB	C502	000	CST-000 level; Flat TO-92S package, bulk packing (1000pcs/bag)
CH502TB	C502	001	CST-001 level; Flat TO-92S package, bulk packing (1000pcs/bag)

## 3 Pin Definitions and Descriptions

TO-92S	Name	Type	Function
1	VDD	Supply	Supply Voltage pin
3	OUT	Output	Output pin
2	GND	Ground	Ground pin




**TO-92S**

## 4 Absolute Maximum Ratings

Parameter	Symbol	Min	Max	Units
Supply Voltage	VDD	-	30	V
Supply Current (fault)	IDD	-	50	mA
Output Voltage	VOUT	-	30	V
Output Current (Fault)	IOUT	-	30	mA
Output Current (Fault)	Ifault		50	mA
Power Dissipation	P <sub>D</sub>		100	mW
Operating Ambient Temperature	T <sub>A</sub>	-40	150	°C
Storage Temperature	T <sub>S</sub>	-65	150	°C
Junction temperature	T <sub>J</sub>		175	°C

Note: Exceeding the absolute maximum ratings may cause permanent damage. Exposure to absolute-maximum-rated conditions for extended periods may affect device reliability.

	<b>Cosemitech</b>	<b>CH502</b>
	<b>Automotive Product Group</b>	<small>This is advanced information on a new product now in development or undergoing evaluation. Details are subject to change without notice and Cosemi-tech assumes no obligation for future manufacture of this product. Contact Cosemi-tech for the latest status</small>

**Revised Dec 2021**

## 5 ESD protections

Parameter	Value	Unit
All pins <sup>1)</sup>	+/-8000	V
All pins <sup>2)</sup>	+/-200	V

1) HBM (human body model, 100pF, 1.5 kohm ) according to MIL-883C, Method 3015.7 or EIA/JESD22A-114A

2) Machine Model: C=200pF; R=0Ω

## 6 Function Description

The CH502 is a sophisticated IC featuring an on-chip 10-bit A/D Converter and logic that acts as a digital sample and hold circuit. A separate 4-bit A/D converter provides a fixed hysteresis. The CH502 does not have a chopper delay. The CH502 uses a single Hall plate which is immune to rotary alignment problems. The bias magnet can be from 50 to 400mT.

As the signal is sampled, the logic recognizes an increasing or decreasing flux density. The output will turn on (BOP) after the flux has reached its peak and decreased by an amount equal to the hysteresis. Similarly the output will turn off (BRP) after the flux has reached its minimum value and increased by an amount equal to the hysteresis.

## 7 Parameters Specification

The voltages are referred to GND.


3V < VDD < 24V; TA =-40 to 150°C, unless otherwise specified.

Symbol	Parameter	Test Condition	Min	Typ.	Max	Units
V <sub>DD</sub>	Supply voltage <sup>(1)</sup>	Operating	3	5	24	V
I <sub>DD1</sub>	Supply Current	VDD = 12V	1.5	3.0	4.5	mA
I <sub>DD2</sub>	Supply Current	VDD = 3V to 24V	1		6	mA
V <sub>SAT</sub>	Output saturation voltage	VDD=12V, IOU=25mA			0.6	V
I <sub>LEAK</sub>	Output Leakage Current	VOU = 3V to 24V			10	uA
T <sub>R</sub>	Output rise time	VDD=12V R1 = 880 Ω C1 = 20pf			0.4	us
T <sub>F</sub>	Output fall time	VDD=12V R1 = 880 Ω C1 = 20pf			0.4	us
I <sub>FAULT</sub>	Output Short Circuit Current	Fault	50	100	150	mA
T <sub>FAULT</sub>	Output Short Circuit Shutdown	Fault	10	-	20	uS
FCLK	Clock Frequency		300	500	800	kHz
BW	bandwidth				15	kHz
B <sub>BIAS</sub>	Back Bias Range	Operating Temperature Range	-30	-	400	mT
B <sub>hys</sub>	Hysteresis	(CST-000 Level)	2.7	3.2	8	mT
		(CST-001 Level) <sup>(3)</sup>	2.7	3.2	5	mT

Note: (1) Due to design consideration, it is not recommended use the chip in the supply voltage range between 7.4V to 8.6V.

(2) 1mT=10Gauss

(3) Special order should be applied.

	<b>Cosemitech</b>	<b>CH502</b>
	<b>Automotive Product Group</b>	<small>This is advanced information on a new product now in development or undergoing evaluation. Details are subject to change without notice and Cosemi-tech assumes no obligation for future manufacture of this product. Contact Cosemi-tech for the latest status</small>

**Revised Dec 2021**

## 8 Application information

### 8.1 Application note

Maximum dynamic range is 500 mT. The hysteresis is fixed at 3.2 mT as typical data. Best angular accuracy will be obtained when the magnetic circuit provides peak magnetic flux at the chip near the high end of the linear range of 500 mT. EMC protection using external components are recommended. Two possibilities are shown on the following page. Normally the South pole faces the unbranded side of the device. A North pole will enable a test sequence used in factory testing.

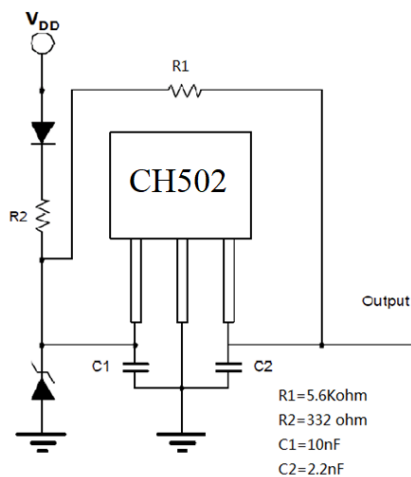
### 8.2 Unique Features

The output is reset to the high state at power on (output driver is off) whatever the field is. The output only changes after the first min is detected. The reset state holds no information about the field. If the supply of the chip is raised slowly, the reset state is not stable. This has been observed at 0 field but it should be the same with small and large fields.

Gear tooth sensors often need to be adjusted after the module is assembled to align the magnet with differential Hall plates or orient with teeth. However the CH502 is “self adjusting” over a wide range of back bias flux eliminating the need for any trimming in the application. The magnet may be glued to the back surface (non branded side) of the IC using a cyanoacrylate adhesive or suitable epoxy.

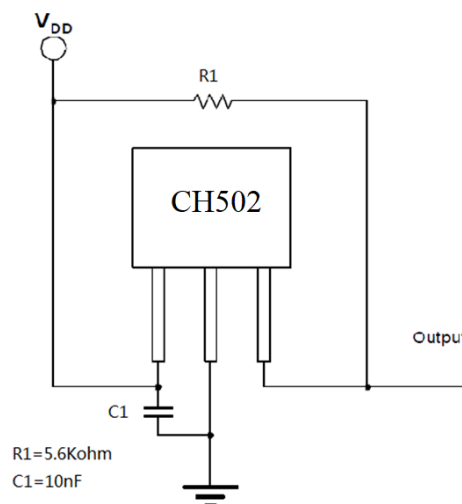
### 8.3 Application Circuit

**Severe Environment and Automotive Protection Circuit**



In severe cases it may be necessary to include a Zener diode to clamp positive interference and Schottky diodes to clamp negative excursions.

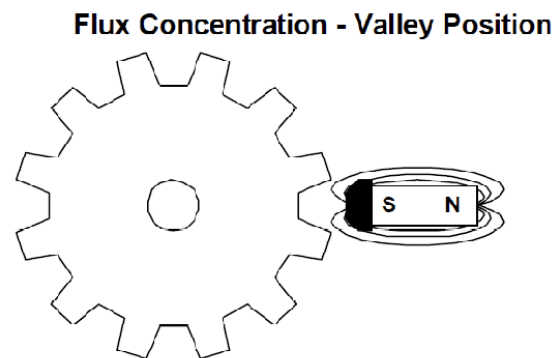
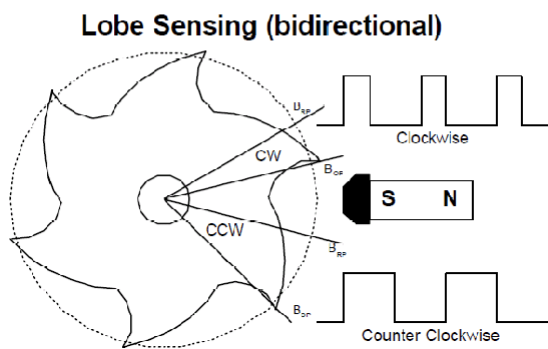
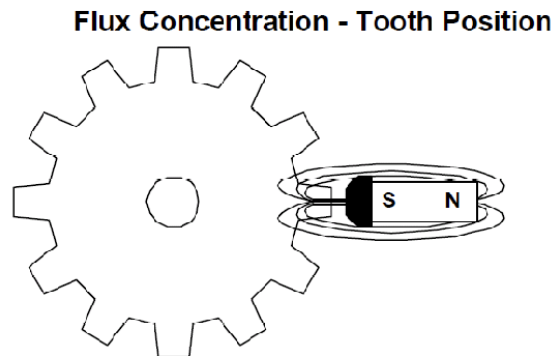
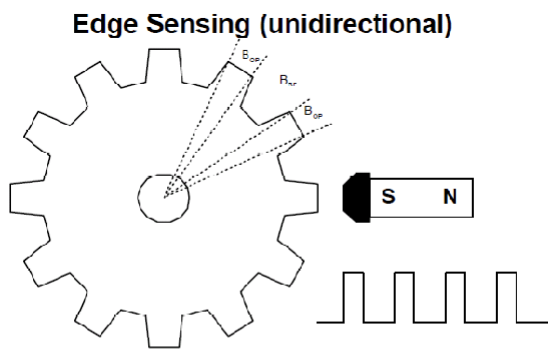
**Recommended Wiring and Minimum Protection Circuit**



	<b>Cosemitech</b>	<b>CH502</b>
	<b>Automotive Product Group</b>	<small>This is advanced information on a new product now in development or undergoing evaluation. Details are subject to change without notice and Cosemi-tech assumes no obligation for future manufacture of this product. Contact Cosemi-tech for the latest status</small>

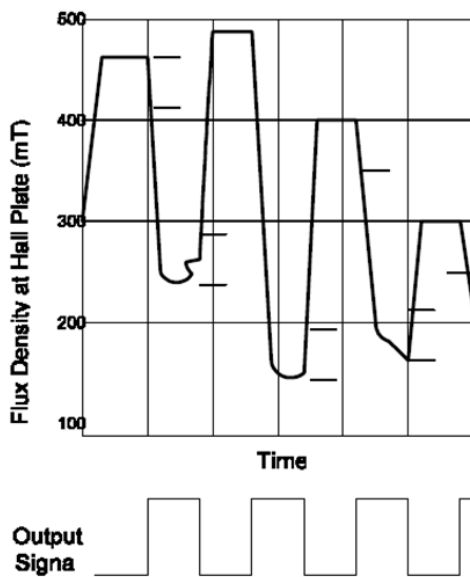
Revised Dec 2021

### 8.4 Application Examples

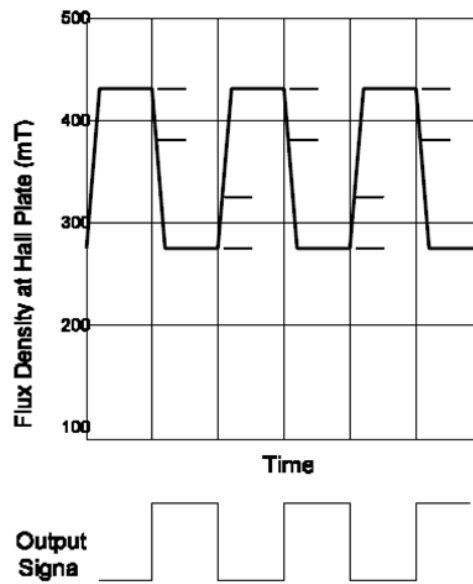


### 8.3 Performance Graphs

**Switch Points versus Irregular Magnetic Signal (Worn Gear)**



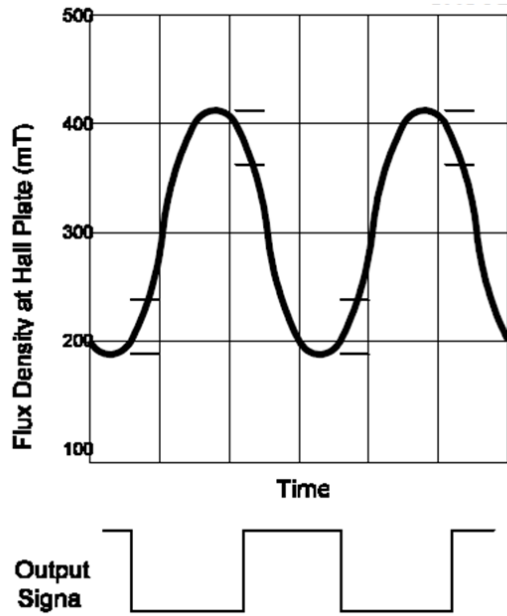
**Switch Points versus Regular Magnetic Signal (New Gear)**




	<b>Cosemitech</b>	<b>CH502</b>
	<b>Automotive Product Group</b>	<small>This is advanced information on a new product now in development or undergoing evaluation. Details are subject to change without notice and Cosemi-tech assumes no obligation for future manufacture of this product. Contact Cosemi-tech for the latest status</small>

**Revised Dec 2021**

**Switch Points  
versus  
Analog Magnetic Signa  
(Cam Lobe)**





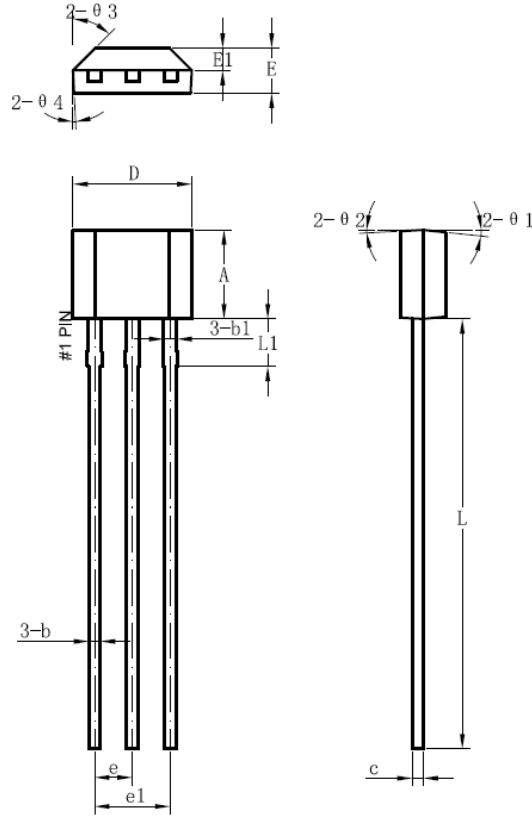
	<b>Cosemitech</b>	<b>CH502</b>
	<b>Automotive Product Group</b>	<small>This is advanced information on a new product now in development or undergoing evaluation. Details are subject to change without notice and Cosemi-tech assumes no obligation for future manufacture of this product. Contact Cosemi-tech for the latest status</small>

Revised Dec 2021


9 Package Information:

Symbol	Parameter	Test Condition	Min	Typ	Max	Units
RTH	Thermal Resistance				200	°C/W

**Package Designator  
TO-92S**



Symbol	Dimensions in Millimeters		
	Min.	Typ.	Max.
A	3.08	3.18	3.28
b	0.38	0.44	0.56
b1		0.44	
c	0.36	0.38	0.51
D	4.0	4.1	4.2
E	1.47	1.57	1.67
E1		0.76	
e		1.27	
e1		2.54	
L	13.5	14.5	15.5
L1		2.8	
$\theta 1$		6°	
$\theta 2$		3°	
$\theta 3$		45°	
$\theta 4$		3°	

	<b>Cosemitech</b>	<b>CH502</b>
	<b>Automotive Product Group</b>	<small>This is advanced information on a new product now in development or undergoing evaluation. Details are subject to change without notice and Cosemi-tech assumes no obligation for future manufacture of this product. Contact Cosemi-tech for the latest status</small>

**Revised Dec 2021**

Information furnished is believed to be accurate and reliable. However, Cosemitech assumes no responsibility for the consequences of use of such information nor for any infringement of patents or other rights of third parties which may result from its use. No license is granted by implication or otherwise under any patent or patent rights of Cosemi-tech. Specification mentioned in this publication are subject to change without notice. This publication supersedes and replaces all information previously supplied. Cosemitech products are not authorized for use as critical components in life support devices or systems without express written approval of Cosemitech.

The Cosemitech logo is a registered trademark of Cosemitech